

**TABLE OF CONTENTS**

INTRODUCTION .....1

UNIT AT A GLANCE .....2

FEATURES AT A GLANCE .....3

QUICK START GUIDE .....4

CHARGING YOUR DEVICE .....5

FUNCTIONS .....6

MULTI-LINK MODE .....7

SOUND PROFILES .....9

STRAP INSTALLATION .....10

SAFETY GUIDELINES .....11

FAQ & ADDITIONAL RESOURCES .....12

SUPPORT .....12

LIMITED WARRANTY .....12

SPECIFICATIONS .....13

**INTRODUCTION**

Welcome to your new Raycon Fitness Speaker!

We are Raycon. We create carefully crafted wireless audio products for go-getters who need tech that keeps up with them. We teamed up with expert engineers, leading taste-makers, and platinum artists to design products you'll love to use.

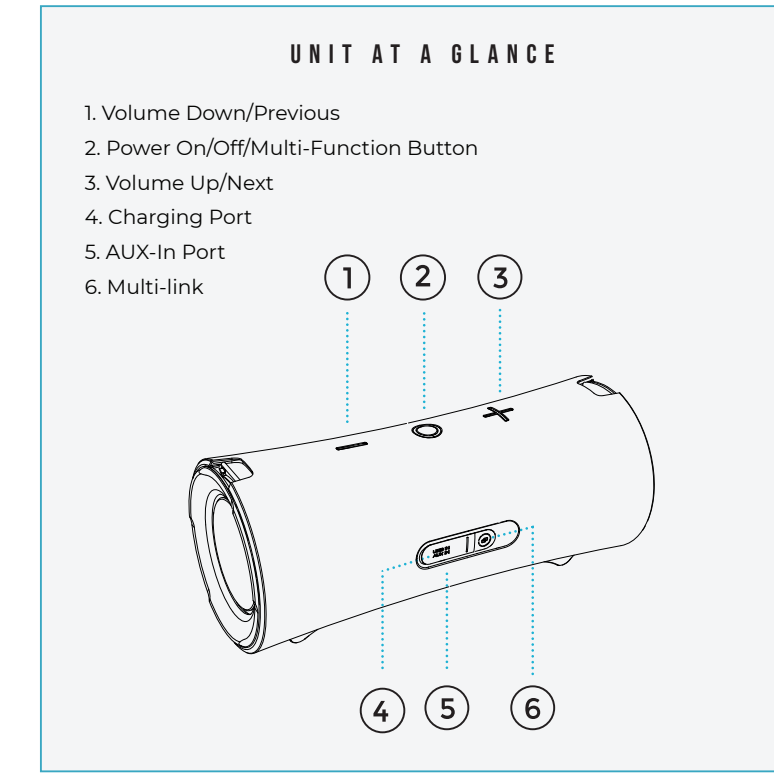
We believe in the the early risers and the one-more-milers of the world. Premium audio, inspired by you.

Before using your product, we strongly encourage you to fully read through this user guide. You can also visit our support center at [www.rayconglobal.com/support](http://www.rayconglobal.com/support). This web page has more specific guidelines and helpful videos for you to navigate your product. For best performance, charge fully before first use.

Pairing ID: **The Fitness Speaker**

**INTERNATIONAL MANUAL**

For international versions of the manual, please visit [www.rayconglobal.com/support](http://www.rayconglobal.com/support)



**FEATURES AT A GLANCE**

**DUAL DRIVERS**  
The Dual Drivers in the Fitness Speaker give you powerful sound to power you through your toughest workouts.

**IPX4 WATER RESISTANCE**  
Whether you're working out in the gym or outdoors, the Fitness Speaker will stand up to whatever you throw at it.

**ON THE GO STRAP**  
Bring the Fitness Speaker wherever your workout takes you with a convenient on the go strap.

**MULTI-LINK MODE**  
Fill the whole house with sound by linking your Fitness Speaker to others via Bluetooth.

**12 HOURS OF PLAYTIME**  
The Fitness Speaker boasts 12 hours of playtime so it's with you for the long haul.

**THREE SOUND PROFILES**  
Different workouts need different vibes, that's why you have three unique sound profiles to choose from.

**QUICK START GUIDE**

1. Hold "⊕" for about 3 seconds. Speaker will enter pairing mode automatically.

2. From the source device, go to Bluetooth settings and ensure Bluetooth is on. Search for "The Fitness Speaker" and select it to pair.

3. Enjoy your Raycon Fitness Speakers!

**CHARGING YOUR DEVICE**

1. Use a standard **5V/1-2A charger** or a **PC** to charge this device. Do **NOT** use a power bank.

2. Charge time should be 6 hours. While charging, the red LED will stay on.

3. After fully charging, the LED light will be off.

**FUNCTIONS**

**CONTROL PANEL TOP VIEW**

**MEDIA PLAYER CONTROL**

	<b>Previous</b>	Hold for 1.5 sec
	<b>Volume Down</b>	Press
	<b>Power On</b>	Hold for 3 sec
	<b>Power Off</b>	Hold for 5 sec
	<b>Play/Pause</b>	Press
	<b>Next</b>	Hold for 1.5 sec
	<b>Volume Up</b>	Press

**PHONE CALL CONTROL**

	<b>Answer/End Call</b>	Press
	<b>Reject Call</b>	Press 2 times

**MULTI-LINK MODE**

Pair two Fitness Speakers together with Multi-link Mode.

- Power on both speakers and ensure that both speakers are not connected to any bluetooth device.
- On one speaker, press "⊕" to begin pairing. A voice prompt will be audible once speakers are successfully paired.

3. From the source device, go to Bluetooth settings and ensure Bluetooth is on. Search for "The Fitness Speaker" and select it to pair.

4. Enjoy your Raycon Fitness Speakers with Multi-link Model Press "⊕" to unpair speakers.

**NOTE:**  
Please keep speakers within 10 ft of each other for best Multi-link Mode experience.

**SOUND PROFILES**

Your sound, your way. Our sound profiles are designed by artists and producers at the top of the industry. Press "⊕" 2 times to toggle between sound profiles.

**PURE SOUND**  
Our most refined sound, perfect clarity to hear every single note.

**BALANCED SOUND**  
A leveled sound that is great for all around performance and clarity.

**BASS SOUND**  
Our bass boosted sound, great for songs with strong beats and a go-to for bass lovers.

**STRAP INSTALLATION**

**SAFETY GUIDELINES**

- Be wary of any edges, uneven surfaces, and metal parts, including on accessories and product packaging, to prevent any possible injury or damage.
- Listen to music at a proper volume to avoid damaging your hearing and speaker.
- Do not store in high temperatures, such as in a hot vehicle or in direct sunlight.
- Store in cool and dry area.
- Do not drop or cause undue impact to the speaker.
- Do not modify, repair, or dismantle the product on your own.
- Do not expose speaker and any of its supplied parts to liquid such as rain for prolonged periods of time. Please see IPX-Rating for more guidelines.

**FAQ & ADDITIONAL RESOURCES**

Visit: [www.rayconglobal.com/support](http://www.rayconglobal.com/support)

**SUPPORT**

If your device is not functioning correctly, please visit [www.rayconglobal.com/support](http://www.rayconglobal.com/support) for customer support, and we will be more than happy to help you.

**LIMITED WARRANTY**

Visit: [www.rayconglobal.com/warranty](http://www.rayconglobal.com/warranty)

**SPECIFICATIONS**

Model Number: RB5940  
Bluetooth Name: The Fitness Speaker  
RID: D940-2IE-Q321  
Bluetooth Version: 5.0  
Power Input: DC 5V /1A  
Battery Capacity: 7200mAh  
Call / Play Time: About 12-14 hours  
Charging Time: About 5-6 hour  
Charging Current: 5V 1.8A  
Driver Unit: 20W x 2  
Dimension: 280 x 118 x 120mm  
Weight: 1730g ±10  
Bluetooth Range: Up to 10 Meters

**FCC WARNING**

This device complies with part 15 of the FCC Rules. Operation is subject to the following two conditions:  
(1) this device may not cause harmful interference, and  
(2) this device must accept any interference received, including interference that may cause undesired operation. Any changes or modifications not expressly approved by the party responsible for compliance could void the user's authority to operate the equipment.

**NOTE:** This equipment has been tested and found to comply with the limits for a Class B digital device, pursuant to Part 15 of the FCC Rules. These limits are designed to provide reasonable protection against harmful interference in a residential installation. This equipment generates, uses, and can radiate radio frequency energy and, if not installed and used in accordance with the instructions, may cause harmful interference to radio communications. However, there is no guarantee that interference will not occur in a particular installation. If this equipment does cause harmful interference to radio or television reception, which can be determined by turning the equipment off and on, the user is encouraged to try to correct the interference by one or more of the following measures:

- Reorient or relocate the receiving antenna.
- Increase the separation between the equipment and receiver.
- Connect the equipment into an outlet on a circuit different from that to which the receiver is connected.
- Consult the dealer or an experienced radio/TV technician for help. The device has been evaluated to meet general RF exposure statement. The device can be used in portable exposure condition without restriction.

**IC Caution:**  
Radio Standards Specification RSS-Cer, issue 5

- English:  
This device contains licence-exempt transmitter(s)/receiver(s) that comply with Innovation, Science and Economic Development Canada's licence-exempt RSS(s). Operation is subject to the following two conditions:  
This device may not cause interference.  
This device must accept any interference, including interference that may cause undesired operation of the device.

**RF exposure statement:**  
The equipment complies with IC Radiation exposure limit set forth for uncontrolled environment. This equipment should be installed and operated with minimum distance 20cm between the radiator and your body.

- French:  
Cet appareil contient des émetteurs / récepteurs exempts de licence conformes aux RSS (RSS) d'Innovation, Sciences et Développement économique Canada. Le fonctionnement est soumis aux deux conditions suivantes:  
Cet appareil ne doit pas causer d'interférences.  
Cet appareil doit accepter toutes les interférences, y compris celles susceptibles de provoquer un fonctionnement indésirable de l'appareil. Déclaration d'exposition RF:  
L'équipement est conforme à la limite d'exposition aux radiations de la IC établie pour un environnement non contrôlé. Cet équipement doit être installé et utilisé avec une distance minimale de 20 cm entre le radiateur et votre corps.

**FCC ID: 2AZOV-RB5940**  
**IC: 27185-RB5940**

