

TABLE OF CONTENTS

- INTRODUCTION1
- UNIT AT A GLANCE2
- FEATURES AT A GLANCE3
- CHARGING YOUR DEVICE4
- QUICK START GUIDE5
- FUNCTIONS6
- LED LIGHTS8
- AUX-OUT MODE8
- USB MODE9
- SOUND PROFILES10
- RESET FUNCTION11
- SAFETY GUIDELINES11
- FAQ & ADDITIONAL RESOURCES13
- SUPPORT13
- LIMITED WARRANTY13
- SPECIFICATIONS13

INTRODUCTION

Welcome to your new Raycon Work Speaker!

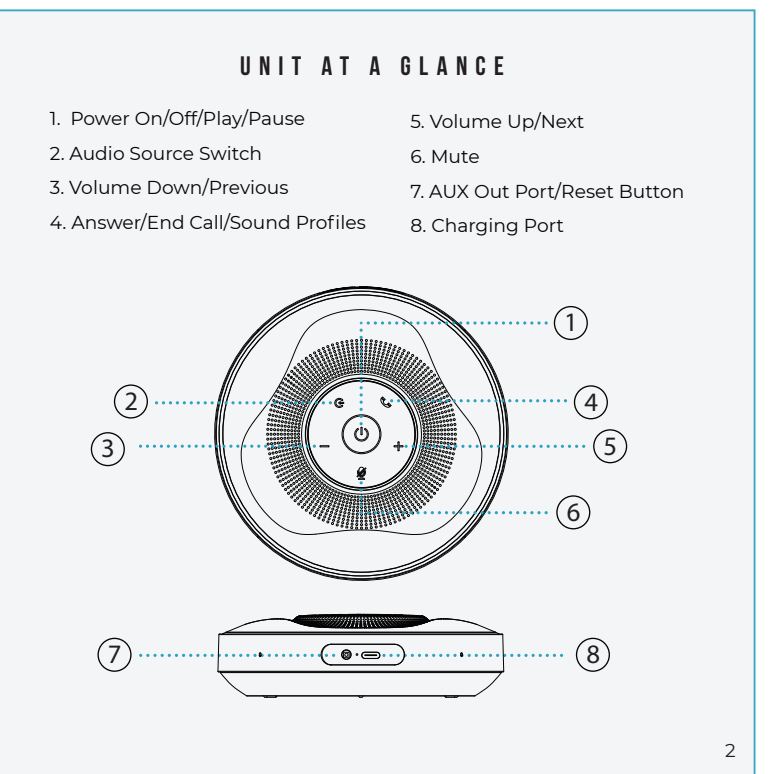
We are Raycon. We create carefully crafted wireless audio products for go-getters who need tech that keeps up with them. We teamed up with expert engineers, leading taste-makers, and platinum artists to design products you'll love to use.

We believe in the early risers and the one-more-milers of the world. Premium audio, inspired by you.

Before using your product, we strongly encourage you to fully read through this user guide. You can also visit our support center at www.rayconglobal.com/support. This web page has more specific guidelines and helpful videos for you to navigate your product. For best performance, charge fully before first use.

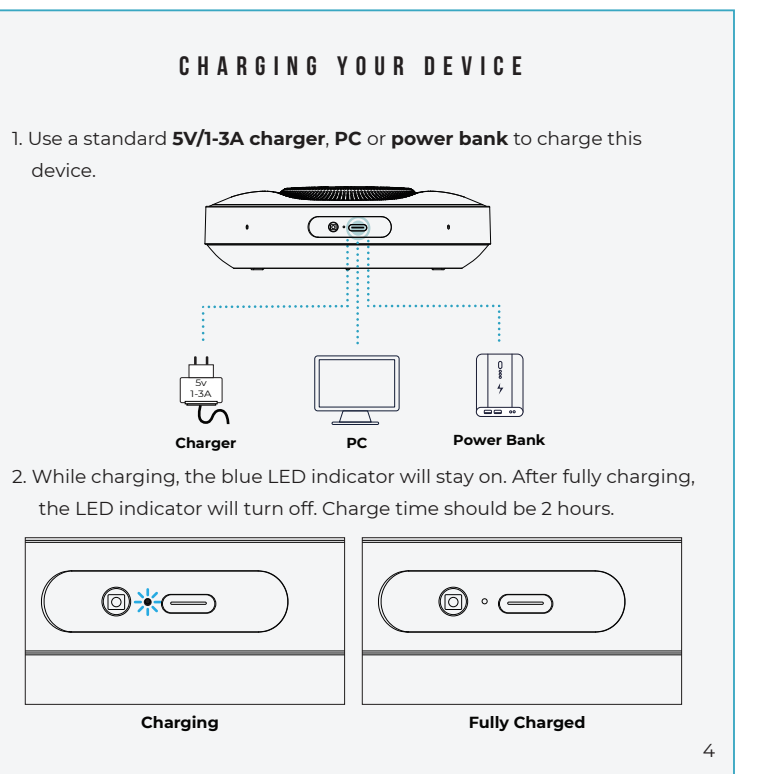
Pairing ID: **The Work Speaker**

INTERNATIONAL MANUAL
For international versions of the manual, please visit www.rayconglobal.com/support.



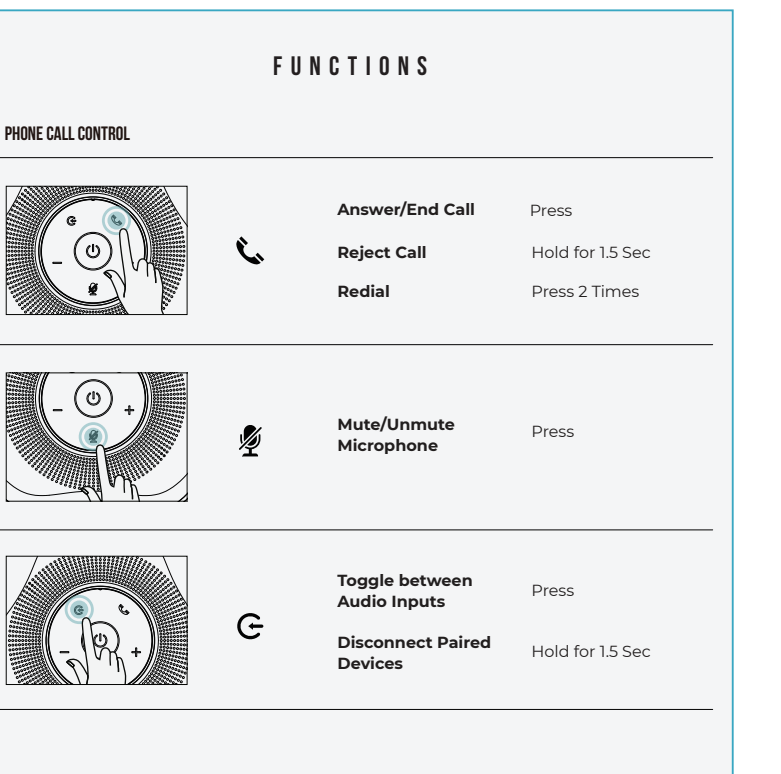
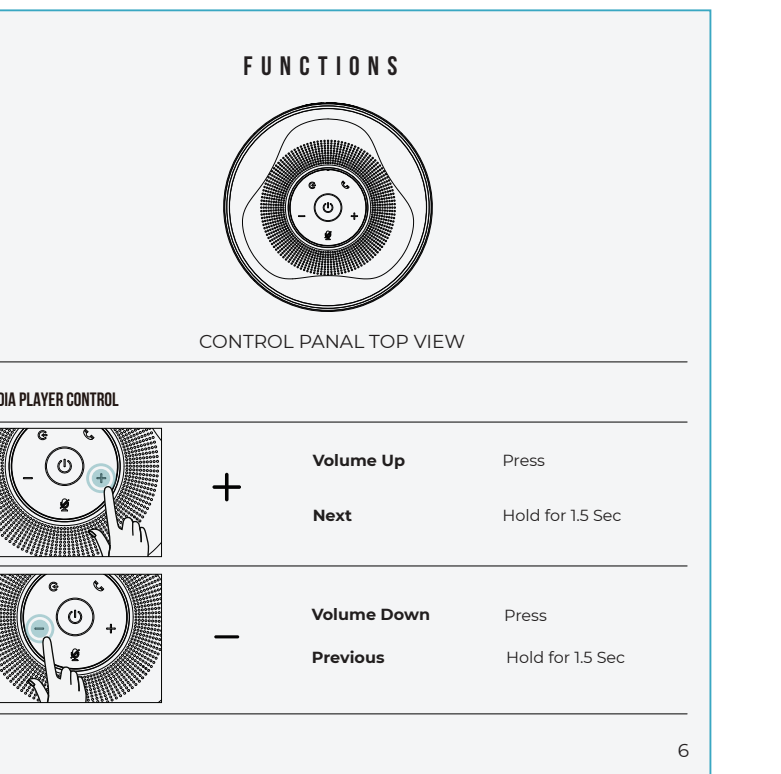
FEATURES AT A GLANCE

- FOUR OMnidirectional MICS**
A great idea can come from anywhere in the room, that's why the Work Speaker features an omnidirectional mic setup.
- SMART VOICE ENHANCEMENT**
Nothing derails a conversation like "excuse me, can you repeat that?" So we designed the Work Speaker with Smart Voice Enhancement.
- VOICE DIRECTION INDICATOR**
The Work Speaker has a Voice Direction Indicator, so you know exactly where everyone is coming from.
- CONVENIENT CONTROLS WITH MUTE BUTTON**
The Work Speaker works hard and works smart with convenient controls and a mute button.
- THREE SOUND PROFILES**
Control what you hear with Three Unique Sound Profiles.
- 8 HOURS OF PLAYTIME**
With 8 hours of playtime, the Work Speaker is with you until the job is done.



QUICK START GUIDE

- Hold "⏻" for about 3 seconds to power on. The Speaker will enter pairing mode automatically.
- From the source device, go to Bluetooth settings and ensure Bluetooth is on. Search for "The Work Speaker" and select it to pair.
- Enjoy your Raycon Work Speaker!



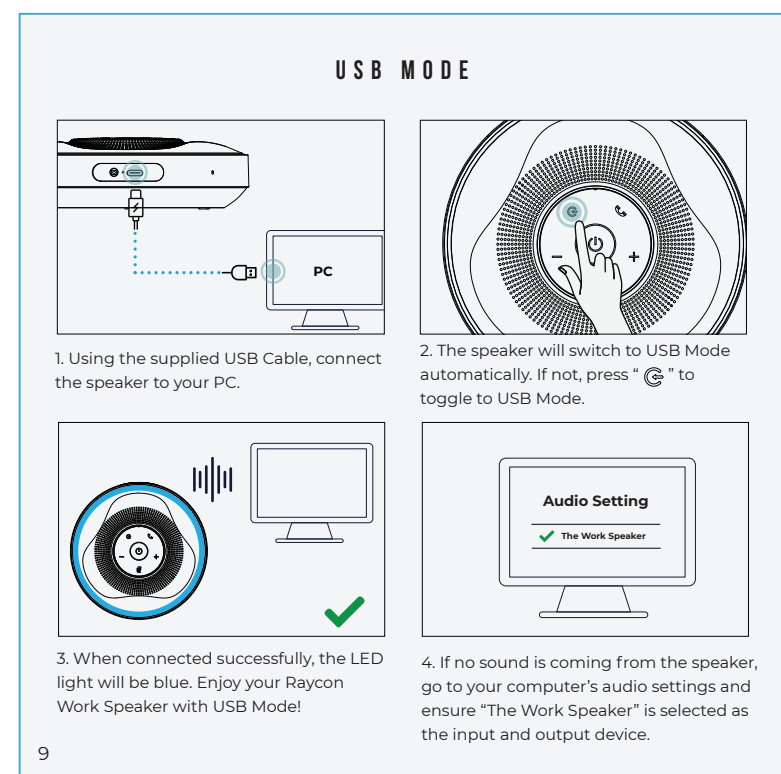
LED LIGHTS

Hold "⏻" and "⏻" for 2 seconds to turn off/on the LED lights.

AUX-OUT MODE

Connect your Work Speaker to an external speaker with AUX Mode. The speaker will automatically switch to AUX Mode when a compatible device is connected using the audio cable.

While speaker is in AUX Mode, the speaker will be muted automatically, and all sound will go through the connected external speaker. Disconnect audio cable to exit AUX Mode.



SOUND PROFILES

Your sound, your way! As our sound profiles were crafted by artists and producers at the top of the industry, you're in good hands.

- BASS SOUND**
Our bass boosted sound, great for songs with strong beats and a go-to for bass lovers.
- BALANCED SOUND**
A leveled sound that is great for all around performance and clarity.
- PURE SOUND**
Our most refined sound, perfect clarity to hear every single note.

RESET FUNCTION

Toggle between Sound Profiles: Hold for 1.5 sec

RESET FUNCTION

If the speaker does not turn off or respond, the speaker can be reset by inserting a small round pin into the Aux Port to press the button inside. Please be gentle when inserting pin.

SAFETY GUIDELINES

- Be wary of any edges, uneven surfaces, and metal parts, including on accessories and product packaging, to prevent any possible injury or damage.
- Listen to music at a proper volume to avoid damaging your hearing and speaker.
- Do not store in high temperatures, such as in a hot vehicle or in direct sunlight.
- Store in cool and dry area.

SAFETY GUIDELINES

- Do not drop or cause undue impact to the speaker.
- Do not modify, repair, or dismantle the product on your own.
- Do not expose speaker and any of its supplied parts to liquid such as rain for prolonged periods of time. Please see IPX-Rating for more guidelines.
- Do not expose the speaker to water while charging, as doing so may result in damage to the speaker or the power source.
- When cleaning this speaker, use a soft dry cloth. For more severe stains, dampen the cloth with water only. Anything else increases the chance of dissolving the paint or damaging the plastic.

FAQ & ADDITIONAL RESOURCES

Visit: www.rayconglobal.com/support.

SUPPORT

If your device is not functioning correctly, please visit www.rayconglobal.com/support for customer support, and we will be more than happy to help you.

LIMITED WARRANTY

Visit: www.rayconglobal.com/warranty.

SPECIFICATIONS

Model Number: RBS980	Bluetooth Pairing Name: The Work Speaker
RDIID: D980-21E-Q321	Speaker
Bluetooth Version: V5.0	Battery Capacity: 3.7V, 2600mAh
Speaker Size: 3.5 inch x 2	Play time: 8 Hours
Power Output: 3W, 4Q	Frequency Response: 80Hz-12kHz
Dimension: 390 x 137 x 175mm	Bluetooth Range: Up to 10 Meters

FCC WARNING

This device complies with part 15 of the FCC Rules. Operation is subject to the following two conditions: (1) this device may not cause harmful interference, and (2) this device must accept any interference received, including interference that may cause undesired operation. Any changes or modifications not expressly approved by the party responsible for compliance could void the user's authority to operate the equipment.

NOTE: This equipment has been tested and found to comply with the limits for a Class B digital device, pursuant to Part 15 of the FCC Rules. These limits are designed to provide reasonable protection against harmful interference in a residential installation. This equipment generates, uses, and can radiate radio frequency energy and, if not installed and used in accordance with the instructions, may cause harmful interference to radio communications. However, there is no guarantee that interference will not occur in a particular installation. If this equipment does cause harmful interference to radio or television reception, which can be determined by turning the equipment off and on, the user is encouraged to try to correct the interference by one or more of the following measures:

- Reorient or relocate the receiving antenna.
- Increase the separation between the equipment and receiver.
- Connect the equipment into an outlet on a circuit different from that to which the receiver is connected.

- Consult the dealer or an experienced radio/TV technician for help. The device has been evaluated to meet general RF exposure statement. The device can be used in portable exposure condition without restriction.

IC CAUTION:
Radio Standards Specification RSS-Gen, issue 5

- English:
This device contains licence-exempt transmitter(s)/receiver(s) that comply with Innovation, Science and Economic Development Canada's licence-exempt RSS(s). Operation is subject to the following two conditions:
This device may not cause interference.
This device must accept any interference, including interference that may cause undesired operation of the device.

- French:
Cet appareil contient des émetteurs / récepteurs exempts de licence conformes aux RSS (RSS) d'Innovation, Sciences et Développement économique Canada. Le fonctionnement est soumis aux deux conditions suivantes:
Cet appareil ne doit pas causer d'interférences.
Cet appareil doit accepter toutes les interférences, y compris celles susceptibles de provoquer un fonctionnement indésirable de l'appareil.

FCC ID: 2AZOV-RBS980
IC: 27185-RBS980

