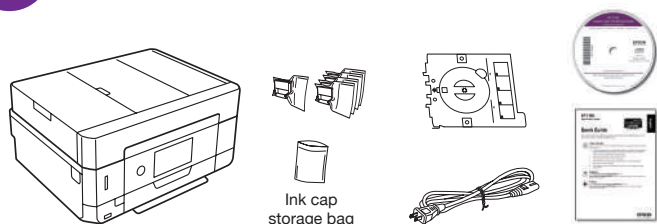


# XP-7100 Small-in-One® Printer Start Here

**IMPORTANT:** Before using this product, make sure you read these instructions and the safety instructions in the online *User's Guide*.

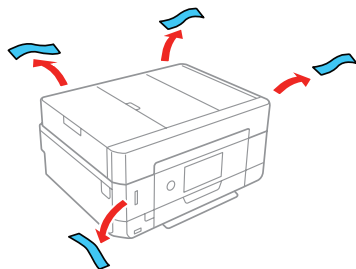
## 1 Unpack



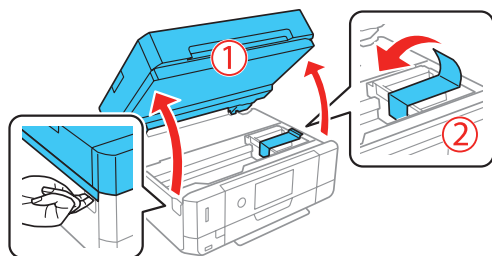
### Note:

- Do not open ink cartridge packages until you are ready to install the ink. Cartridges are vacuum packed to maintain reliability.
- The CD/DVD tray is stored underneath cassette 2.

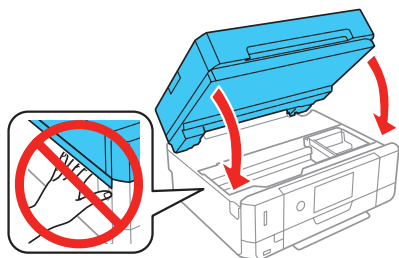
- 1 Remove all protective materials from the product.



- 2 Lift up the scanner unit and remove all protective materials from inside the product.



- 3 Lower the scanner unit.

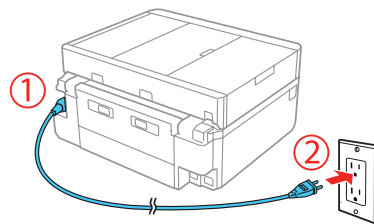


\*413636100\*

**EPSON**  
EXCEED YOUR VISION

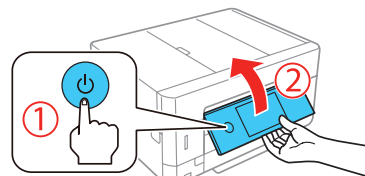
## 2 Turn on and configure

- 1 Connect the power cord to the back of the product and to an electrical outlet.



**Caution:** Do not connect to your computer yet.

- 2 Turn on the product, then adjust the control panel.



- 3 Select your language.

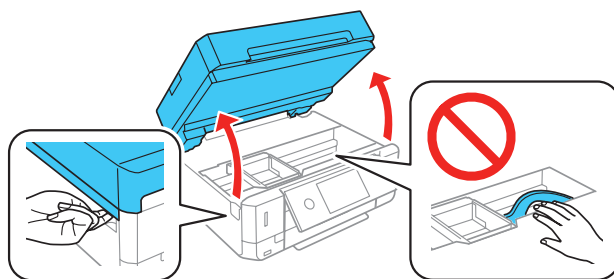
### Note:

- You can change the language later using the product's control panel. For more information, see the online *User's Guide*.
- If an error message appears, turn off the product and check that no protective material has been left inside the product.

## 3 Install ink cartridges

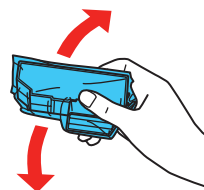
**Caution:** Keep the ink cartridges out the reach of children and do not drink the ink.

- 1 Lift up the scanner unit until it locks into place.

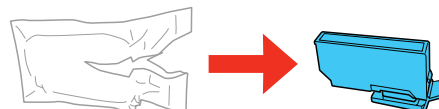


**Caution:** Do not touch the flat, white cable.

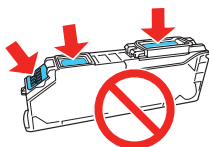
- 2 Gently shake the Black (BK) ink cartridge. Do not shake the Photo Black (PB) or other ink cartridges.



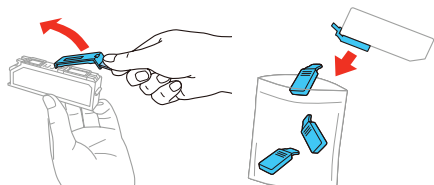
- 3 Unpack the ink cartridges.



**Caution:** Do not touch the areas shown below. Doing so may prevent normal operation and printing.

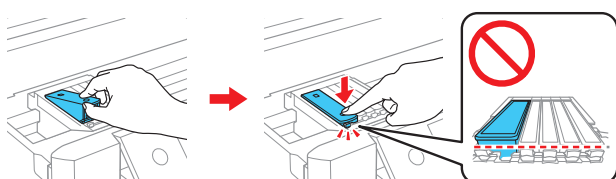


- 4** Remove cap from each ink cartridge. Store the caps in the included plastic bag.

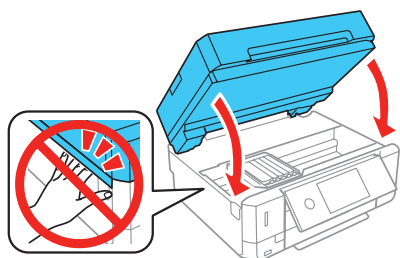


**Note:** Save the caps and use them to recap the ink cartridges after removing them for storage or disposal.

- 5** Insert the cartridges at an angle in the holder for each color. Press each cartridge down until it clicks.



- 6** Lower the scanner unit.



- 7** Select **Installed** to start charging the ink. Ink charging takes approximately 7 minutes. When you see a completion message on the printer's LCD screen, charging is complete.

**Caution:** Don't turn off the printer or raise the scanner unit while the printer is charging or you'll waste ink.

**Note:**

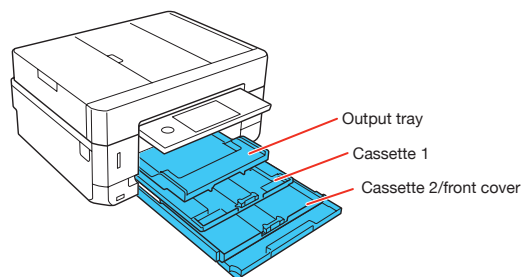
- The printer is designed for use with Epson® cartridges only, not third-party cartridges or ink.
- The cartridges included with the printer are designed for printer setup and not for resale. After some ink is used for charging, the rest is available for printing.
- As part of setup, your product's serial number will be sent to a secure Epson server so that you can be eligible to participate in programs we may offer from time to time, including the Epson ink replenishment program. You will have a separate opportunity to consent to participating in such programs.

- 8** Follow the on-screen instructions to adjust the print quality of your product.

**Note:**

- You need to load paper before you can adjust the print quality. See "Load paper" below for details.
- Select **Adjust Later** on the printer's LCD screen if you want to adjust the print quality later. For more information, see the online *User's Guide*.

## 4 Load paper

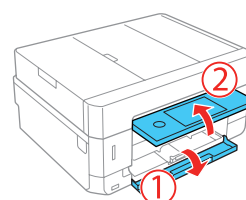


You can load the following paper sizes:

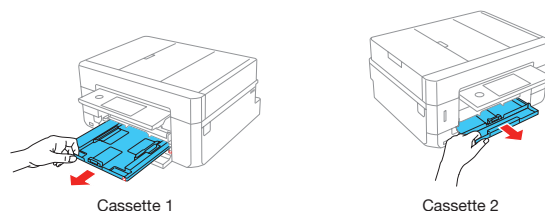
- Cassette 1: 3.5 × 5-, 4 × 6-, or 5 × 7-inch photo paper
- Cassette 2: Letter-, A4-, legal-size, or 8 × 10-inch paper

See the online *User's Guide* for information about available paper types and sizes, loading capacities, and printing on CD/DVD/Blu-ray® discs.

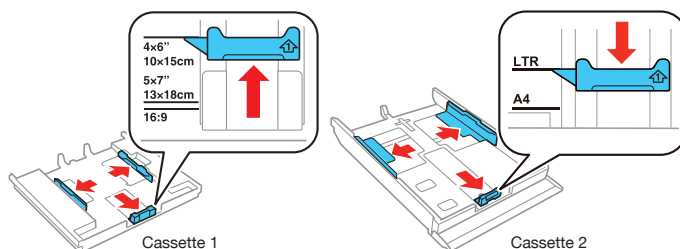
- 1** Lower the front cover and raise the control panel.



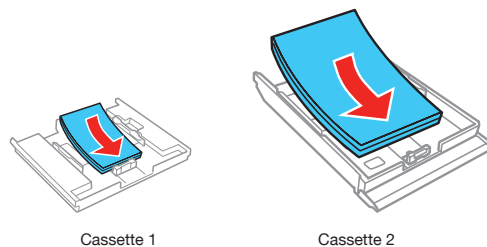
- 2** Pull out a paper cassette.



- 3** Slide the side edge guides outward and set the front edge guide to the paper size you are using.

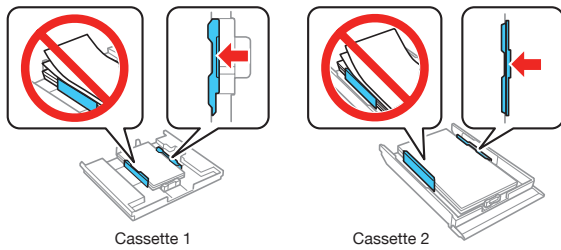


- 4** Insert the paper with the glossy or printable side facedown.

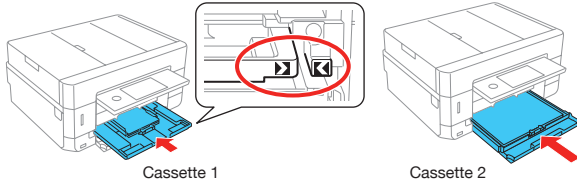


**Note:** Make sure the paper is loaded against the back of the cassette and not sticking out from the front of the cassette.

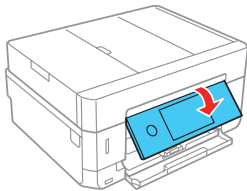
- 5** Slide the side edge guides against the paper, but not too tight. Make sure the paper is under the tabs on the side edge guides.



- 6** Keep the cassette flat as you insert it all the way.



- 7** Lower the control panel.



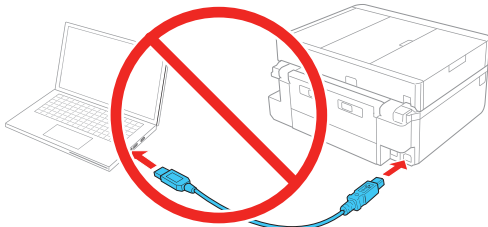
- 8** Select the paper settings on the product's control panel.

## 5 Install software

**Note:** If you are using a Mac or your computer does not have a CD/DVD drive, an Internet connection is required to obtain the product software.

To print from a Chromebook™, go to [www.epson.com/support/gcp](http://www.epson.com/support/gcp) (U.S.) or [www.epson.ca/support/gcp](http://www.epson.ca/support/gcp) (Canada) for instructions.

- 1** Make sure the product is **NOT CONNECTED** to your computer.



**Windows®:** If you see a Found New Hardware screen, click **Cancel** and disconnect the USB cable.

- 2** Insert the product CD (Windows only) or download and run your product's software package. For the latest software, visit: [www.epson.com/support/xp7100](http://www.epson.com/support/xp7100) (U.S.) or [www.epson.ca/support/xp7100](http://www.epson.ca/support/xp7100) (Canada).
- 3** Follow the instructions on the computer screen to run the setup program.

- 4** When you see the Select Your Connection screen, select one of the following and follow the on-screen instructions:

- **Wireless connection**

In most cases, the software installer automatically attempts to set up your wireless connection. If setup is unsuccessful, you may need to enter your network name (SSID) and password.

- **Direct USB connection**

Make sure you have a USB cable (not included).

- **Wired network connection**

Make sure you have an Ethernet cable (not included).

## Mobile printing

Connect wirelessly from your smartphone, tablet, or computer. Print documents and photos from across the room or around the world:

- Print directly from your iOS device. Simply connect your printer and device to the same network and tap the action icon to select the print option.
- Use Epson Print Enabler (free from Google Play™) with Android™ devices (v4.4 or later). Then connect your printer and device to the same network and tap the menu icon to select the print option.
- Print remotely with Epson Connect™ and Google Cloud Print™. See your online *User's Guide* for instructions or learn more at [www.epson.com/connect](http://www.epson.com/connect) (U.S.) or [www.epson.ca/connect](http://www.epson.ca/connect) (Canada).

## Any problems?

### Network setup was unsuccessful.

- Make sure you select the right network name (SSID).
- Restart your router (turn it off and then on), then try to connect to it again.
- The printer can only connect to a network that supports 2.4 GHz connections. If your router offers both 2.4 GHz and 5 GHz connections, make sure the 2.4 GHz connection is enabled.
- If you see a firewall alert message, click **Unblock** or **Allow** to let setup continue.
- If your network has security enabled, make sure you enter your network password (WEP key or WPA passphrase) correctly. Be sure to enter your password in the correct case.

### There are lines or incorrect colors in my printouts.

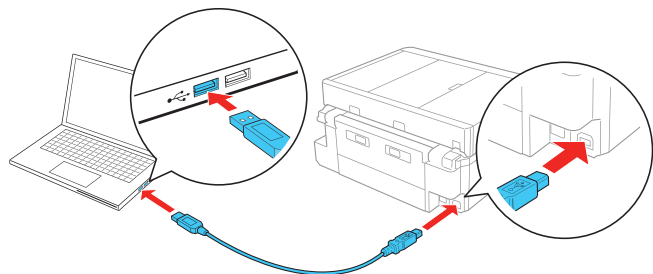
Run a nozzle check to see if there are any gaps in the printout. Then clean the print head, if necessary. See the online *User's Guide* for more information.

### The product's screen is dark.

Make sure your product is turned on, and press any button to wake it from sleep mode.

### Setup is unable to find my printer after connecting it with a USB cable.

Make sure the printer is turned on and that it is securely connected as shown:



## Any questions?

### Quick Guide

Basic information and troubleshooting.

### User's Guide

**Windows:** Click the icon on your desktop or Apps screen to access the online *User's Guide*.

**Mac:** Click the icon in **Applications/Epson Software/Guide** to access the online *User's Guide*.

If you don't have a User's Guide icon, go to the Epson website, as described below.

### Support

Visit [www.epson.com/support/xp7100](http://www.epson.com/support/xp7100) (U.S.) or [www.epson.ca/support/xp7100](http://www.epson.ca/support/xp7100) (Canada) to download drivers, view manuals, get FAQs, or contact Epson.

Call (562) 276-4382 (U.S.) or (905) 709-3839 (Canada), 6 AM to 8 PM, Pacific Time, Monday through Friday, and 7 AM to 4 PM, Pacific Time, Saturday. Days and hours of support are subject to change without notice. Toll or long distance charges may apply.

### Recycling

Epson offers a recycling program for end of life hardware and ink cartridges. Please go to [www.epson.com/recycle](http://www.epson.com/recycle) (U.S.) or [www.epson.ca/recycle](http://www.epson.ca/recycle) (Canada) for information on how to return your products for proper disposal.

## Need paper and ink?

Ensure brilliant results with Epson specialty papers, engineered specifically for Epson printers. Find specialty papers and Epson Genuine Ink at [www.epson.com](http://www.epson.com) (U.S. sales) or [www.epson.ca](http://www.epson.ca) (Canadian sales) and at Epson authorized resellers. Call 800-GO-EPSON (800-463-7766).



DESIGNED *for* EXCELLENCE™

Epson printers, ink and specialty papers.



### XP-7100 replacement ink cartridges

Color	Standard-capacity	High-capacity
● Black	410	410XL
● Cyan	410	410XL
● Magenta	410	410XL
● Yellow	410	410XL
● Photo Black	410	410XL



EPSON and Claria are registered trademarks, EPSON Exceed Your Vision is a registered logomark, and Epson Connect is a trademark of Seiko Epson Corporation.

Small-in-One is a registered trademark and Designed for Excellence is a trademark of Epson America, Inc.

Mac is a trademark of Apple Inc., registered in the U.S. and other countries. iOS is a trademark or registered trademark of Cisco in the U.S. and other countries and is used under license.

Windows is a registered trademark of Microsoft Corporation in the United States and/or other countries.

Android, Chromebook, Google Cloud Print, and Google Play are trademarks of Google LLC.

General Notice: Other product names used herein are for identification purposes only and may be trademarks of their respective owners. Epson disclaims any and all rights in those marks.

This information is subject to change without notice.

© 2018 Epson America, Inc., 5/18