

WF-2830/WF-2850

Start Here

IMPORTANT: Before using this product, make sure you read these instructions and the safety instructions in the online *User's Guide*.

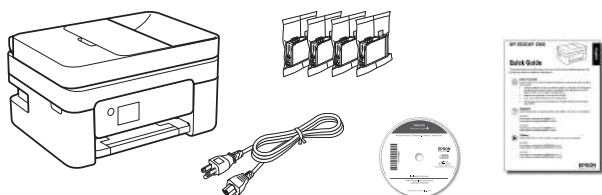
Note: This printer is designed for use with Epson® cartridges only, not third-party cartridges or ink. For important ink information, visit www.epson.com/epsonink (U.S.) or www.epson.ca/epsonink (Canada) or see your printer box.

Important Safety Instructions: When using telephone equipment, you should always follow basic safety precautions to reduce the risk of fire, electric shock, and personal injury, including the following:

- Do not use the Epson product near water.
- Always keep this guide handy.
- Avoid using a telephone during an electrical storm. There may be a remote risk of electric shock from lightning.
- Do not use a telephone to report a gas leak in the vicinity of the leak.

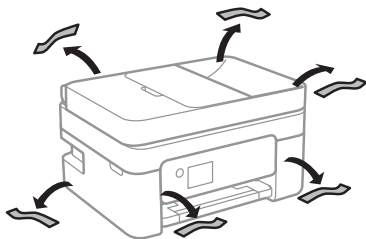
Caution: To reduce the risk of fire, use only a No. 26 AWG or larger telecommunication line cord.

1 Unpack

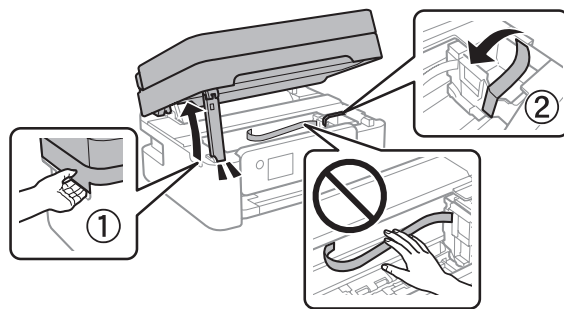


Note: Do not open the ink cartridge packages until you are ready to install the ink. Cartridges are vacuum packed to maintain reliability.

- 1 Remove all protective materials from the product.

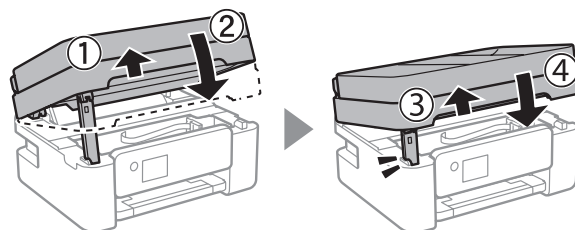


- 2 Lift up the scanner unit until it locks into place and remove all protective materials from inside the product.



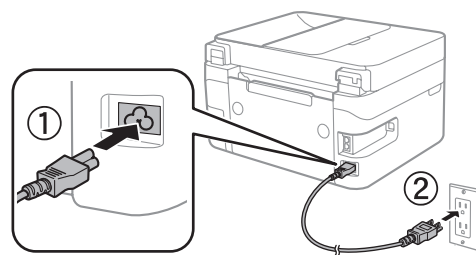
Caution: Do not touch the flat white cable.

- 3 Lift the scanner unit up slightly and lower it. When the scanner unit catches, lift it up again and lower it completely.



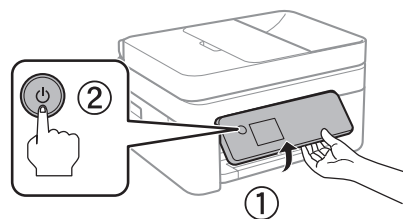
2 Turn on and configure

- 1 Connect the power cord to the back of the product and to an electrical outlet.



Caution: Do not connect to your computer yet.

- 2 Raise the control panel and turn on the product.



- 3 Select your language, country, date, and time on the LCD screen using the buttons on the control panel.

Note: You can change these settings later using the product's control panel. For more information, see the online *User's Guide*.



413765300

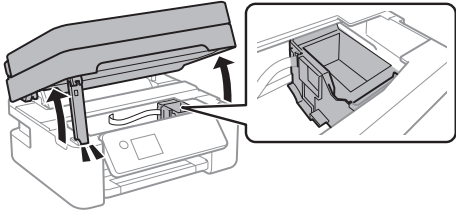
EPSON
EXCEED YOUR VISION

3 Install ink cartridges

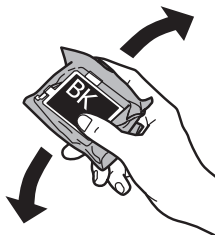
Caution: Keep the ink cartridges out the reach of children and do not drink the ink.

Note: The included initial cartridges are designed for reliable printer setup and cannot be used as replacement cartridges or resold. After setup, the remaining ink is available for printing.

1 Lift up the scanner unit until it locks into place.

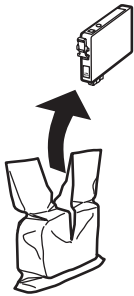


2 Gently shake the Black (BK) ink cartridge.

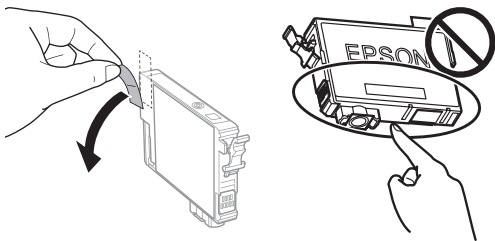


Note: Do not shake the other ink cartridges.

3 Unpack the ink cartridges.

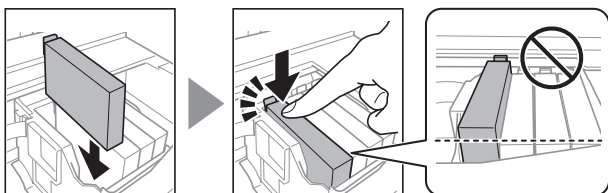


4 Remove only the yellow tape from each ink cartridge.

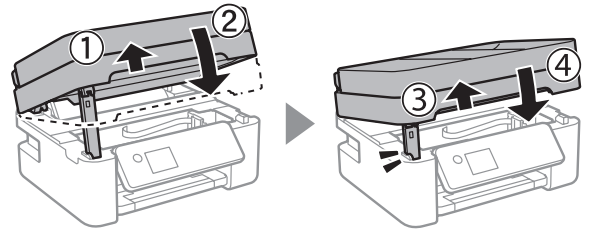


Caution: Do not touch the circled area on the cartridge. Doing so may prevent normal operation and printing.

5 Insert the cartridge in the holder for each color. Press each cartridge down until it clicks. Make sure all cartridges are pushed down into place.



6 Lift the scanner unit up slightly and lower it. When the scanner unit catches, lift it up again and lower it completely.



7 Follow the on-screen instructions to start charging the ink. Ink charging takes approximately 6 minutes. When you see a completion message on the product's LCD screen, charging is complete.

Caution: Don't turn off the printer or raise the scanner unit while the printer is charging or you'll waste ink.

Note: As part of setup, your product's serial number will be sent to a secure Epson server so that you can be eligible to participate in programs we may offer from time to time, including the Epson ink replenishment program. You will have a separate opportunity to consent to participating in such programs.

8 Follow the on-screen instructions to adjust the print quality of your product.

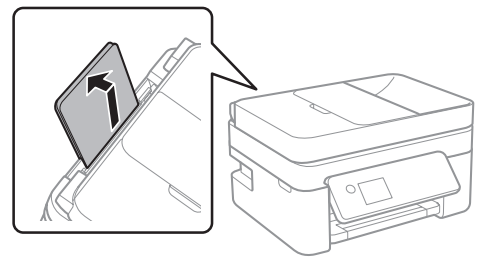
Note:

- You need to load paper before you can adjust the print quality. See "Load paper" below for details.
- Select **Adjust Later** if you want to adjust the print quality later. For more information, see the online *User's Guide*.

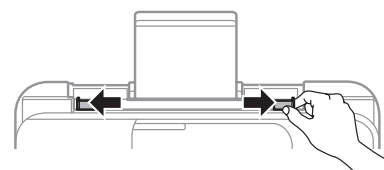
4 Load paper

See the online *User's Guide* for information about loading capacity, available paper types and sizes, and loading envelopes.

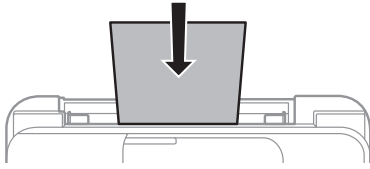
1 Make sure the product is done charging the ink, and then pull out the rear paper support.




2 Slide the edge guides all the way out.



- 3** Load paper, short edge first, in the center of the paper support with the printable side facing up.



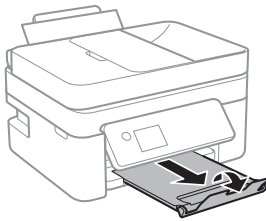
Note: Do not load paper above the line under the  symbol on the edge guide.

- 4** Slide the edge guides against the paper, but not too tightly.



- 5** Select the paper settings on the product's control panel.

- 6** Pull out the output tray and raise the paper stopper.



5 Connect the fax line

- 1** Connect a phone cord to a telephone wall jack and to the **LINE** port on your product. See the online *User's Guide* for more information.
- 2** Select **Proceed** on the LCD screen to set up the fax, or select **Set Up Later** to set it up later.

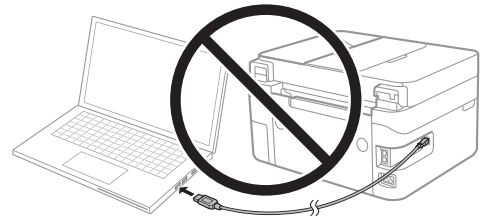
6 Install software

Note:

- If you are using a Mac or your computer does not have a CD/DVD drive, an Internet connection is required to obtain the product software.
- To print from a Chromebook™, go to www.epson.com/support/gcp (U.S.) or www.epson.ca/support/gcp (Canada) for instructions.

Firmware Update Notice: Epson periodically provides firmware updates to address issues of security, performance, minor bug fixes and ensure your printer functions as designed. Your printer was designed to work only with genuine Epson ink cartridges, therefore some updates may affect the functionality of third-party ink.

- 1** Make sure the product is **NOT CONNECTED** to your computer.



Windows®: If you see a Found New Hardware screen, click **Cancel** and disconnect the USB cable.

- 2** Insert the product CD (Windows only) or download and run your product's software package. For the latest software, visit:

WF-2830

www.epson.com/support/wf2830 (U.S.)

www.epson.ca/support/wf2830 (Canada)

WF-2850

www.epson.com/support/wf2850 (U.S.)

www.epson.ca/support/wf2850 (Canada)

- 3** Follow the instructions on the computer screen to run the setup program.
- 4** When you see the Select Your Connection screen, select one of the following and follow the on-screen instructions:

- **Wireless connection**

In most cases, the software installer automatically attempts to set up your wireless connection. If setup is unsuccessful, you may need to enter your network name (SSID) and password.

- **Direct USB connection**

Make sure you have a USB cable (not included).

Mobile and voice-activated printing

- Print directly from your iOS device. Simply connect your printer and device to the same network and tap the action icon to select the print option.
- Print directly from your Android™ (v4.4 or later) device*. Simply connect your printer and device to the same network and tap the menu icon to select the print option.
- Print from wherever you are, next to your printer or remotely, with Epson Connect™ and Google Cloud Print™. See your online *User's Guide* for instructions or learn more at www.epson.com/connect (U.S.) or www.epson.ca/connect (Canada).
- Use voice-activated assistants to print a variety of creative and everyday items from your Epson product. Simply add your product to an Epson Connect account, then link the account to a voice-activated assistant. See www.epson.com/voice (U.S.) or www.epson.ca/voice (Canada) for more information.

* May require the Epson Print Enabler or Mopria Print Service app from Google Play™.

Any problems?

Network setup was unsuccessful.

- Make sure you select the right network name (SSID).
- Restart your router (turn it off and then on), then try to connect to it again.
- The printer can only connect to a network that supports 2.4 GHz connections. If your router offers both 2.4 GHz and 5 GHz connections, make sure 2.4 GHz is enabled.
- If you see a firewall alert message, click **Unblock** or **Allow** to let setup continue.
- If your network has security enabled, make sure you enter your network password (WEP key or WPA passphrase) correctly. Be sure to enter your password in the correct case.

There are lines or incorrect colors in my printouts.

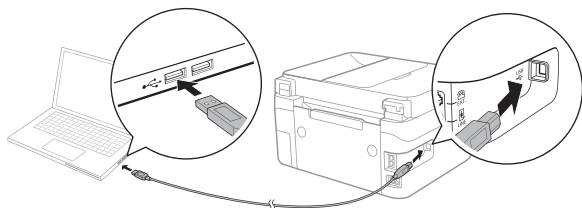
Run a nozzle check to see if there are any gaps in the printout. Then clean the print head, if necessary. See the online *User's Guide* for more information.

The product's screen is dark.

Make sure your product is turned on, and touch the screen or power button to wake it from sleep mode.

Setup is unable to find my printer after connecting it with a USB cable.

Make sure your product is securely connected as shown:



Any questions?

Quick Guide

Basic information and troubleshooting.

User's Guide

Windows: Click the icon on your desktop or Apps screen to access the online *User's Guide*.

Mac: Click the icon in Applications/Epson Software/Guide to access the online *User's Guide*.

If you don't have a User's Guide icon, go to the Epson website, as described below.

Support

Visit www.epson.com/support (U.S.) or www.epson.ca/support (Canada) and search for your product to download drivers, view manuals, get FAQs, or contact Epson.

Call (562) 276-4382 (U.S.) or (905) 709-3839 (Canada), 6 AM to 8 PM, Pacific Time, Monday through Friday, and 7 AM to 4 PM, Pacific Time, Saturday. Days and hours of support are subject to change without notice. Toll or long distance charges may apply.

Recycling

Epson offers a recycling program for end of life hardware and ink cartridges. Please go to www.epson.com/recycle (U.S.) or www.epson.ca/recycle (Canada) for information on how to return your products for proper disposal.

Need paper and ink?

Ensure brilliant results with Epson specialty and plain papers, engineered specifically for Epson printers. Find Epson papers and Epson Genuine Ink at www.epson.com (U.S. sales) or www.epson.ca (Canadian sales) and at Epson authorized resellers. Call 800-GO-EPSON (800-463-7766).



DESIGNED *for*
EXCELLENCE™

Epson printers, ink and specialty papers.



WF-2830/WF-2850 replacement ink cartridges

Color	Standard-capacity	High-capacity
Black	212	212XL
Cyan	212	212XL
Magenta	212	212XL
Yellow	212	212XL



EPSON and Claria are registered trademarks, EPSON Exceed Your Vision is a registered logomark, and Epson Connect is a trademark of Seiko Epson Corporation.

Designed for Excellence is a trademark of Epson America, Inc.

Windows is a registered trademark of Microsoft Corporation in the United States and/or other countries.

Mac is a trademark of Apple Inc., registered in the U.S. and other countries.

Android, Google Cloud Print, Chromebook, and Google Play are trademarks of Google LLC.

General Notice: Other product names used herein are for identification purposes only and may be trademarks of their respective owners. Epson disclaims any and all rights in those marks.

This information is subject to change without notice.