

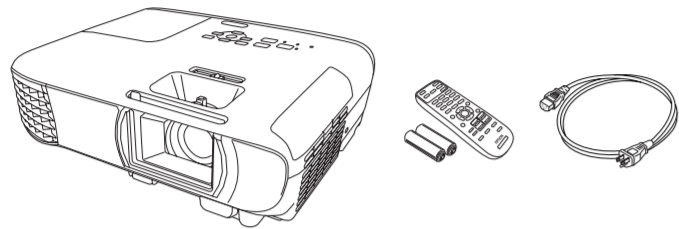
## Quick Setup

**IMPORTANT:** Before using this product, make sure you read these instructions and the safety instructions in the online *User's Guide*.

**Note:** These illustrations show the Home Cinema 1080, but the instructions are the same for the Home Cinema 880 unless otherwise noted.

## Contents

Make sure your projector box includes all of these parts:

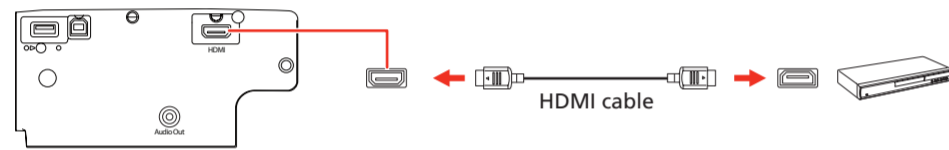


## Connect the projector

### Video device

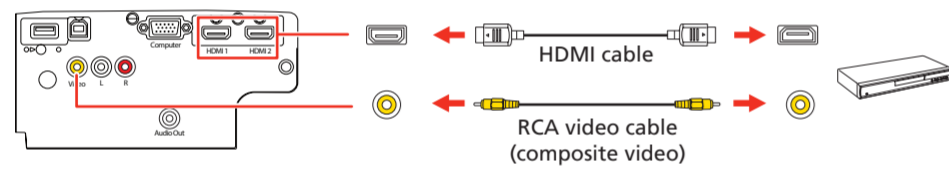
#### Home Cinema 880

Connect one end of an HDMI cable to the projector's **HDMI** port and the other end to an HDMI port on your video device.



#### Home Cinema 1080

Connect multiple video devices and use the **Source Search** button on the projector or the remote control to switch between them.



### Computer

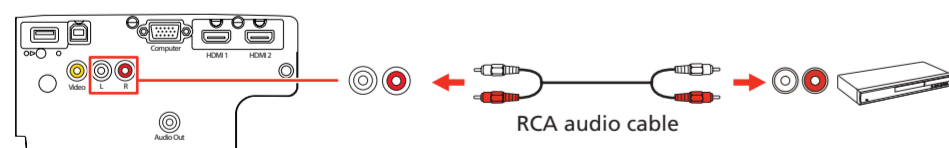
Connect one end of an HDMI cable to the projector's **HDMI** port and the other end to an HDMI port on your computer.

**Note:** For more information on connecting the projector to your computer or other devices (camera, USB flash drive, etc.), see the online *User's Guide*.

## Connect audio

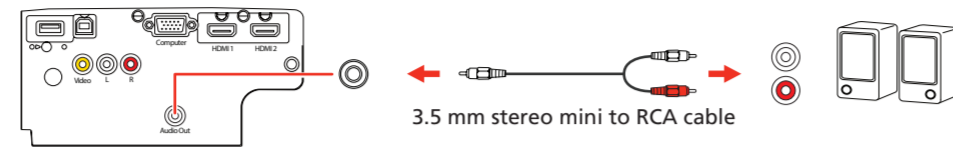
### Built-in speaker

The projector has a built-in speaker that can play audio from a video source (DVD player, streaming device, etc.) connected by an HDMI cable. If you connected a composite video cable to the Home Cinema 1080, connect one end of an RCA audio cable to the projector's audio input ports and the other end to your video device's audio output ports.



### External speakers

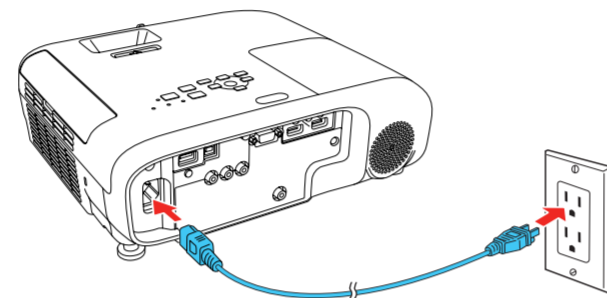
You can connect the projector to external self-powered speakers through the **Audio Out** port.



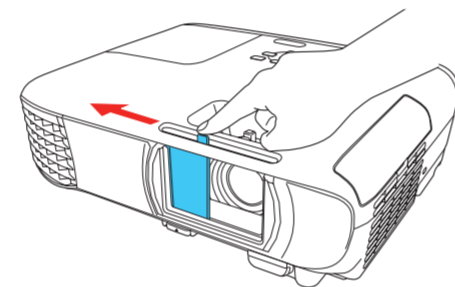
**Note:** The projector's internal speaker is disabled when you connect external speakers.

## Turn on your equipment

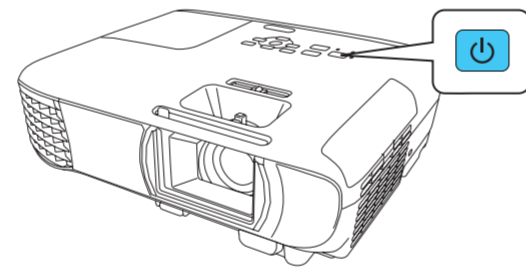
- 1 Turn on your computer or video source.
- 2 Plug in the projector. The power light on the projector turns blue.



- 3 Open the A/V Mute slide all the way.

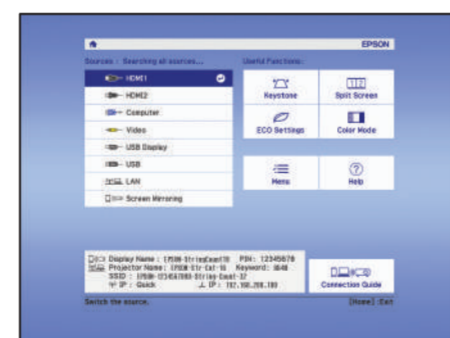


- 4 Press the power button on the projector or remote control. The projector beeps, the Status light flashes blue, and then stays on.



**Note:** To shut down the projector, press the power button twice.

- 5 Use the arrow buttons on the remote control to highlight any of the options on the Home screen that appears, then press the enter button to select it. You can switch between projection sources and quickly access various adjustment options from this screen.



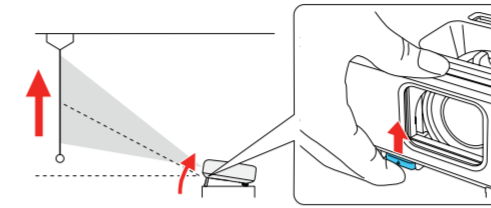
- 6 The default language of the menu system is English. To select another language, press the **Menu** button on the projector or remote control. Select **Extended** and press the enter button. Select **Language** and press the enter button. Select your language and press the enter button. Press the **Menu** button to exit the menu system.

## Adjust the image

- 1 If you don't see an image, press the **Source Search** button on the projector or remote control to select the image source.

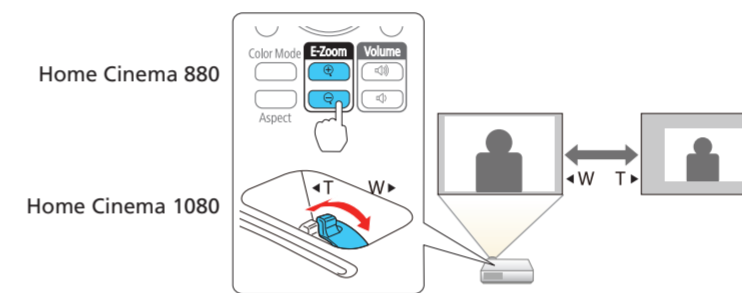
**Note:** If you still see a blank screen or have other display problems, see the troubleshooting tips on the back of this sheet.

- 2 To raise the image, press the foot release button and lift the front of the projector. Release the button to lock the foot in position.

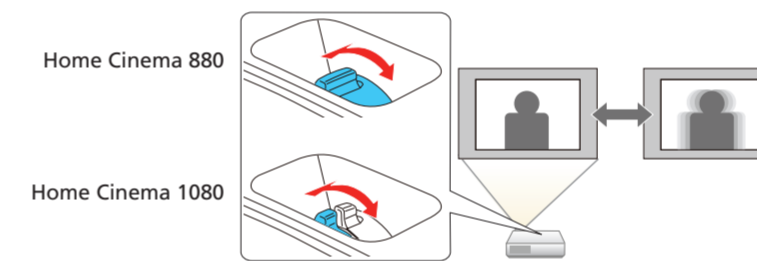


- 3 **Home Cinema 880:** To reduce or enlarge the image, press the **E-Zoom** buttons on the remote control.

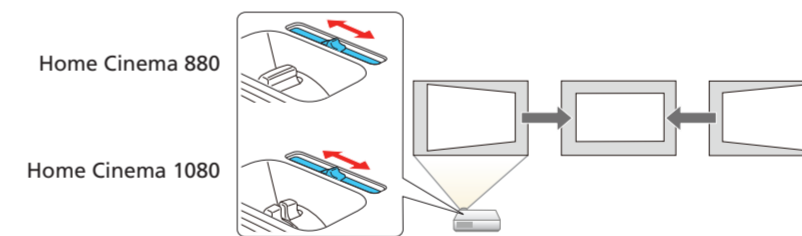
**Home Cinema 1080:** To reduce or enlarge the image, turn the zoom ring.



- 4 To sharpen the image, turn the focus ring.



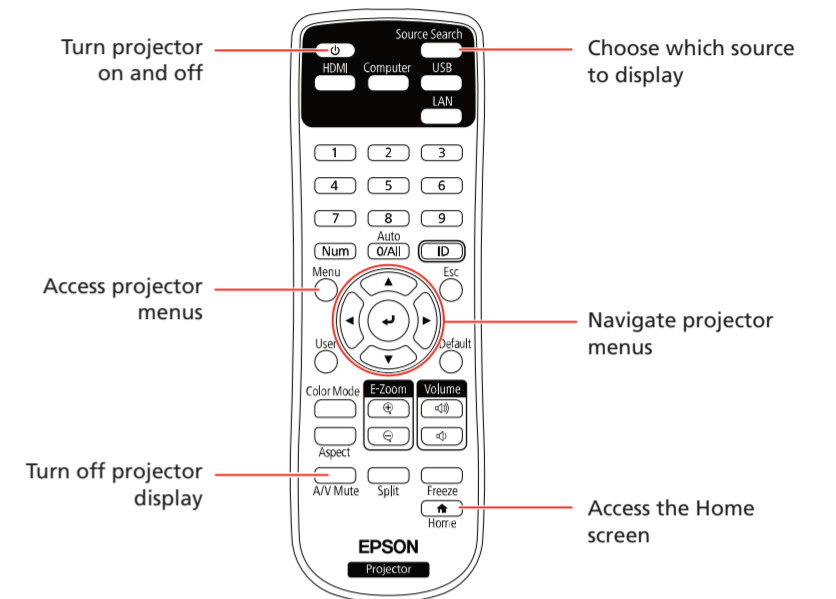
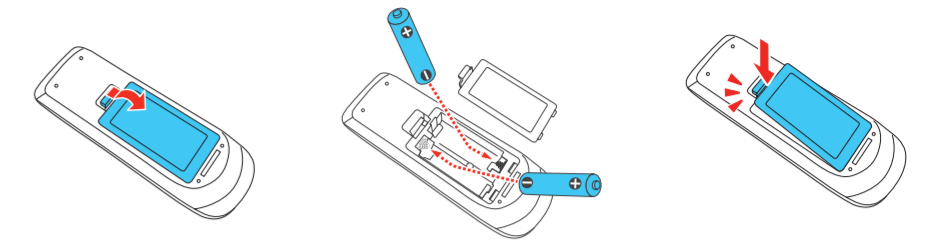
- 5 If your image looks like a trapezoid or a rectangle, you may have placed the projector off to one side of the screen at an angle. Place the projector directly in front of the center of the screen, facing the screen squarely. If you can't move the projector, use the horizontal keystone slider on the projector to correct the image shape.



- 6 Your projector automatically adjusts an image that looks like a trapezoid or a rectangle, but if necessary you can press the **W** or **T** button on the projector to correct it.

## Using the remote control

Install the batteries as shown (two AA batteries).



For more information on using the remote control, see the online *User's Guide*.

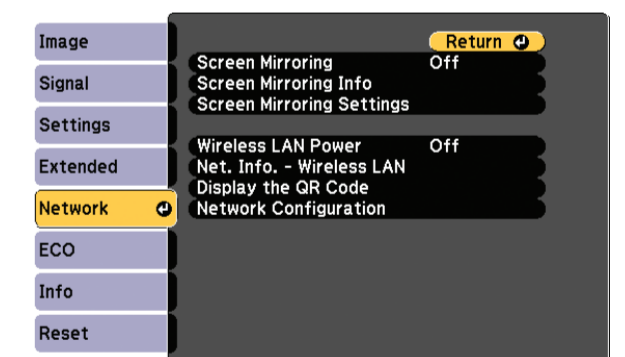
## Mirroring a mobile device

**Home Cinema 1080:** If your mobile device (laptop, smartphone, or tablet) supports Miracast®, you can project or mirror your device's screen wirelessly. You do not need any additional software to use this feature.

**Note:** Some restrictions apply. See the online *User's Guide* for details.

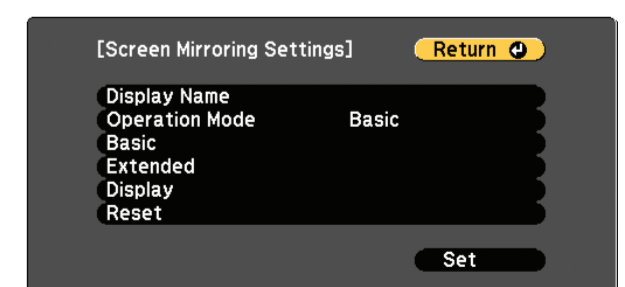
### Select screen mirroring settings

- 1 Press the **Menu** button on the remote control.
- 2 Select the **Network** menu and press the enter button.
- 3 Select **On** as the **Screen Mirroring** setting.



- 4 Select **Screen Mirroring Settings** and press the enter button. Press the enter button again.

- 5 Select any of the **Screen Mirroring Settings** options as necessary. See the online *User's Guide* for details.



- 6 When you finish selecting settings, select **Set** and follow the on-screen instructions to save your settings and exit the menus.



## Connect your device

- 1 Press the **LAN** button on the remote control. You see the Screen Mirroring standby screen.
- 2 Use the Miracast function on your device to search for the projector. You see a list of available devices.



**Note:** *See your device's documentation for details on using its Miracast function.*

- 3 If you see a PIN entry screen on your device, enter the PIN code displayed on the Screen Mirroring standby screen or at the bottom right of the projected image.

The projector displays the image from your device once a connection is established.

**Caution:** *It may take some time to establish a connection. Do not disconnect the projector's power cord while it is connecting to your device. Doing so may cause your device to freeze or malfunction.*

## Troubleshooting

- If you see a **No signal** message after turning on the projector, make sure your computer or video device is properly connected, and press the **Source Search** button.
- If you see a blank screen, check the following:
  - Make sure the AV Mute slide is open all the way.
  - Make sure the Status light on the projector is blue and not flashing.
  - Press the  power button to wake the projector from standby or sleep mode, if necessary.
- If you see a blank screen when a computer is connected, check the following:
  - On some Windows® laptops, you may need to hold down the **Fn** key and press **F7** or the function key that lets you display on an external monitor. It may be labeled **CRT/LCD** or have an icon such as .
  - On Windows 7 or later, hold down the Windows key and press **P** at the same time, then click **Duplicate**.
  - If you're using a Mac laptop, open **System Preferences** and select **Displays**. Click the **Arrangement** tab and select the **Mirror Displays** checkbox.
- If the projector does not respond to remote control commands, make sure the batteries in the remote control are installed correctly. Replace the batteries if necessary.

## Registration

Register today to get product updates and exclusive offers. You can register online at [www.epson.com/webreg](http://www.epson.com/webreg).

## Where to get help

### Manuals

For more information about using the projector, you can view or download the online manuals from the Epson website, as described below.

### Internet support

Visit [www.epson.com/support](http://www.epson.com/support) (U.S.) or [www.epson.ca/support](http://www.epson.ca/support) (Canada) and search for your product to download software and utilities, view manuals, get FAQs and troubleshooting advice, or contact Epson.

### Telephone support services

To use the Epson® PrivateLine® Support service, call (800) 637-7661. This service is available for the duration of your warranty period. You may also speak with a support specialist by calling (562) 276-4394 (U.S.) or (905) 709-3839 (Canada).

Support hours are 6 AM to 8 PM, Pacific Time, Monday through Friday, and 7 AM to 4 PM, Pacific Time, Saturday. Days and hours of support are subject to change without notice. Toll or long distance charges may apply.

## Optional accessories

For a list of optional accessories, see the online *User's Guide*.

You can purchase screens or other accessories from an Epson authorized reseller. To find the nearest reseller, call 800-GO-EPSON (800-463-7766). Or you can purchase online at [www.epsonstore.com](http://www.epsonstore.com) (U.S. sales) or [www.epsonstore.ca](http://www.epsonstore.ca) (Canadian sales).



EPSON is a registered trademark and EPSON Exceed Your Vision is a registered logomark of Seiko Epson Corporation.

PrivateLine is a registered trademark of Epson America, Inc.

Windows is a registered trademark of Microsoft Corporation in the United States and/or other countries.

Mac is a trademark of Apple Inc., registered in the U.S. and other countries.

General Notice: Other product names used herein are for identification purposes only and may be trademarks of their respective owners. Epson disclaims any and all rights in those marks.

This information is subject to change without notice.

© 2020 Epson America, Inc., 3/20

Printed in XXXXXX

CPD-58869