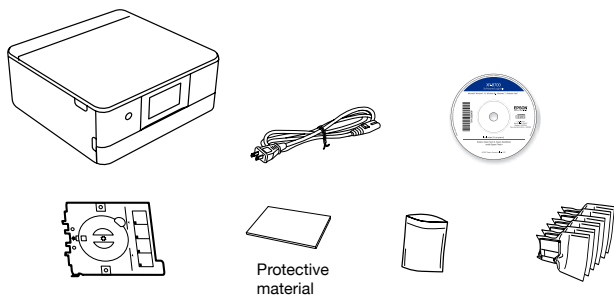


# XP-8700 Small-in-One Start Here

**IMPORTANT:** Before using this product, make sure you read these instructions and the safety instructions in the online *User's Guide*.

**Note:** This printer is designed for use with Epson® cartridges only, not third-party cartridges or ink. For important ink information, visit <http://epson.com/epsonink> (U.S.) or <http://epson.ca/epsonink> (Canada) or see your printer box.

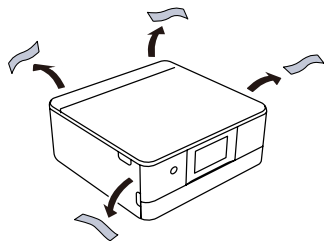
## 1 Unpack



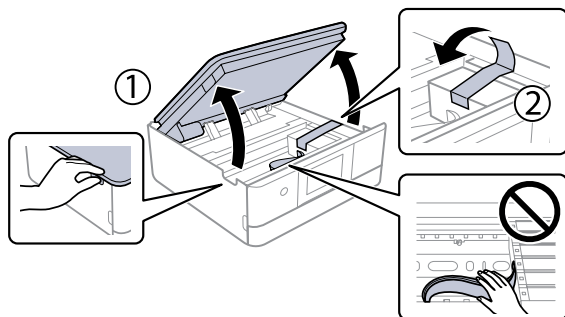
**Note:**

- Do not open ink cartridge packages until you are ready to install the ink. Cartridges are vacuum packed to maintain reliability.
- Do not throw away the protective material shown above. Tape this piece to the top of the ink cartridge holder when transporting your product. For more information, see the online *User's Guide*.
- The CD/DVD tray is stored underneath cassette 2.

- 1 Remove all tape and packing materials from the product.

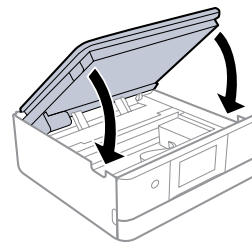


- 2 Lift up the scanner unit. Remove all tape and packing materials from inside the product.

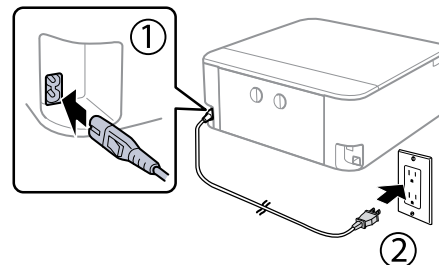


**Caution:** Do not touch the flat, white cable.

- 3 Lower the scanner unit.



- 4 Connect the power cord to the back of the printer and to an electrical outlet.



**Caution:** Do not connect to your computer yet.

## 2 Choose a setup method

The Epson Smart Panel® app can help you set up your printer through an interactive, step-by-step process using your smartphone or tablet.



or



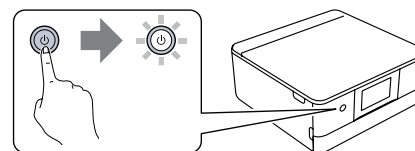
To use your mobile device for setup, continue to step 1.

If you do not want to use a mobile device for setup, skip to the “Turn on and configure” section.

- 1 Download the Epson Smart Panel app from your device's app store. Do not launch the app yet.



- 2 Press the power button to turn on the product.



**Note:** Do not connect your product to your computer yet.

- 3 Launch the app and follow its instructions to set up your product.

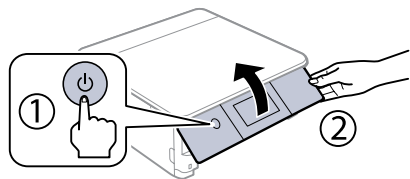
For information on connecting your product to a computer, using voice-activated printing, or solving problems, or for details on reaching Epson support, see the sections on the back of this sheet.



**EPSON®**  
EXCEED YOUR VISION

## 3 Turn on and configure

- 1 Turn on the product, then adjust the control panel.



- 2 Select your language on the LCD screen.

**Note:**

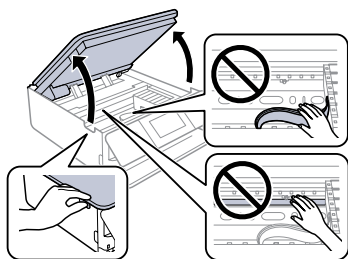
- You can change this setting later using the product's control panel. For more information, see the online *User's Guide*.
- If an error message appears, turn off the product and check that no protective material has been left inside the product.

## 4 Install ink cartridges

**Caution:** Keep the ink cartridges out the reach of children and do not drink the ink.

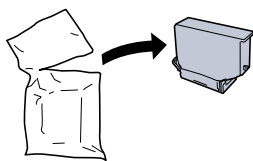
**Note:** The included initial cartridges are designed for reliable printer setup and cannot be used as replacement cartridges or resold. After setup, the remaining ink is available for printing.

- 1 Lift up the scanner unit.



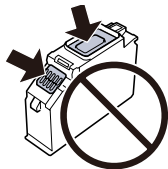
**Caution:** Do not touch the flat, white cable or the print head path.

- 2 Unpack the ink cartridges.

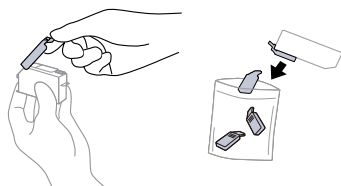


**Caution:**

- Do not shake the ink cartridges.
- Do not touch the areas shown below. Doing so may prevent normal operation and printing.

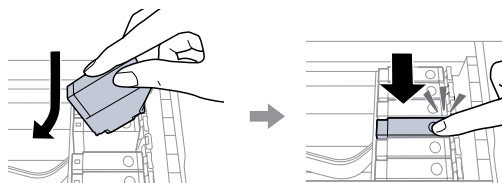


- 3 Remove the cap from each ink cartridge. Store the caps in the included plastic bag.

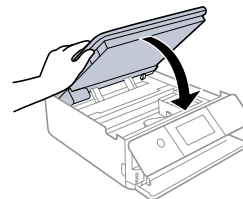


**Note:** Save the caps and use them to recap the ink cartridges after removing them for storage or disposal.

- 4 Insert the cartridges at an angle in the holder for each color. Press each cartridge down until it clicks.



- 5 Lower the scanner unit.



- 6 Select **Installed**. Ink charging takes approximately 10 minutes. When you see a completion message on the printer's LCD screen, charging is complete.

**Caution:** Don't turn off the printer or raise the scanner unit while the printer is charging or you'll waste ink.

**Note:** As part of setup, your product's serial number will be sent to a secure Epson server so that you can be eligible to participate in programs we may offer from time to time, including the Epson ink replenishment program. You will have a separate opportunity to consent to participating in such programs.

- 7 Follow the on-screen instructions to adjust the print quality of your product.

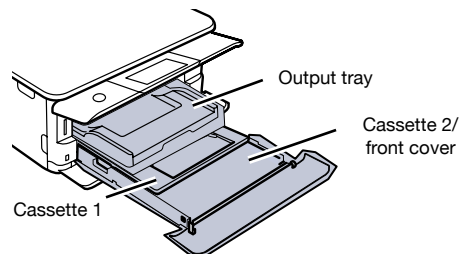
**Note:**

- You need to load paper before you can adjust the print quality. See the "Load paper" section for details.
- Select **Adjust Later** if you want to adjust the print quality later. For more information, see the online *User's Guide*.

## 5 Load paper

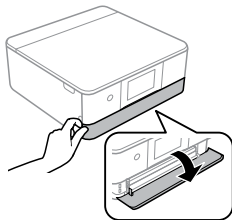
See the instructions below for loading paper in cassettes 1 and 2.

**Note:** See the online *User's Guide* for a complete list of compatible paper types, sizes, and capacities, and instructions on loading paper in the rear paper feed slot and printing on CD/DVD/Blu-ray Discs™.

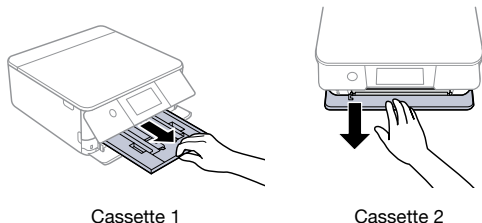


Epson paper sizes	Cassette 1	Cassette 2
4" x 6", 5" x 7"	•	•
8" x 10", Letter, A4, Legal		•

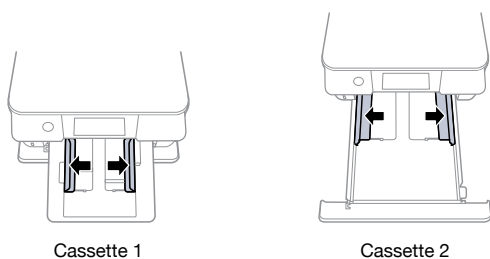
- 1 Lower the front cover.



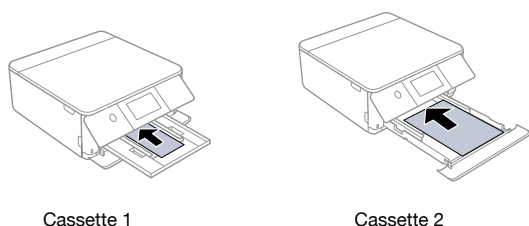
- 2 Pull out a paper cassette.



- 3 Slide the side edge guides outward.

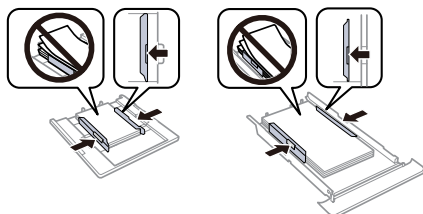


- 4 Insert the paper with the glossy or printable side facedown.

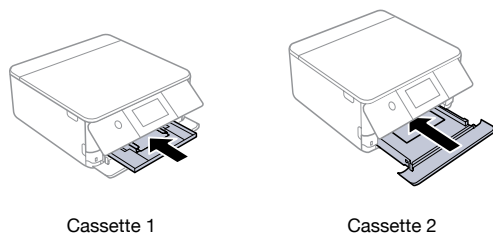


**Note:** Make sure the paper is loaded against the back of the cassette and not sticking out from the front of the cassette.

- 5 Slide the side edge guides against the paper, but not too tightly. Make sure the paper is under the tabs on the side edge guides.



- 6 Keep the cassette flat as you insert it all the way.



- 7 Select the paper settings on the product's control panel.

## 6 Install software

### Note:

- If you are using a Mac or your computer does not have a CD/DVD drive, an Internet connection is required to obtain the product software.
- To print from a Chromebook™, go to <http://epson.com/support/chromebookprint> (U.S.) or <http://epson.ca/support/chromebookprint> (Canada) for instructions.

**Firmware Update Notice:** The printer is designed to work only with genuine Epson-branded cartridges. Other brands of ink cartridges and ink supplies are not compatible and, even if described as compatible, may not function properly or at all. Epson periodically provides firmware updates to address issues of security, performance, minor bug fixes and ensure the printer functions as designed. These updates may affect the functionality of third-party ink. Non-Epson branded or altered Epson cartridges that functioned prior to a firmware update may not continue to function.

- 1 Make sure the product is **NOT CONNECTED** to your computer.

**Windows®:** If you see a Found New Hardware screen, click **Cancel** and disconnect the USB cable.

- 2 Insert the product CD (Windows only) or download and run your product's software package. For the latest software, visit <http://epson.com/support/xp8700> (U.S.) or <http://epson.ca/support/xp8700> (Canada).

- 3 Follow the instructions on the computer screen to run the setup program.

- 4 When you see the Select Your Connection screen, select one of the following and follow the on-screen instructions:

- **Wireless connection**

In most cases, the software installer automatically attempts to set up your wireless connection. If setup is unsuccessful, you may need to enter your network name (SSID) and password.

- **Direct USB connection**

Make sure you have a USB cable (not included).

## Mobile and voice-activated printing

- Print directly from your Android™ (v4.4 or later) device\*. Simply connect your printer and device to the same network and tap the menu icon to select the print option.
- Turn your mobile device into an intuitive, easy-to-use printing and scanning control center with Epson Smart Panel. Download the app from your mobile device's app store.
- Print remotely with Epson Connect™. See your online *User's Guide* for instructions or learn more at <http://epson.com/connect> (U.S.) or <http://epson.ca/connect> (Canada).
- Use voice-activated assistants to print a variety of creative and everyday items from your Epson product. Simply add your product to an Epson Connect account, then link the account to a voice-activated assistant. See <http://epson.com/voice> (U.S.) or <http://epson.ca/voice> (Canada) for more information.

\* May require the Epson Print Enabler or Mopria Print Service app from Google Play™.

# Any problems?


## Network setup was unsuccessful.

- Print a network connection report to identify network problems and solutions. See your online *User's Guide* for instructions.
- Make sure you select the right network name (SSID).
- Restart your router (turn it off and then on), then try to connect to it again.
- The printer can only connect to a network that supports 2.4 GHz connections. If your router offers both 2.4 GHz and 5 GHz connections, make sure the 2.4 GHz network is enabled.
- If you see a firewall alert message, click **Unblock** or **Allow** to let setup continue.
- If your network has security enabled, make sure you enter your network password (WEP key or WPA passphrase) correctly. Be sure to enter your password in the correct case.

## There are lines or incorrect colors in my printouts.

Run a nozzle check to see if there are any gaps in the printout. Then clean the print head, if necessary. See the online *User's Guide* for more information.

## The product's screen is dark.

Make sure your product is turned on, and touch the screen or press the  power button to wake your product from sleep mode.

## Setup is unable to find my product after connecting it with a USB cable.

Make sure the product is turned on and securely connected.

# Any questions?

## User's Guide

**Windows:** Click the icon on your desktop or Apps screen to access the online *User's Guide*.

**Mac:** Click the icon in **Applications/Epson Software/Guide** to access the online *User's Guide*.

If you don't have a User's Guide icon, go to the Epson website, as shown below.

## Technical support

Visit <http://epson.com/support/xp8700> (U.S.) or <http://epson.ca/support/xp8700> (Canada) to download drivers, view manuals, get FAQs, or contact Epson.

Call (562) 276-4382 (U.S.) or (905) 709-3839 (Canada), 6 AM to 8 PM, Pacific Time, Monday through Friday, and 7 AM to 4 PM, Pacific Time, Saturday. Days and hours of support are subject to change without notice. Toll or long distance charges may apply.

## Recycling

Epson offers a recycling program for end of life hardware and ink cartridges. Please go to <http://epson.com/recycle> (U.S.) or <http://epson.ca/recycle> (Canada) for information on how to return your products for proper disposal.

# Need paper and ink?

Ensure brilliant results with Epson specialty and plain papers, engineered specifically for Epson printers. Find Epson papers and Epson Genuine Ink at <http://epson.com> (U.S. sales) or <http://epson.ca> (Canadian sales) and at Epson authorized resellers. Call 800-GO-EPSON (800-463-7766).



DESIGNED *for* EXCELLENCE™  
Epson printers, ink and specialty papers.



## XP-8700 replacement ink cartridges

Color	Standard-capacity	High-capacity
Black	312120	312XL120
Cyan	312220	312XL220
Magenta	312320	312XL320
Yellow	312420	312XL420
Light Cyan	312520	312XL520
Light Magenta	312620	312XL620



EPSON, Epson Smart Panel, and Claria are registered trademarks, EPSON Exceed Your Vision is a registered logomark, and Epson Connect is a trademark of Seiko Epson Corporation.

Designed for Excellence is a trademark of Epson America, Inc.

Windows is a registered trademark of Microsoft Corporation in the United States and/or other countries.

Mac is a trademark of Apple Inc., registered in the U.S. and other countries.

Android, Chromebook, and Google Play are trademarks of Google LLC.

General Notice: Other product names used herein are for identification purposes only and may be trademarks of their respective owners. Epson disclaims any and all rights in those marks.

This information is subject to change without notice.

© 2021 Epson America, Inc., 7/21