



MFC-J4340DW
MFC-J4440DW
MFC-J4540DW

EN



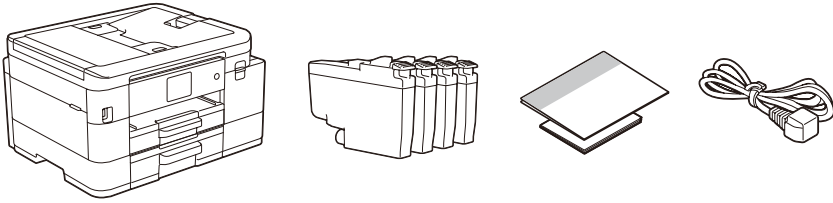
Video setup instructions:
support.brother.com/videos



The latest manuals are available at the Brother support website:
support.brother.com/manuals

1 Unpack the machine and check the components

Remove the protective tape or film covering the machine and the supplies. The components included in the box may differ depending on your country.



* Most of the illustrations in this *Quick Setup Guide* show the MFC-J4540DW.

NOTE

- Save all packing materials and the box in case you must ship your machine.
- **You must purchase the correct interface cable for the interface you want to use.**

USB cable

Use a USB 2.0 cable (Type A/B) that is no more than 2 metres long.

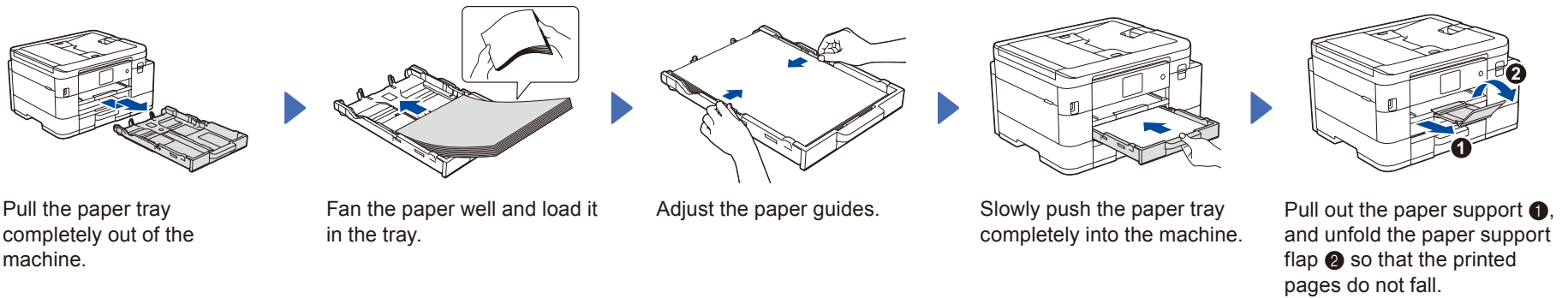
Ethernet (Network) cable (MFC-J4440DW / MFC-J4540DW only)

Use a straight-through Category 5 (or greater) twisted-pair cable for 10BASE-T or 100BASE-TX Fast Ethernet Network.

- Brother aims to reduce waste and save the raw materials and energy required for their production. Read more about our environmental work at www.brotherearth.com.

2 Load plain A4 paper in the paper tray

For more information about paper handling and sizes, see the *Online User's Guide* at support.brother.com/manuals.



Pull the paper tray completely out of the machine.

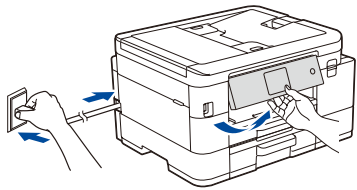
Fan the paper well and load it in the tray.

Adjust the paper guides.

Slowly push the paper tray completely into the machine.

Pull out the paper support ①, and unfold the paper support flap ② so that the printed pages do not fall.

3 Connect the power cord



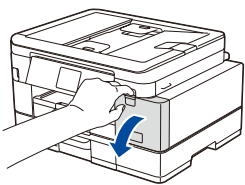
NOTE

You can adjust the control panel angle to read the LCD more easily.

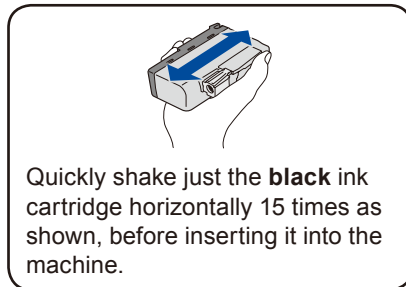
4 Select your country or language

After turning the machine on, you may need to set your country or language (depending on your machine). If required, follow the LCD instructions.

5 Install the inbox ink cartridges



Open the ink cartridge cover.



Quickly shake just the **black** ink cartridge horizontally 15 times as shown, before inserting it into the machine.

Follow the LCD instructions to install the ink cartridges. Close the ink cartridge cover. The machine will prepare the ink tube system for printing.

NOTE

The first time you install a set of ink cartridges the machine will use an amount of ink to fill the ink delivery tubes for high quality printouts. This process will only happen once.

6 Set the date and time

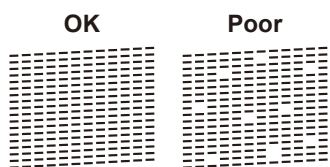
Follow the LCD instructions to set the date and time.

After setting the date and time, you can set the Firmware Update defaults.

7 Check the print quality



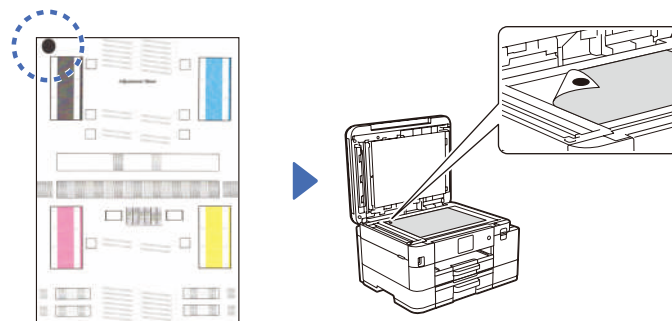
Follow the LCD instructions, and then press [OK] or ►. The machine prints the Print Quality Check Sheet.



Follow the LCD instructions to check the quality of the four colour blocks on the sheet, and then start the cleaning procedure.

8 Adjust the print alignment (recommended)

To adjust the print alignment before using your machine, press [Start] or ►.



Follow the LCD instructions to print the Adjustment Sheet. The black circle mark is located in the upper left corner of the sheet.

Place the Adjustment Sheet face down on the scanner glass. Make sure the black circle mark is in the upper left corner of the scanner glass.

Follow the LCD instructions and complete adjusting the alignment.

When finished, remove the Adjustment Sheet from the scanner glass.





9 Machine settings

Follow the LCD instructions to configure the machine settings.

- (MFC-J4540DW only) Configure the tray setting.
- Check the software installation information.

10 Select your language (if needed)

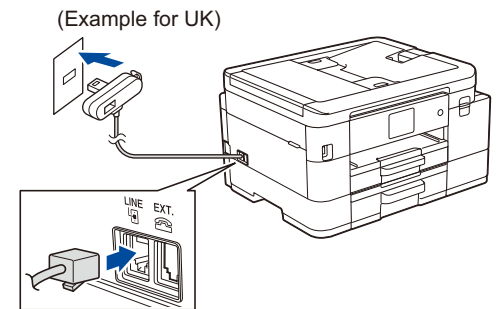
- MFC-J4340DW
 1. Press **Settings**.
 2. Press ▲ or ▼ to select the following:
 - a. Select [Initial Setup], and then press **OK**.
 - b. Select [Local Language], and then press **OK**.
 - c. Select your language, and then press **OK**.
 3. Press **Stop/Exit**.
- MFC-J4440DW / MFC-J4540DW
 1. Press  [Settings] > [All Settings] > [Initial Setup] > [Local Language].
 2. Press your language.
 3. Press .

11 Connect the telephone line cord

If you are not using your machine as a fax, go to **12**. For more information on using the fax feature, see the *Online User's Guide*.

(For Europe)

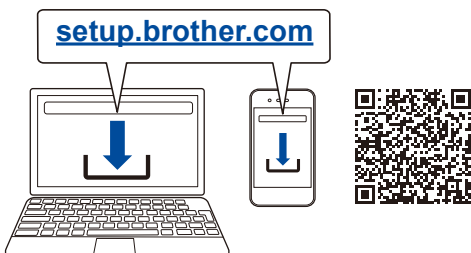
We can send you a genuine Brother cord free of charge if you need one. To contact us, visit www.brother.eu.



12 Connect your computer or mobile device to your machine

Follow these steps to complete the setup using one of the connection types available on your machine.

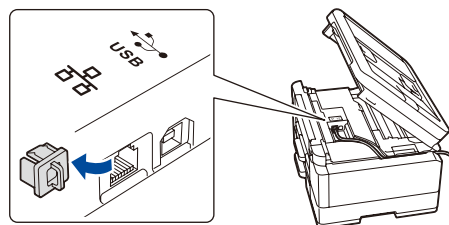
Visit setup.brother.com to download and install Brother software.



Follow the on-screen instructions and prompts.

NOTE

For Wired Network Connection (MFC-J4440DW / MFC-J4540DW only) and USB Connection, locate the correct port (based on the cable you are using) inside the machine as shown.



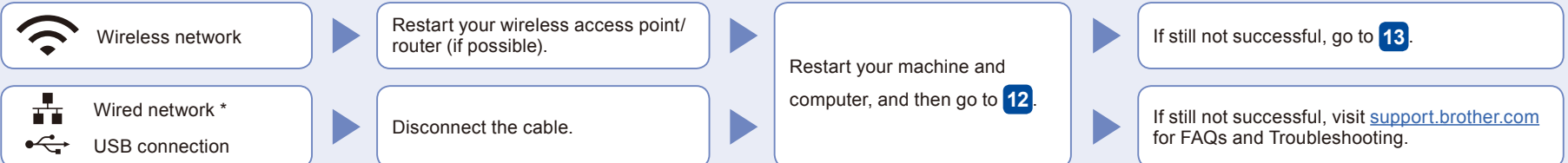
Setup Finished

You can now print and scan using your machine. To check for the latest firmware, visit support.brother.com/up7.

Important Notice for Network Security:

The default password to manage this machine's settings is located on the back of the machine and marked "Pwd". We recommend immediately changing the default password to protect your machine from unauthorised access.

Can't Connect? Check the following:



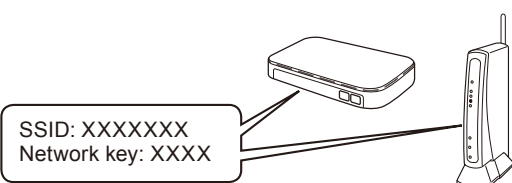
* MFC-J4440DW / MFC-J4540DW only

13 Manual wireless setup


If the wireless setup is not successful, try to set up the connection manually.


Find your SSID (Network Name) and Network Key (Password) on your wireless access point/router and write them in the table provided below.

SSID (Network Name)	
Network Key (Password)	



If you cannot find this information, ask your network administrator or wireless access point/router manufacturer.

- MFC-J4340DW
 1. Go to your machine, and press  on the panel.
 2. Press **OK** to select [Find Wi-Fi Network]. The [Enable WLAN?] message appears on the LCD.
 3. Press ▶ to select Yes.
- MFC-J4440DW / MFC-J4540DW

Go to your machine, and press  > [Find Wi-Fi Network] > [Yes].

Select the SSID (Network Name) for your access point/router and enter the Network Key (Password). When the wireless setup is successful, the LCD displays [Connected].

Go to **12** to install software.

If setup is not successful, restart your Brother machine and your wireless access point/router, and repeat **13**.