

# VM901-1W

## Wi-Fi 1080p

### Pan & Tilt Video Monitor



For more support information

## vtech®

### Quick start guide



## IMPORTANT SAFETY INSTRUCTIONS

The applied nameplate is located at the bottom of the baby unit's base.

When using your equipment, basic safety precautions should always be followed to reduce the risk of fire, electric shock and injury, including the following:

- Follow all warnings and instructions marked on the product.
- Adult setup is required.
- CAUTION:** Do not install the baby unit at a height above 2 metres.
- This product is intended as an aid. It is not a substitute for responsible and proper adult supervision and should not be used as such.
- This product is not intended for use as a medical monitor.
- Do not use this product near water. For example, do not use it next to a bath tub, wash bowl, kitchen sink, laundry tub or swimming pool, or in a wet basement or shower.
- CAUTION:** Use only the battery provided. There may be a risk of explosion if a wrong type of battery is used for the parent unit. The battery cannot be subjected to high or low extreme temperature and low air pressure at high altitude during use, storage or transportation. Disposal of battery into fire or a hot oven, or mechanically crushing or cutting of the battery can result in an explosion. Leaving the battery in an extremely high temperature surrounding environment can result in an explosion or the leakage of flammable liquid or gas. Battery subjected to extremely high pressure may result in an explosion or the leakage of flammable liquid or gas. Dispose of used battery according to the instructions.

- Use only the adapters included with this product. Incorrect adapter polarity or voltage can seriously damage the product.

**Power adapter information:**  
Vtech Telecommunications Ltd.  
Model : VT05EU05100(EU), VT05UK05100(UK).

**Rechargeable battery information:**  
Lithium-ion Polymer 2100mAh 3.8V  
TMB - BP1803/19300

- The power adapter is intended to be correctly oriented in a vertical or floor mount position. The prongs are not designed to hold the plug in place if it is plugged into a ceiling, under-the-table or cabinet outlet.
- For pluggable equipment, the socket-outlet (power adapter) shall be installed near the equipment and shall be easily accessible.
- Unplug this product from the wall outlet before cleaning. Do not use liquid or aerosol cleaners. Use a damp cloth for cleaning.
- Do not cut off the power adapters to replace them with other plugs.
- Do not allow anything to rest on the power cords. Do not install this product where the cords may be walked on or crimped.
- This product should be operated only from the type of power source indicated on the marking label. If you are not sure of the type of power supply in your home, consult your dealer or local power company.
- The equipment is to be supplied from an identified USB port complying with the requirements of Limited Power Source.
- Do not overload wall outlets or use an extension cord.
- Do not place this product on an unstable table, shelf, stand or other unstable surfaces.
- This product should not be placed in any area where proper ventilation is not provided. Slots and openings in the back or bottom of this product are provided for ventilation. To protect them from overheating, these openings must not be blocked by placing the product on a soft surface such as a bed, sofa or rug. This product should never be placed near or over a radiator or heat register.
- Never push objects of any kind into this product through the slots because they may touch dangerous voltage points or create a short circuit. Never spill liquid of any kind on the product.
- To reduce the risk of electric shock, do not disassemble this product, but take it to an authorized service facility. Opening or removing parts of the product other than specified access doors may expose you to dangerous voltages or other risks. Incorrect reassembling can cause electric shock when the product is subsequently used.
- You should test the sound reception every time you turn on the units or move one of the components.
- Periodically examine all components for damage.
- There is a very low risk of privacy loss when using certain electronic devices, such as baby monitors, cordless telephones, etc. To protect your privacy, make sure the product has never been used before purchase, reset the baby monitor periodically by powering off and then powering on the units, and power off the baby monitor if you will not use it for some time.
- Children should be supervised to ensure that they do not play with the product.
- The small parts of this monitor can be swallowed by babies or small children. Keep these parts out of reach of children.
- The product is not intended for use by persons (including children) with reduced physical, sensory or mental capabilities, or lack of experience and knowledge, unless they have been given supervision or instruction concerning use of the appliance by a person responsible for their safety.

### SAVE THESE INSTRUCTIONS

- Use and store the product at a temperature between 32°F and 104°F.
- Burn hazard, fire hazard, explosion hazard associated with mishandling of the battery.
- Do not expose the product to extreme cold, heat or direct sunlight. Do not put the product close to a heating source.

**Warning—Strangulation Hazard—** Children have STRANGLED in cords. Keep this cord out of the reach of children (more than 3 ft (0.9m) away). Do not remove this tag.

- Never place the camera unit(s) inside the baby's cot or playpen. Never cover the camera unit(s) or parent unit with anything such as a towel or a blanket.
- Other electronic products may cause interference with your camera unit. Try installing your camera unit as far away from these electronic devices as possible: wireless routers, radios, cellular telephones, intercoms, room monitors, televisions, personal computers, kitchen appliances and cordless telephones.

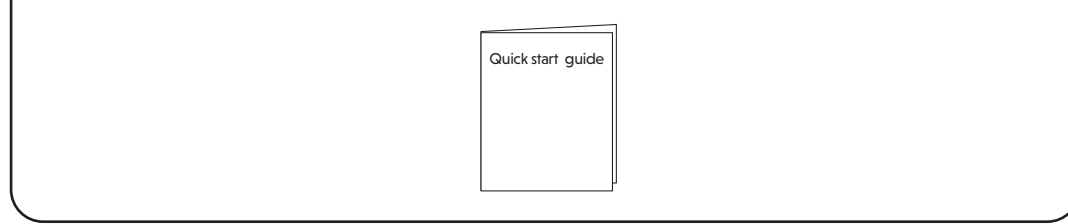
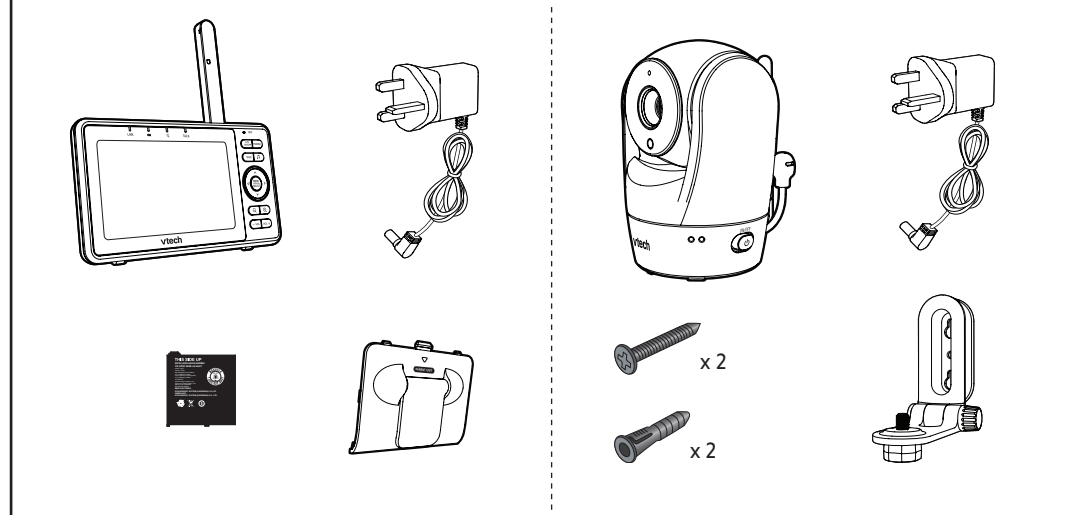
### Precautions for users of implanted cardiac pacemakers

Cardiac pacemakers (apples only to digital cordless devices): Wireless Technology Research, LLC (WTR), an independent research entity, led a multidisciplinary evaluation of the interference between portable wireless devices and implanted cardiac pacemakers. Supported by the U.S. Food and Drug Administration, WTR recommends to physicians that:

- Pacemaker patients**
    - Should keep wireless devices at least six inches from the pacemaker.
    - Should NOT place wireless devices directly over the pacemaker, such as in a breast pocket, when it is turned ON.
- WTR's evaluation did not identify any risk to bystanders with pacemakers from other persons using wireless devices.

## WHAT'S IN THE BOX

Your HD video monitor package contains the following items. Save your sales receipt and original packaging in the event warranty service is necessary.

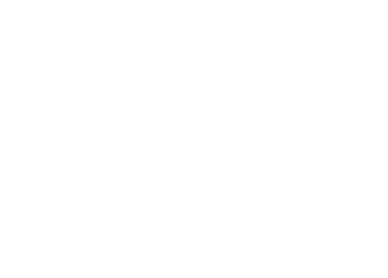
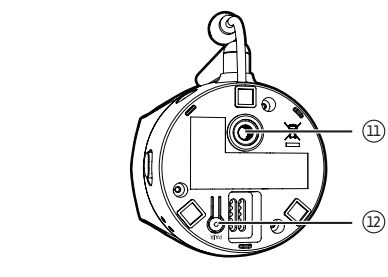
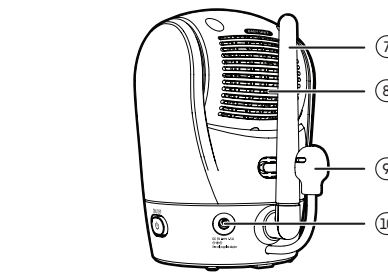
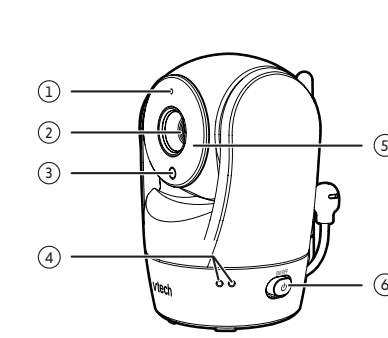


## Requirements

For mobile access:	
Network	Wi-Fi
Wi-Fi router	2.4GHz 802.11 b/g/n
Internet connection	1.5 Mbps @ 720p or 2.5 Mbps @1080p upload bandwidth per baby unit

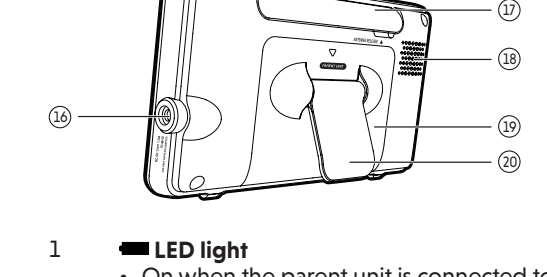
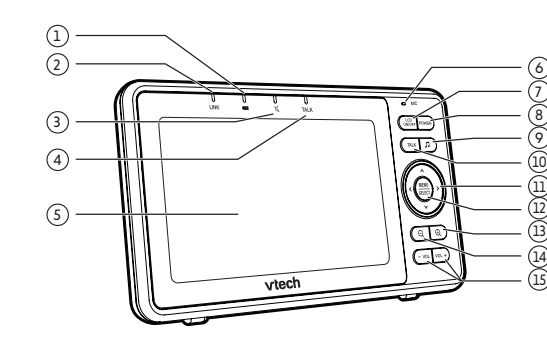
## OVERVIEW

### Baby unit overview



- Microphone**
- Camera lens**
- Light sensor**
- LED indicators**
  - Flash orange and green alternately when the baby unit is in pairing mode.
  - Orange is steady on when the baby unit is not connecting to the Internet and is idle.
  - Green is steady on when the baby unit is connecting to the Internet and is idle.
  - Flash orange slowly when the baby unit is not connecting to the Internet and is streaming with the parent unit.
  - Flash green slowly when the baby unit is connecting to the Internet and streaming with the parent unit or mobile app.
  - Flash orange and green quickly and alternately when the baby unit is updating its firmware.
- Infrared LEDs**  
Allow you to see clearly in a dark surrounding.
- ON/OFF switch**
- Antenna**  
Connect to router with Wi-Fi.
- Speaker**
- Temperature sensor**
- Power jack**
- Threaded socket**
- Pair/reset button**
  - Press and hold for three seconds to enter pairing mode.

### Parent unit overview



- LED light**
  - On when the parent unit is connected to AC power, or the battery is charging.
  - Flashes when the parent unit battery is low and needs charging.
  - Off when the parent unit is disconnected from AC power.
- LINK LED light**
  - On when the parent unit is linked to the baby unit.
  - Flashes when the link to the baby unit is lost.
- LED light**
  - On when the parent unit speaker volume is set to off.
  - On when the parent unit is talking to the baby unit.
- TALK LED light**
  - On when the parent unit is talking to the baby unit.
- LCD display**

- Microphone**
- LCD ON/OFF**
- POWER**
- Lullaby**
  - Press to enter the lullaby menu.
- TALK**
  - Press and hold to talk to the baby unit.
  - While in a submenu, press to exit.
- Arrow keys**
  - Left, Right, Up, or Down
  - Press to move the selection box leftward, upward, rightward or downward.
  - While viewing image from the baby unit, press and hold to pan the baby unit leftward, upward, rightward or downward.
  - While viewing zoomed image, press and hold to move the zoomed image leftward, upward, rightward or downward.
- MENU/SELECT**
  - Press to enter the menu.
  - While in a menu, press to choose an item, or save a setting.
- Zoom in**
- Zoom out**
- VOL/ VOL +**
- Power jack**
- Antenna**
- Speaker**
- Battery compartment cover**
- Stand**

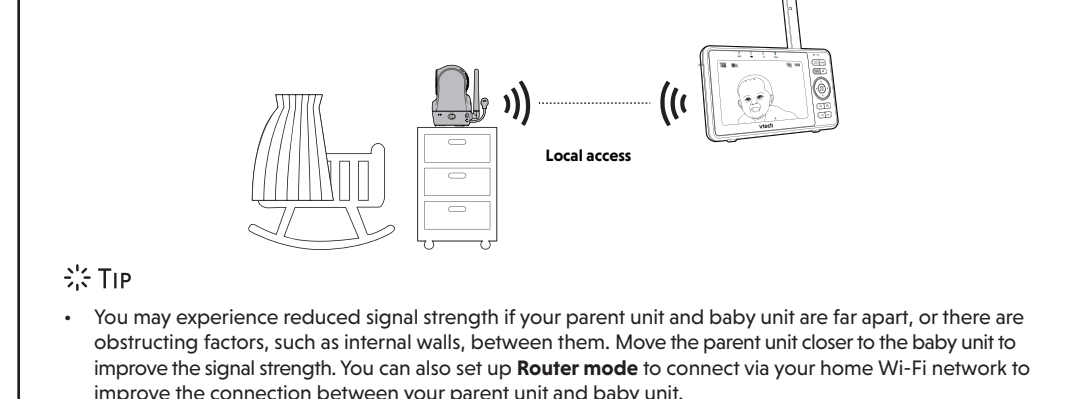
## What does HD Video Monitor do?

Vtech Wi-Fi HD Video Monitor allows you to stay close to your baby when you are on the move or away. This monitor is Wi-Fi enabled, which uses your home wireless network to stream live video and audio through the HD baby unit and 5-inch color screen parent unit. It allows you to maintain a constant connection to your baby.

You can also monitor from your smartphone and mobile tablet. Vtech Wi-Fi HD Video Monitor uses **MyVtech Baby 1080p** app to let you instantly see and hear what's happening with your baby from anywhere in the world. The app can be downloaded from the App Store or the Google Play™ Store, directly from your smartphone or mobile tablet.

## HOW THE SYSTEM WORKS

**Direct mode**  
The parent unit and the baby unit of your video monitor connect to each others in **Direct mode** by default, which allows you to stream live video right out of the box. **Direct mode** connection lets you stream live video from parent unit only.



**Router mode**  
You can continue using your video monitor with **Direct mode** connection, or you can set up your monitor in **Router mode** connection. **Router mode** uses your home Wi-Fi network to connect your video monitor. It supports streaming live video through parent unit and smartphone app. We recommend that you set up your monitor in **Router mode** to enjoy streaming live video via your parent unit with better connection.

If you want to stream live video remotely with your mobile device, download and install the **MyVtech Baby 1080p** mobile app. With the mobile app, your Wi-Fi router (not included) provides Internet connectivity to your HD video monitor system. It serves as a communicating channel between your baby unit and mobile device, allowing you to monitor and/or control your baby unit wherever you are. For detail, see **Download app for mobile access** section in this quick start guide.

- NOTES**
- Your parent unit detects the connection signal strength. If you have connected your video monitor with your Wi-Fi network, your parent unit automatically switches to direct or router mode - the one with stronger signal strength.
  - When both parent unit and app are viewing the camera simultaneously, the video quality will be optimised to deliver the best possible viewing result.

## PROTECT YOUR PRIVACY AND ONLINE SECURITY

Vtech cares about your privacy and peace of mind. That's why we've put together a list of industry-recommended best practices to help keep your wireless connection private and your devices protected when online. We recommend you carefully review and consider complying with the following tips.

Ensure your wireless connection is secure.

- Before installing a device, ensure your router's wireless signal is encrypted by selecting the "WPA2-PSK with AES" setting in your router's wireless security menu.

Change default settings.

- Change your wireless router's default wireless network name (SSID) to something unique.
- Change default passwords to unique, strong passwords. A strong password:
  - Is at least 10 characters long.
  - Is complex.
  - Does not contain dictionary words or personal information.
  - Contains a mix of uppercase letters, lowercase letters, special characters and numbers.

Keep your devices up to date.

- Download security patches from manufacturers as soon as they become available. This will ensure you always have the latest security updates.
- If the feature is available, enable automatic updates for future releases.

Disable Universal Plug and Play (UPnP) on your router.

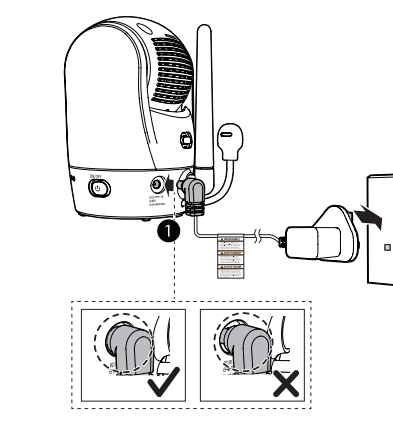
- UPnP enabled on a router can limit the effectiveness of your firewall by allowing other network devices to open inbound ports without any intervention or approval from you. A virus or other malware program could use this function to compromise security for the entire network.

- For more information on wireless connections and protecting your data, please review the following resources from industry experts:
- Federal Communications Commission: Wireless Connections and Bluetooth Security Tips - [www.fcc.gov/consumers/guides/how-protect-yourself-online](http://www.fcc.gov/consumers/guides/how-protect-yourself-online).
  - U.S. Department of Homeland Security: Before You Connect a New Computer to the Internet - [www.us-cert.gov/ncas/tips/ST15-003](http://www.us-cert.gov/ncas/tips/ST15-003).
  - Federal Trade Commission: Using IP Cameras Safely - <https://www.consumer.ftc.gov/articles/0382-using-ip-cameras-safely>.
  - Wi-Fi Alliance: Discover Wi-Fi Security - <http://www.wi-fi.org/discover-wi-fi/security>.

## CONNECT, CHARGE AND POWER ON THE BABY MONITOR

### Connect the baby monitor

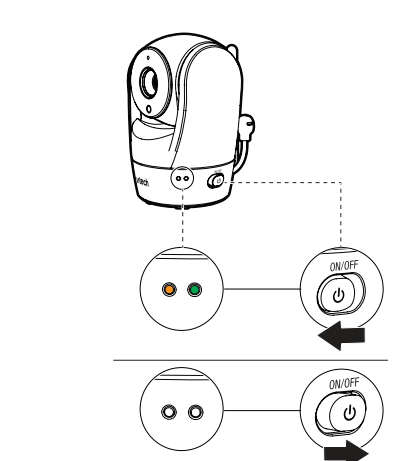
- NOTES**
- Use only the power adapters supplied with this product.
  - Make sure the parent unit and the baby unit are not connected to the switch controlled electric outlets.
  - Connect the power adapters in a vertical or floor mount position only. The adapters' prongs are not designed to hold the weight of the parent unit and the baby unit, so do not connect them to any ceiling, under-the-table, or cabinet outlets. Otherwise, the adapters may not properly connect to the outlets.
  - Make sure the parent unit, the baby unit and the power adapter cords are out of reach of children.
  - To maintain compliance with the FCC's RF exposure guidelines, place the baby unit at least 20cm from nearby persons.



### Connect and power on the baby unit

- Connect the power adapter to the baby unit and a power supply.
- Slide the **ON/OFF** switch leftward to power on your baby unit.

- NOTES**
- When powering up, the baby unit's status LED turns on. It will turn off after a while and keeps off.
  - The status LED is set to off by default. If you want to keep the LED on, press **MENU**, then go to **LED light** > **Status LED** and turn it on.



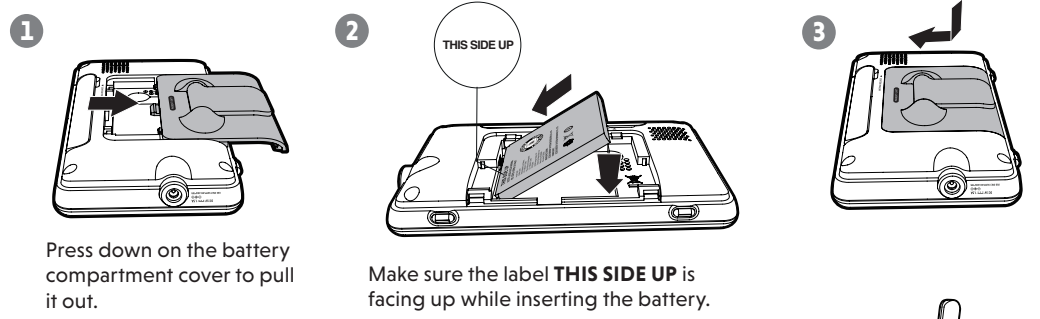
**NOTE:** Camera lens and surface may get warm during normal operation.

### Connect and charge the parent unit

#### Install the parent unit battery

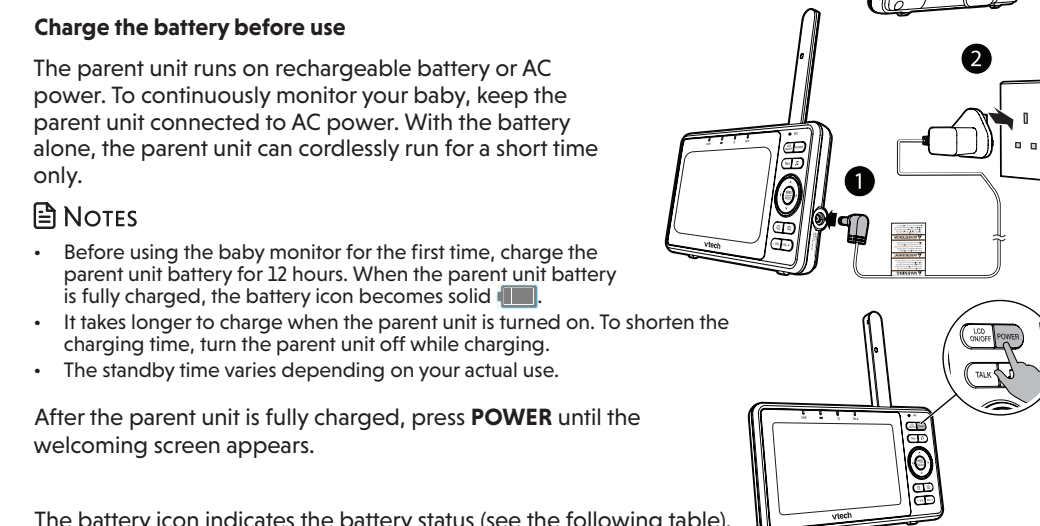
The parent unit runs on rechargeable battery or AC power. To continuously monitor your baby, keep the parent unit connected to AC power. With the battery alone, the parent unit can cordlessly run for a short time only.

- NOTES**
- Use only the battery supplied with this product.
  - If the parent unit will not be used for a long time, disconnect and remove the battery to prevent possible leakage.



**Replace the battery**  
To replace the battery, press down on the battery compartment cover and pull it out, then follow the steps above to install the battery.

**Raise the parent unit antenna for better reception**



**Charge the battery before use**  
The parent unit runs on rechargeable battery or AC power. To continuously monitor your baby, keep the parent unit connected to AC power. With the battery alone, the parent unit can cordlessly run for a short time only.

**NOTES**

- Before using the baby monitor for the first time, charge the parent unit battery for 12 hours. When the parent unit battery is fully charged, the battery icon becomes solid.
- It takes longer to charge when the parent unit is turned on. To shorten the charging time, turn the parent unit off while charging.
- The standby time varies depending on your actual use.

After the parent unit is fully charged, press **POWER** until the welcoming screen appears.

The battery icon indicates the battery status (see the following table).

BATTERY INDICATORS	BATTERY STATUS	ACTION
The screen displays  and  The  light flashes.	The battery has very little charge and may be used for only a short time.	Charge without interruption (about 30 minutes).
The battery icon becomes solid .	The battery is fully charged.	To keep the battery charged, connect it to AC power when not in use.

02/22/19 VM901-1W UK GSE, YA  
© 2021 Vtech Communications, Inc. All rights reserved.

Specifications are subject to change without notice.

---

IOS is a trademark or registered trademark of Cisco in the U.S. and other countries and is used under license.  
App Store is a trademark of Apple Inc., registered in the U.S. and other countries.  
Android™ and Google Play™ are trademarks of Google Inc.  
Nepier Court, Abingdon Science Park, Abingdon, Oxon, OX14 3YT, UK.  
Importer: Vtech Electronics Europe plc  
23/F., Tai Ping Industrial Centre, Block L, 57 Ting kok Road, Tai Po, Hong Kong.  
Manufacturer: Vtech Telecommunications Ltd.  
www.vtechbabycare.com

---

The Declaration of Conformity for the VM901-1W is available from the provisions of EU's Radio Equipment Directive (2014/53/EU) and UK's Radio Equipment Regulations 2017. This Video Monitor VM901-1W is in compliance with the essential requirements and other relevant Vtech Telecommunications Ltd. hereby declares that (2014/53/EU) and the UK's Radio Regulations 2017 on radio systems and radio communication equipment. This product complies with the essential requirements to EU's Radio Equipment Directive and UK. This product is intended for use within Europe and UK.

---

Help protect the environment by disposing of your product or batteries responsibly.  
The symbol indicates that the product was placed on the market after 13th August, 2005.  
The specified value of mercury (Hg), cadmium (Cd) or lead (Pb) set out in Battery Directive (2006/66/EC), indicating the environmental and human health damage that the battery contains more than the chemical symbols Hg, Cd or Pb, where marked, indicate that the battery contains more than the specified value of mercury (Hg), cadmium (Cd) or lead (Pb) set out in Battery Directive (2006/66/EC).  
The crossed-out wheeled bin symbol on products and batteries, or on their respective packaging, indicates that they must not be disposed of in domestic waste as they contain substances that can be damaging to the environment and human health.

---

## DECLARATION OF CONFORMITY

---

## DISPOSAL OF BATTERIES AND PRODUCT

---

Frequency: Baby unit: 2412 - 2462 MHz  
Channels: 13  
LCD: 5" Color LCD (1F5480XZ72 pixels)  
Nominal effective range: Actual operating range may vary according to environmental conditions at the time of use.

Power requirement: 1. Parent unit power adapter: Output: 5V DC 1A  
2. Parent unit Lithium-ion Polymer 3.8V: Output: 5V DC 1A



## PARENT UNIT ICONS

Main Menu	Options	Status icons
<b>Melodies and soothing sounds</b> <ul style="list-style-type: none"> <li>Select play all melodies, or play one of the five melodies and four soothing sounds.</li> <li>You can also set the timer to stop playing after 15, 30 or 60 minutes, or playing non-stop.</li> </ul>	<ul style="list-style-type: none"> <li>Direct mode Parent unit and baby unit are connected to each others directly.</li> <li>Router mode Parent unit and baby unit are connected to home Wi-Fi network.</li> </ul>	<ul style="list-style-type: none"> <li>Night vision is turned on.</li> <li>Motion alert is turned on.</li> <li>Sound detection alert is turned on.</li> <li>Melodies and soothing sounds are turned on.</li> <li>6-level sound indicator                             <ul style="list-style-type: none"> <li>Indicates low sound level detected by the baby unit.</li> <li>Indicates moderate sound level detected by the baby unit.</li> <li>Indicates high sound level detected by the baby unit.</li> </ul> </li> <li>Parent unit speaker is muted.</li> <li>Temperature alert is turned on.</li> </ul>
<b>Alerts - Sound, motion and temperature</b> <ul style="list-style-type: none"> <li>Select the sound and motion sensitivity level.</li> <li>Turn on/off sound and motion detection alerts.</li> <li>Select maximum and minimum temperature for alert range.</li> <li>Turn on/off temperature alert.</li> <li>Turn on/off <b>Auto Wake Up</b> function.</li> </ul>	<ul style="list-style-type: none"> <li>Adjust parent unit screen brightness.</li> <li>Turn on/off dim mode.</li> </ul>	
<b>Parent unit settings</b> <ul style="list-style-type: none"> <li>Turn on/off <b>Night Vision</b>.</li> <li>Turn on/off baby unit's status LED.</li> <li>Adjust baby unit's speaker volume.</li> <li>Update baby unit's security key.</li> </ul>		
<b>Baby unit settings</b> <ul style="list-style-type: none"> <li>Turn on/off <b>Night Vision</b>.</li> <li>Turn on/off baby unit's status LED.</li> <li>Adjust baby unit's speaker volume.</li> <li>Update baby unit's security key.</li> </ul>		
<b>General settings</b> <ul style="list-style-type: none"> <li>Connect to home Wi-Fi network.</li> <li>Turn on/off <b>Parent unit Wi-Fi Connection</b>.</li> <li>Connect mobile phone.</li> <li>Turn on/off <b>Low Battery Alert Tone</b>.</li> <li>Turn on/off <b>No Link Alert Tone</b>.</li> </ul>		

## BASIC OPERATION

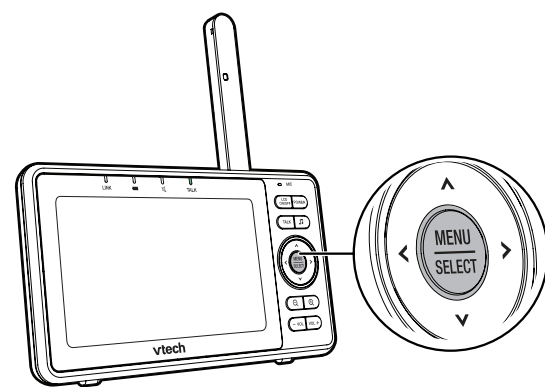
After powering up your video monitor, the parent unit streams live video in local mode. We recommend you follow the instructions on screen to set up home Wi-Fi network with your monitor for functionality enhancements and mobile access. See **Auto software and firmware update** and **Download app for mobile access** in this quick start guide.

### Use the menu

Press **MENU/SELECT** to enter the menu, choose a menu item, or save a setting. You can use the parent unit menu for advanced settings or operations, such as to play or stop the baby unit lullaby, or adjust the sound detection setting.

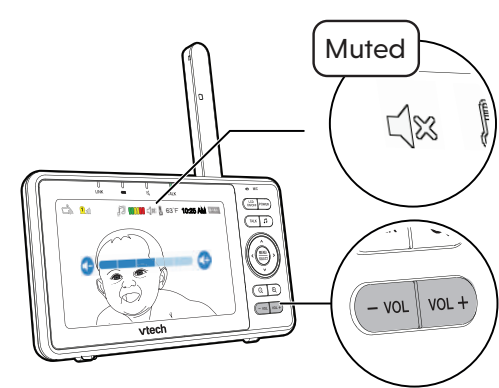
While in the menu:

- Press **▲**, **▼**, **◀** or **▶** to scroll among the menu options.
- Press **MENU/SELECT** to select an item.
- Press **TALK** to return to the live video.
- Press **Q** to go to **Help & Info** page.



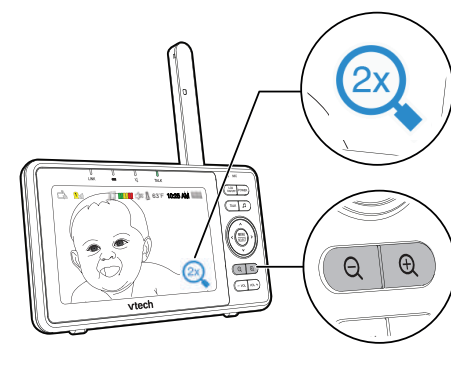
### Adjust speaker volume

Press **-VOL / VOL+** to adjust your parent unit speaker volume. It determines the volume of sound transmitted from your baby unit.



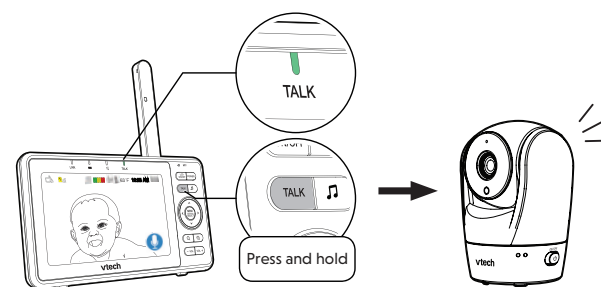
### Zoom

Press **Q** or **Q** to zoom in or out.



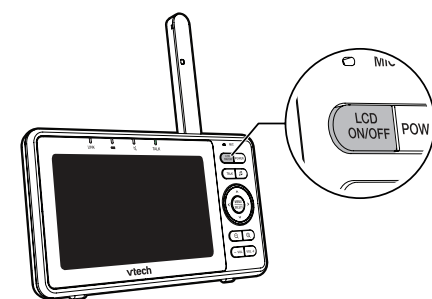
### Talk to your baby via the baby unit

- Press and hold the **TALK** key.
- When the **TALK** LED turns on, speak to your parent unit. Your voice is transmitted to the baby unit.
- When finish talking, release the **TALK** key.



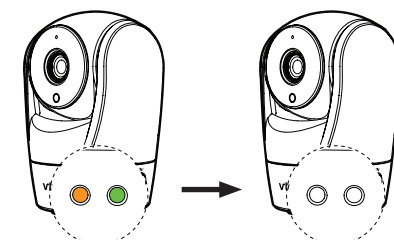
### Turn off the screen

Press **LCD ON/OFF** to switch off the screen. You can still hear sound from the baby unit.



### Turn on/off baby unit's status LED

You may set the status LED indicator of your baby unit on or off. Go to **Q > Status LED**.



## TEST THE SOUND LEVEL AND POSITION THE HD VIDEO MONITOR

### NOTE

- This HD video monitor is intended as an aid. It is not a substitute for proper adult supervision, and should not be used as such.

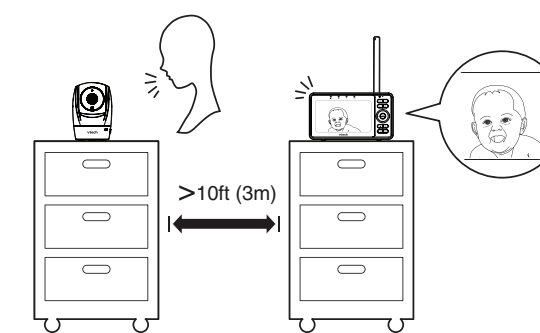
### Testing the sound level of the HD video monitor

#### CAUTION

- For hearing protection, make sure the parent unit is more than 3 metres away from the baby unit. If you hear any high-pitched noise from the parent unit, move the parent unit further until the noise stops. You can also press **-VOL** on the parent unit to lower or mute the noise.

#### TIP

- Increase the parent unit speaker volume if you cannot hear the sounds transmitted from the baby unit.

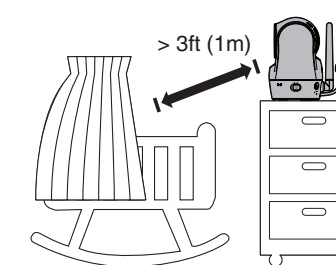


### Positioning the HD video monitor

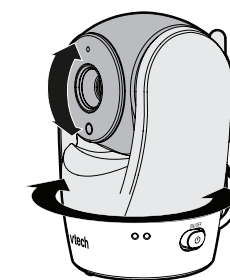
#### CAUTION

- Keep the baby unit out of the reach of your baby. Never place or mount the baby unit inside the baby's cot or playpen.

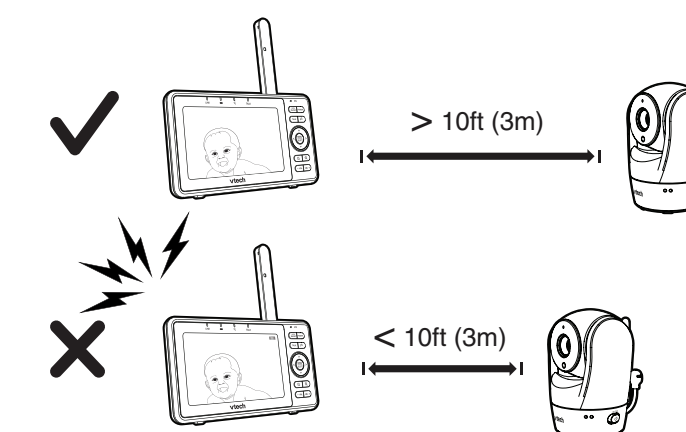
- Place the baby unit more than 1 metre away from your baby.



- Adjust the angle of the baby unit to aim at your baby. Refer to the online help on how to use the Pan/Tilt and Zoom functions of the baby unit.



- To avoid causing high-pitched screeching noise from your HD video monitor:
  - Make sure your baby unit and parent unit are more than 3 metres apart; OR
  - Turn down the volume of your parent unit.



## AUTO SOFTWARE AND FIRMWARE UPDATE

To ensure that your HD video monitor is always at its best performance, the parent unit will prompt a message and ask you to update its software and the baby unit's firmware when there are new versions available.

- Follow the instructions on the parent unit screen to update your HD video monitor. If you skip the updates, the parent unit and baby unit will be updated automatically when the parent unit is powered off, and then powered on again.

### Connect your HD video monitor with home Wi-Fi network

- You must connect your video monitor to your secured home Wi-Fi network in order to receive the latest software and firmware updates. To set it up, go to **Q > Configure Wi-Fi**.

**Q > Configure Wi-Fi**

## DOWNLOAD APP FOR MOBILE ACCESS

- You can download the free **MyVtech Baby 1080p** mobile app and install it to a mobile device, then use your mobile device and the mobile app to monitor your areas remotely.



- Press **MENU** when the parent unit is idle.

- Go to **Q > Connect Mobile Phone**.

- Scan the QR code in the parent unit to download the app into your mobile device.

- Follow the instructions in the mobile app to set up and pair your baby unit to the mobile app.

Alternatively, you can download the mobile app from the App Store or Google Play store.

### Install MyVtech Baby 1080p mobile app

- Browse the App Store or the Google Play store.
- Search for the mobile app with the keyword "myvtech baby 1080p".
- Download and install the **MyVtech Baby 1080p** mobile app to your mobile device.

### OR

Scan the QR codes on the right to get the app.



### NOTE

- Make sure your mobile device meets the minimum requirement for the mobile app.

### Minimum requirement

- The mobile app is compatible with:
- Android™ 5.0 or later; and
  - iOS 8.0 or later.

- After installing the mobile app, follow the instructions in the mobile app and parent unit to set up and pair your baby unit.

### In your mobile device:

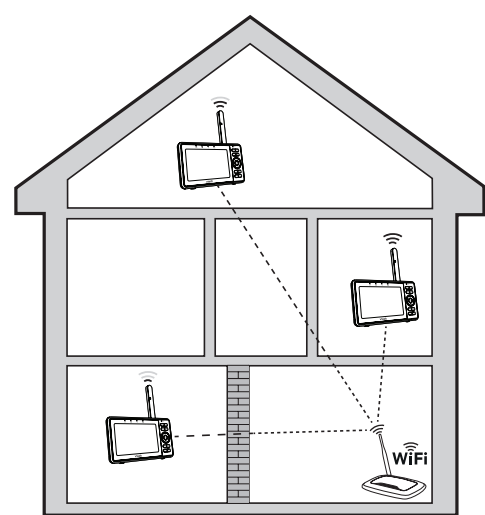
- Tap **+** to run the mobile app in your mobile device, and then create a camera account.
- We recommend that you use common webmail services, such as Google Gmail for registration of your camera account. Check your email (and Spam folder), and activate your new camera account via the email link, then sign in to your account.
- Follow the instructions in the mobile app to pair the camera. Tap **+** in the mobile app to get started.

## TEST THE LOCATION FOR THE BABY UNIT

If you plan to install your baby unit in a designated location, and use your home Wi-Fi network to connect your video monitor, you need to test which of your selected monitoring areas within the house have good Wi-Fi signal strength. After you have powered on your parent unit, you can use your parent unit's Wi-Fi signal strength indicator to assist in checking. Once you have identified the suitable location, you can install your baby unit. Adjust the distance between your baby unit and the Wi-Fi router if needed.

#### TIP

- Depending on surroundings and obstructing factors, such as the effect distance and internal walls have on signal strength, you may experience reduced Wi-Fi signal. To improve the Wi-Fi signal strength, adjust the distance or direction of your parent unit. Check with your parent unit again.



## NEED HELP?

Driven by system updates, the software, online help topics, and online FAQs will be updated periodically.

For operations and guides to help you using your HD video monitor, and for latest information and supports, go and check the online help topics and online FAQs.

Use your smartphone or mobile device to access our online help.

- Go to **www.vtechbabycare.com**. OR  
Scan the QR code on the right. Launch the camera app or QR code scanner app on your smartphone or tablet. Hold the device's camera up to the QR code and frame it. Tap the notification to trigger the redirection of the online help.

- If the QR code is not clearly displayed, adjust your camera's focus by moving your device closer or further away until it is clear.

- Search for the model - **VM901-1W**.  
If you would like to contact us, visit **www.vtechbabycare.com** or scan the QR code.



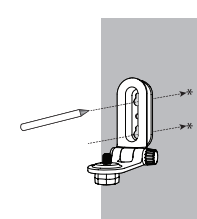
Online help and support

## MOUNT THE BABY UNIT (OPTIONAL)

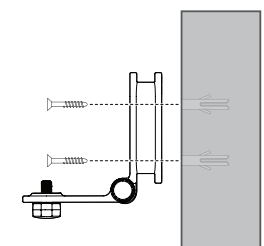
### NOTES

- Check for reception strength and baby unit's angle before drilling the holes.
- The types of screws and anchors you need depend on the composition of the wall. You may need to purchase the screws and anchors separately to mount your baby units.

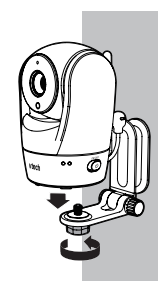
- Place the wall mount bracket on a wall and then use a pencil to mark the top and the bottom holes as shown. Remove the wall mount bracket and drill two holes in the wall (7/32 inch drill bit).



- Align the wall mount bracket and screws with the holes in the wall as shown. Tighten the screw in the middle hole first, so that the wall mount bracket position is fixed. You can tighten the other screw in the top hole.



- Place the baby unit on the wall mount bracket. Tighten the screw into the threaded socket at the bottom to secure the baby unit.



- You can maximize your baby unit's viewing angles by tilting the wall mount bracket. Hold the baby unit, and then rotate the knob in anticlockwise direction. This will loosen the joint of the wall mount bracket. Tilt your baby unit up or down to adjust to your preferred angle. Then, rotate the knob in clockwise direction to tighten the joint and secure the angle.

## GENERAL PRODUCT CARE

To keep this product working well and looking good, follow these guidelines:

- Avoid putting it near heating appliances and devices that generate electrical noise (for example, motors or fluorescent lamps).
- DO NOT expose it to direct sunlight or moisture.
- Avoid dropping the product or treating it roughly.
- Clean with a soft cloth.
- DO NOT immerse the parent unit and the baby unit in water and do not clean them under the tap.
- DO NOT use cleaning spray or liquid cleaners.
- Make sure the parent unit and the baby unit are dry before you connect them to the mains again.

## STORAGE

When you are not going to use the HD video monitor for some time, store the parent unit, the baby unit and the adapters in a cool and dry place.

## CUSTOMER SERVICE AND PRODUCT WARRANTY



### PRODUCT WARRANTY

Thank you for choosing this quality product from Vtech. We hope it will bring many hours of entertainment, imaginative play and learning.

- The product detailed above is covered by a one year warranty from the date of purchase, against any defects in materials or workmanship.
- The product may be returned to the place of purchase. Alternatively the product can be returned to Vtech Electronics Europe plc (see address below), with proof of purchase, without proof of purchase no replacement will be provided.
- Vtech Electronics Europe plc will examine the product and if it is found to be defective due to faulty materials or workmanship, will replace the product at their discretion.
- If the product covered by this warranty is damaged due to misuse, modification or unauthorised repair, or because of faulty batteries, battery discharge or incorrect electrical connections, then this warranty becomes void.
- This warranty is personal to the original purchaser and is not transferable.
- Breakages to the LCD screen are not covered by the warranty.
- Returns to Vtech Electronics Europe plc should include a cheque or postal order for £1.50 towards the cost of return postage and packaging.
- Products returned to Vtech Electronics Europe plc, should be addressed as follows and packed carefully to avoid damage in transit (Please do not include batteries or adaptor). Please include details of the fault together with your name and address.
- To keep an online record of your warranty, please register your product online at [www.vtech.co.uk/warranty](http://www.vtech.co.uk/warranty).

Vtech Electronics EU PLC, c/o XPO Logistics, Warehouse 350, Cat & Fiddle Lane, West Hallam, DE7 6HE

THIS WARRANTY IS OFFERED AS AN EXTRA BENEFIT AND DOES NOT AFFECT CONSUMERS' STATUTORY RIGHTS.

This warranty is valid for the UK and Eire only. For products purchased outside the UK and Eire, please contact your local distributor or place of purchase.

### IMPORTANT

Please retain this booklet with your sales receipt as proof of the date of purchase.

**Customer Service**  
Please call our Consumer Services Department on 03306 780149 (from UK) or +44 3306 780149 (outside UK) and a service representative will be happy to help you.