

serenelife⁸™



SLGT22

21.5" Dual Mode Graphic Tablet Monitor
Pro Drawing Pen Display Monitor with Capacitive
Touch Screen and Wireless Passive Pen

USER GUIDE

**In order for you to better understand and use your graphics tablet,
please be sure to read this manual carefully before use.**

CONTENTS

Precautions	3
Chapter 1 Product Introduction	4
Chapter 2 Accessories Description	5
Chapter 3 How the pen display is connected	6
Chapter 4 Driver Installation	7
Chapter 5 Pen display function settings	9
Chapter 6 Driver Uninstall	19
Chapter 7 Screen Adjustment	20
Chapter 8 Product Specifications	22
Chapter 9 FAQs	23

Precautions

- 1. Please read this manual carefully before using, and keep it well for future reference.**
2. Before cleaning the display please unplug the USB cable and wipe with a soft damp cloth, do not use any kind of detergents.
3. Please don't place the display near water sources such as bathtub, washbasin, sinks, washing machine, damp basement, swimming pool, etc.
4. Do not place the display on where is unstable or a height for children reaching easily in order to avoid danger.
5. Do not place the display and digital pen close to the magnetic field.
6. The grooves and holes on the back case is designed for ventilation to prevent the monitor from overheating. Please don't place the display on beds, sofas, carpets or in embedded device.
7. Only power supplies shown on the nameplate can be used for the display.
8. To protect your display, please switch off the power when it is not in use. During blackouts or not using for long time, please unplug the display from the socket.
9. Don't overload the socket or lengthen the power wire, which may lead to electric shocks.
10. Make sure no foreign bodies get inside the monitor through grooves and prevent liquid from splashing on the display as to prevent short-circuit or fire.
11. If the display has a breakdown, do not open the main case and try to repair it by yourself. Please ask for a service for proper repair and maintenance.
- 12. When the following situations occur, please unplug the power adapter and you may need a service for full repair and maintenance:**
 - A. The power wire or plug is damaged or worn out;
 - B. There is liquid splashed inside of the display;
 - C. The display has fallen or the LCD is broken;
 - D. When obvious abnormalities occur to the display.
13. While getting the components replaced, you are supposed to guarantee that the repairman is using the substitute components specified by the manufacturer. Unauthorized component replacement might cause fire, electric shocks or other dangers.

Chapter 1 Product Introduction

1. About the Product

This product doesn't only achieve paperless digital painting, but also the introduction of advanced electromagnetic induction technology, so as to bring you more convenient creation, painting experience. Users can connect it to a computer, directly with a pressure-sense pen on the pen on the pen display input and drawing operations, can be used in multimedia painting teaching and related fields.

2. What's in the Box

Before using this product, make sure that the accessories listed below are in the box.

- Wireless Charger Pen
- Charge Cable
- Pen Holder
- Clip (inside the pen holder)
- (8) Nibs (inside the pen holder)
- USB Cable
- HDMI Cable

If the above accessories are missing or damaged, please contact your point of purchase, if the problem can not be resolved, please contact the after-sales service center.

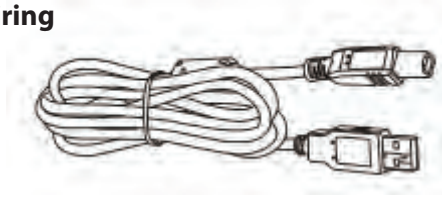
3. Product Diagram



4. Induction Area



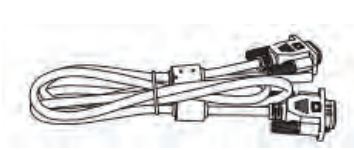
5. Wiring



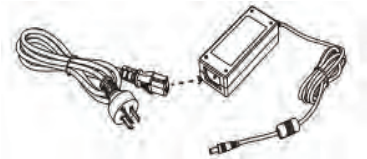
1 USB cable (USB A TO USB B)



1 HDMI cable



1 VGA cable



1 Power cord + Power Adapter

6. System Requirements

• Operating system:

PC: Windows XP/vista/7/8/10 (32/64bit);

Mac: Mac OS X 10.8 or above;

• Processor: Pentium 233MHz

• Memory: 64MB or more;

• Hard disk space: more than 128MB of free space;

• Interfaces: USB, HDMI, VGA, DVI interface.

Chapter 2 Accessories Description

1. Press Pen



2nd. key

1st. key

Nib

Note:

1. The first key, the second key by the user set the key function, please refer to the fifth chapter of this note section 1, section 3 key settings.
2. **DO NOT** disassemble and assemble the pressure pen in any form.
3. This pressure pen is an active pressure pen, it is recommended to charge it for 2 hours before use.

2. Core Replacement

- a. Open the pen barrel equipped with one end of the core;
- b. With the pen picker clamped the core gently pull out, remove the old core.
- c. By hand to remove the pen barrel inside the brand-new core;
- d. Put the core into the pen head, replace the new core.

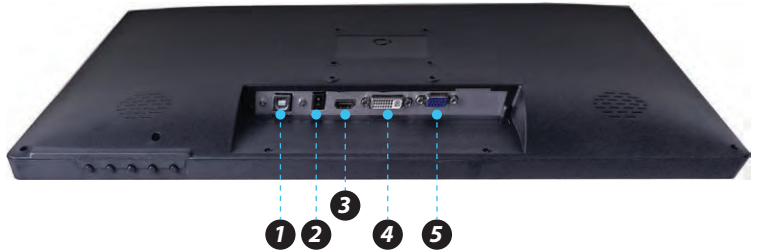
3. Double-click on the tip of the pen

Double-click the digital screen sensing area with a pressure-sensitive pen, the tip of the pen is equivalent to the left mouse button double-click function, the first touch of the tip of the pen after the shortest time to perform another tip touch.

Chapter 3 How the pen display is connected

Interface Diagram

1. USB connector
2. Power connector
3. HDMI interface
4. DVI interface
5. VGA interface



How to Connect

1. The USB cable is inserted into the digital screen and the computer corresponding USB interface;
2. To see if your computer has HDMI or VGA interface, if there are, preferred HDMI cable connected to pen display and computer. If there is only a VGA interface, select the VGA cable to connect to the pen display and computer.
3. One end of the power cord into the digital screen power interface, the other end connected to the power adapter, received to the power outlet, for the digital screen power supply.
4. The above ports are all connected, and make sure that there is no sign of loosening, turn on the pen display right power switch. When the screen lights up and syncs the computer screen or expansion screen, you are properly connected to the pen display to go to the drive installation step.

Note:


If you are using a desktop with a discrete graphics card installed, connect the HDMI plug to a discrete graphics card.

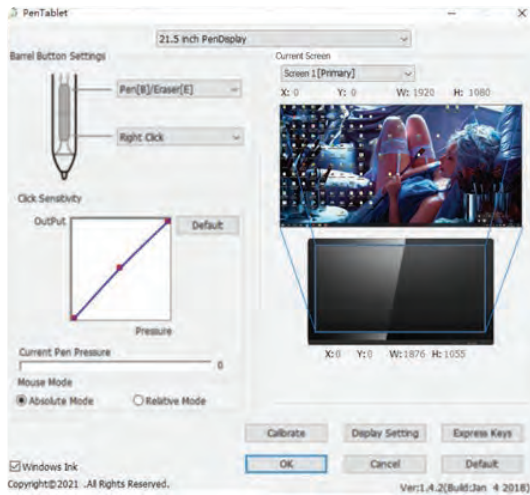
Chapter 4 Driver Installation

Precautions before installation

1. If your computer has installed another pen board or pen display driver, be sure to uninstall it and turn it back on.
2. Be sure to turn off the firewall, antivirus software, and related applications before installing.
3. Please connect the pen display to your computer correctly.
4. The installer places the disc in the CD, places the disc in the computer optical drive, double-clicks to open the disc, and runs the "**setup.exe**" or "**setup**" file for installation.

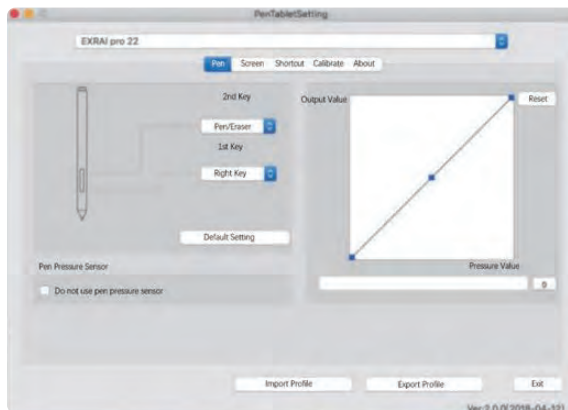
Windows Driver Installation

1. The installer places the disc in the CD, places the disc in the computer optical drive, double-clicks to open the disc, and runs the "**setup.exe**" or "**setup**" file for installation. Follow the steps to install until you're done, and then turn your computer back on.
2. After restarting the computer, if the computer in the lower right corner of the task column can see the digital screen driver small icon () , that means that the drive installation was successful.
3. After the successful installation of the driver, you can double-click the small pen screen icon, open the settings page, press the nib within the range of the driver panel, the applied force channel if relatively displayed on the pressure gauge of the current pressure, it means that the digital screen pressure function is normal at this time.
4. When the pen pressure test is normal, you can open the drawing software to start drawing.



MAC Driver Installation

1. The installer in the CD disc, put the disc into the computer optical drive, double-click to open the disc, run "**setup.exe**" or "**setup**" files for installation. Follow its prompt steps to install until it is complete and your computer is restarted.
2. After restarting the computer, [Finder] → [application] → [Pen Tablet] → [Pen Tablet Setting]. Open the driver settings interface, in the driver interface with a pen click, the pressure sensor progress bar will show the current pressure, pressure value according to the strength of the change, indicating that the pressure sense is normal.
3. When the pen pressure test is normal, you can open the painting software to start drawing.



Chapter 5 Pen display function settings

Setup guide under Windows system

The first step in setting up the pen display feature or diagnosing a problem with the pen display: **Open the pen display control panel.**

1. Turn on the pen display control panel

Tap the small digital screen icon in the lower right corner of the computer system taskbar with a press-inducing pen.

2. Control Panel Overview

The pen screen control panel is divided into nine area settings: pen settings, screen mapping, pressure adjustment, mouse mode, screen calibration, display settings, quick settings, restore defaults, import and export configurations.



I. Pen settings: Set the basic functions of the pen and pen keys custom function settings.

II. Screen mapping: Digital screen to screen mapping. By default, the entire active area of the digital screen is mapped to the entire display. If you use multiple displays, you can optionally map one or more displays.

- III. Pressure adjustment:** press the tip of the pen in the range of the drive panel, if the applied force is relatively displayed in the current pressure. The pressure gauge indicates that the digital screen pressure sensing function is normal.
- IV. Mouse mode:** change the working mode of the pen, only a few use environment may be used, if no special needs, please use Default absolute coordinate mode.
- V. Screen Calibration:** Click on this option to enter the screen calibration interface for adjusting the digital screen.
- VI. Screen Settings:** Click on this option to access the screen to adjust the color temperature, brightness and other display parameters interface.
- VII. Quick Settings:** Click on this option to enter Custom Settings for Adjusting Digital Screen Shortcuts.
- VIII. Restore default:** Click on this option to restore the default settings for the Digital Screen function.
- IX.** Click on this option to restore the default settings for the Digital Screen function.

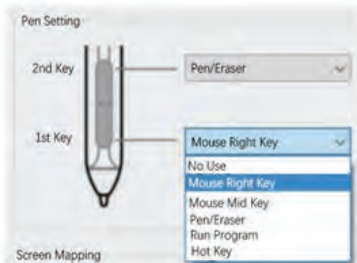
3. Pen Settings

Pen settings can set the pressure pen button function. The key function of the pressure pen is similar to the mouse button function, which can completely replace the mouse operation function.

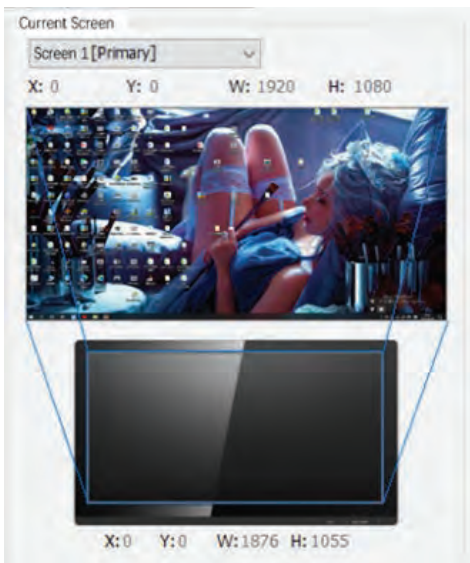
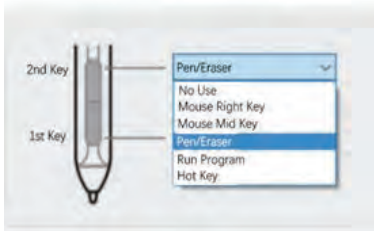
- I.** The first key and the second key can be set according to personal usage habits. Select the corresponding function in the drop-down box, you can make corresponding adjustments to the pen key function. After setting, press the key to execute the instructions.
- II. The tip of the pen corresponds to the function of the mouse:**
When the pen click on the digital screen, the default is the left mouse button click function.
- III. Use of pen/eraser function**
When the pen button is set to "pen/eraser" function, the pen button can be used to switch the pen/eraser mode. In the sensing area, press the pen button once to switch the digital screen from the current state of use to the eraser function, and then press the eraser function back to the previous tool.

4. Screen Mapping

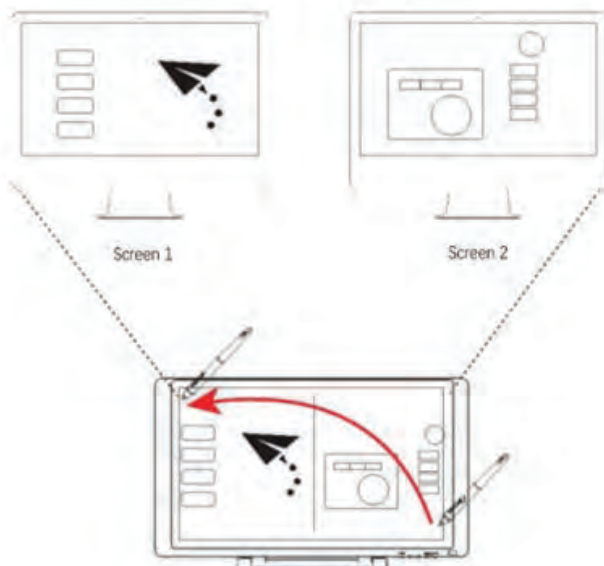
Screen mapping can set the size of the mapping area controlled by the digital screen.



Pic 5-1-3-1, The 1st Pen Key Setting

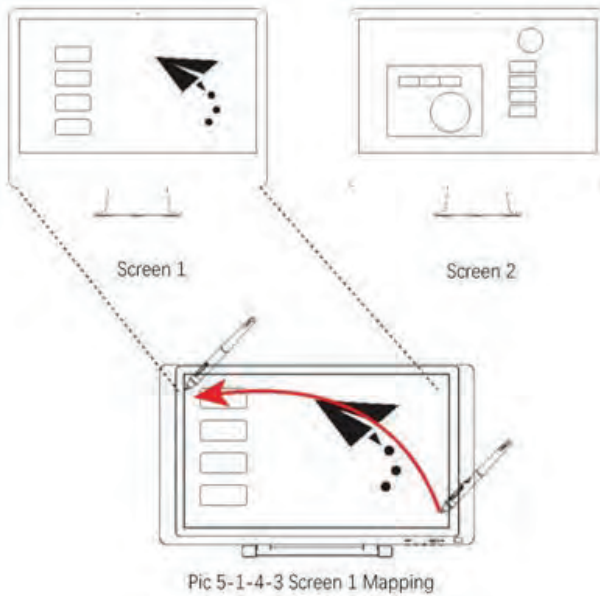


- I. By default, the digital screen sensing area is fully mapped to the entire display area. If you use multiple monitors, you can optionally map one or more displays.
- II. When using multiple monitors and in extended mode, select the All Screen option. **The mapping of digital screens will be extended to all displays as shown in the figure:**

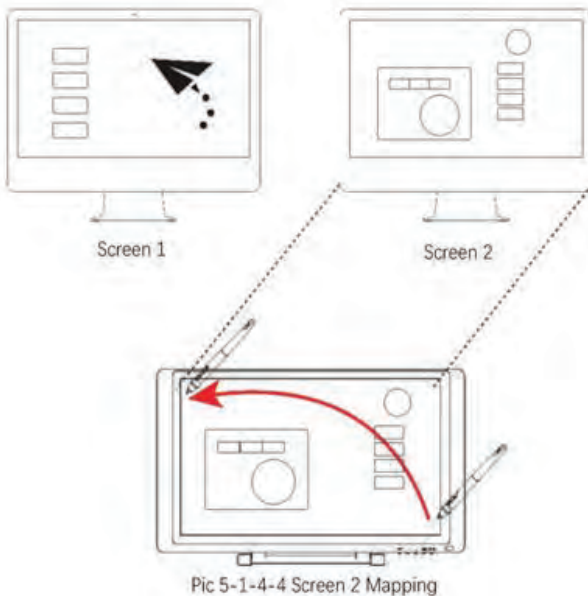


Pic 5-1-4-2 Screen Mapping

III. When screen mapping is switched to screen 1, the mapping of the digital screen will correspond only to screen 1 as shown in the figure.

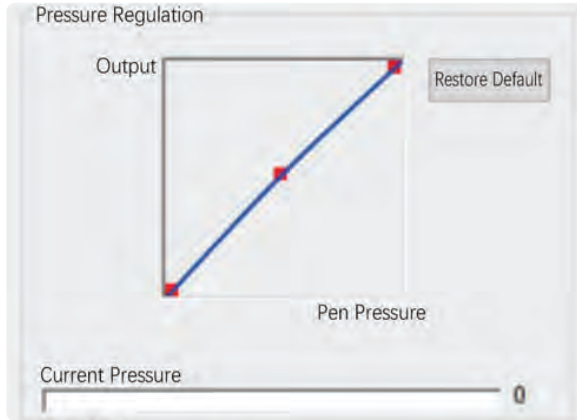


IV. When screen mapping is switched to screen 2, the mapping of the digital screen will correspond only to screen 2 as shown in the figure.



5. Pressure Regulate

Press the tip of the pen in the range of the drive panel, and if the applied force is relatively displayed on the current pressure gauge, the digital screen pressure sensing function is normal at this time.

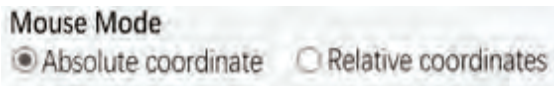


6. Mode Selection

I. Windows Ink: The digital screen supports Windows Vista/7/8/10 and other systems with Tablet PC ink writing function.



II. Mouse mode: The current option sets the use of Absolute Coordinates and Relative Coordinates modes.



Absolute Coordinates and Relative Coordinates: Different ways to position the screen cursor. Select Relative Coordinates to move the screen cursor by hovering the pen, similar to using the mouse. Select Absolute Coordinates, and the screen cursor will be positioned exactly according to the corresponding position of the pen and the pen screen. By default, the pen display uses absolute coordinates..

7. Screen calibration

This option can be used to adjust the offset options of the digital screen pressure pen.

Go to the Screen Calibration page and click on the red dot of the calibration page with a pressure-sense pen in accordance with your normal personal habit of holding the pen position to calibrate.

- 8. **Software Update:** In case of networking, when the server is updated, an update prompt for "detect a new version" appears at the bottom of the control panel interface. Click the blue arrow to enter the update interface, download the installation package according to the prompt to install until the update is complete.

Setup guidelines under MAC system

Turn on the pen display control panel

Open the Finder program, enter the Application- > [Pen Tablet] open [Pen Tablet Setting].



Set the options

Pen Tablet Setting interface is divided into five functional categories, including: Pen functions, screen settings, shortcut settings, calibration pages, version information



Pen Function

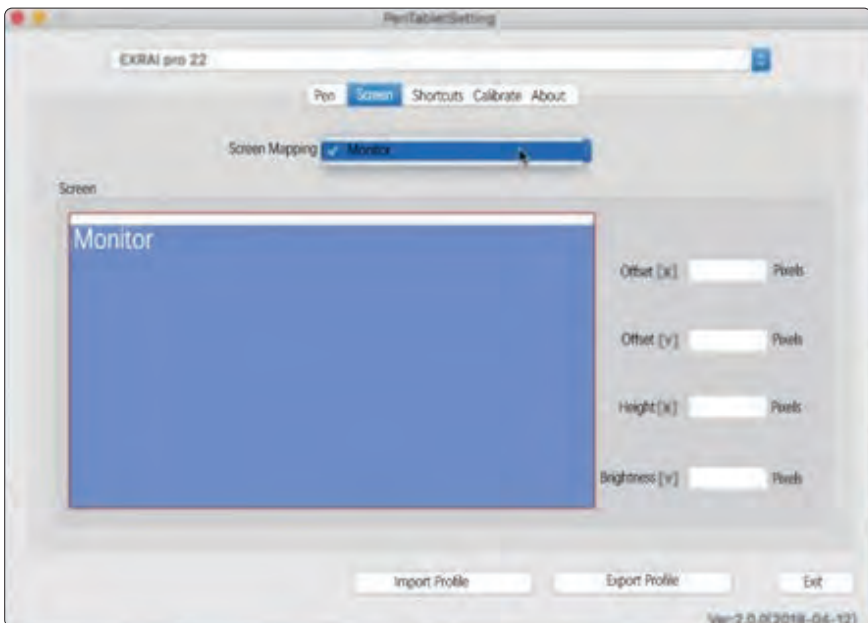
- Both the first key and the second key can be set according to personal usage habits. Select the corresponding function in the drop-down box to adjust the key function accordingly. Once set, press the pen button to execute the instructions.
- **The function of the nib corresponds to the function of the mouse:**
When the nib clicks on the pen screen, the default is the function of left mouse click.
- **Use of pen/eraser function**
When the pen button is set to "**pen/eraser**" function, the pen button can be used to switch the pen / eraser mode. In the sensing area, press the pen button once to switch the digital screen from the current state of use to the eraser function, and then press the eraser function back to the previous tool.

Screen Settings

Under this settings page, you can set the active area of the pen display. You can set up controls for the corresponding screen when using multiple screens.

a. Single-screen mode

Enter the appropriate coordinates of the screen in the right-hand box to control the active area of the pen display within the coordinates.





b. Dual-screen mode (more screens are also set below)

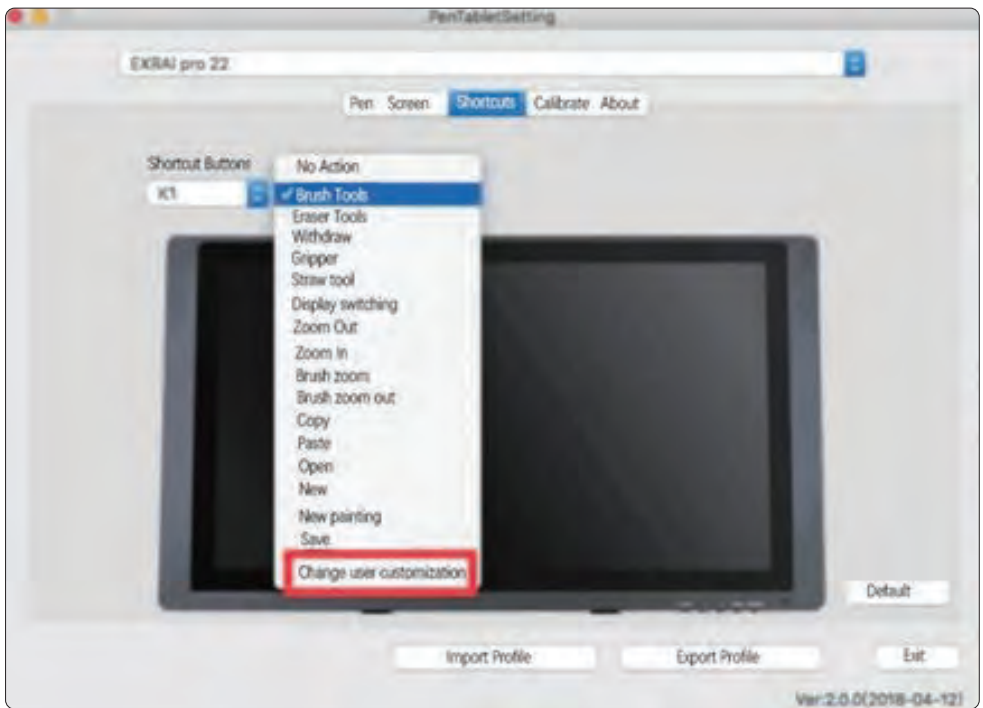
In dual-screen mode, you can click the drop-down box at the screen to select the corresponding screen that you need to control.

Shortcut Settings

Under this settings page, you can set up the hard shortcut function of the pen display. Key default features are commonly used shortcuts in drawing software, or you can customize the hot keys you need.

How to customize your settings:

- a. Select the key drop-down box and select the keys that need to be set.
- b. The drop-down box to the right of the key opens and chooses to change the consumer customization.

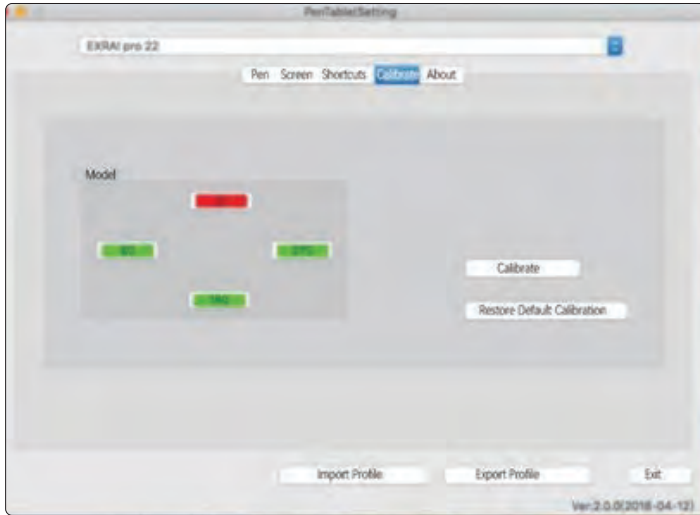


- c. In the pop-up settings interface, you can set up open applications, customize hotkeys, open web pages, and implement mouse functionality as needed.



Calibration Page

Under this settings page, digital screen calibration and screen rotation are available. The display can choose to rotate 0, 90, 180, 270 degrees, the default is 0 degrees do not rotate, select the rotation angle, the pen coordinates will also rotate.



Version Information

Digital Screen Driver Version Information.



Chapter 6 Driver Uninstall

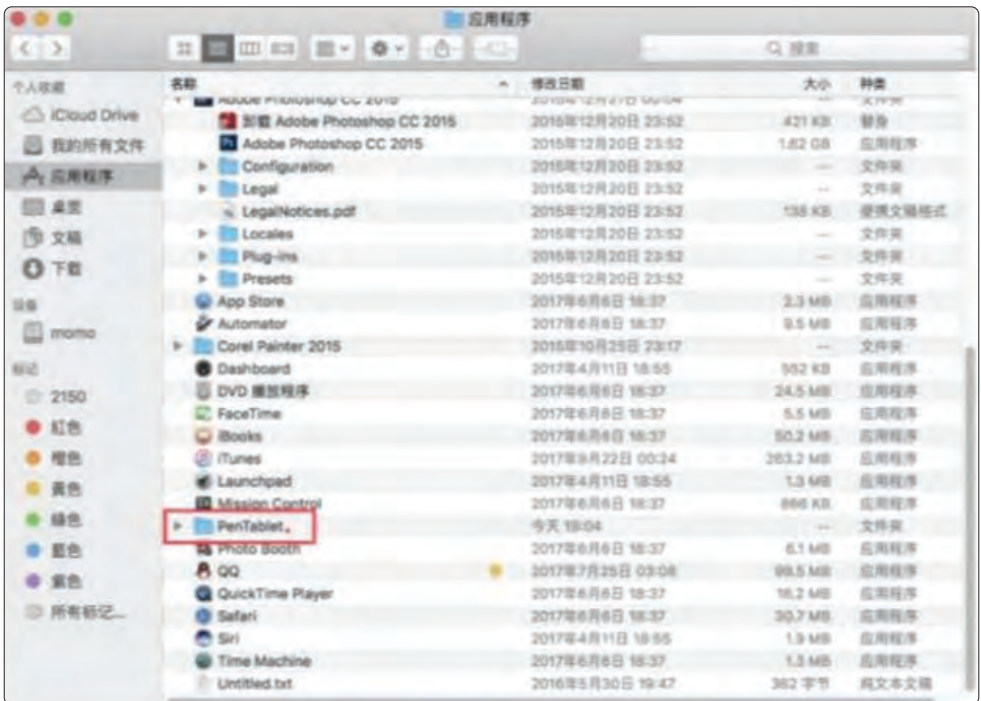
Windows System

There are three ways to uninstall:

1. Open the Start Menu → [program] → [Pen tablet] → [Uninstall Pen Tablet], follow the uninstall prompt until the uninstall program is complete.
2. Open the [Control Panel] → [Programs and Features] → [Add or remove programs] find “Pen Tablet” select [Change/Uninstall], follow the uninstall prompt until the program uninstalls.
3. Double-click the installer, then enter uninstall mode and wait for the program to uninstall until the uninstall program is over.

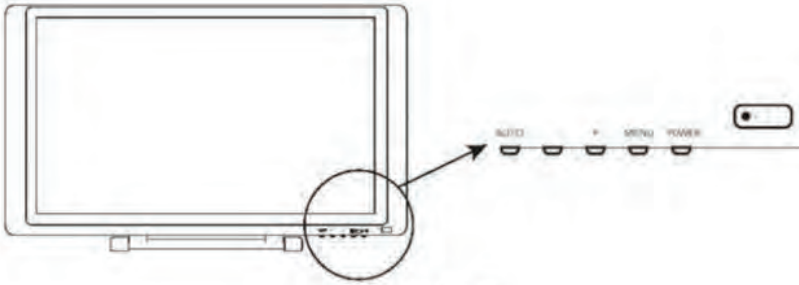
Mac System

1. Open [Finder] → [Application] → [Pen Tablet] → [Uninstall Pen Tablet].
Follow the uninstall prompt until the program unloads.



Chapter 7 Screen Adjustment

Menu Button



Digital Front Control Key and Features

1. POWER

Role one: Turn the pen display power on/off;

2. MENU

Role one: Pop-up screen adjustment menu;

Role two: Confirmation key of each setting;

3. "+"

Role one: Increase the brightness;

Role two: Right switch on the screen menu panel options and parameters;

4. "-"

Role one: Reduce the brightness;

Role two: Left switch on the screen menu panel options and parameters;

5. AUTO

Role one: Turn off the screen adjustment menu;

6. "LED light"

- When the light is green, the pen display is powered on;
- When the indicator is red, there is currently no signal input on the pen display;
- When the light is not on, the pen display is powered off.

Menu Description

The user can call up the pen display menu description page by clicking on the pen display "MENU" button.

PICTURE

Brightness: You can change the brightness of the picture by using the / button, and then press the "menu" key to save it.

Contrast: The / button can be manipulated to change the contrast of the screen, and then press the "menu" key to save.

Gamma: You can use the / button to turn it on or off, and then press "menu" to save it.

COLOR

Color Temperature: Used to adjust the temperature and coldness of the screen display, if you want to set the color temperature yourself You can adjust the RGB value after "User" and use the / button to adjust the value, and then press "menu" to save it.

Red: Percentage of red tone in color temperature adjustment, left/right / key to adjust the value, determine and press "menu" key is saved.

Green: Percentage of green tone in color temperature adjustment, / key to adjust the value, determine and press "menu" key is saved.

Blue: Percentage of blue tones in color temperature adjustment, left/right / key to adjust the value, after determining the "menu" key to save.

OSD

Horizontal: The / button can be manipulated to adjust the horizontal position of the menu in the display. Once you're sure, press "menu" to save.

Vertical: The / button can be manipulated to adjust the vertical position of the menu in the display, and then press the "menu" key to save.

Transparency: You can manipulate the left/right / button to adjust the transparency of the menu interface, and then press "menu" key is saved.

OSD Time Out: The / button can be manipulated to set how many seconds the menu displays and then closes automatically.

SETUP: MENU SETTINGS

Language: Enter language mode and use the left/right / button to switch between different language types.

Input: Enter the select able pen display to receive the signal and automatically switch to the connected video cable by default. The source to which it belongs.

DCR: Enters the contrast between the white and black brightness of the adjustable screen.

Display Size: Enter the adjustable screen display, which defaults to full-screen display.

Reset: This key resets the system menu data and presses the menu key to confirm.

Chapter 8 Product Specifications

Specification parameters of display screen


Specification parameters of display screen	
Appearance dimensions	527 × 323 × 30mm
Response area	467*273*11mm
Display size	21.5inches
Display screen	IPS display
Resolution ratio	1920*1080
Pigment figure	16.7M
Response time	18MS (Typ)
Pressure level	8192level
Reading speed	220Point/second
Read resolution	2540LPI
Response high	10mm
Induction accuracy	±0.5mm
interface type	USB、HDMI、VGA、DVI
support	adjustable extent: 10°-40°
Compatibility system	Windows10/8/7/Vista/XP(32/64bit) MAC OS X10.8or above
Specification parameters of Pressure Pen	
Pressure pen	P55A Pressure Pen
Induction mode	electromagnetic induction
Battery working hours	220 hours
USB cable	1m

Chapter 9 FAQs

Q1: *How do I update the latest version of the driver?*

Answer: Contact customer service for the latest version of the driver.

Q2: *How do I explain that the drive is installed?*

Answer: After the driver is installed correctly, insert the pen display and the computer taskbar will appear a small driver icon () , the pressure sensor pen can control the cursor normally when used on the digital screen, and the pressure sense is in the drive control panel pressure test.

Q3: *After the drive installation is complete, the small pen display icon does not appear in the computer taskbar, what should I do?*

Answer: At this point, you can connect the USB connector of the pen display to your computer, restart your computer, and let the driver complete the initial installation.

Q4: *Digital screen pressure pen can not be used properly, how to determine whether the failure is a hardware or software problem?*

Answer: When the pen display is not working properly, you can test it using the following methods:

Transfer the pen display to another computer for testing, without installing a driver, if the pen screen and pressure pen can be used on other computers like a mouse, indicating that the fault is caused by the driver, operating system, applications, etc.

Q5: *How does the pen display achieve painting creation?*

Answer: As a kind of computer input device, the pen display belongs to the hardware, not the drawing software. If you need to paint, you need to use the appropriate drawing software to achieve drawing creation, it is recommended that you purchase or network download and other ways to obtain the relevant drawing software.

serenelife™

Questions? Issues?

We are here to help!

Phone: (1) 718-535-1800

Email: support@pyleusa.com