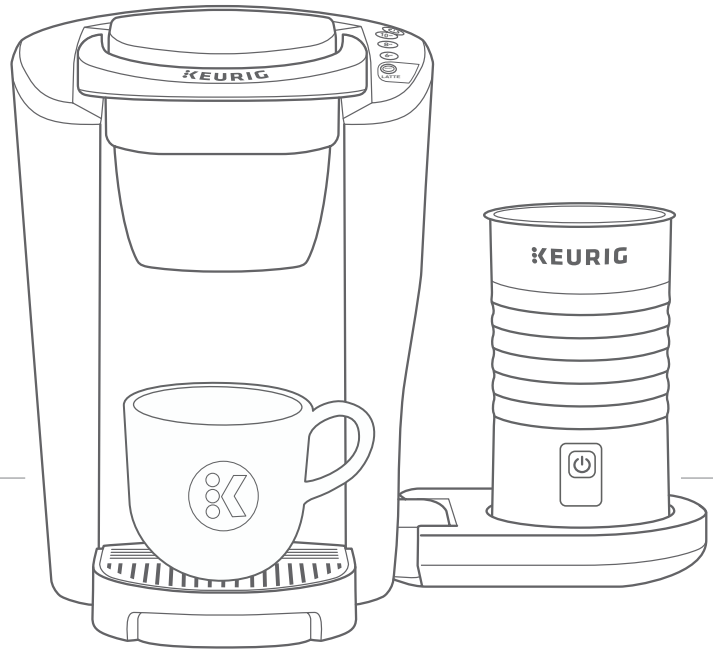


**KEURIG®**

# K•Latte™

## Use & Care Guide

Get the most from your  
new Keurig® brewer

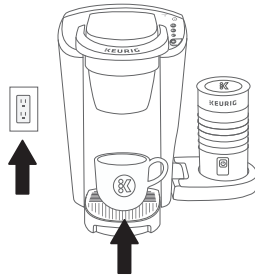


# Before You Brew

## 1 Plug & Place

Remove packing tape from brewer and frother, and plug into a grounded outlet. Lower the frother base on the side of the brewer.

Place a large mug (10oz minimum) on the drip tray.



## 3 Clean the Frother

Remove the lid and whisk from inside the frother. Wash the interior of the frother, lid, and whisk with warm, soapy water. Dry all parts thoroughly using a soft, non-abrasive cloth, then reassemble.

**NOTE:** Frother is not dishwasher safe. Do not submerge frother in water. Only use non-abrasive cleaning materials to prevent damage to the inner surface of the frother. Dry interior of frother and base with a soft cloth after cleaning.



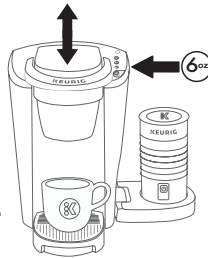
## 5 Cleansing Brew

Lift and lower the handle. **Do not insert a K-Cup® pod.** The three brew buttons and SHOT button will blink.

Press the 6oz button to start a cleansing brew. Pour the hot water into the sink.

**The one-time setup process is now complete and you are ready to brew!**

**NOTE:** Between brew cycles, the brewer may take about a minute to reheat.



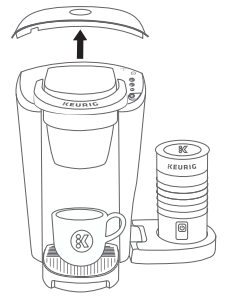
## 2 Rinse & Fill

Remove the water reservoir lid, then lift the reservoir straight up to remove it.

Rinse reservoir with fresh water and fill to the **MAX** fill line.

Replace water reservoir, making sure the lock tabs engage with the brewer. Replace lid.

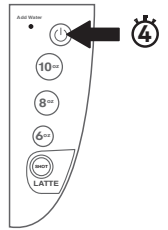
**NOTE:** Do not use distilled water.



## 4 Power On

Press power button - the green power light will illuminate.

The brewer will automatically begin heating the water. This will take about 4 minutes. Once the heating sound stops, the brewer is ready.



# Make Your First Latte

## 1 Fill Frother

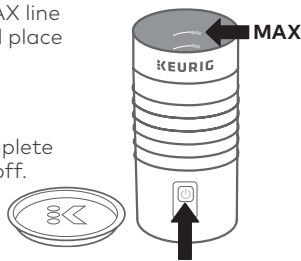
Remove lid and add chilled milk to the MAX line marked in the frother. Replace the lid and place the frother on the frother base.

Press the power button on the frother. The button will illuminate while heating – approximately 3 minutes. Frothing is complete when the button flashes and then turns off.

**TIP:** Having trouble frothing? We're here to help. Give us a call at 1-866-901-BREW (2739).

**CAUTION:** Frother is not microwave or dishwasher safe.

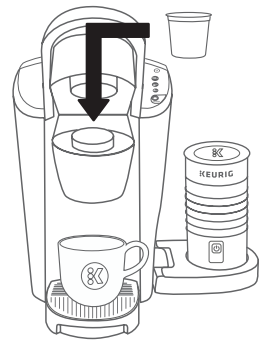
**NOTE:** Do not under or overfill frother. Do not operate before adding milk.



## 2 Place Mug & Pod

Place a mug on the drip tray. Lift the handle and place any K-Cup® pod in the K-Cup® pod holder. Lower the handle completely to close the lid.

**Do not remove the foil lid on the K-Cup® pod.**

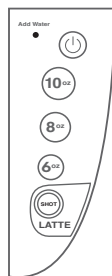


## 3 Brew a Shot

The three brew buttons and SHOT button will blink. Press the **SHOT** button. Brewing is complete when the SHOT button is no longer illuminated. Lift the handle and dispose of the used K-Cup® pod.

**NOTE:** After 60 seconds, the brew buttons will be disabled. To re-activate, lift and lower the handle completely.

**CAUTION:** While brewing, there is extremely hot water in the K-Cup® pod holder. To avoid injury, do not lift the handle during the brewing process.



## 4 Create Your Latte

Remove the frother from the base. Remove the lid and pour the frothed milk over your shot of coffee.

**NOTE:** Clean frother immediately after use. For cleaning instructions, see Caring for your Brewer section in this guide.



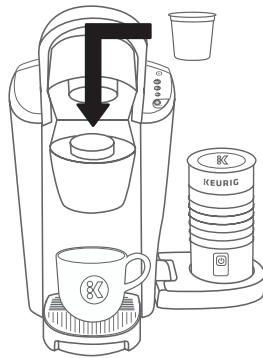
# Brew Your First Coffee

## 1 Place Mug & Pod

Place a mug on the drip tray plate. If using a travel mug, remove the drip tray and place the mug on the drip tray base. Lift the handle and place a K-Cup® pod in the K-Cup® pod holder. Lower the handle completely to close the lid.

**Do not remove the foil lid on the K-Cup® pod.**

**High Altitude Brewing:** While holding the brewer handle up, push down slowly on the K-Cup® pod in the pod holder until the bottom of the K-Cup® pod is punctured by the exit needle.



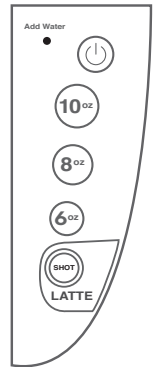
## 2 Brew & Enjoy!

Select your brew size. The button will remain illuminated while brewing — about 1 minute. Brewing is complete when the button is no longer illuminated. Lift the handle and dispose of the used K-Cup® pod.

The brewer will be ready to brew another cup in about a minute.

**NOTE:** After 60 seconds, the brew buttons will be disabled. To re-activate, lift and lower the handle completely.

**CAUTION:** While brewing, there is extremely hot water in the K-Cup® pod holder. To avoid injury, do not lift the handle during the brewing process.



## Brewer Features

**Frother** froths milk to create your favorite latte.

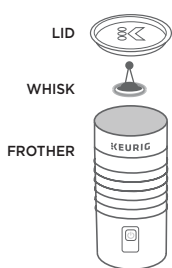
**SHOT** button brews a shot of coffee to make delicious, creamy lattes.

**Auto Off** automatically turns your brewer off 2 hours after the last brew for energy savings.

**Smart Start** heats then brews in one simple process. No need to wait for the brewer to heat before selecting brew size. Power on your brewer, place mug, insert a K-Cup® pod, and lower the handle. Then, select your brew size. The brewer will heat, then automatically begin brewing.

## Caring For Your Brewer

Regular cleaning keeps your brewer running smoothly. Always be sure to turn off and unplug your brewer before cleaning.



### Frother

Clean immediately after each use and before first use.

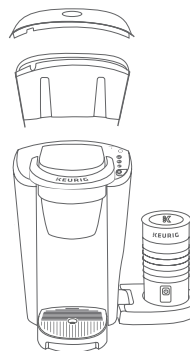
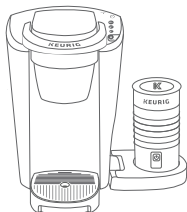
#### To Clean:

1. Remove frother from the base, remove silicone ring from lid, and remove the whisk from inside the frother.
2. Wash the silicone ring, lid, and whisk with warm, soapy water.
3. Clean the interior of the frother with soap and rinse with warm water. Use a soft, non-abrasive cloth or sponge to prevent damaging the inner coating.
4. Wipe the exterior with a soft, damp cloth.
5. Dry all parts thoroughly and reassemble for next use.

**NOTE:** Frother is not dishwasher safe. Do not submerge frother in water. Only use non-abrasive cleaning materials to prevent damage to the inner surface of the frother.

### Brewer Exterior

Keep your Keurig® brewer looking its best by cleaning the exterior from time to time. Just clean with a damp, soapy, lint-free, non-abrasive cloth. Never immerse the brewer in water or other liquids.



### Water Reservoir & Reservoir Lid

The water reservoir lid and water reservoir should be cleaned periodically. Clean in a dishwasher (top rack only) or hand wash. To hand wash, use a damp, soapy, non-abrasive cloth. Rinse the reservoir thoroughly after cleaning. This will ensure that no cleaning solutions remain in the area as they may contaminate the water supply. After rinsing, fill the reservoir with clean water and return it to the brewer. Do not dry the inside of the water reservoir with a cloth as lint may remain. If needed, repeat above procedures.

**NOTE:** If you are using a water filter inside the water reservoir, remove it before cleaning.

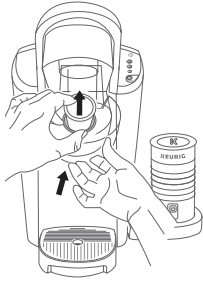
### Drip Tray

The drip tray can hold up to 8 ounces of overflow and should be emptied and cleaned occasionally. To remove, slide it toward you, keeping it level to avoid spilling. Clean in dishwasher (top rack only) or rinse and clean with a damp, soapy, lint-free, non-abrasive cloth.



# Caring For Your Brewer (Continued)

## K-Cup® Pod Holder

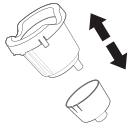


To remove the K-Cup® pod holder from the brewer, lift the handle and grasp the top of the K-Cup® pod holder with one hand while pushing up on the bottom of the K-Cup® pod holder from underneath with the other until it releases. After cleaning, align the K-Cup® pod holder with the opening using the two front ribs as a guide and snap into place from the top.

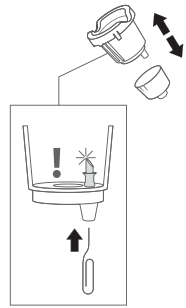
**CAUTION:** There are sharp needles that puncture the K-Cup® pod above the K-Cup® pod holder and in the bottom of the K-Cup® pod holder. To avoid risk of injury, do not put your fingers in the K-Cup® pod holder.

**NOTE:** Always remove and dispose of the used K-Cup® pod after brewing.

## Funnel



Washing the funnel ensures a fresh beverage experience. The funnel should be washed regularly and can be removed from the K-Cup® pod holder by pulling on it until it pops off. To replace it, orient the snaps to the indent and just snap it back onto the K-Cup® pod holder.



## Exit Needle

Remove the pod holder assembly and detach the funnel. Locate the exit needle on the inside bottom of the K-Cup® pod holder. Insert a straightened paper clip into the exit needle to loosen any coffee grounds.

## Entrance Needle

Lift the brewer handle and locate the entrance needle on the underside of the lid. To clean both holes in the needle, hold the brewer handle in the upward position and with your other hand, carefully insert a straightened paper clip into both holes. Gently move it around to loosen any coffee grounds. Lower the handle completely and run two water-only brew cycles. Do not insert a K-Cup® pod.

**TIP:** Refer to [support.keurig.com](http://support.keurig.com) for video instructions on cleaning the entrance/exit needles.

# Descaling Your Brewer

You should descale your brewer every 3-6 months. Properly follow the descaling procedure.

Depending on the mineral content of your water, calcium deposits or scale may build up in your brewer. Scale is non-toxic but if left unattended can hinder brewer performance. Regularly descaling your brewer every 3-6 months helps maintain the heating element, and other internal parts that come in contact with water. Calcium deposits may build up faster, making it necessary to descale more often.

## Descaling Procedure

Before you begin, you will need a large ceramic mug, fresh water, Keurig® Descaling Solution, and access to a sink. Do not use a paper cup. Ensure that there is no beverage pod in the K-Cup® pod holder. Please allow approximately 45 minutes for the descaling procedure.

Empty the water from the water reservoir. If using a Keurig® Water Filter, remove and set aside.

### STEP 1: Cleansing Rinse

Press the power button to power the brewer off.

Pour the entire bottle of Keurig® Descaling Solution into an emptied water reservoir. Then fill the empty bottle with water and pour into the water reservoir. Press the power button to turn the brewer back on.

Place a large mug on the drip tray and run a rinsing brew by lifting and lowering the handle and selecting the largest brew size.

### STEP 2: Internal Tank Soak

Repeat the rinsing brew process until the add water light is illuminated. Do not use a K-Cup® pod. Let brewer stand for at least 30 minutes while still on.

After 30 minutes, discard any residual solution from the water reservoir and rinse thoroughly.

### STEP 3: Fresh Water Rinse

Fill the water reservoir with fresh water to and not beyond the MAX fill line.

Place a large mug on the drip tray plate and run a rinsing brew using the largest brew size. Do not use a K-Cup® pod. Pour the contents of the mug into the sink.

Repeat brew process until you have completed at least 12 rinsing brews using the largest brew size. You may need to refill the water reservoir at least one time during this process.

**NOTE:** The cleaning action of Keurig® Descaling Solution may result in a "foam" dispensed from the brewer. This is natural, as the solution is reacting with the scale inside. For a brewer that is heavily scaled, the brewer may not fill properly after the descaler is added. If this occurs, you may see only a small or no output dispensed, followed by the sound of air blowing out. If this occurs:

- Turn off and unplug the brewer.
- If there is Keurig® Descaling Solution in the water reservoir, discard the contents, rinse the water reservoir thoroughly and refill with water.
- Plug the brewer back in, power on, and repeat the Step 3 Fresh Water Rinse cycle. The brewer should begin to function normally as the solution is rinsed out and the scale is removed. If problem persists, allow brewer to sit unplugged for at least 30 minutes before continuing with the rinse.

# Troubleshooting

## Frother

- If the milk you are using isn't frothing, please call Customer Service.
- If you are brewing coffee, you may not be able to use the frother at the same time. If you press the button on the frother and the light won't illuminate, wait 30 seconds after the brewer has finished brewing. Press the button on the frother again and the light will illuminate. If you still cannot use the frother, contact Customer Service.

## Grounds in Your Coffee

- Grounds may have gathered in the exit or entrance needles and can be cleaned using a straightened paper clip or similar tool.
- Clean the exit needle of the K-Cup® pod holder. Refer to the Exit Needle care instructions.
- Clean the brewer entrance needle. Refer to the Entrance Needle care instructions.

## Brewer Will Not Brew

- After placing the K-Cup® pod in the K-Cup® pod holder, make sure that the handle is pushed down securely and the brew buttons are flashing.
- If the add water light is illuminated, add water to water reservoir. Fill to and not beyond the MAX fill line. Make sure the water reservoir is seated properly in its base. If the add water light continues to be illuminated even after refilling, contact Customer Service.
- If the small cup, small mug, large mug, and SHOT button lights are all on simultaneously, lift handle and remove K-Cup® pod (if present in the brewer). Close handle and place a large mug

on the drip tray. Press the power button once. The brewer may dispense hot water.

- If the small cup, small mug, large mug, and SHOT button lights all blink simultaneously, contact Customer Service.
- If frother is in use, you may not be able to brew coffee at the same time. If this happens, wait 30 seconds after the frother has finished frothing then try brewing again. If you still cannot brew, contact Customer Service.

## Brewing a Partial Cup

- The exit needle may be clogged. Refer to the Exit Needle care instructions.
- The water reservoir may have been removed during brewing. Replace the water reservoir and perform a rinsing brew without a K-Cup® pod.
- The brewer may need to be descaled. If you have repeated the descale procedure on your brewer two times and it is still only brewing a partial cup, contact Customer Service.

## Brewer Does Not Have Power or Shuts Off

- Make sure that the power button has been turned on.
- Plug brewer into its own grounded outlet. If the electric circuit is overloaded with other appliances, your brewer may not function properly. The brewer should be operated on its own circuit, separate from other appliances.
- For energy savings, the brewer automatically turns off 2 hours after the last brew. Press the power button and the green power light will illuminate.
- If the brewer still doesn't have power, contact Customer Service.

## Helpful Hints

Water quality varies greatly. If you notice an undesirable taste in your beverage (such as chlorine or mineral tastes), we recommend using bottled or filtered water. Do not use distilled water. You can also install a Keurig® Water Filter to help remove water impurities and improve beverage taste.

## Service

Beyond these recommended cleaning and maintenance procedures, this brewer is not user serviceable. For service, please refer to the Warranty section of this guide.

## Storage

Empty the water reservoir before storing or transporting and take care to ensure that you store your brewer in a safe and frost free environment. Please be sure to store your brewer in its upright position to avoid water leakage from the inner tank. If you store the brewer in a cold environment, you run the risk of water freezing inside the brewer and causing damage. When you prepare to use it after storage, we recommend cleaning the water reservoir with soap and fresh water and descaling the brewer as detailed in the section above.

If you plan to move your brewer to a different location, turn the brewer off, unplug it, and empty the water reservoir. If your brewer has been in an environment below freezing, please be sure to let it warm to room temperature for at least 2 hours before using.

## Click or Call!

### Have Questions?

We're here to help. Visit [support.keurig.com](https://support.keurig.com) for step-by-step videos on cleaning, descaling, and more.



### Still Need Help?

Give us a call at  
**1-866-901-BREW (2739)**

# Warranty

## LIMITED ONE YEAR WARRANTY

Keurig Green Mountain, Inc. (Keurig) warrants that your brewer will be free of defects in materials or workmanship under normal home use for one year from the date of purchase. It is recommended that you register your brewer on [keurig.com/new](http://keurig.com/new) so that your purchase information will be stored in our system. Keurig will, at its option, repair or replace a defective brewer without charge upon its receipt of proof of the date of purchase. If a replacement brewer is necessary to service this warranty, the replacement brewer may be new or reconditioned. If a replacement brewer is sent, a new limited one year warranty will be applied to the replacement brewer.

This warranty only applies to brewers operated in the United States and Canada. This warranty gives you specific legal rights, and you may also have other rights that vary from state to state and, in the case of Canada, from province to province.

Only the use of Keurig® K-Cup® brand pods and accessories will guarantee the proper functioning and lifetime of your Keurig® brewer. Any damage to or malfunction of your brewer resulting from the use of non-Keurig® pods and accessories may not be covered by this warranty or may result in a service fee if the damage or malfunction is determined to be caused by such use.

**NOTE:** FROTHER IS NOT INTENDED TO BE CLEANED IN A DISHWASHING MACHINE. WATER OR OTHER DAMAGE TO FROTHER SUSTAINED IN CLEANING OF FROTHER IS NOT COVERED BY THIS WARRANTY.

## WHAT IS NOT COVERED BY THE LIMITED WARRANTY?

THIS WARRANTY DOES NOT COVER CONSEQUENTIAL OR INCIDENTAL DAMAGES SUCH AS PROPERTY DAMAGE AND DOES NOT COVER INCIDENTAL COSTS AND EXPENSES RESULTING FROM ANY BREACH OF THIS WARRANTY, EVEN IF FORESEEABLE. Some states or provinces do not allow the exclusion

or limitations of incidental or consequential damages, so the above limitation or exclusion may not apply to you depending on the state or province of purchase.

Nor does this warranty cover damages caused by use of non-Keurig® pods or accessories, services performed by anyone other than Keurig or its authorized service providers, use of parts other than genuine Keurig® parts, or external causes such as abuse, misuse, inappropriate power supply, or acts of God.

## OTHER LIMITATIONS

THIS WARRANTY IS EXCLUSIVE AND IS IN LIEU OF ANY OTHER EXPRESS WARRANTY, WHETHER WRITTEN OR ORAL. IN ADDITION, KEURIG HEREBY SPECIFICALLY DISCLAIMS ALL OTHER WARRANTIES WITH RESPECT TO YOUR KEURIG® BREWER, INCLUDING ANY IMPLIED WARRANTY OF MERCHANTABILITY OR FITNESS FOR ANY PARTICULAR PURPOSE. Some states or provinces do not allow disclaimers of such implied warranties or limitations on how long an implied warranty lasts, so the above limitation may not apply to you depending on the state or the province of purchase.

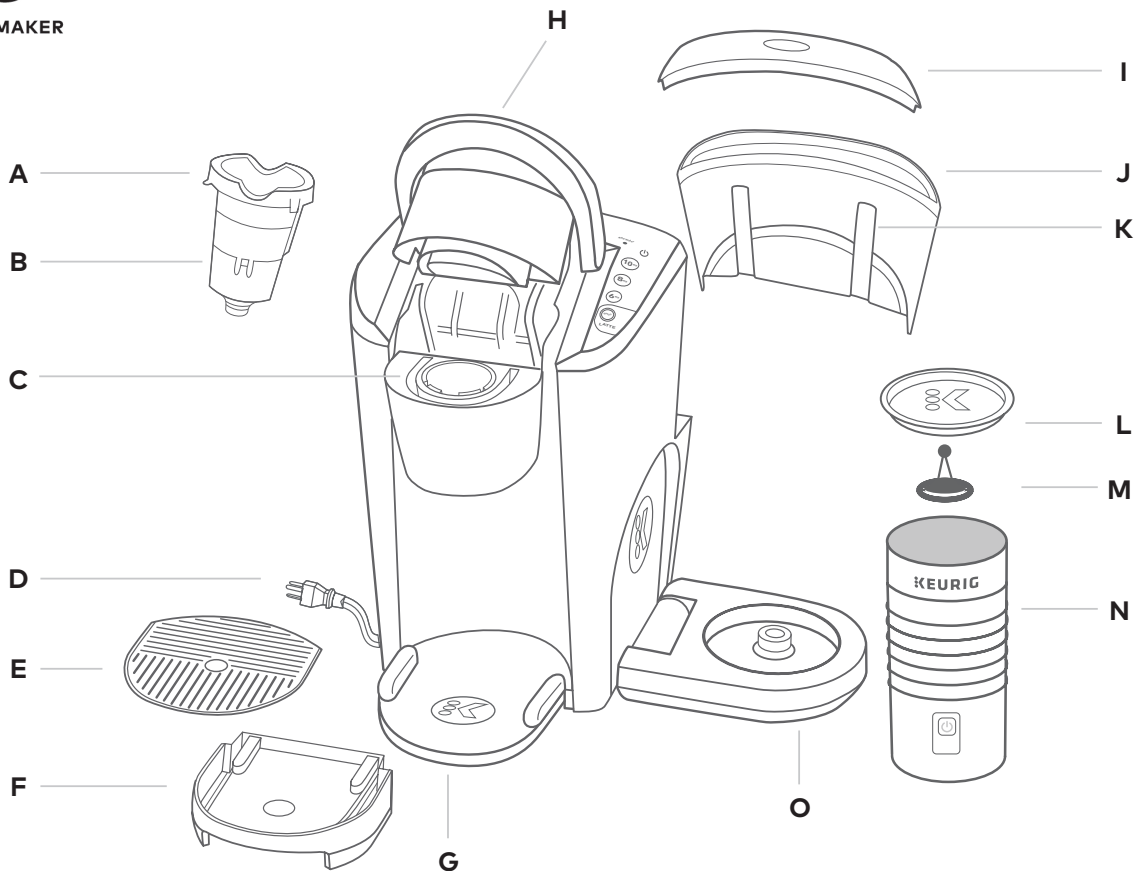
## HOW DO YOU OBTAIN WARRANTY SERVICE?

Keurig® brewers are high-quality appliances and, with proper care, are intended to provide years of satisfying performance. However, should the need arise for warranty servicing, simply call Keurig Customer Service at our toll free phone number 1.866.901.BREW (2739). Please do not return your brewer for servicing without first speaking to Keurig Customer Service to obtain a Return Materials Authorization (RMA) number. Keurig® brewers returned without a RMA number will be returned to the sender without servicing.

# K·Latte™

SINGLE SERVE COFFEE & LATTE MAKER

- A. K-Cup® Pod Holder  
(A and B are the K-Cup®  
Pod Holder Assembly)
- B. Funnel
- C. K-Cup® Pod Assembly  
Housing
- D. Power Cord
- E. Drip Tray Plate
- F. Drip Tray
- G. Drip Tray Base
- H. Handle
- I. Water Reservoir Lid
- J. Water Reservoir
- K. Water Reservoir Lock  
Tab Slots
- L. Frother Lid
- M. Frother Whisk
- N. Frother
- O. Frother Base



For replacement parts, please visit [www.keurig.com](http://www.keurig.com)

**Coffeehouse taste  
in your own home.**

**FIND YOUR PERFECT POD**

With over 70 brands and hundreds  
of varieties, find your match at

**[keurig.com/new](https://www.keurig.com/new)**