

Jet Bot

User manual

VR30T85**** series



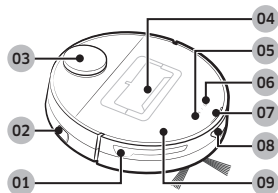
- For full manual, Scan QR code or access online at <https://www.samsung.com>
- Before operating this unit, please read the instructions carefully.
- For indoor use only.



SAMSUNG

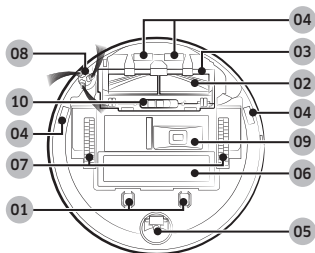


- For the normal use of the Jet Bot's functions, the SmartThings connection is required.



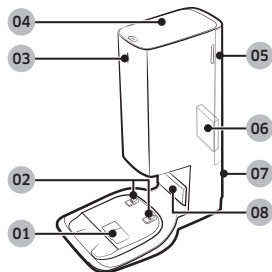
Top

- 01 Obstacle Sensor
- 02 Power switch
- 03 LiDAR Sensor
- 04 Dustbin
- 05 Start/stop button
- 06 Docking (Recharging) button
- 07 Status Indicator
- 08 Docking Sensor Window
- 09 Upper Cover



Bottom

- 01 Charging Pin
- 02 Brush
- 03 Brush Cover
- 04 Cliff Sensor
- 05 Roller
- 06 Battery Cover
- 07 Driving Wheel
- 08 Spin Brush
- 09 Empty Dust Outlet
- 10 Brush Cover Lock

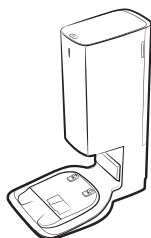


Clean Station

- 01 Dust Suction Port
- 02 Charging Terminal
- 03 Status Indicator
- 04 Cover
- 05 Fine dust Filter Cover
- 06 Fine dust Filter
- 07 Power cord groove
- 08 Charging Signal Transmitter



Accessories may differ depending on the models.



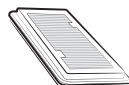
Clean Station



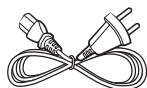
Spin Brush: 2 units
(Inside the product:
1 unit, Spare: 1 unit)



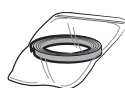
Dust Bag: 2 units
(Inside the product:
1 unit, Spare: 1 unit)



Pre-motor Filter:
2 units
(Inside the product:
1 unit, Spare: 1 unit)



Power cord

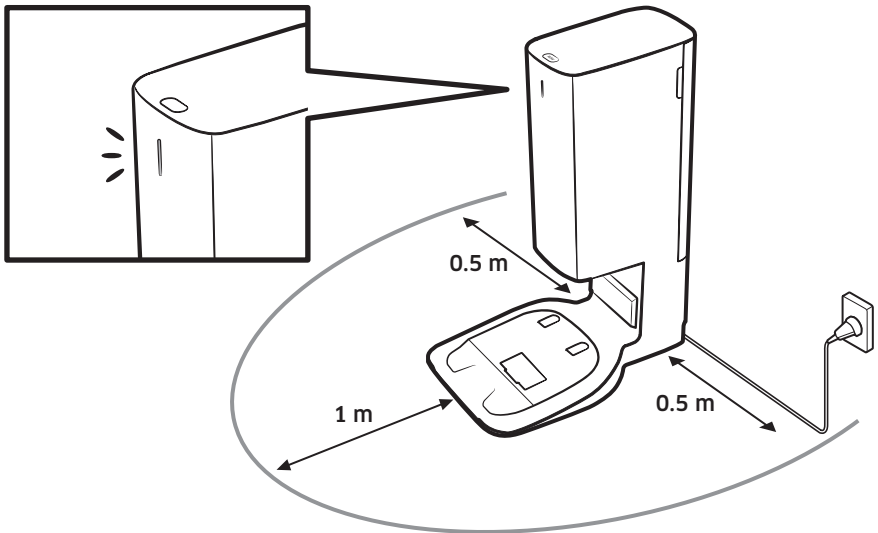
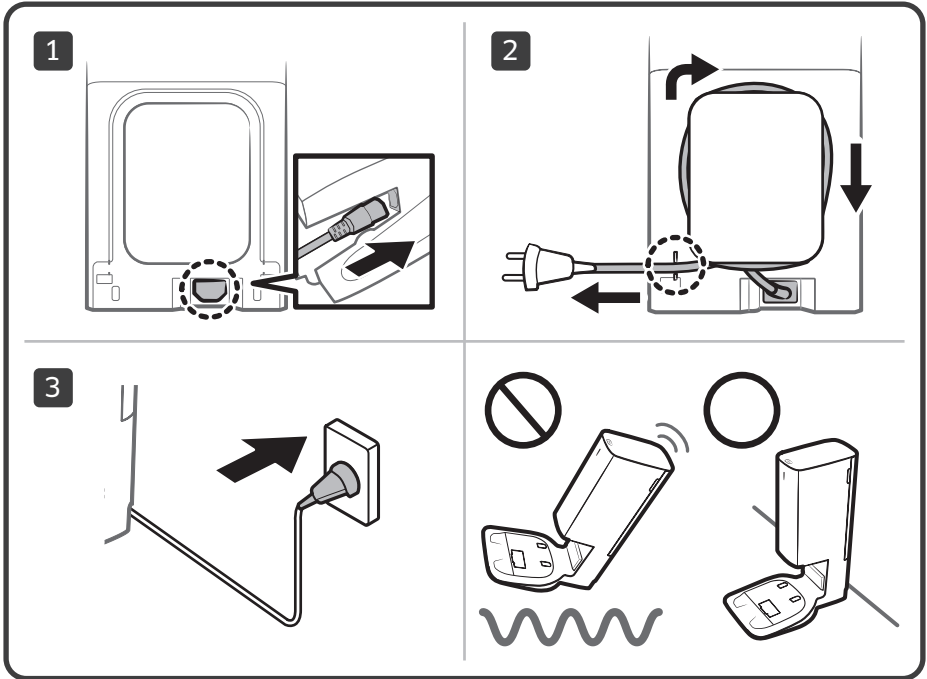


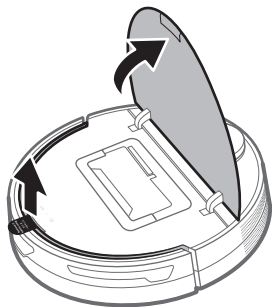
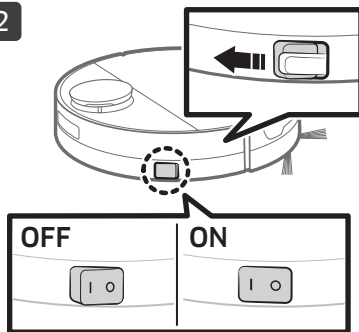
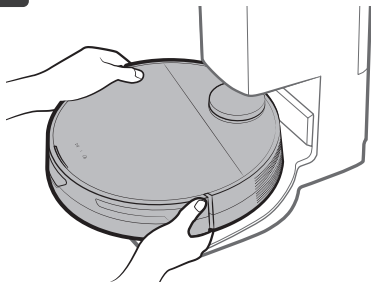
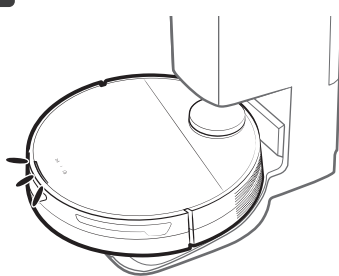
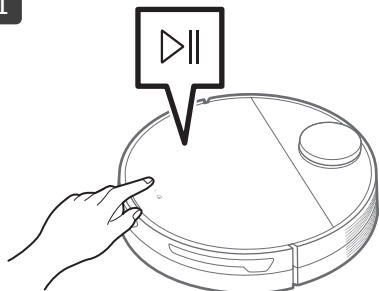
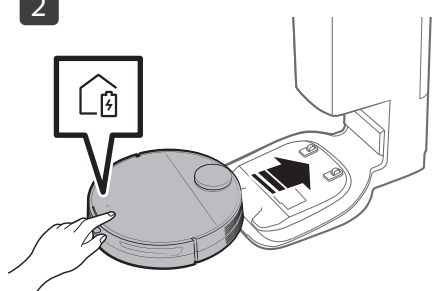
Boundary Markers



User Manual

- If you want to purchase an additional Dust Bag, check the model name (VCA-RDB95) and Samsung logo (**SAMSUNG**) first, then contact your nearest Samsung Electronics retailer or Samsung service center.



**B-1****1****2****3****4****B-2****1****2**

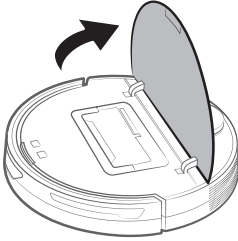


C

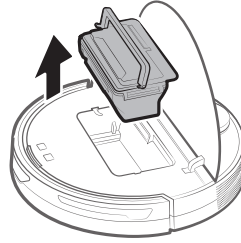
C-1



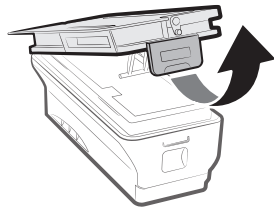
1



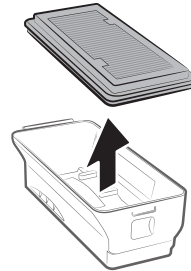
2



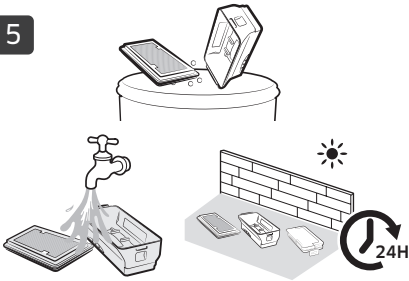
3



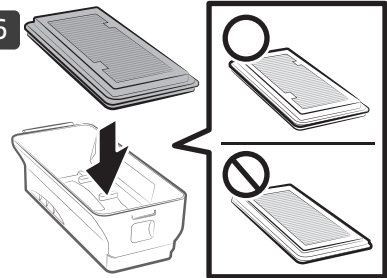
4



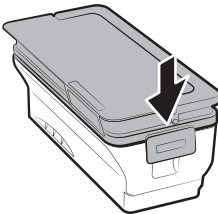
5



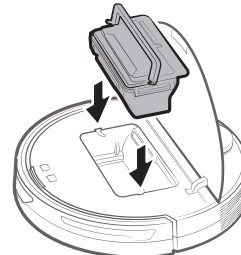
6



7



8

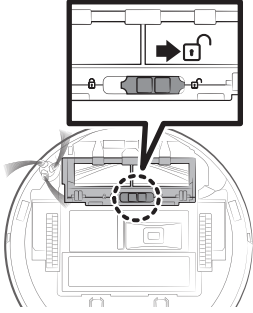




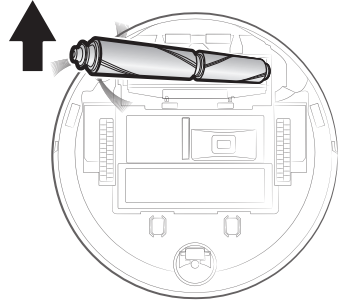
C-2



1



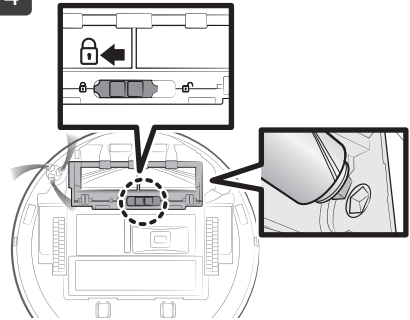
2



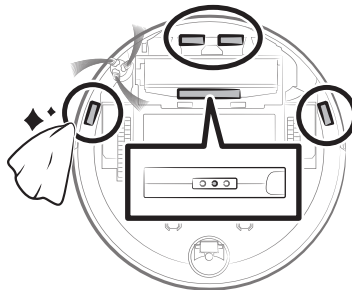
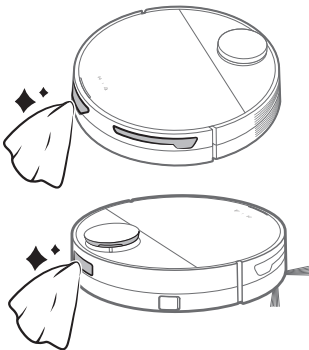
3



4



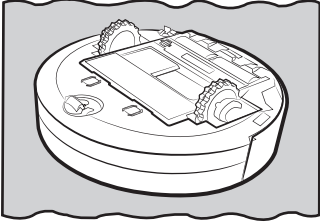
C-3



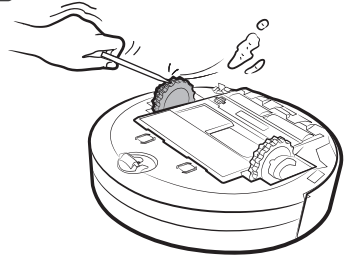


C-4

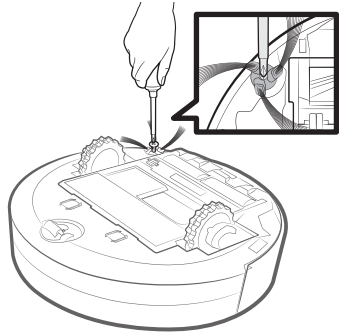
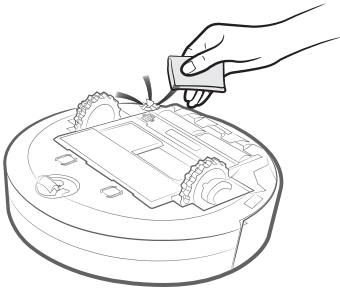
1



2



C-5



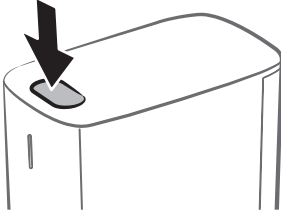


D

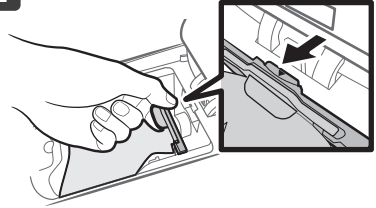
D-1



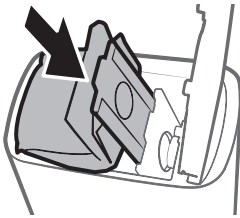
1



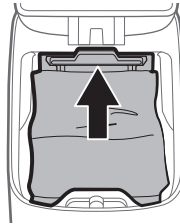
2



3

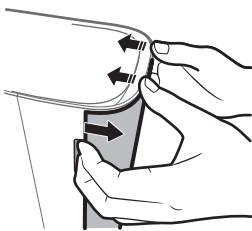


4

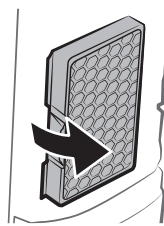


D-2

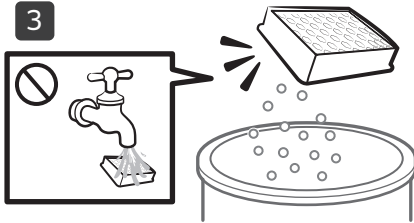
1



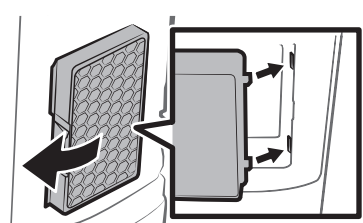
2



3



4



Operation and maintenance

A. Installation

NOTE

- Install the Clean Station in a place where the floor and wall are level.
- If the power cord is too long for the installation environment, coil the power cord around the cable management post, then put it in the fixing groove at the rear of the Clean Station.
- If you reinstall the Clean Station to a position 1 m or more from the previous installed place, recreate the map using the SmartThings App. (If you use the existing map, some places may not be cleaned.)


B. Using the Jet Bot

B-1 Charging the Jet Bot




Charging

- Open the upper cover of the Jet Bot and remove the white gasket.
- Remove the yellow gasket attached to the power switch at the side of the Jet Bot and press the power switch to turn the Jet Bot on.
- Place the Jet Bot on the Clean Station manually to start charging.
 - When the Jet Bot starts charging, the Status Indicator of the Clean Station turns white and after 1 minute, the Status Indicator turns off automatically. (Charging continues though the Status Indicator has turned off.)
- Check the charging status.
 - When charging starts, the Status Indicator of the Jet Bot turns on (red, orange, or yellow depending on charging progress), it rises gradually, and changes to green when the charging is complete.

Docking (Recharging)

- You can return the Jet Bot to the Clean Station while cleaning to recharge.
 - Press the [] on the Jet Bot or use the SmartThings App to select the recharging function.

B-2 Starting cleaning

- Press the [] on the Jet Bot to start cleaning in Auto Clean.
- Press the [] on the Jet Bot to stop operation while cleaning.
 - When pressing the [] , the Jet Bot returns to the Clean Station and starts charging.

C. Cleaning the Jet Bot

Before maintenance work, you should turn off the power switch at the side of the Jet Bot.

C-1 Emptying and cleaning the Dustbin

- Remove the dust on the filter and the Dustbin, clean them with water, and dry completely in the shade.

C-2 Cleaning the brush

C-3 Cleaning the Sensor Window

- Wipe the Sensor Window with a soft cloth.

C-4 Cleaning the Driving Wheel

C-5 Cleaning the Spin Brush

- If curl or deformation occurs, cover the Spin Brush with a hot steamed cloth for 10 seconds, then wipe the Spin Brush.

D. Cleaning the Clean Station

Before cleaning the Clean Station, unplug the power cord from the electrical outlet.

D-1 Replacing the Dust Bag

D-2 Cleaning the Fine dust Filter

- Do not clean the Fine dust Filter with water.

NOTE



- For detailed methods of use and cleaning, refer to the QR code.

Safety information

- Before operating the appliance, please read this manual thoroughly and retain it for your reference.
- Because the following operating instructions cover various models, the characteristics of your vacuum cleaner may differ slightly from those described in this manual.

Caution/Warning symbols used

WARNING

Indicates that a danger of death or serious injury exists.

CAUTION

Indicates that a risk of personal injury or material damage exists.

Other symbols used

NOTE

Indicates that the following text contains additional important information.

Failure to meet these requirements could cause damage to the internal parts of the vacuum and void your warranty.

If your appliance is fitted with a nonrewireable BS 1363 plug it must not be used unless an appropriately rated (ASTA approved to BS 1362) fuse is fitted in the carrier contained in the plug.

To determine the correct rating of the fuse refer to the marking on the plug.

General

- Do not allow to be used as a toy. Close attention is necessary when used by or near children.
- Use only as described in this manual.

- Do not operate the Jet Bot or the Clean Station if it has been damaged in any way.
- If the vacuum cleaner is not working as it should, has been dropped, damaged, left outdoors, or dropped in water, return it to a customer care center.
- Do not handle the Clean Station or the Jet Bot if your hands are wet.
- Use only on dry, indoor surfaces.
- This appliance can be used by children aged from 8 years and above and persons with reduced physical, sensory or mental capabilities or lack of experience and knowledge if they have been given supervision or instruction concerning use of the appliance in a safe way and understand the hazards involved. Children should not play with the appliance. Children should not clean or perform maintenance on the vacuum without adult supervision.
- Move the cords of other appliances so they are not in the area that is to be cleaned.
- Do not operate the vacuum in a room where an infant or child is sleeping.
- Do not operate the vacuum in an area where there are lit candles or fragile objects on the floor.
- Do not operate the vacuum in a room that has lit candles on furniture that the vacuum may accidentally hit or bump into.
- Do not allow children to sit on the vacuum.
- Do not use the vacuum on a wet surface.
- If the supply cord is damaged, it must be replaced by the manufacturer or its service agent or a similarly qualified person in order to avoid a hazard.
- For information on Samsung's environmental commitments and product specific regulatory obligations e.g. REACH (WEEE, Batteries) visit: samsung.com/uk/aboutsamsung/samsungelectronics/corporatecitizenship/data_corner.html

Safety information

Clean Station

- Do not modify the polarized plug to fit a non-polarized outlet or extension cord.
- Do not use outdoors or on wet surfaces.
- Unplug the Clean Station from the outlet when not in use and before servicing.
- Use only the Clean Station supplied by the manufacturer to recharge.
- Do not use with a damaged cord or a plug or a loose power outlet.
- Do not pull or carry by the cord, use the cord as a handle, close the door on the cord, or pull the cord around sharp edges or corners. Keep the cord away from heated surfaces.
- Do not use extension cords or outlets with inadequate current carrying capacity.
- Do not unplug by pulling on the cord. To unplug, grasp the plug, not the cord.
- Do not mutilate or incinerate batteries as they will explode at high temperatures.
- Do not attempt to open the Clean Station. Repairs should only be carried out by a qualified customer care center.
- Do not expose the Clean Station to high temperatures or allow moisture or humidity of any kind to come into contact with the Clean Station.
- Do not charge the non-rechargeable batteries with the Clean Station.

Jet Bot

- Do not pick up hard or sharp objects such as glass, nails, screws, coins, and etc.
- Do not use without a filter in place. When servicing the unit, never put fingers or other objects into the fan chamber in case the unit accidentally turns on.
- Do not put any objects into openings. Do not use with any openings blocked; keep openings free of dust, lint, hair, and anything that may reduce air flow.
- Do not pick up toxic materials (chlorine bleach, ammonia, drain cleaner, etc.).

- Do not pick up anything that is burning or smoking, such as cigarettes, matches, or hot ashes.
- Do not use to pick up flammable or combustible liquids such as gasoline or use in areas where they may be present.
- Also do not use in:
 - Locations with candles or desk lamps on the floor.
 - Locations with unattended fires (fire or embers).
 - Locations with distilled alcohol, thinner, ashtrays with burning cigarettes, etc.
- Do not use the Jet Bot in an enclosed space filled with vapors given off by oil based paint, paint thinner, moth proofing substances, flammable dust, or other explosive or toxic vapors.
- Leaks from battery cells can occur under extreme usage or temperature conditions. If the liquid gets on the skin, wash quickly with water. If the liquid gets into the eyes, flush them immediately with clean water for a minimum of 10 minutes. Seek medical attention.

Power related

WARNING

- Please prevent any risk of electric shock or fire.
 - Do not damage the power cord.
 - Do not pull the power cord too hard or touch the power plug with wet hands.
 - Do not use a power source other than rated voltage of the charger and also do not use a multi-outlet to supply power to a number of devices at the same time. (Do not leave the cord carelessly on the floor.)
 - Do not use a damaged power plug, a power cord or a loose power outlet.
- Clean dust or any foreign matter on the pin and the contact part of the power plug.
 - There is a risk of electric shock or malfunction.

Safety information

Before use

WARNING

- Do not use the Jet Bot near a heater or combustible materials.
 - Do not use the Jet Bot near fire or flame such as a movable heater, a candlelight, a desk lamp, a fireplace, etc. or in a place where combustible materials such as gasoline, alcohol, thinner, etc. exist.
- Make sure there are no dangerous objects around the Jet Bot's cleaning area to prevent collision and unplug any electric heaters or fans.
 - The Jet Bot can be damaged or malfunction.
- The Jet Bot is intended for household use therefore do not use it in an attic, basement, storage, an industrial building, out of indoor space, places with moisture (such as a bathroom, a laundry room), on the table or shelves.
 - The Jet Bot can be damaged or malfunction.
- Attach the Boundary Markers to a place where the Jet Bot may fall such as a stair or a banister to prevent product damage and injury.
 - Please keep the Cliff Sensor clean all the time for safety.
- Be sure the Jet Bot does not suck in or touch any kind of liquids (water, beverage, filth, etc.).
 - The Jet Bot can be severely damaged and it may contaminate other areas if the wheels pass through liquid.
- Do not spill any liquids on the Clean Station.
 - There is a risk of fire or electric shock.
- Do not use the Clean Station for anything other than its intended purposes.
 - There is a risk of fire or severe damage to the Clean Station.
- Always keep the Cliff Sensor clean for your safety.

- As this wireless installation may cause radio interference, it cannot provide a service related with human safety.

CAUTION

- Insert the Dustbin before using the Jet Bot.
- When installing the Clean Station, do not leave the cord carelessly on the floor since the Jet Bot may get tangled by it.
- To clean all areas of your house, open all rooms and set the No-go Zones with the SmartThings App or attach the Boundary Markers to the places where the Jet Bot may get damaged such as a front door, a veranda, a bathroom, and stairs for safety.
- Follow these recommendations for proper automatic recharging.
 - Always turn on the power of the Clean Station.
 - Install the Clean Station where the Jet Bot can easily find.
 - Do not leave any objects in front of the Clean Station.
- Do not use the Jet Bot on black colored floors.
 - The Jet Bot may not be able to operate normally.
- Do not place any objects within 0.5 m of either side of the Clean Station or within 1 m of the front of the Clean Station.
- Make sure the Clean Station's charging contact is not damaged or have any foreign matter on it.
- For the very low areas where the Jet Bot may get stuck, set the No-go Zones with the SmartThings App or attach the Boundary Markers to prevent the Jet Bot from getting in.
- Do not install the Clean Station in an area with a dark floor.
 - If the floor around the Clean Station is dark, recharging is hindered.
- Move any obstacles that may disturb the Jet Bot's movement (such as children's indoor swing or slides) before cleaning.

Safety information

- Do not use the Jet Bot in a place which is narrower than its turning radius 0.5 m or less.
- Before operating the Jet Bot, remove the objects which could break such as glass, a frame, a mirror, and porcelain items so that the Jet Bot works without interruption.
- If a brush or a brush cover is not assembled correctly, scratches may occur on the floor, or product malfunction may occur.
- Use both hands to carry the product.
- Do not place the Clean Station in a place where people pass by frequently, in entrance way or narrow passage.
 - People may trip over it and be injured, or product damage may occur.
- Do not push the Clean Station.
- Remove any large papers or plastic bags immediately when using the Jet Bot since they may block the intake.
- Do not lie down around the Jet Bot that is running.
 - Your hair may be caught in the brush, resulting in physical injury.
- Do not allow children to play with the Jet Bot.
- Make sure hair, fingers, clothes do not get caught in a spin brush or Driving Wheels.
- Do not allow children to sit on the Jet Bot and do not place an object on the Jet Bot.
- Leave over 3 cm space from the inner doorstep placed in the entrance. Otherwise, the robot vacuum can ride on it and go outside.

In use

WARNING

- If any abnormal sounds, smells or smoke come from the Jet Bot, immediately shut off the power switch of the Jet Bot and contact a service center.

CAUTION

- Using the Jet Bot on a thick carpet may damage both the Jet Bot and the carpet.
 - The Jet Bot cannot pass over a carpet with fiber longer than 2 cm.
- Do not use the Jet Bot on tables or other high surfaces.
 - There is a risk of damage if it falls.
- The Jet Bot may bump into chairs or desk legs, therefore move them away for faster and efficient cleaning.
- When the Jet Bot is operating, do not lift it up or carry it to another area.
- Do not hold by Driving Wheels of the Jet Bot when carrying it to another area.
- Do not put any objects on top of the Jet Bot since it may cause malfunction of the LiDAR sensor or the Jet Bot.

Cleaning and maintenance

WARNING

- When the power cord is damaged, contact a service center to get it replaced by a certified repairman.
 - There is a risk of fire or electric shock.
- Please check with a SAMSUNG Electronics service center when replacing batteries.
 - Using batteries from other products can cause malfunction.
- Be careful not to put your finger into the revolving LiDAR sensor. Otherwise, your finger may get injured.

CAUTION

- Prevent any damage to the Jet Bot by complying with the following.
 - Do not clean the Jet Bot by spraying water directly onto it or use a volatile substance such as benzene, thinner, or alcohol to clean it.
- Do not disassemble or repair the Jet Bot. This should only be done by a certified repairman.

Safety information

- Always keep the Obstacle Sensor Window and the Cliff Sensor Window clear.
 - If foreign matter accumulates, sensors may malfunction.
- Do not store the Jet Bot in a car.
- Be careful that the LiDAR sensor is not exposed to a direct light such as sun light, infrared light, etc.
 - The direct light can affect the performance of the LiDAR sensor.
- When carrying the Jet Bot, be careful not to let it drop.
 - The impact from the drop can affect the operation or performance of the LiDAR sensor.
- Do not look at the transmitting part (a laser) of the revolving LiDAR sensor horizontally.
- Be careful not to insert a tool such as a chopstick into the revolving LiDAR sensor. Otherwise, the LiDAR sensor may work abnormally or malfunction.
- Before cleaning, remove objects which are less than 9 cm height and are lightly on the floor as the Jet Bot can push along them, or the objects can be caught in the Jet Bot's Spin Brush or Driving Wheels. (Fixed objects can be detected by the Jet Bot when its bumper is pressed and will avoid them.)
- If oil such as cooking oil is on the floor, the Jet Bot may become stationary because the floor is slippery. Remove the oil first before cleaning with the Jet Bot.

Notes and cautions

Installation

NOTE

- If the cleaning area is wooden floors, it is best to install the Clean Station along the grain of wooden floors.
- If the power switch is off, the Jet Bot will not charge even if it is docked on the Clean Station.
- Always keep the Clean Station on.
 - If power is not supplied to the Clean Station, the Jet Bot cannot find it and cannot automatically recharge.
 - If the Jet Bot is left detached from the Clean Station, the battery will drain naturally.
- Do not attach the Boundary Markers as (----) shape.
 - The Jet Bot may not detect it and cross the boundary.

Charging

NOTE

- If the battery overheats during charging, it may take longer to charge.
- When auto charging is not working, do the following:
 - Turn the power switch (at the side the Jet Bot) off and on again.
 - Unplug the Clean Station's power plug and then plug it back on.
 - Unplug the Clean Station, and then check whether there is any foreign matter on the charging pins and clean charging pins of the Jet Bot and the Clean Station with a dry cloth or rag.
 - Check for any obstacles such as reflective objects, chairs, etc. near the Clean Station.

- If the Jet Bot is left detached from the Clean Station, the battery will drain naturally.
 - Try to keep the Jet Bot being charged on the Clean Station. (However, turn off the power switch and leave the Clean Station unplugged when planning to leave the house for long periods of time by going on a business trip or vacation, etc.)

Using

NOTE

- The Jet Bot may get caught on thresholds of entrance door or veranda, etc. during cleaning.
 - To restart operation, shut off the power switch, move the Jet Bot to an area where it can move easily, and then turn on the power again.
- In a dark area, the Jet Bot may not recognize an object.
 - Before cleaning, remove obstacles on the floor.
- The Jet Bot cannot completely clean areas which it cannot enter, such as small space between the corner, between the sofas or walls, etc.
 - Please use another cleaning tool to clean them regularly.
- The Jet Bot cannot vacuum clumps of dirt, so some may remain on the floor after cleaning.
 - Please use another cleaning tool to clean them regularly.
- After turning the Jet Bot off, wait for a while and then turn it on for a normal rebooting.
- When the Clean Station smells, replace a Dust Bag or clean filters.
- If there is a larva in the suctioned dust, it can multiply in the Dust Bag. Clean the Clean Station with a wet tissue and replace the Dust Bag.

Notes and cautions

Cleaning and maintenance

NOTE

- If you washed the Dustbin and filter with water
 - Dustbin: Completely wipe out the water.
 - Filter: Completely dry it in the shade before use.
- Do not use water to clean the Fine dust Filter, just shake it to clean.
- If suction power decreases continuously, or the Jet Bot overheats, clean the Fine dust Filter.

CAUTION

- Watch your fingers when attaching or detaching the filter, since they may get stuck in the Dustbin's intake.
- To avoid blockages by foreign matter, do not let the Jet Bot vacuum up toothpicks, cotton swabs, etc.
- If it is difficult to remove foreign matter from the brush, contact an authorized SAMSUNG service center.
- Since the brush sweeps dirt up from the floor during cleaning, foreign matter such as a thin and long thread, long hair, etc. may get caught in it. For the best cleaning results, check and clean it regularly.
- Turn off the Jet Bot before cleaning or maintenance work.
- If a brush or a brush cover is not assembled correctly after the maintenance work, scratches may occur on the floor, or product malfunction may occur. Therefore, assemble them correctly by checking the maintenance method.

Battery usage

NOTE

- When you purchase a battery, check the SAMSUNG logo (**SAMSUNG**) attached on the battery and the model name, then contact a service center.
- This battery is exclusively for the SAMSUNG Electronics Jet Bot. Do not use it for any other products or purposes.
- Do not disassemble or modify the battery.
- Do not throw the battery out in fire or heat it.
- Do not connect any metallic object to the charging contacts (+, -).
- Store the battery indoors (at 0 °C~40 °C).
- If the battery malfunctions, do not disassemble it yourself. Contact your nearest SAMSUNG service center.
- As the battery is used over a length of time, the battery charging time and usage time decreases. In this case, contact a service center and replace it with a new battery.
- Do not disassemble the battery yourself and make sure short circuit of +, - poles does not occur.
- When battery leak occurs, make sure it does not touch your skin or eyes.

SmartThings App

The SmartThings App is only compatible with models that have a Wi-Fi function.

If you do not have a Wi-Fi router, you cannot use the SmartThings App.

Downloading the SmartThings App

- Download and install the SmartThings App from the markets (Google Play Store, Apple App Store, or SAMSUNG Galaxy Store). To find the app, use the keyword "SmartThings".

NOTE

- SmartThings is incompatible with some tablets and some mobile devices.
- Some iPads and some mobile devices may not be supported.
- Visit Play Store or App Store to see if your mobile device is compatible with SmartThings.
- The supporting software version of the SmartThings app is subject to change according to the OS supporting policy the manufacturer provides. In addition, as for the SmartThings app or the functions that the app supports, the new application update policy on the existing OS version can be suspended due to usability or security reasons.
- The SmartThings app is subject to change without notice to improve usability or performance. As the mobile phone OS version is updated every year, the SmartThings is also updated continually according to the latest OS.
- If you have enquiries regarding the items mentioned above, please contact us on st.service@samsung.com.


Setting up a SAMSUNG account

- You must sign in to a SAMSUNG account before using the SmartThings App.
- To set up a SAMSUNG account, you can follow the directions provided by the SmartThings App.
- Or, if you have a SAMSUNG smartphone, you can add your SAMSUNG account in the setting app of your smartphone. Then, it will automatically sign in to your SAMSUNG account and you can use the SmartThings App.

Registering a device to the SmartThings App

- 1 Connect your smartphone to your wireless router.**
 - If the smartphone is not connected, turn on the Wi-Fi in the Settings App and select a wireless router you want to connect to.
 - Set your smartphone to use Wi-Fi only and connect a device.
- 2 Launch the SmartThings App on your smartphone.**
- 3 If a pop-up saying that a new device has been found appears, tap ADD NOW.**
 - If the pop-up does not appear, add a device by selecting the 'Home appliances' category → 'Robot cleaner' and the Jet Bot to connect.
 - If you scan the SmartThings QR code attached on the Jet Bot, you can connect to the Jet Bot more easily.
- 4 [Android] The connection to your device will be progressed automatically.**
 - [iOS] Open the setting app, and select [vacuum]_E30AJT** in the Wi-Fi list.
- 5 Provide the authentication when you are directed to do so.**
- 6 [Android] The connection to your wireless router will be progressed automatically.**
 - [iOS] Open the setting app, and select the wireless router in the Wi-Fi list.
- 7 When the product registration is complete, the Jet Bot device card is added.**

NOTE

- Setting Wi-Fi On/Off: Hold the [] button down for 7 seconds to switch the Wi-Fi off or on to use again while the vacuum cleaner is on standby or charging.

SmartThings App

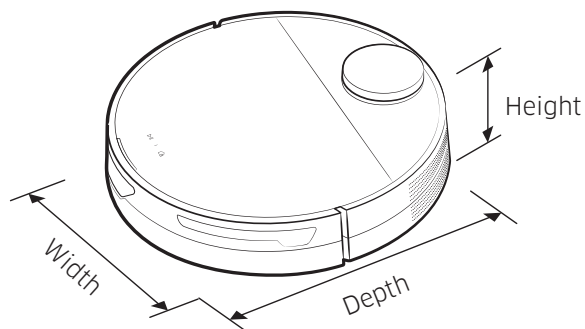
Functions of the SmartThings App

Classification	Functions	Explanation
Monitoring	Cleaning Report	<ul style="list-style-type: none"> You can check the result of the last cleaning. You can check the histories of last 50 cleanings.
		<ul style="list-style-type: none"> You can stop cleaning and have the Jet Bot return to the Clean Station.
Control	Dock	<ul style="list-style-type: none"> You can stop cleaning and have the Jet Bot return to the Clean Station.
	Pause	<ul style="list-style-type: none"> You can stop cleaning or restart cleaning.
	Cleaning Mode	<ul style="list-style-type: none"> You can set the cleaning mode you want.
	Cleaning Functions	<ul style="list-style-type: none"> You can set various cleaning functions. <ul style="list-style-type: none"> For some functions, you need to create a map first. For Room Clean and Spot Clean, you can choose only one of them, and the default setting is 'All' (All Rooms). When the Jet Bot is in the Room Clean or the Spot Clean, it may pass an unselected area to go to the cleaning place or to recharge.
	Schedule	<ul style="list-style-type: none"> You can start designated cleaning at the scheduled time.
Setting	Sound Mode	<ul style="list-style-type: none"> You can set the voice guide to [Voice], [Sound Effect], or [Mute].
	Language	<ul style="list-style-type: none"> The Jet Bot supports 14 languages.
	Volume	<ul style="list-style-type: none"> You can control the volume of the voice guide.
	Downtime	<ul style="list-style-type: none"> At the designated time, the Jet Bot stops cleaning and returns to the Clean Station. <ul style="list-style-type: none"> You may start cleaning during Downtime.
	Find Robot Vacuum	<ul style="list-style-type: none"> The Jet Bot makes a sound so that a user can find it.
	Child Lock	<ul style="list-style-type: none"> The Jet Bot locks its buttons so that they do not function. To unlock the buttons, turn the Jet Bot off and then on again.
	Empty Dust	<ul style="list-style-type: none"> You can select when to empty the dustbin of the Jet Bot.
Notice	Cleaning completed	<ul style="list-style-type: none"> When cleaning is complete, you can receive cleaning completion notice.
	Check Notice	<ul style="list-style-type: none"> If the Jet Bot needs to be checked, you can receive a notice.
Manage maps	No-go Zones	<ul style="list-style-type: none"> You can set a zone where you do not want the Jet Bot to clean. <ul style="list-style-type: none"> You can create maximum 15 zones.
	Edit Map	<ul style="list-style-type: none"> You can divide or combine rooms on the created map. You can change the name of a room.
	Reset Map	<ul style="list-style-type: none"> Reset the saved map.

Troubleshooting

Symptom	Checklist
The Jet Bot is not working at all.	<ul style="list-style-type: none">• Check if the power switch is on.• Check if the Status Indicator is on.• Check if the Jet Bot's battery is depleted.<ul style="list-style-type: none">- When the Jet Bot's Status Indicator turns red and stays red, place the Jet Bot manually on the Clean Station to charge it.• When you manually charge the Jet Bot due to complete discharge of its battery, the buttons on the Jet Bot do not work. When charging is partially complete (about 10-20 minutes later), the Status Indicator is on and the buttons work again.
The Jet Bot has stopped during cleaning.	<ul style="list-style-type: none">• When the Jet Bot's Status Indicator turns red and stays red, place the Jet Bot manually on the Clean Station to charge it.• When the Jet Bot is immobilized by an obstacle such as a cord, obstacles, threshold, a raised spot, etc., pick it up and move it away from the obstacle.<ul style="list-style-type: none">- If any fabric or string is caught in a Driving Wheel, turn off the power switch and remove the fabric or string before using it again.• Check whether the No-go Zones are set.
Suction power is weak.	<ul style="list-style-type: none">• When there's too much dust in the Dustbin, suction power may get weakened. Turn off the power switch and empty the Dustbin.• If the brush at the bottom of the Jet Bot is blocked by foreign matter, turn off the power switch and remove foreign matter from the brush.• When noise suddenly increases, turn off the power switch and empty the Dustbin.
The Jet Bot cannot find the Clean Station.	<ul style="list-style-type: none">• Check if there's a power failure or whether the power plug is unplugged.• Remove any obstacles around the Clean Station that may prevent the Jet Bot from returning to the Clean Station.• When there's foreign matter on the charging terminals, charging can be affected. Clean the foreign matter off the terminals.
The Jet Bot does not detect the Boundary Marker and crosses the boundary.	<ul style="list-style-type: none">• Make sure the Boundary Markers are attached as (□) shape at 15 cm before the locations where the Jet Bot should not cross.

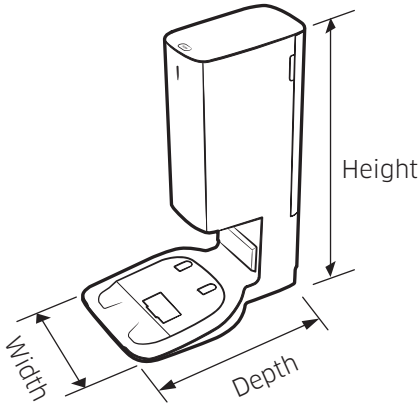
Product specification



Classification	Items	VR30T85**** series
Mechanical specifications	Weight	3.4 kg
	Size	W 350 mm x D 350 mm x H 99.8 mm
	Cleaning method	LiDAR location recognition
	Button method of the Jet Bot	Touch type
Electrical specifications	Power consumption of the Jet Bot	60 W (Spot Clean)
	Battery specification	Lithium-ion 21.9 V / 52.56 Wh
Cleaning part	Charging type	Auto charging / Manual charging
	Cleaning Methods	Auto Clean, Room Clean, Spot Clean
	Additional functions	Energy-Saving Mode, Downtime Mode, Scheduled Cleaning, No-go Zones setting
	Charging time	About 240 minutes
	Cleaning time (Based on a wooden floor)	Max
Smart		About 60-90 minutes
Normal		About 90 minutes
Wi-Fi	Frequency range	2412-2472 MHz
	Transmitter power(Max)	20 dBm

- Hereby, Samsung Electronics, declares that the radio equipment type appliance is in compliance with Directive 2014/53/EU. The full text of the EU declaration of conformity is available at the following internet address: The official Declaration of conformity may be found at <http://www.samsung.com>, go to Support > Search Product Support and enter the model name.
- Charging and cleaning time may differ depending on the conditions of use.
- You can set the Downtime, the Scheduled Cleaning, the No-go Zones at the SmartThings App.

Product specification



Name		Clean Station
Rated voltage		220 - 240 V~ 50-60 Hz
Rated output current		25.85 V, 1.0 A
Power consumption	Charging	40 W
	Operation	1300 W (When using suction power)
Weight		5.0 kg
Size		W 272 mm x D 416 mm x H 544 mm
Operating time		About 18 seconds

Open Source Announcement

The software included in this product contains open source software.

To obtain the source code covered under licenses which have the obligation of publishing source code (e.g. GPL, LGPL... etc), please visit <http://opensource.samsung.com/> and search by model name.

It is also possible to obtain the complete corresponding source code in a physical medium such as a CD-ROM; a minimal charge will be required.

The following URL http://opensource.samsung.com/opensource/VR9500_0/seq/0 leads to open source license information as related to this product. This offer is valid to anyone in receipt of this information.



Warnings about battery



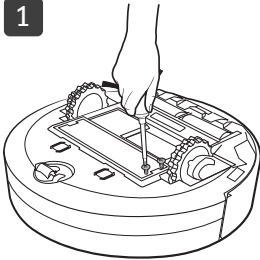
You must not remove (or attempt to remove) the battery incorporated in this product on your own. To replace the battery, you must contact your service provider or an independent qualified professional. **These instructions have been prepared for the exclusive use of your service provider or independent qualified professional.**

FOR YOUR OWN SAFETY, DO NOT ATTEMPT TO REMOVE THE BATTERY ON YOUR OWN OR DISPOSE OF IT IN FIRE. DO NOT DISASSEMBLE, CRUSH OR PUNCTURE THE BATTERY.

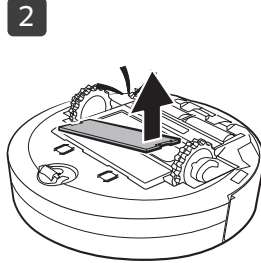
How to remove the battery

You must turn off Jet Bot for safety before disassembling.

1



2



3



Correct disposal of batteries in this product

(Applicable in countries with separate battery return systems.)

The marking on the battery, manual or packaging indicates that the battery in this product should not be disposed of with other household waste. Where marked, the chemical symbols Hg, Cd or Pb indicate that the battery contains mercury, cadmium or lead above the reference levels in EC Directive 2006/66.

The battery incorporated in this product is not user replaceable. For information on its replacement, please contact your service provider. Do not attempt to remove the battery or dispose it in a fire. Do not disassemble, crush, or puncture the battery. If you intend to discard the product, the waste collection site will take the appropriate measures for the recycling and treatment of the product, including the battery.

If you have any questions or comments relating to Samsung products, please contact the SAMSUNG customer care center.

Country	Customer Care Center	Web Site
UK	0333 000 0333	www.samsung.com/uk/support

