

QUICK SETUP GUIDE

# Mini Sonic Portable Speaker

## NS-MINISONIC20

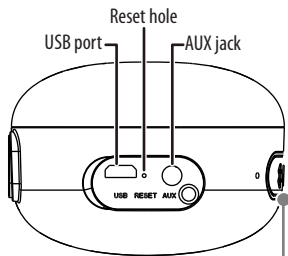
PACKAGE CONTENTS

- Mini Sonic portable speaker
- USB cable
- Lanyard
- Quick Setup Guide

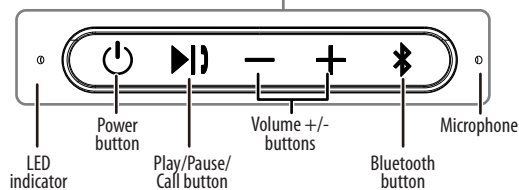
FEATURES

- Rechargeable battery lasts up to 23 hours
- Wirelessly streams from any Bluetooth device up to 33 ft. (10 m) away
- IPX4 rating provides splash resistance
- Passive radiator helps deliver strong sound/performance
- Speakerphone allows for hands-free calling
- True wireless stereo (TWS) lets you connect two Mini Sonic speakers together to play left-and-right channel audio separately.

Right side



Top



BUTTON FUNCTION

BUTTON	FUNCTION
	Press and hold to turn the speaker on and off. Press twice to announce left or right channel in TWS mode.
	<b>In Bluetooth mode:</b> Press to play/pause the content. Press and hold for two seconds to activate Siri or other voice control software Press to answer an incoming call and press again to hang up the call. Press and hold for two seconds to reject an incoming call. Press and hold for two seconds to switch between two calls. Press and hold for two seconds to switch audio between the phone and speaker during a call. Double-click to re-dial the latest called number. <b>In AUX mode:</b> Press to mute/unmute the speaker.
	Press to increase or decrease volume. Press and hold to go to the previous/next song.
	Press and hold for two seconds to connect/disconnect a Bluetooth device. Press twice to connect/disconnect TWS pairing.

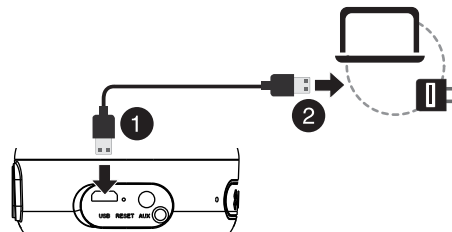
LED INDICATOR

LED	FUNCTION
<b>Blinks blue quickly</b>	Bluetooth pairing mode
<b>Lights solid blue</b>	Paired to a Bluetooth device
<b>Blinks blue slowly</b>	AUX play or AUX mute
<b>Lights red</b>	Speaker is charging (charging complete when LED turns off)
<b>Lights Blue / Red / Green</b>	Call activated
<b>Blinks green quickly</b>	TWS pairing mode
<b>Lights solid green</b>	TWS connected

CHARGING YOUR SPEAKER

- 1 Connect one end of the USB cable to the USB port on the right side of your speaker.
- 2 Connect the other end of the USB cable to a USB port on your computer or wall adapter (not included). The LED indicator is red while charging, then turns off when the speaker is fully charged.

**Note:** The speaker beeps continually when the battery is low.



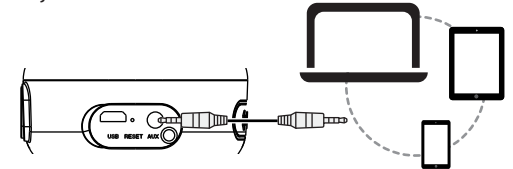
CONNECTING AN AUDIO DEVICE

Bluetooth

- 1 Press and hold (power) to turn on your speaker. The LED indicator blinks blue quickly and your speaker automatically enters pairing mode.
- 2 Make sure that your Bluetooth device is within 33 ft. (10 m) of your speaker.
- 3 Turn on your Bluetooth device, turn on Bluetooth, then enter pairing mode. For more information, see the documentation that came with your Bluetooth device.
- 4 On your Bluetooth device, select **Insignia Mini Sonic**. Your speaker pairs with your Bluetooth device and the LED indicator lights solid blue.
- 5 To disconnect, un-pair your Bluetooth device from your speaker.  
OR  
Press and hold (Bluetooth) for two - three seconds on your speaker. Your Bluetooth devices loses connection automatically.

3.5 mm audio cable

Connect a 3.5 mm audio cable (not included) from your speaker's **AUX** jack to your audio device's headphone/audio out jack.



The LED indicator blinks blue slowly while connected to an audio cable.

CONNECTING YOUR SPEAKERS WITH TWS

TWS lets you connect two Mini Sonic speakers together to play left-and-right channel audio separately.

- 1 Make sure that your Mini Sonic speakers are near each other.
- 2 Press (Bluetooth) twice on each speaker within one minute. Each speaker will say "true wireless pairing" and they will pair automatically.  
**Notes:**
  - If one Mini Sonic speaker is already connected to your Bluetooth device, press (Bluetooth) twice on this speaker, it will pair automatically with the other one.
  - If both Mini Sonic speakers are in pairing mode, press (Bluetooth) twice on either speaker, it will pair automatically with the other one.
  - After they are paired, the first speaker says "paired, please connect to your device" then the green LED blinks slowly. The other speaker's green LED is on.
- 3 On your Bluetooth device, select **Insignia Mini Sonic**. After they are connected, the speakers says "left channel" and "right channel".  
**Note:** If they do not pair, you may need to delete all **Insignia Mini Sonic** from your device and pair them again.
- 4 Press (power) twice. The speaker announces that it is either the left or right channel so you know which side to place the speaker on.

**Note:** While TWS is activated, only the speaker that slowly blinks (green) can be used for phone calls. This speaker blinks Blue/Red/Green when a call is active.

**Note:** TWS function does not support AUX input

## TAKING A PHONE CALL

### Using your speaker

The following functions are available when paired to a phone with Bluetooth:

- **Reject an incoming call:**  
Press and hold ►|] (Play/Pause/Call).
- **Answer an incoming call:**  
Press ►|] (Play/Pause/Call).
- **Switch audio between your speaker and phone during a call, or switch between two calls:**  
Press and hold ►|] (Play/Pause/Call).
- **End current call:**  
Press ►|] (Play/Pause/Call).
- **Redial the last dialed number:**  
Press ►|] (Play/Pause/Call) twice.

## RECONNECTING TO A PAIRED DEVICE

- Make sure that the last paired Bluetooth device is near your speakers.
- When your speaker is on, it automatically searches for and tries to connect to the last paired device.

## USING YOUR SPEAKER

### Listening to audio

- 1 Connect to your speaker with Bluetooth or a 3.5 mm audio cable.
- 2 Play audio on your connected device.
- 3 Press + or - to adjust your speaker's volume.  
**Note:** Make sure that your connected device's volume is set to at least 50%.
- 4 Use the controls on your connected device to control playback.

## RESETTING YOUR SPEAKER

To reset your speaker, use a proper tool to press **RESET**.

**Note:** Resetting your speaker eliminates all previous Bluetooth devices from memory.

## SPECIFICATIONS

**Dimensions (H × W × D):** 2.9 × 4.8 × 2.0 in.  
(7.35 × 12.2 × 5.2 cm)

**USB charging cable:** 20 in. (50 cm)

**Net weight:** .5 lbs. (227 g)

**Gross weight:** .69 lbs. (314 g)

**Charging current:** 5V 1A

## TROUBLESHOOTING

### No power

- Make sure that your speaker is plugged in.
- Make sure that your speaker is turned on.

### No sound or low volume

- Make sure that your Bluetooth device is turned on, Bluetooth is turned on, and **Insignia Mini Sonic** is selected.
- Turn up the volume on your speaker.
- Turn up the volume on your Bluetooth device.

- Make sure that your Bluetooth device is not muted.
- Make sure that your speaker is not paired to another Bluetooth device.
- Make sure that your Bluetooth device is not paired to another Bluetooth device.

### Cannot establish Bluetooth connection

- Shorten the distance between your speaker and your Bluetooth device.
- Turn your devices off, then on. Re-pair your speaker and your Bluetooth device.
- Make sure that there is nothing plugged into the AUX jack.
- Make sure that your speaker is not paired to another Bluetooth device.
- Make sure that your speaker and Bluetooth device are both in pairing mode.
- Make sure that your Bluetooth device supports Bluetooth v4.0 and below.
- Make sure that your Bluetooth device is not connected to any other device.
- Make sure that you have selected **Insignia Mini Sonic** on your Bluetooth device.
- If a passcode is needed, enter **0000**.

### My Bluetooth device keeps unpairing

- Shorten the distance between your speaker and your Bluetooth device.
- If the battery on your Bluetooth device is low, recharge the battery.

### "Insignia Mini Sonic" does not appear on my Bluetooth device

- Shorten the distance between your speaker and your Bluetooth device.
- Put your speaker into pairing mode, then refresh your list of Bluetooth devices. For more information, see the documentation that came with your Bluetooth device.

### Sound is distorted

- Adjust the volume to the ¼ or ½ level.
- Adjust the volume settings on the output device (computer or portable audio source).
- Make sure that all connections are correct and secure.

### Can my speaker connect to a TV, monitor, or DVD player?

- Yes, if the device has a Bluetooth or an AUX connection.

### Can my speaker be connected to more than one device (3.5mm and Bluetooth)?

- No. Only one sound source can be used at a time. The mode priority is AUX, then Bluetooth.

### Does my speaker work with smart home devices?

- Yes, your speaker works with any Bluetooth device.

## LEGAL NOTICES

### FCC Information

This device complies with Part 15 of the FCC Rules. Operation is subject to the following two conditions: (1) this device may not cause harmful interference and (2) this device must accept any interference received, including interference that may cause undesired operation.

### FCC Caution

Changes or modifications not expressly approved by the party responsible for compliance could void the user's authority to operate this equipment.

**Note:** This equipment has been tested and found to comply with the limits for a Class B digital device, pursuant to Part 15 of the FCC Rules. These limits are designed to provide reasonable protection against harmful interference in a residential installation. This equipment generates, uses and can radiate radio frequency energy and, if not installed and used in accordance with the instructions, maybe cause harmful interference to radio communications. However, there is no guarantee that interference will not occur in a particular installation. If this equipment does cause harmful interference to radio or television reception, which can be determined by turning the equipment off and on, the user is encouraged to try to correct the interference by one or more of the following measures:

- Reorient or relocate the receiving antenna.
- Increase the separation between the equipment and receiver.
- Connect the equipment into an outlet on a circuit different from that to which the receiver is connected.
- Consult the dealer or an experienced radio/TV technician for help.

This equipment complies with FCC and Industry Canada radiation exposure limits set forth for an uncontrolled environment.

### Industry Canada Compliance IC Statement

This device complies with Industry Canada's licence-exempt RSSs. Operation is subject to the following two conditions:

- (1) This device may not cause interference; and
- (2) This device must accept any interference, including interference that may cause undesired operation of the device.

### Conformité à Industrie Canada Déclaration d'IC

Le présent appareil est conforme aux CNR d'Industrie Canada applicables aux appareils radio exempts de licence. L'exploitation est autorisée aux deux conditions suivantes :

- (1) l'appareil ne doit pas produire de brouillage, et
- (2) l'utilisateur de l'appareil doit accepter tout brouillage radioélectrique subi, même si le brouillage est susceptible d'en compromettre le fonctionnement.

Cet équipement est conforme aux limites d'exposition aux rayonnements de la FCC et du Canada établies pour un environnement non contrôlé.

### IFETEL Statement

La operación de este equipo está sujeta a las siguientes dos condiciones: 1. es posible que este equipo o dispositivo no cause interferencia perjudicial y 2. este equipo debe aceptar cualquier interferencia, incluyendo la que pueda causar su propia operación no deseada.

### ICES-003

This Class B digital apparatus complies with Canadian ICES-003; Cet appareil numérique de la classe B est conforme à la norme NMB-003 du Canada.

## ONE-YEAR LIMITED WARRANTY

Visit [www.insigniaproducts.com](http://www.insigniaproducts.com) for details.

## CONTACT INSIGNIA:

For customer service, call 1-877-467-4289 (U.S. and Canada) or 01-800-926-3000 (Mexico)  
[www.insigniaproducts.com](http://www.insigniaproducts.com)

INSIGNIA is a trademark of Best Buy and its affiliated companies  
Distributed by Best Buy Purchasing, LLC  
7601 Penn Ave South, Richfield, MN 55423 U.S.A.  
©2019 Best Buy. All rights reserved  
**Made in China**