

Hisense

Quick Start Guide

2.1CH Soundbar with Wireless Subwoofer

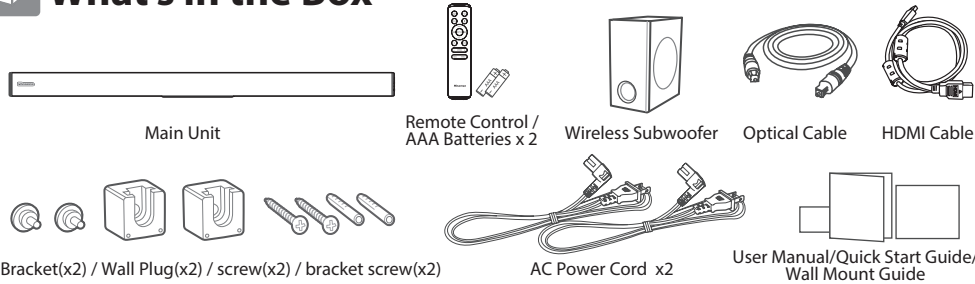
Model: HS218



- ✓ Simple setup
- ✓ One remote
- ✓ Quick settings

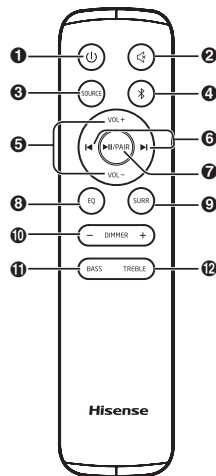


What's in the Box



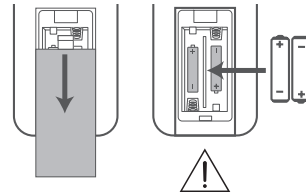
1 Remote control

- ⏻** Switch the unit between ON and STANDBY mode.
- MUTE** Mute or resume the sound.
- SOURCE** Select the play function.
- BT** Select the Bluetooth mode.
- VOL+/VOL-** Increase/decrease the volume level.
- ⏮/⏭** Skip to previous/next track in Bluetooth/USB mode.
- ▶/⏸/⏪/⏩** Play/pause/resume playback in Bluetooth/USB mode.
Press and hold to activate the pairing function in Bluetooth mode or disconnect the existing paired Bluetooth device.
- EQ** Select a preset sound effect.
- SURR** Adjust the surround ON/OFF.
- DIMMER+/-** Adjust display brightness.
- BASS** Press to activate the bass setup.
- TREBLE** Press to activate the treble setup.



Replace the Remote Control Battery

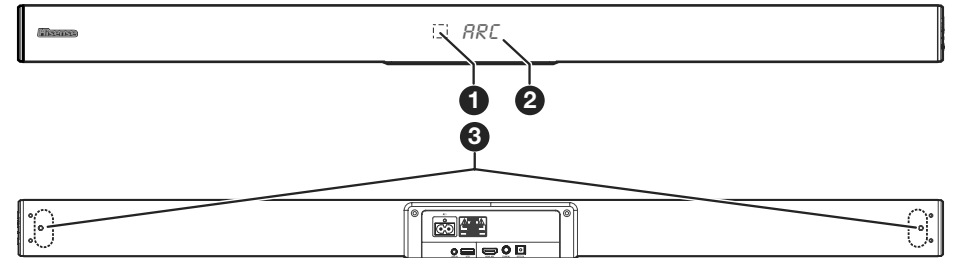
- Press and slide the back cover to open the battery compartment of the remote control.
- Insert two AAA size batteries (included). Make sure the (+) and (-) ends of the batteries match the (+) and (-) ends indicated in the battery compartment.
- Close the battery compartment cover.



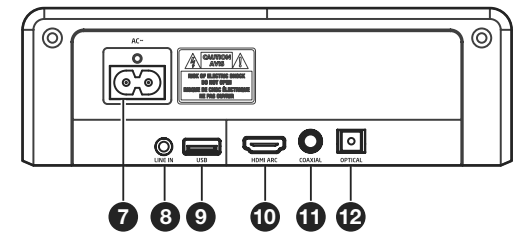
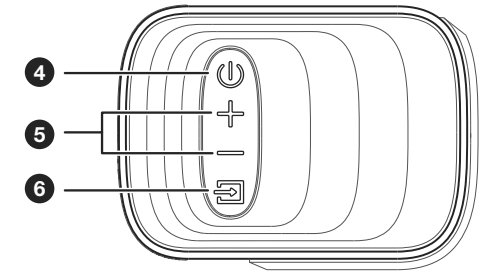
- Do not mix old and new batteries;
- Do not mix alkaline, standard (Carbon-Zinc) or rechargeable (Ni-Cd, Ni-MH, etc.) batteries.

2 Identifying the Parts

Main Unit

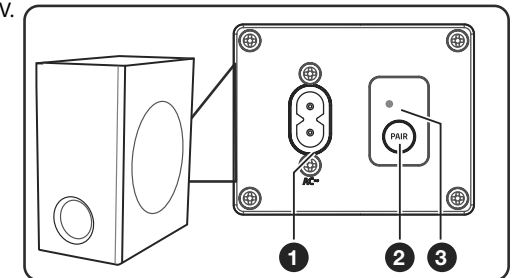


- Remote Control Sensor**
Receive signal from the remote control.
- Display Window**
Show the current status.
- Screws**
Remove the screws then install the wall mounting screws into the back of the unit.
- ⏻ (ON/OFF) Button**
Switch the unit between ON and Standby mode.
- +/- (Vol+/Vol-) Buttons**
Increase/decrease the volume level.
- ☰ (SOURCE) Button**
Select the play function.
- AC~ Socket**
Connect to the power supply.
- LINE IN Socket**
Connect to an external audio device.
- USB Socket**
Insert the USB device to play music.
- HDMI ARC Socket**
Connect to a TV via HDMI cable.
- COAXIAL Socket**
Connect to a coaxial audio output on the TV.
- OPTICAL Socket**
Connect to an optical audio output on the TV.

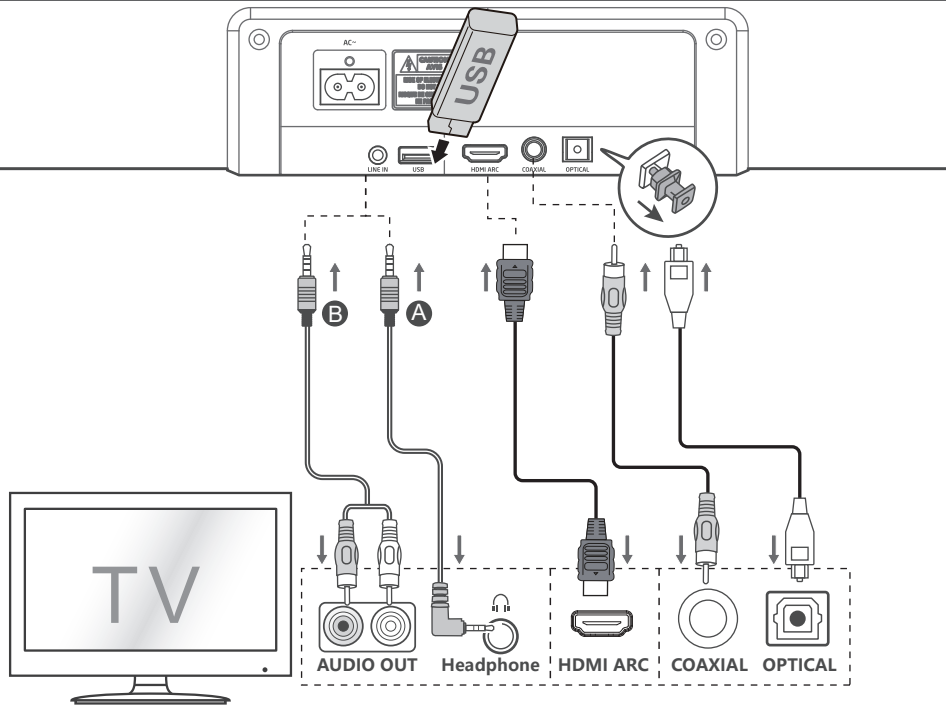


Wireless Subwoofer

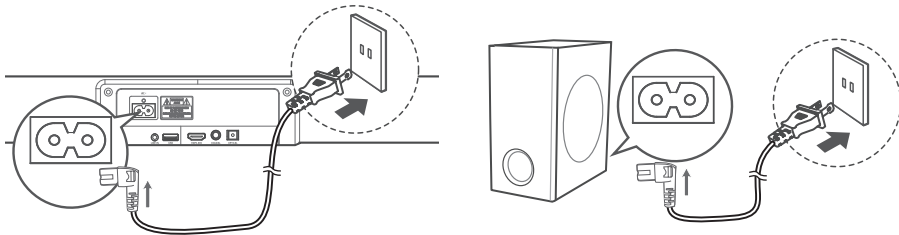
- AC~ Socket**
Connect to power supply.
- PAIR Button**
Press activate the pairing function between the main unit and the subwoofer.
- PAIR Indicator**
Light up solidly when the pairing succeed.



3 Connections

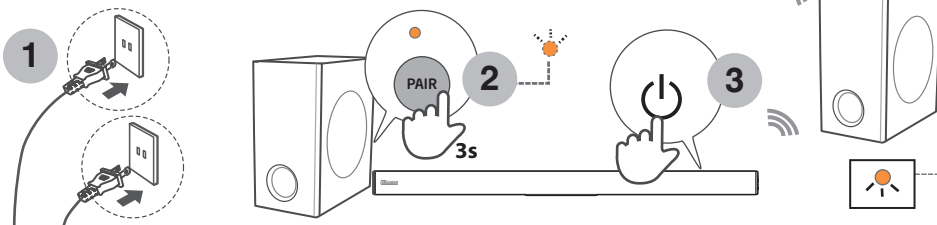


• Before connecting the AC power cord, ensure you have completed all other connections.



Pair up with the subwoofer

The subwoofer and the soundbar will be paired automatically when both are powered on. If no audio from the wireless subwoofer can be heard, manually pair up the subwoofer.



4 Basic Operation

Standby/ON

When you first connect the main unit to the mains socket, the main unit will be in Standby mode.

- Press the **⏻** button on the unit or on the remote control to switch the unit ON.
- Press the **⏻** button again to switch the unit back to STANDBY mode.
- Disconnect the mains plug from the mains socket if you want to switch the unit OFF completely.

Auto Wake

If a TV or an external device is connected (LINE IN / OPTICAL / COAXIAL / HDMI ARC), the unit will switch on automatically when the TV or the external device is switched on.

Automatic Power Off Function

The unit automatically turns to Standby mode after about 15 minutes if the TV or the external unit is disconnected, switched off.

Select Modes

Press the **⏻** (SOURCE) button repeatedly on the unit or the SOURCE button on the remote control to select the LINE IN, OPTICAL, COAXIAL, HDMI ARC, USB and BT (Bluetooth) mode. The selected mode will show on the display.

Adjust the Bass/Treble Level

- Press TREBLE then press VOL+/- button to increase or decrease the treble. (TREBLE+5 / TREBLE-5)
- Press BASS then press VOL+/- button to increase or decrease the bass. (BASS+5 / BASS-5)
- After about 5 seconds, the unit will exit from bass/treble setting. The display will show the current selected mode. You may now press the VOL+ / - buttons to adjust volume.

Turn the Surround Sound ON/OFF

Press the **SURR** button on the remote control to turn on the surround sound. Press this button again to turn off the surround sound.

Adjust the Volume

Press the **VOL+** / **VOL-** buttons on the unit or on the remote control to adjust the volume.

If you wish to turn the sound off, press the **MUTE** button on the remote control. Press the **MUTE** button again or press the **VOL+** / **VOL-** buttons on the unit or on the remote control to resume normal listening.

Adjust the Brightness

Press the **DIMMER** +/- buttons on the remote control to select brightness level.

Select a Preset Sound Effect

While playing, press the **EQ** button on the remote control to select desired preset equalizers: MOVIE, MUSIC, NEWS.

5 Wall Mounting

