

INSIGNIA™

39" 1080p LED HDTV

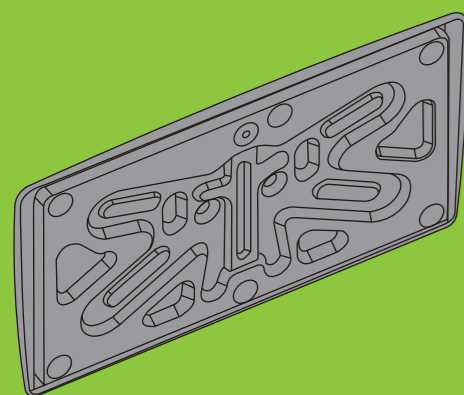
QUICK SETUP GUIDE

NS-39D240A13

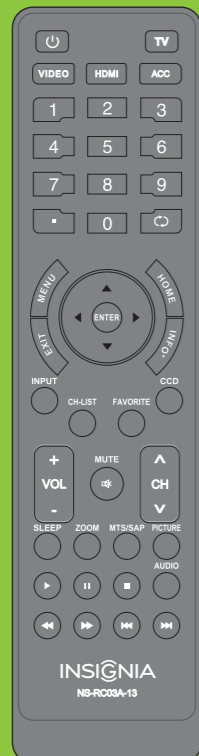
Thank You

for purchasing this fine Insignia television. We hope you enjoy the quality and reliability of this product for years to come.

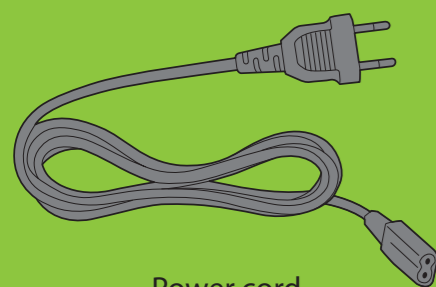
M4 type (10 mm length)



TV stand and 4 screws



Remote control and 2 AAA batteries



Power cord

WE ARE GOING GREEN!

A copy of your *User Guide* is not provided in the box but is available online. Go to www.insigniaproducts.com, click **Support & Service**, enter your model number in the **Product Search** field, then click **Search**.

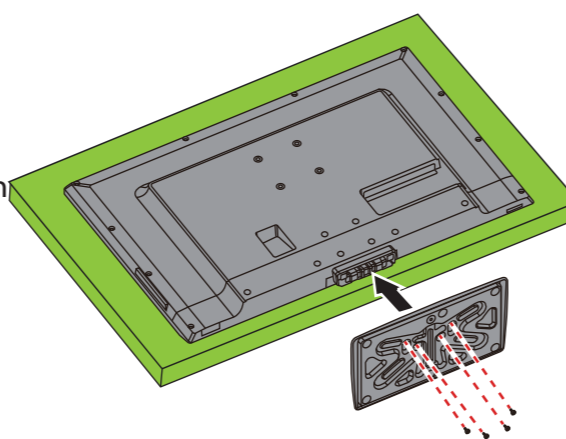


Front features



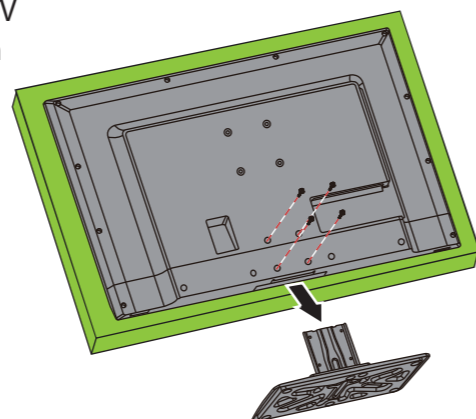
Installing the stand

- Carefully place your TV face-down on a cushioned, clean surface to protect the screen from damages and scratches.
- Secure the stand to the TV with the four provided screws.



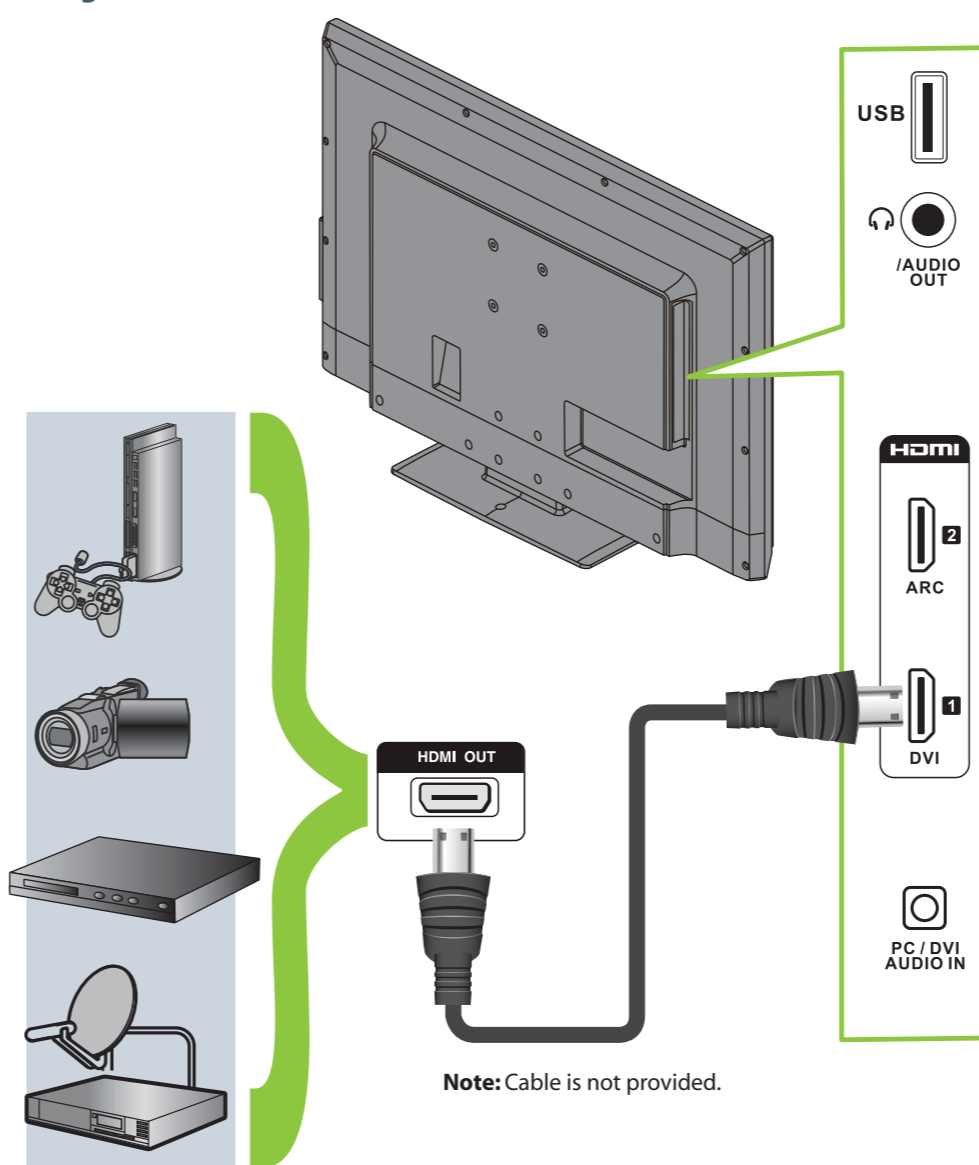
Installing a wall-mount bracket

- Carefully place your TV face-down on a cushioned, clean surface to protect the screen from damages and scratches.
- Remove the four screws on the back of the TV that secure the stand column to the TV, then pull out the stand and stand column.
- Attach the wall-mount bracket to your TV using the mounting holes on the back of your TV. See the instructions that came with the wall-mount bracket for information about how to correctly hang your TV.



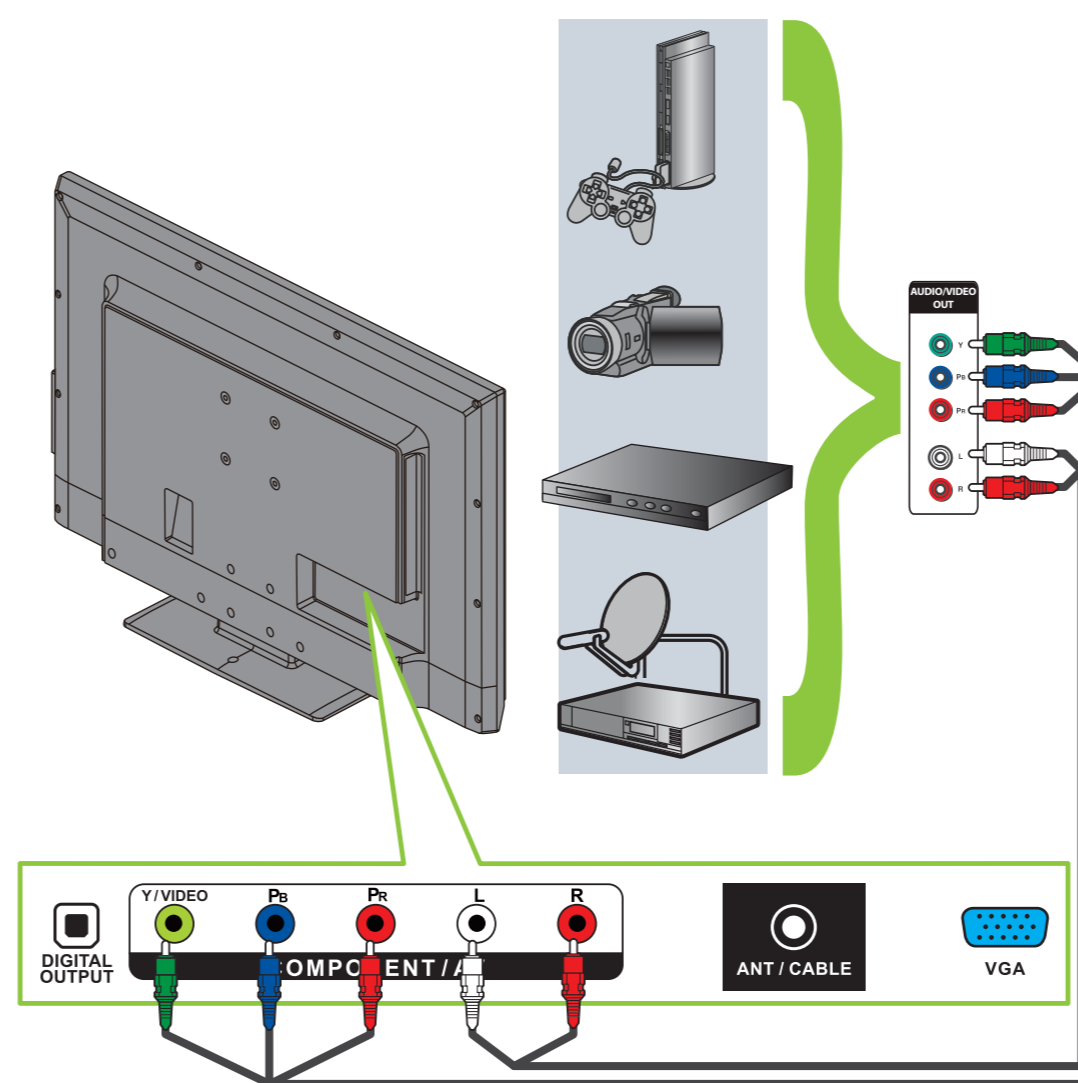
Connecting a DVD or Blu-ray player, cable box, satellite receiver, camcorder, or game station

Using an HDMI cable (best)



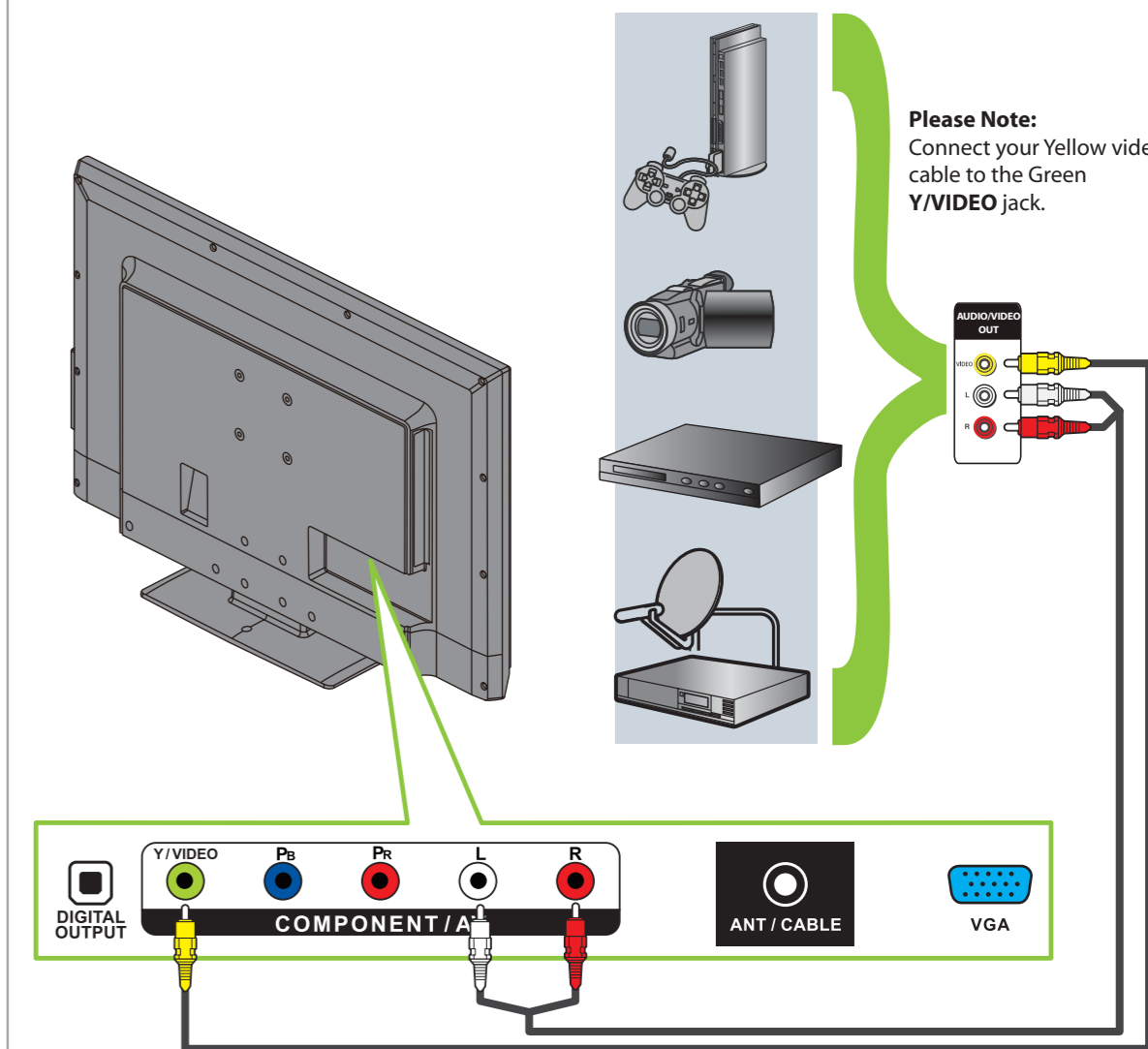
Note: Cable is not provided.

Using component cables (better)



Note: Cable is not provided.

Using composite cables (good)

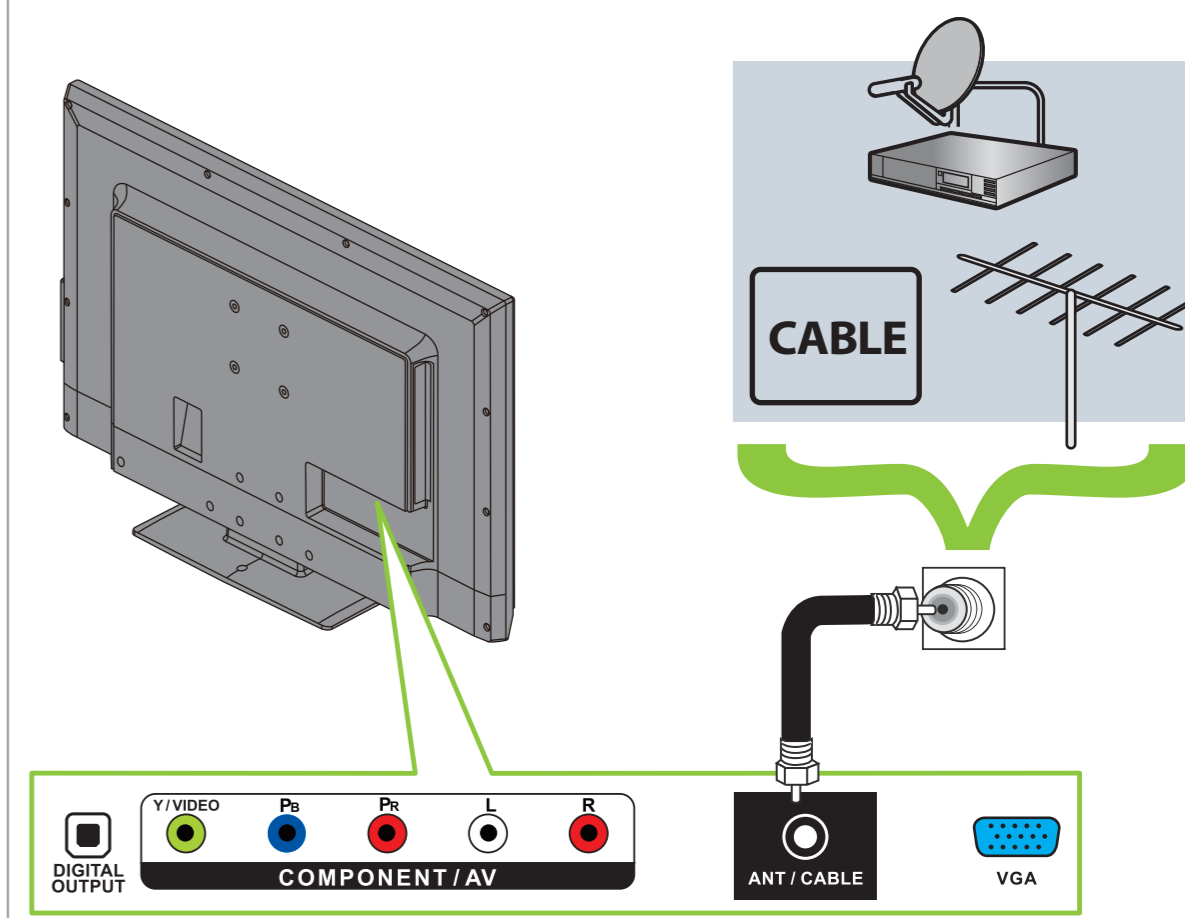


Please Note: Connect your Yellow video cable to the Green Y/VIDEO jack.

Note: Cable is not provided.

Connecting to an antenna/cable wall jack

Connect a coaxial cable (not included) to the ANT/CABLE IN jack on the back of your TV and to the Antenna/Cable wall jack.



Note: Cable is not provided.

Warning

This apparatus is intended to be supported by a UL Listed wall mount bracket.

Identifying cables

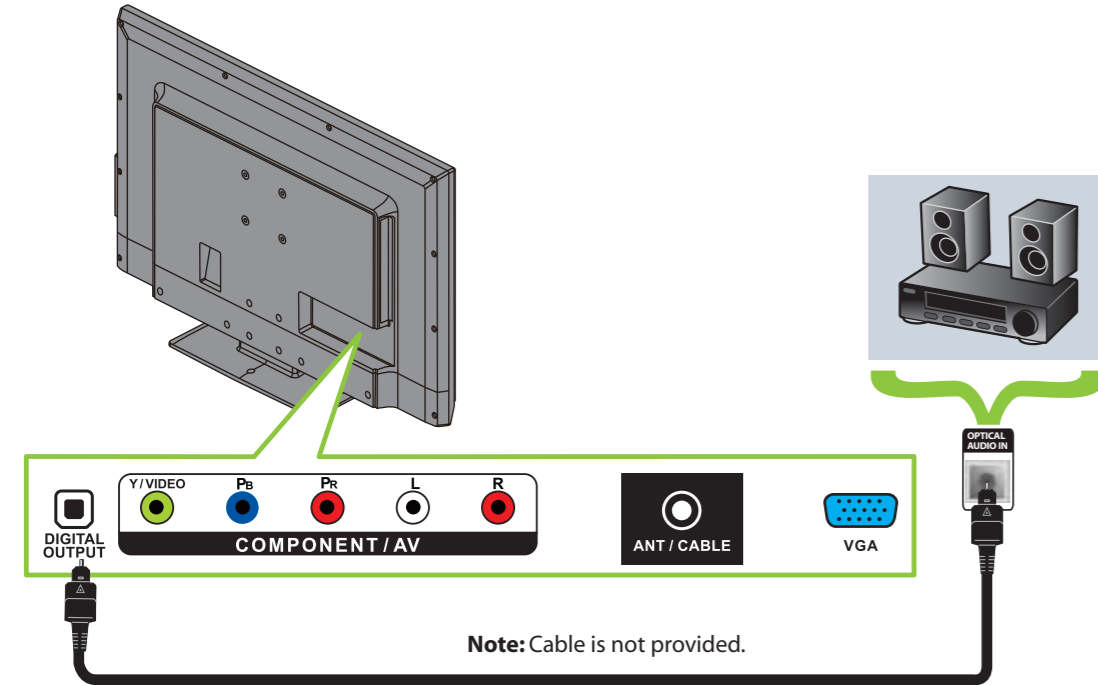
Your TV has several connection types for connecting devices. For the best video quality, connect a device to the best available connection.

Connection type	Video quality	Cable connector
HDMI video/audio	Best	
OR		
Component video and analog audio	Better	
OR		
Composite video and analog audio	Good	

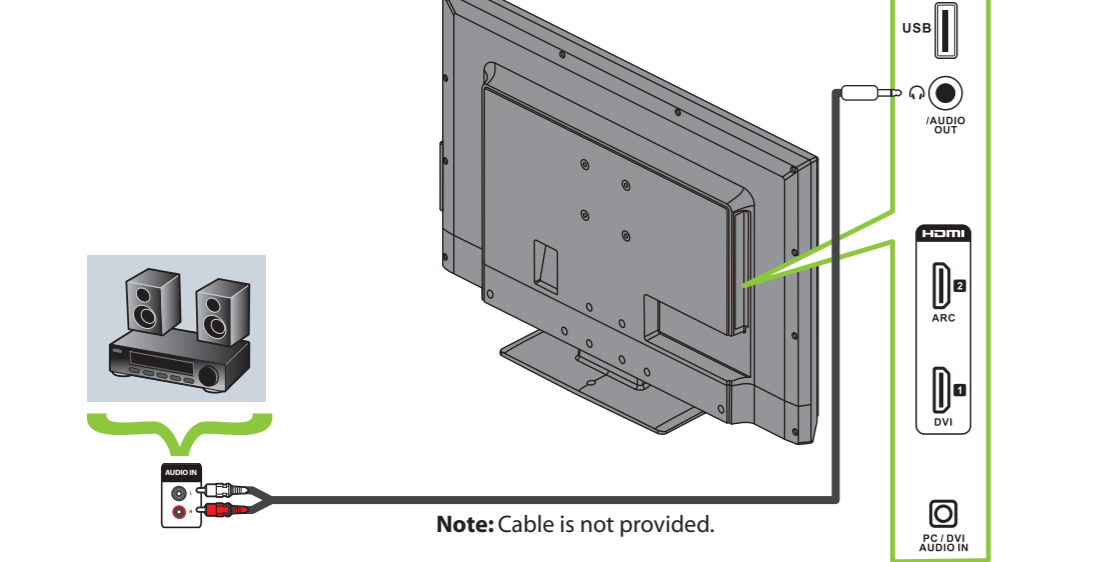
You can use the HDMI 1 / DVI jack to connect a DVI device to your TV. You need to attach an HDMI-to-DVI adapter to the end of the HDMI cable that connects to the DVI device's jack.

Connecting a Home Theater System

Using Digital audio

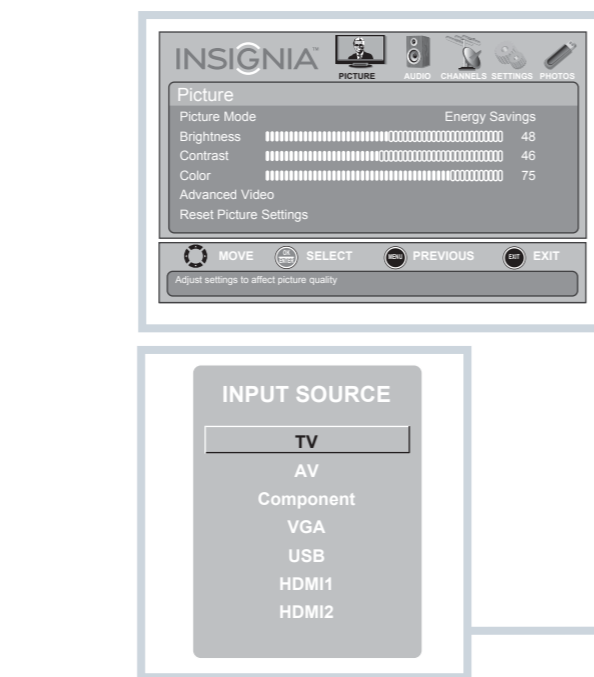
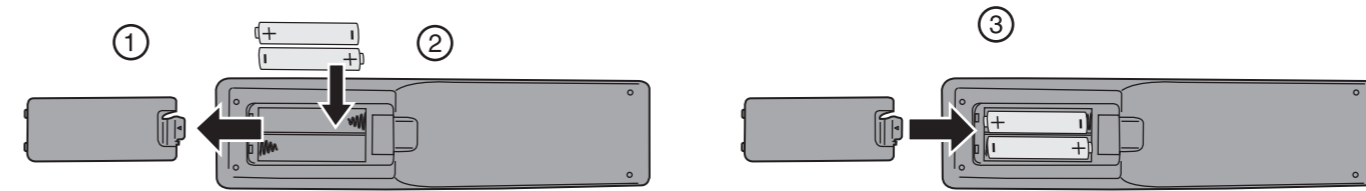


Using Analog audio



Setting up and using your remote control

- 1 Press the release button on the back of the remote control to remove the battery compartment cover.
- 2 Insert two AAA batteries into the battery compartment. Make sure that the + and - symbols on the batteries match the + and - symbols in the battery compartment.
- 3 Replace the cover.



Aspect ratio options

- Normal:** Displays the original 4:3 aspect ratio with vertical black bars on the left and right hand side of the screen.
- Zoom:** Expands the image to fill the screen. The top and bottom of the image may be cropped.
- Wide:** Use this option to view content recorded in a 16:9 (wide-screen) aspect ratio.
- Cinema:** Stretches the image at the edges, but keeps a clear image in the center.
- Auto:** Automatically adjusts the image based on the screen size and the TV program. **Note: Auto** is only available when **Auto Zoom** in the **CHANNELS** menu is set to **On**.

- Power:** Turns your TV on or off.
- Quick Launch Inputs:** Selects another video source connected to your TV.
- Numbers:** Enter channel numbers.
- ENTER:** Confirms selections or changes.
- MENU:** Opens the on-screen menu.
- EXIT:** Closes the on-screen menu.
- INPUT:** Opens the Input Source list.
- CH-LIST:** Opens the channel list.
- Volume:** Changes the volume.
- SLEEP:** Sets the sleep timer.
- ZOOM:** Changes how the picture displays on the screen.
- RECALL:** Returns to the previous channel.
- Arrows:** Navigate in on-screen menus.
- HOME:** Opens the on-screen menu.
- INFO*:** Opens a TV status banner.
- CCD:** Turns closed captioning on or off.
- FAVORITE:** Opens the Favorite Channel List.
- MUTE:** Mutes the sound.
- Channel:** Changes the TV channels.
- PICTURE:** Selects the video modes.
- MTS/SAP:** Cycles through mono, stereo, and secondary audio for analog programs.
- AUDIO:** Selects the audio modes.
- Media Controls:** Control HDMI-CEC devices connected to your TV.

Programming your remote control

To program your universal remote control to work with your new Insignia TV, see the table for common codes. If you have problems programming your remote or need a different remote control code, visit www.insigniaproducts.com for the latest remote control code information.

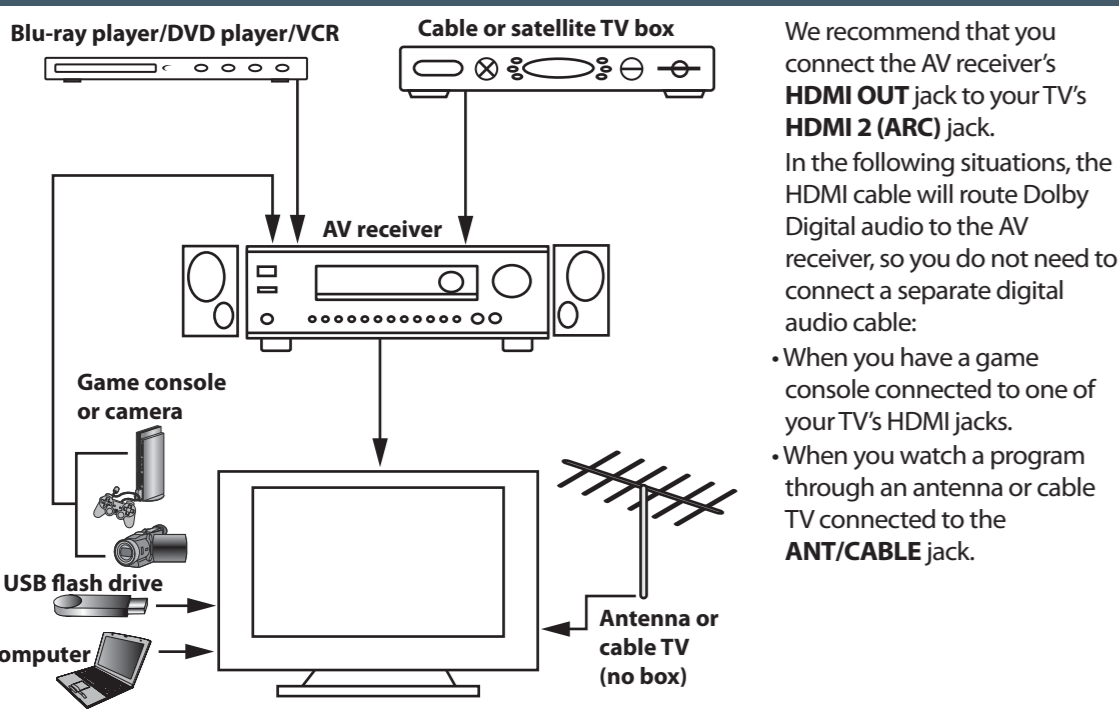
Universal remote TV codes												
Universal remote controls				Cable/Satellite/Set-top box								
Philips	RCA	One for All	Sony	Comcast	DirectTV	Dish Network	Time Warner	Cox	Charter	Verizon	Cablevision	Tivo
0198, 0490	135	0054	068, 069, 078, 096, 100, 164, 168, 229, 026	10171, 11204, 11326, 11517, 11641, 11780, 11892, 11963, 12002	10171, 11204, 11326, 11517, 11641, 11780, 11963, 12002	720	450, 461, 456	1326	2002, 1204, 1423, 1517, 0171, 1963, 0463, 0842, 1326, 167, 415, 424, 450, 456, 461, 507, 523, 567, 577, 586	0198, 0490	068, 069, 078, 096, 100, 164, 168, 229, 026	0091

Turning on your TV for the first time

- 1 Connect your TV's power cord to a power outlet, then press (power). The *Choose Your Menu Language* screen opens.
- 2 Press ▲ or ▼ to highlight a language, then press ENTER. The *Choose your Time Settings* screen opens with **Mode** highlighted.
- 3 Press ◀ or ▶ to select **Auto** or **Manual**, then press ENTER. If you select **Auto**, the date and time are set automatically from a digital TV signal. If you select **Manual**, you can manually set the date and time. Press ENTER.
- 4 Press ▲ or ▼ to highlight **Home Mode** or **Retail Mode**, then press ENTER. If you select **Retail Mode**, a message asks you to confirm your selection. Select **Yes** or **No**. Retail mode is not an energy-saving mode.
- 5 Press ▲ or ▼ to highlight **Antenna**, **Cable**, or **Satellite Box**, then press ENTER.
 - A. If you select **Antenna**, your TV scans for available channels. The scan may take several minutes.
 - B. If you select **Cable**, a message asks if you have a cable box.
 - Select **No** if no cable box is connected. Your TV scans for available channels. The scan may take several minutes.
 - Select **Yes** if a cable box is connected. A message asks how you connected the cable box to your TV:
 - Select **AV**, **Component**, or **HDMI** if you connected a cable box to your TV using one of these cables. Read the message, then press ENTER to close the wizard.
 - Select **Coaxial** if you connected a cable box to your TV using a coaxial cable. Read the message, then press ENTER to start the channel scan (VHF channels only).
 - C. If you select **Satellite Box**, a message asks how you connected the satellite box to your TV:
 - Select **AV**, **Component**, or **HDMI** if you connected a satellite box to your TV using one of these cables. Read the message, then press ENTER to close the wizard.
 - Select **Coaxial** if you connected a satellite box to your TV using a coaxial cable. Read the message, then press ENTER to start the channel scan (VHF channels only).

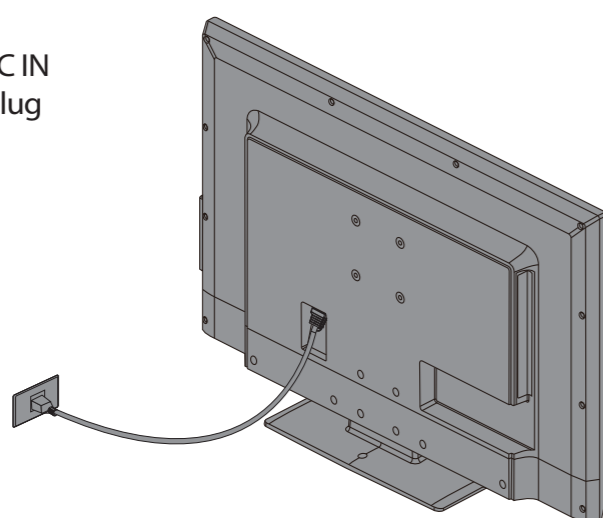


Connecting a home theater system with multiple devices



Connecting power

Plug the AC power cord into the AC IN jack on the back of your TV, then plug the other end of the cord into a power outlet.



One-year limited warranty

See your online *User Guide* or visit www.insigniaproducts.com for details.

Need additional help?

See your online *User Guide*. This comprehensive guide includes everything from basic how-to steps to more advanced features. Check out our **online community forum** at www.insigniaproducts.com for helpful information from other Insignia TV owners.

We're here for you

www.insigniaproducts.com
For customer service, call:
877-467-4289 (U.S./Canada markets)

Distributed by Best Buy Purchasing, LLC
7601 Penn Avenue South, Richfield, MN USA
55423-3645

© 2012 BBY Solutions, Inc.
All rights reserved. INSIGNIA is a trademark of BBY Solutions, Inc. Registered in some countries. All other products and brand names are trademarks of their respective owners.

WE ARE GOING GREEN!

A copy of your *User Guide* is not provided in the box but is available online. Go to www.insigniaproducts.com, click **Support & Service**, enter your model number in the **Product Search** field, then click **Search**.

