

Ozeri

Rev™ Digital Bath Scale with Electro-Mechanical Dial

User Manual

Model: ZB19 / ZB19-W / ZB19-T

Product image and Model # will vary by color



Ozeri[®]

Rev[™] Digital Bath Scale with Electro-Mechanical Dial

User Manual

Model: ZB19 / ZB19-W / ZB19-T

Product image and Model # will vary by color

Congratulations

Congratulations on your purchase of the Ozeri Rev™ Digital Bath Scale with Electro-Mechanical Dial. Please read through this manual before first using your new scale, and keep this manual handy for future reference.

Warnings

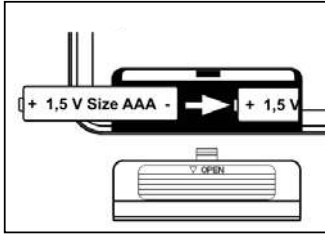
- Your Ozeri Rev™ Digital Bath Scale with Electro-Mechanical Dial is a finely tuned electronic instrument. One of the hardest things to weigh is the human body because there is always subtle in motion. To ensure reliable readings, always try to place your feet on the scale in the same place each time and remain still.
- Your scale will auto-calibrate once when the batteries are changed and after each time the scale detects it has been moved. As part of this calibration process, please disregard the first weight reading, step off the scale and allow it to turn off. This will complete the calibration process.
- Note that your body weight will vary based on hydration, clothing, and other factors. This scale rounds to the nearest 50 grams. When slight variances occur, it is recommended to average your weight over time.
- Treat your scale with care. Do not drop it or jump on it. While the scale is made out of durable materials, misuse or abuse may render the electronic sensors inoperable.
- The maximum weight capacity of this scale is 400 lbs / 180 kg. To avoid permanent damage, do not attempt to exceed the weight limit and do not store any items on this scale when not in use.
- Do not disassemble this product. Other than replacing the batteries, it contains no user serviceable parts.

- The product is intended for home / consumer use only.
- Always ensure the glass platform of the scale is dry before stepping onto it. Never step on the scale with wet feet.
- Clean after use with a lightly dampened cloth. Do not use solvents or immerse the product in water. Thoroughly dry the scale after cleaning. Moisture can damage the scale's sensors and electronics.
- Do not use the scale on a carpet or uneven surface.
- Do not store the scale where you store cleaning chemicals. The vapors from some household products may affect the electronic components of your scale. Do not store the scale on its side.
- Store your scale in a clean, dry location at room temperature. Dust, dirt, and moisture from humidity can accumulate on the weighing sensors and electronics, causing inaccuracy or malfunction.
- To prevent battery drainage, do not store anything on the scale.
- Do not dispose of batteries in fire. Batteries may explode or leak.
- Remove the batteries if the scale will not be used for an extended period of time.

Specifications

- Tempered Glass Platform: 15.74" x 12.40"
- Dual Display (Digital LCD and Electro-Mechanical Dial)
- Weight Units: lbs/kg
- Maximum Capacity: 400 lbs / 180 kg
- Minimum Weight Capacity: 11 lbs / 5 kg
- Weight Graduation: 0.1 lbs / 0.05 kg
- Power Supply: 3 AAA batteries (included)
- Low Battery Indicator: "Lo"
- Auto On/Off: Powers on when you step on the scale; powers off after 15 seconds of inactivity.
- Daily Reminder Alarm: reminds you to measure and track your weight every 24 hours
- Equipped with 4 high precision sensors.

Batteries

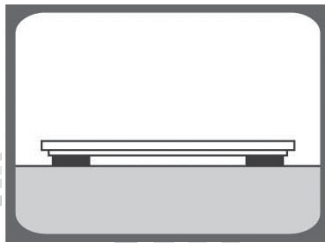


Slide the included 3 AAA batteries into the battery compartment located underneath the scale. Ensure +/- terminals are correctly oriented. When replacing the batteries, please use a small tool to help remove the battery from the battery compartment if necessary.

After inserting the batteries, place the scale on a level surface. The scale's LCD will activate and remain on for 5 seconds and then turn off. Follow the instructions below on first-time calibration.

Using the Scale

Note: Your scale will auto-calibrate once when the batteries are changed and after each time the scale detects it has been moved. As part of this calibration process, please disregard the first weight, step off the scale and allow it to turn off. This will conclude the calibration process.

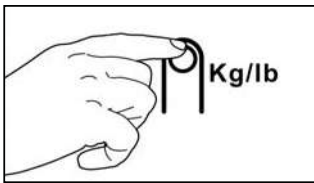


- Once calibrated, place your scale on an even hard flat surface. Do not use your scale on carpets or soft uneven surfaces. Ensure your scale is dry prior to use. **WARNING: NEVER** step onto a wet scale and always ensure solid footing to avoid injury.



- Step onto the scale. Your scale features StepOn™ technology that requires no tapping to activate the scale. One or more weight readings will display on the screen while your scale quickly calculates your weight. When complete, your final weight calculation will flash 3 times and remain on the screen.
- If you remain standing on the scale after a measurement, the scale will display the weight for 15 seconds before turning off. If you step off the scale immediately after a measurement, the scale will automatically turn off after 7 seconds to conserve battery power.

Unit of Measurement



Your scale is set to calculate weights in pounds (lbs.). To change the unit of measurement between pounds and kilograms, simply use the Unit switch located underneath the scale.

Daily Reminder Alarm



This scale features a daily reminder alarm that you can set to remind you to measure your weight at the same time every 24 hrs. To activate the reminder alarm, press the "24H/Alarm" button underneath the scale.

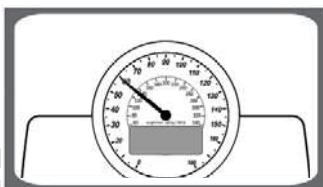
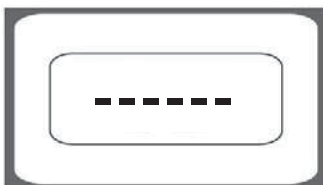
The LCD will display an Alarm icon (🕒) indicating that the alarm has been programmed to sound at the exact same time every 24 hours.

When the alarm activates with its beeping sound, step on the scale to measure your weight. The alarm will deactivate as soon as you step on the scale. If you do not step on the scale, the alarm will sound for 20 seconds.

To deactivate the alarm, simply press the "24H/Alarm" button underneath the scale. The alarm icon will no longer display on the LCD.

Troubleshooting Guide

If you experience any difficulties with your scale, please ensure the following:



- Double check that the batteries are correctly inserted according to their +/- polarity.
- Ensure the scale is on a flat, level floor and not touching a wall or other object.
- If the Low Battery Indicator appears on the screen (Lo), replace batteries with 3 new AAA batteries of the same type.
- If the "-----" appears on the screen, the maximum weight of 400 lbs has been exceeded.
- If the electro-mechanical dial does not return to zero, remove and insert the batteries to reset the scale. Follow the instructions under the Batteries section.

WARRANTY INFORMATION

Your product is warranted to the original owner for 1 year from the date of purchase against defects in material and workmanship under normal use and service. Should your product prove defective within 1 year from the date of purchase, return the defective part or unit, freight prepaid along with your receipt and an explanation of the claim to Ozeri. Please pack your product carefully to avoid damage in transit. Under this warranty, Ozeri will repair or replace any parts found to be defective due to manufacturer's defect. This warranty extends only to personal use and does not extend to any product that has been used for commercial use, rental use, or use which is not intended. There are no warranties other than that expressly set forth herein. This warranty is not transferable. Ozeri is not responsible in any way for damages, losses or inconveniences caused by equipment failure due to user negligence, abuse, or use not in accordance with the user guide or any additional safety, use, or warnings included in the product materials. Further, Ozeri is not liable for incidental or consequential damages of any nature resulting from the use of this product and any liability shall not exceed the purchase price of the product.

This Warranty gives you specific legal rights. You may also have other rights which vary from state to state.

THIS WARRANTY DOES NOT APPLY TO THE FOLLOWING:

- Damage due to accident, misuse, abuse, alterations or vandalism.
- Improper or inadequate maintenance.
- Damage in return transit.
- Unsupervised use by children under 18 years of age.

Ozeri Customer Service:

Phone: 1-877-299-1296

Email: support@ozeri.com

(Ozeri® and its subsidiaries assume no liability for damage caused by the use of the product other than for its intended use or as instructed above and in the User Manual.)

Ozeri®