



RAZER HAMMERHEAD HYPERSPEED

MASTER GUIDE

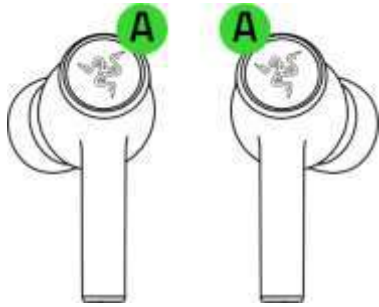
Game in total comfort, no matter where you play with the **Razer Hammerhead HyperSpeed**—a pair of wireless gaming earbuds that provide distraction-free immersion and untethered freedom. With 2.4 GHz gaming grade wireless and Bluetooth 5.2, you'll be able to play anywhere and carry everywhere.

CONTENTS

1. WHAT'S INSIDE	3
2. WHAT'S NEEDED	4
3. LET'S GET YOU COVERED.....	5
4. TECHNICAL SPECIFICATIONS	6
5. SETTING UP YOUR RAZER HAMMERHEAD HYPERSPEED	7
6. USING YOUR EARBUDS.....	14
7. SAFETY AND MAINTENANCE	20
8. LEGALESE.....	21

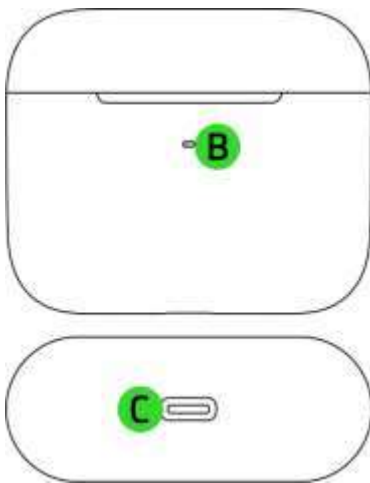
1. WHAT'S INSIDE

- Razer Hammerhead HyperSpeed



- A. Backlit function button Powered by Razer Chroma™ RGB

- Charging case



- B. Status indicator
- C. USB Type C charging port

- USB Type C wireless dongle

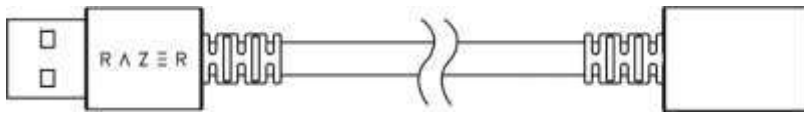


- D. Earbuds mode switch

- USB Type A to USB Type C charging cable



- USB Type A to USB Type C adapter cable



- Silicon ear-tips in 3 sizes (S, M*, L)



**Pre-installed with the earbuds.*

- Important Product Information Guide

2. WHAT'S NEEDED

- Xbox Series X|S and Xbox One
- PS5™, PS4™
- PC, Mac
- Nintendo Switch™
- Devices with Bluetooth audio capability / USB Type C or USB Type A port

SAFETY STATEMENT

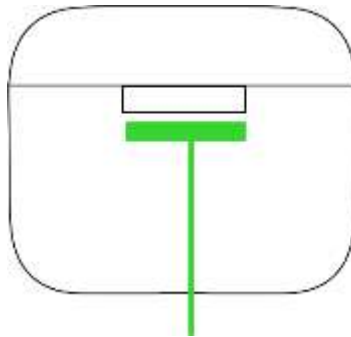
IMPORTANT! Before using your Xbox console with this product, read its instruction manual for safety, health, and other information regarding the use of your Xbox console.

3. LET'S GET YOU COVERED



Register your product and score exclusive benefits

razerid.razer.com/warranty



*Your product's serial
number can be found here.*

4. TECHNICAL SPECIFICATIONS

EARBUDS

- Frequency response: 20 Hz – 20 kHz
- Impedance: 16 Ω
- Sensitivity: 91 dB @ 1 mW / 1 kHz
- Input power: 5 mW (max input)
- Drivers: 10 mm
- Connection type: USB Type C wireless dongle / Bluetooth 5.2

MICROPHONE

- Pick-up pattern: Omnidirectional
- Signal-to-noise ratio: 64 dB
- Sensitivity: -26 dBFS

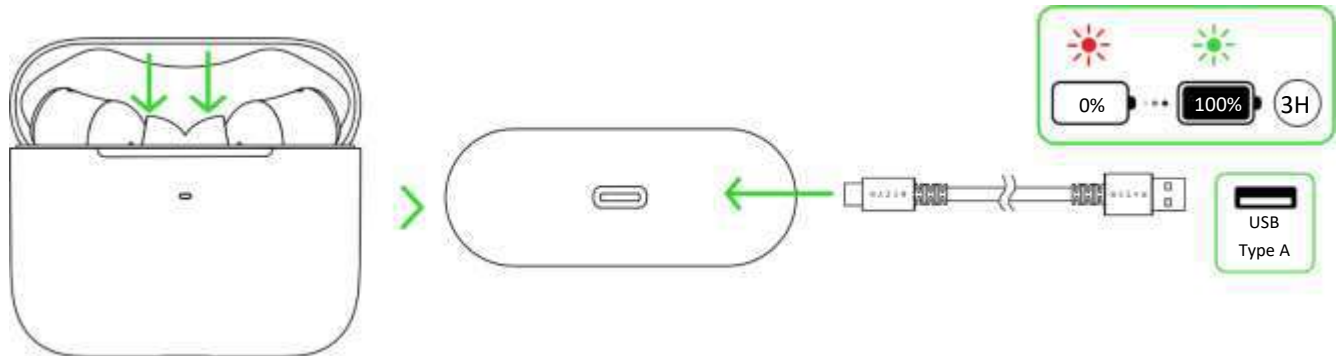
SYSTEM REQUIREMENTS

- Devices with Bluetooth audio capability or USB Type C / USB Type A port
- Smartphone app available for Android and iOS
- Supported codecs: SBC, AAC

5. SETTING UP YOUR RAZER HAMMERHEAD HYPERSPEED

CHARGING YOUR EARBUDS

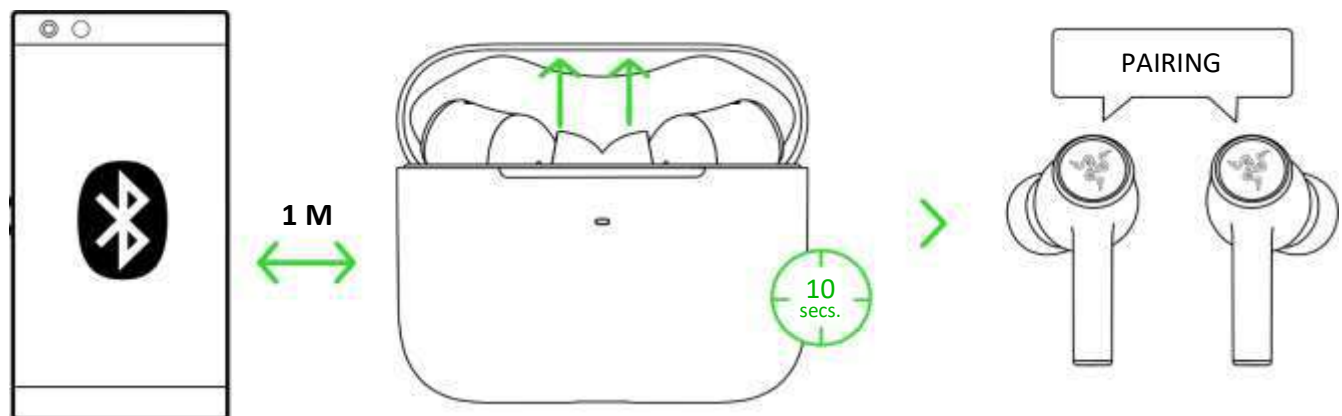
For first-time use, connect the charging case to a USB port using the charging cable without removing the earbuds. For subsequent use, the charging case and the earbuds can be charged independently.



CONNECTING TO YOUR EARBUDS

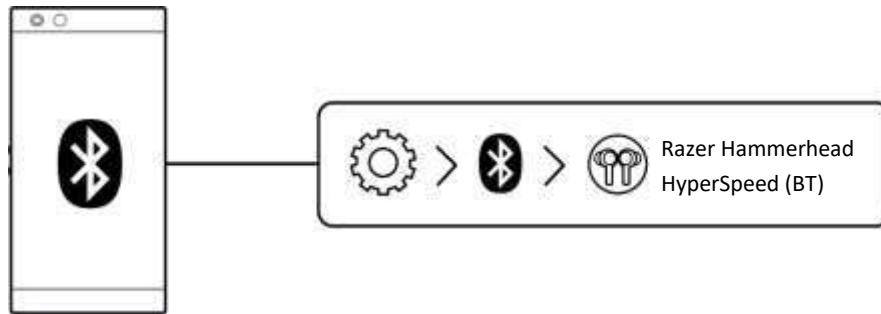
A. Via Bluetooth

1. While inside the charging case, open the lid and wait for the earbuds to enter pairing mode.

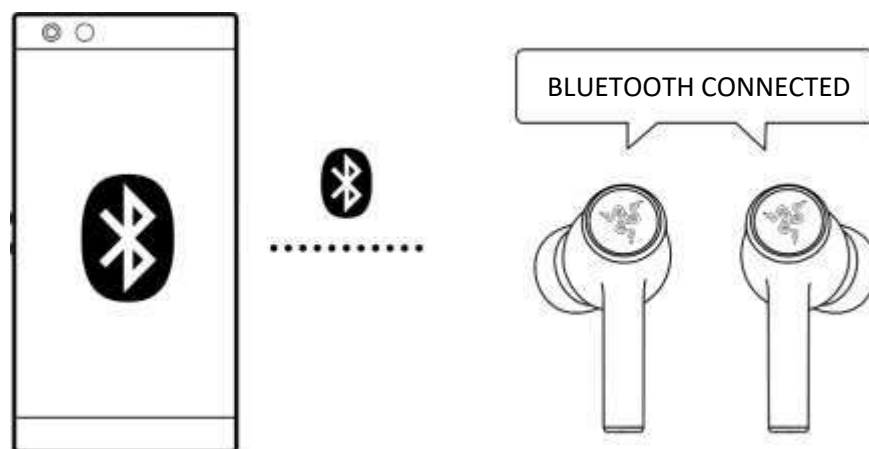


- i** When trying to connect your Razer product, remember to keep it within 1 meter of your mobile device. By default, the earbuds will first search for the USB Type C wireless dongle before activating pairing mode.

2. Activate Bluetooth on your device and select "**Razer Hammerhead HyperSpeed (BT)**" from the list of devices found.



3. Wait until both devices are connected. You will hear an audio prompt when the earbuds have successfully paired and connected to your device.

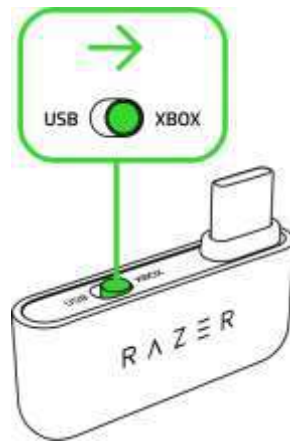


If the earbuds fail to connect to your device, the earbuds will stay in search mode and power off after 3 minutes. If this happens, place the earbuds back inside the charging case and repeat the steps above.

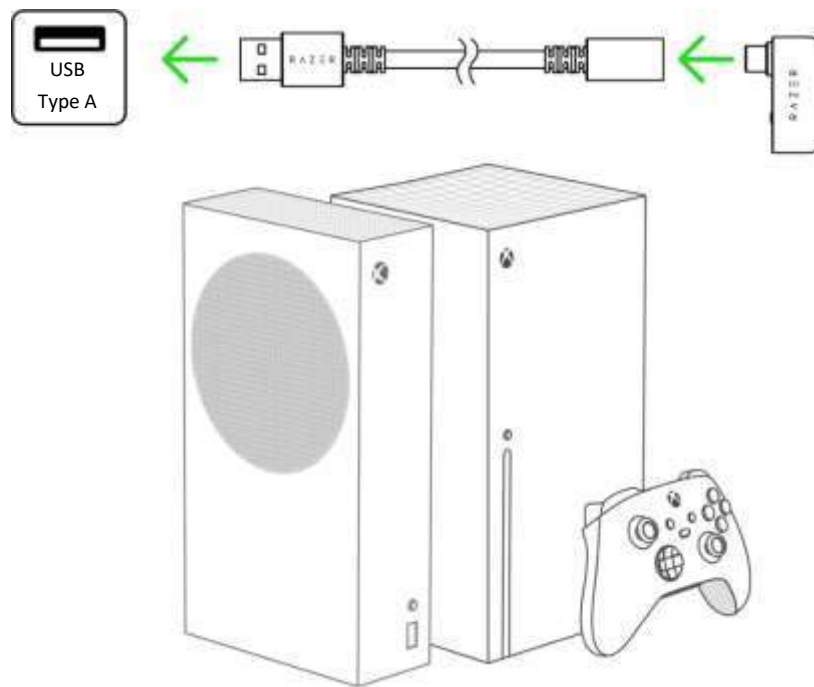
i *Once the earbuds have been paired, they will automatically try to connect to that paired mobile device every time the charging case's lid is opened or the earbuds are powered on. Your earbuds can only connect to one mobile device at a time.*

B. To an Xbox console via the USB Type C wireless dongle (2.4 GHz)

1. Set the Earbuds mode switch on the USB Type C wireless dongle to **XBOX**.

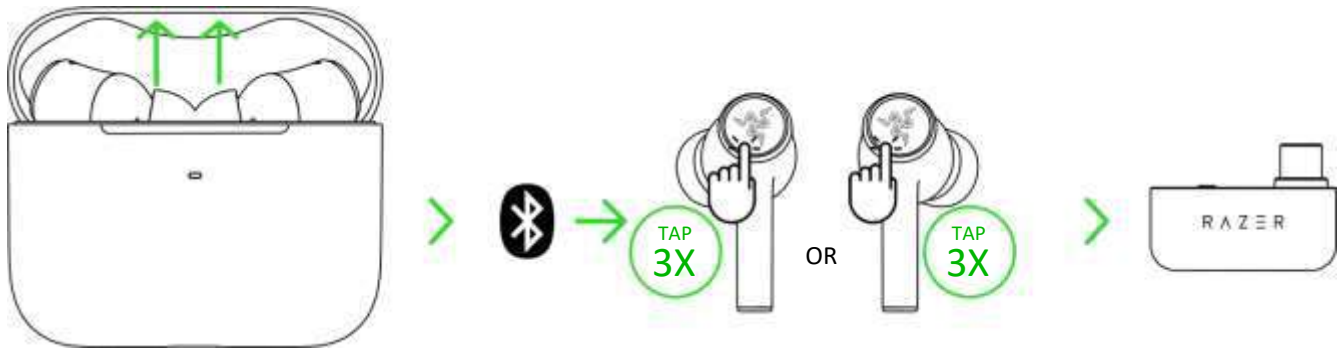


2. Plug the USB Type C wireless dongle into your Xbox console.



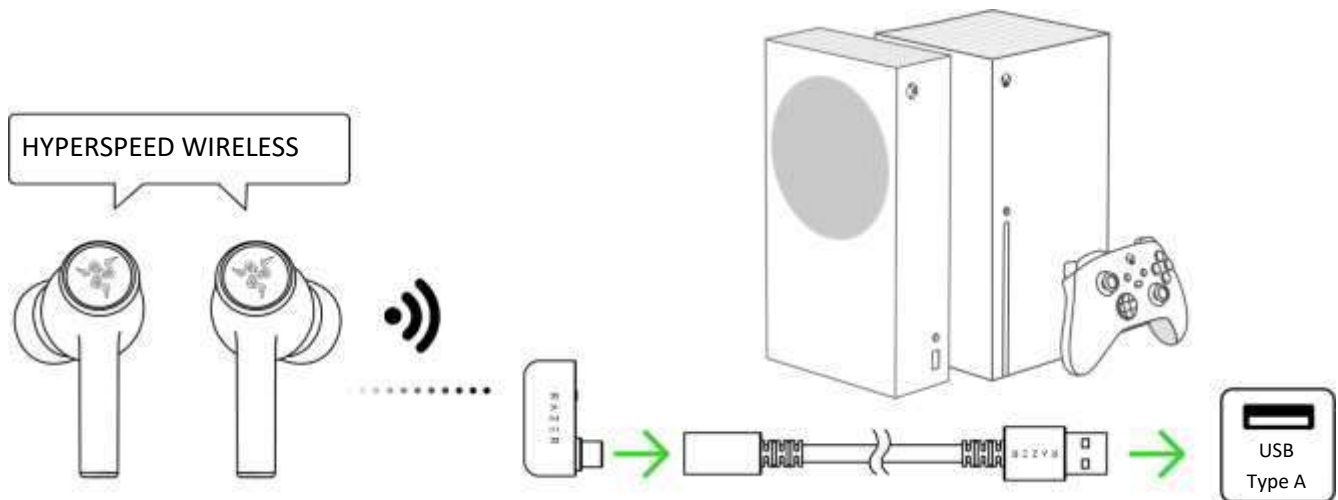
i Always use the USB Type A to USB Type C adapter cable when connecting the USB Type C wireless dongle to an Xbox console. DON'T directly plug it into your Xbox wireless controller's USB-C power port.

3. If your earbuds use Bluetooth as the audio source, triple tap the function button on any earbud to set the USB Type C wireless dongle as the audio source.



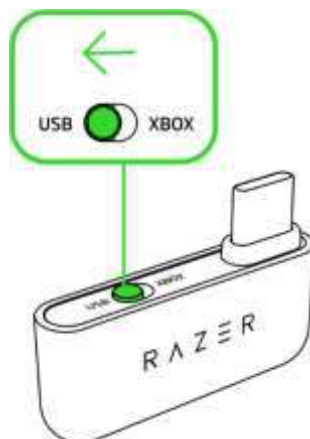
i This step is only applicable if the earbuds are connected to your device via Bluetooth.

4. Wait until your earbuds are connected to the USB Type C wireless dongle.

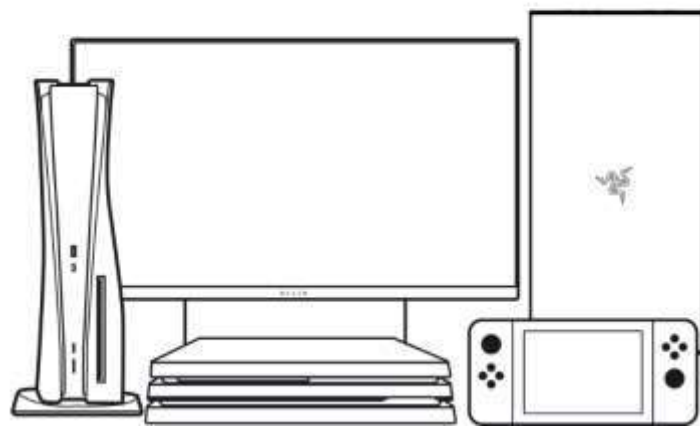
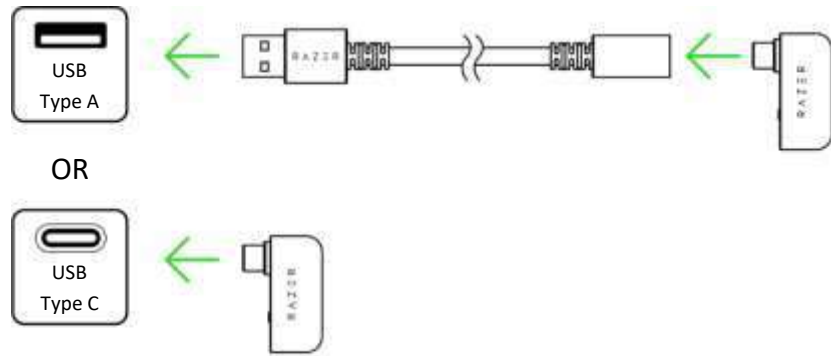


C. To other devices via the USB Type C wireless dongle (2.4 GHz)

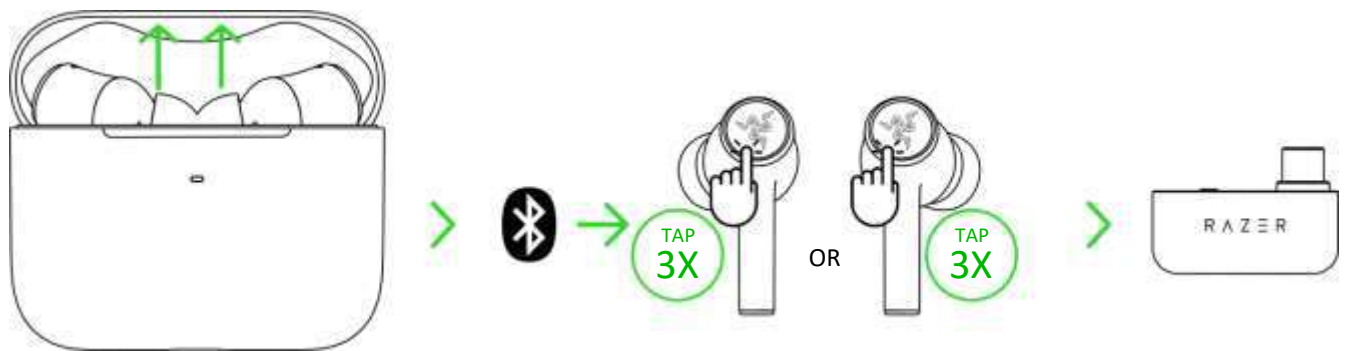
1. Set the Earbuds mode switch on the USB Type C wireless dongle to **USB**.



2. Plug the USB Type C wireless dongle into your device.

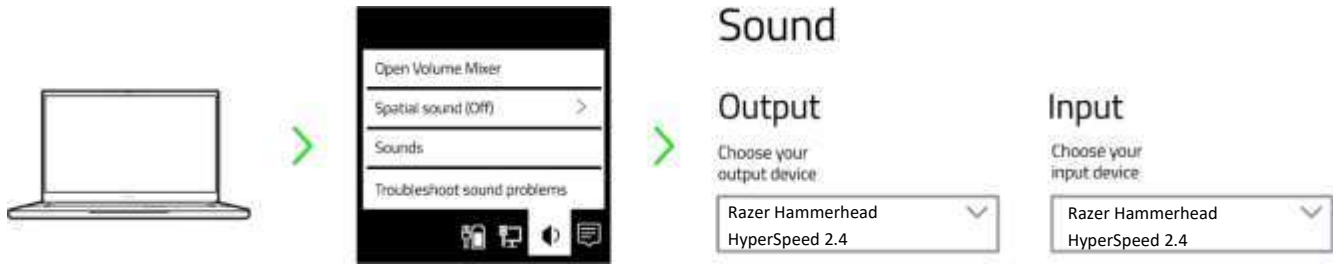


3. If your earbuds use Bluetooth as the audio source, tap the function button thrice on any earbud to set the USB Type C wireless dongle as the audio source.



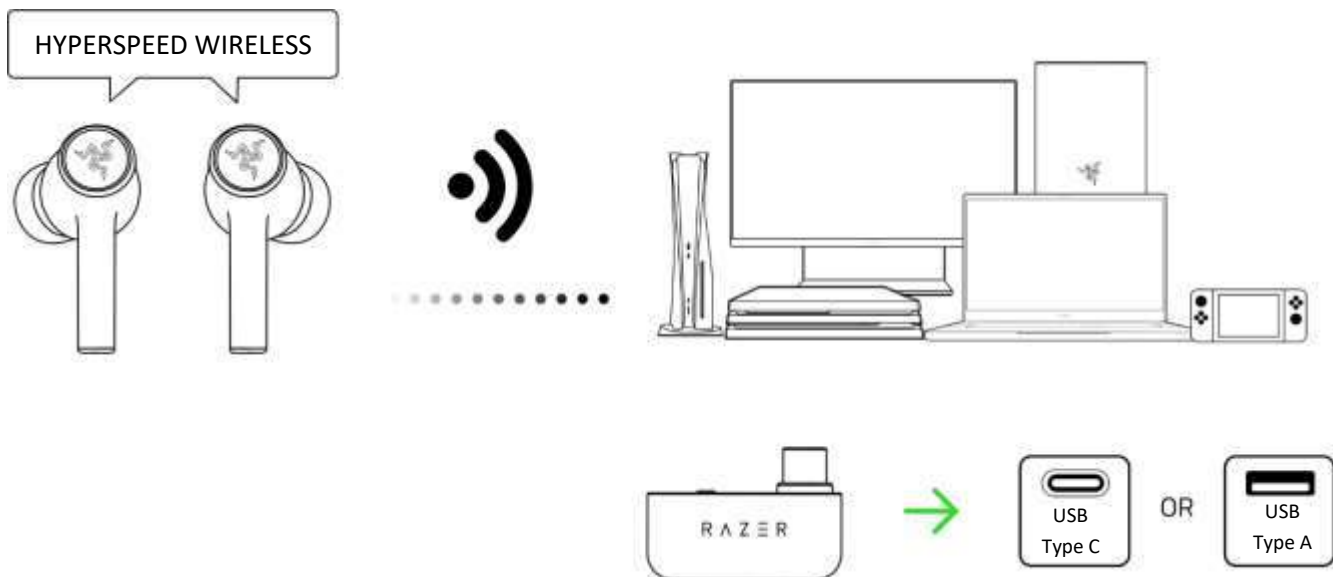
i This step is only applicable if the earbuds are connected to your device via Bluetooth.

4. On your device (if applicable), set the Razer Hammerhead HyperSpeed as the default **Input** and **Output Device**.



i When using the earbuds with compatible devices, set the Razer Hammerhead HyperSpeed 2.4 as the default input and output device (if applicable).

5. Wait until your earbuds are connected to the USB Type C wireless dongle.



PERSONALIZE YOUR EXPERIENCE

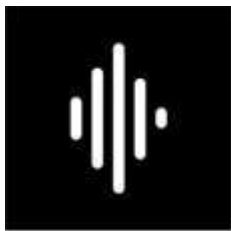
Razer Headset Setup for Xbox App (XBOX / PC)

Personalize your own EQ preset, customize its RGB lighting and ANC levels, and adjust other advanced features for a truly immersive gaming experience from your PC or Xbox console.

**Download and install the Razer Headset Setup for Xbox app from the Microsoft Store on your PC (Windows® 10 64-bit or higher) or Xbox console.*

Razer Audio app (Mobile)

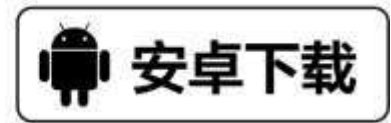
Remap touch gestures, enable Active Noise Cancellation (ANC), customize EQ settings, and even experience full RGB lighting customization from your mobile device.



Razer Audio



OR



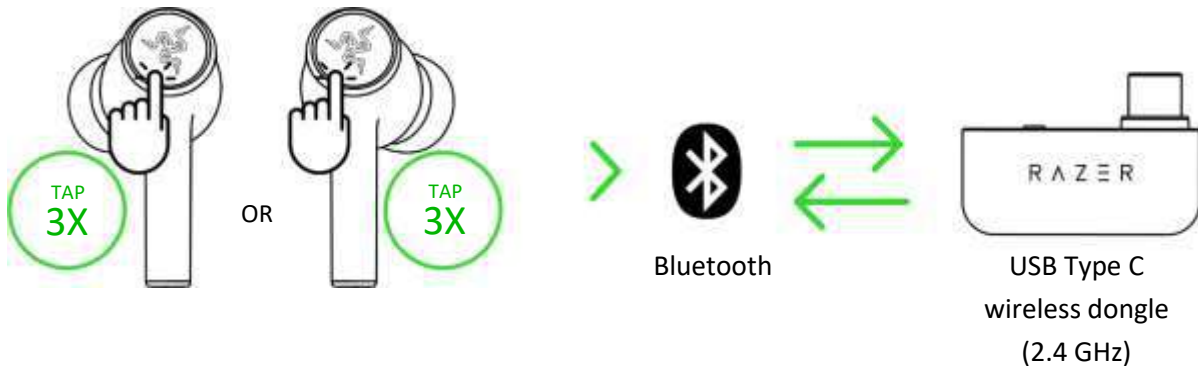
RZR.TO/AUDAPP
(For China Only)

 *Only available on iOS 13 / Android 10 (or higher) devices with Bluetooth connectivity.*

6. USING YOUR EARBUDS

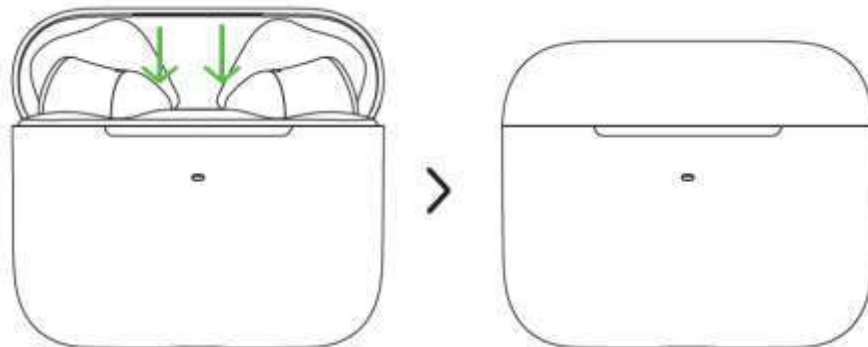
SWITCHING BETWEEN AUDIO SOURCES

When connected to any audio source, tap the function button thrice to switch between the USB Type C wireless dongle and Bluetooth audio source or vice versa.

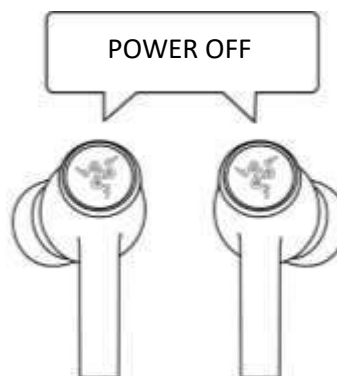


POWER ON/OFF

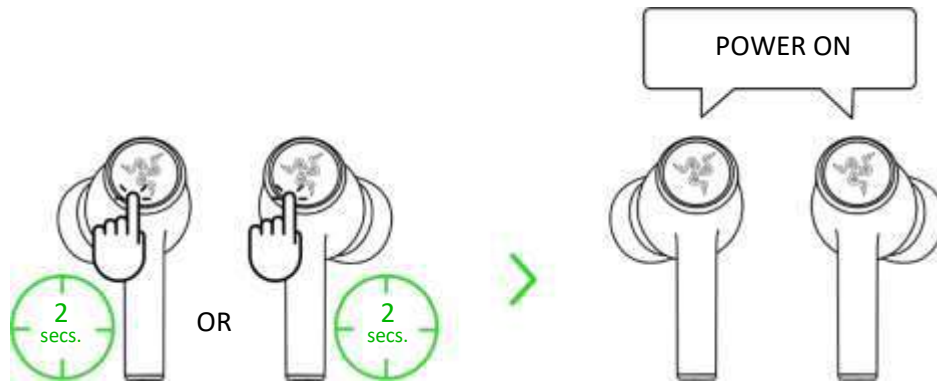
Place the earbuds inside the charging case and close the lid to power off the device. Opening the lid if they are in the charging case will power them on.



If the earbuds are left idle outside the charging case for a few minutes, you will hear an audio prompt, and then the earbuds will power off.

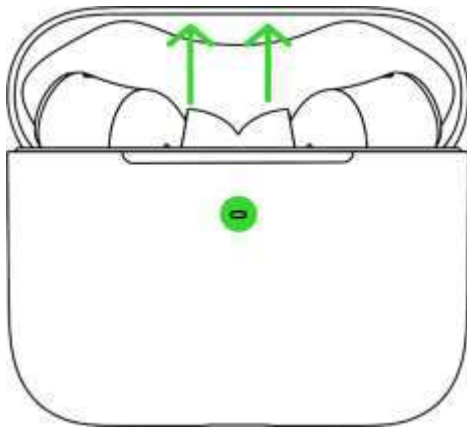





Tap and hold the function button on each earbud for at least 2 seconds to power them on again. You will hear an audio prompt from each earbud once powered on.



BATTERY LEVEL

When unplugged and opened, the charging case will show the battery status of the charging case.




Indicator	Status
Static green 	Battery full
Static orange 	Battery low
Blinking red 	Battery critical

UNDERSTANDING RAZER SMARTSWITCH

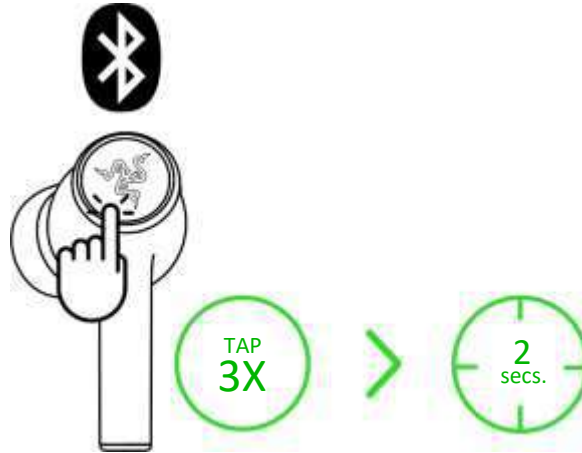
With the Razer Hammerhead HyperSpeed simultaneously connected to a PC or gaming console (via USB Type C wireless dongle) and a mobile device (via Bluetooth), you'll be able to use the earbuds for incoming/outgoing/conference calls from a connected Bluetooth device and switch back to the game audio without removing the earbuds.

The following behaviors below will help you understand how your earbuds respond to audio source switching and incoming/outgoing/conference calls when your earbuds are connected to a Bluetooth device and the USB Type C wireless dongle:

Activity	Razer SmartSwitch behavior
Streaming via USB Type C wireless dongle	<ul style="list-style-type: none"><li data-bbox="435 716 1485 835">▪ The earbuds will automatically switch to Bluetooth audio source for incoming/outgoing/conference calls from your mobile device and resume using the USB Type C wireless dongle after each call.<li data-bbox="435 856 1485 940"> <i>You can deactivate automatic source switching for incoming calls by enabling your earbud's Do Not Disturb feature on the Razer Audio app.</i><li data-bbox="435 961 1485 1081">▪ Audio from the connected mobile device will ONLY automatically stream on the earbuds if no audio is present or streaming on the USB Type C wireless dongle.<li data-bbox="435 1102 1485 1186">▪ Auto-pause on streamed audio when switching audio sources depends on the app you're using (e.g., Spotify, Apple Music).
Streaming via Bluetooth	<ul style="list-style-type: none"><li data-bbox="435 1234 1485 1354">▪ When you switch to the USB Type C wireless dongle audio source, your earbuds will remain connected to your mobile device via Bluetooth. However, the Razer Audio app will disconnect from your mobile device.<li data-bbox="435 1375 1485 1459">▪ Auto-pause on streamed audio when switching audio sources depends on the app you're using (e.g., Spotify, Apple Music).
Not streaming on any audio source	Audio will play on the first audio source that streams audio.

GAMING MODE

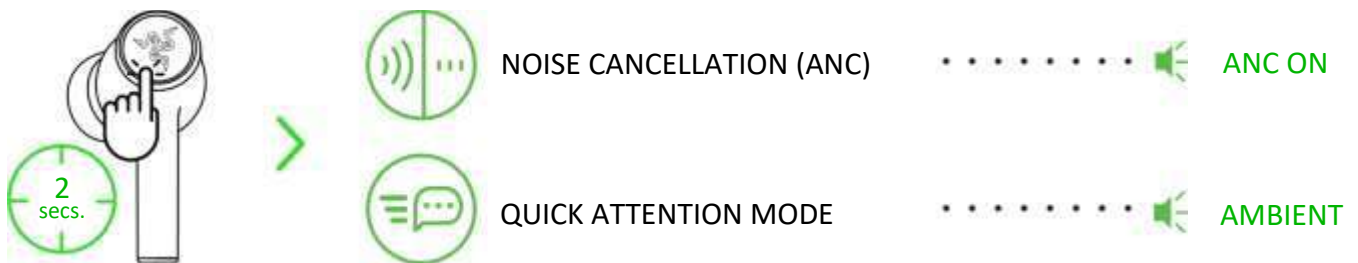
When using Bluetooth as the audio source, triple tap, then hold the last tap for at least 2 seconds on any earbud to activate gaming mode. Once enabled, your earbuds will function at a lower latency, giving you real-time audio feedback while gaming. Repeat the same gesture to deactivate this feature.



i For best performance, keeping your earbuds within a very close distance of the audio source is recommended.

ACTIVE NOISE CANCELLATION (ANC) / QUICK ATTENTION MODE

Active Noise Cancellation (ANC) helps eliminate background noise for enhanced immersion, while Quick Attention Mode improves your awareness by feed-forwarding the sound of your surroundings into the earbuds. While connected to any audio source, tap and hold on any earbud for at least 2 seconds to activate ANC and repeat to activate Quick Attention Mode.





*An audio prompt will notify you when ANC and Quick Attention Mode have been enabled.
Complete customization of these functions can be made using the Razer Audio app.*

FUNCTION BUTTON QUICK REFERENCE

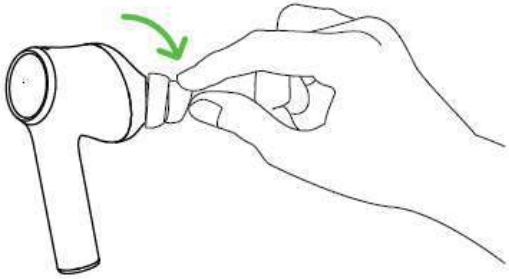
The following default gestures are only available when the earbuds are powered on with Bluetooth as the audio source. These gestures can be remapped using the Razer Audio App.

Action	Effect
Tap	Play/pause*
	Accept incoming call or end current call
Tap and hold for 2 seconds	Reject incoming call or end current call
	Power on the corresponding earbud
	Cycle between Enable ANC and Enable Quick Attention Mode*
Tap and hold for 4 seconds	Activate Bluetooth pairing mode*
Double tap	Accept incoming call or switch calls
	Skip to the next track when playing media
	Mute or unmute the microphone (Xbox mode only)
Double tap, then hold the last tap for 2 seconds	Decrease volume (on the left earbud)
	Increase volume (on the right earbud)
Triple tap	Switch between Bluetooth and USB Type C dongle audio source*
Triple tap, then hold the last tap for 2 seconds	Enable/disable Gaming Mode
	While in pairing mode, clear paired devices

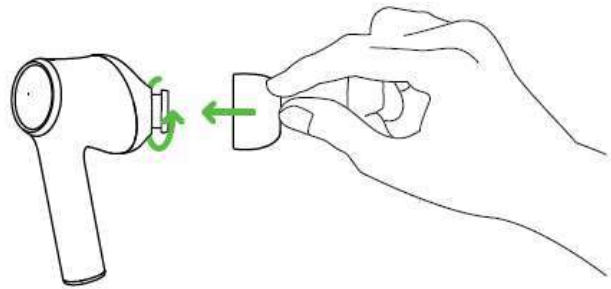
**You can also use these functions when using the USB Type C wireless dongle as the audio source.*

USING THE SILICONE EAR-TIPS

The silicone ear-tips offer increased comfort, sound isolation, and security. Various size options let you achieve a comfortable and secure fit that effectively reduces unwanted noise.



Removal



Replacement

i Due to individuals' different ear canal sizes, it's recommended to interchange the ear-tips to a larger or smaller size to improve comfort and sound quality and achieve a proper seal.

7. SAFETY AND MAINTENANCE

SAFETY GUIDELINES

To achieve maximum safety while using your Razer Hammerhead HyperSpeed, we suggest that you adopt the following guidelines:

Should you have trouble operating the device properly and troubleshooting does not work, unplug the device and contact the Razer hotline or go to support.razer.com for assistance.

Do not take apart the device, and do not attempt to operate it under abnormal current loads. Doing so will void your warranty.

Operate the device only within the specific temperature range of 0°C (32°F) to 40°C (104°F). Should the temperature exceed this range, unplug and/or switch off the device to let the temperature stabilize to an optimal level.

Your earbuds isolate external ambient sounds even at low volumes, resulting in lowered awareness of your external surroundings. Please remove the earbuds when engaging in activities that require active awareness of your surroundings.

Listening to excessively loud volumes over extended periods can damage your hearing. Furthermore, legislation of certain countries permits a maximum sound level of 86db to affect your hearing for 8 hours a day. We, therefore, recommend that you reduce the volume to a comfortable level when listening for prolonged periods. Please, take good care of your hearing.

MAINTENANCE AND USE

The Razer Hammerhead HyperSpeed requires minimum maintenance to keep it in optimum condition. Once a month, we recommend you clean it using a soft cloth or cotton swab to prevent dirt buildup. Do not use soap or harsh cleaning agents.

8. LEGALESE

COPYRIGHT AND INTELLECTUAL PROPERTY INFORMATION

©2022 Razer Inc. All rights reserved. Razer, the triple-headed snake logo, Razer logo, "For Gamers. By Gamers." and "Razer Chroma" are trademarks or registered trademarks of Razer Inc. and/or affiliated companies in the United States and other countries. Actual product may differ from pictures. All other trademarks are the property of their respective owners. Warranty not valid outside of product's intended region.

Android, Google, Google Logo, Google Play, and the Google Play logo are trademarks of Google LLC.

Apple, the Apple logo, and iPhone are trademarks of Apple Inc., registered in the U.S. and other countries. App Store is a service mark of Apple Inc.

Microsoft, Xbox, Xbox "Sphere" Design, Xbox Series X|S, Xbox One, Windows 10, and Windows 11 are trademarks of the Microsoft group of companies. All other trademarks are the property of their respective owners.

The Bluetooth® word mark and logos are registered trademarks owned by Bluetooth SIG, Inc., and any use of such marks by Razer is under license.

Razer Inc. ("Razer") may have copyright, trademarks, trade secrets, patents, patent applications, or other intellectual property rights (whether registered or unregistered) concerning the product in this guide. Furnishing of this guide does not give you a license to any such copyright, trademark, patent or other intellectual property right. The Razer Hammerhead HyperSpeed (the "Product") may differ from pictures whether on packaging or otherwise. Razer assumes no responsibility for such differences or for any errors that may appear. Information contained herein is subject to change without notice.

LIMITED PRODUCT WARRANTY

For the latest and current terms of the Limited Product Warranty, please visit [razer.com/warranty](https://www.razer.com/warranty).

LIMITATION OF LIABILITY

Razer shall in no event be liable for any lost profits, loss of information or data, special, incidental, indirect, punitive or consequential or incidental damages, arising in any way out of distribution of, sale of, resale of, use of, or inability to use the Product. In no event shall Razer's liability exceed the retail purchase price of the Product.

GENERAL

These terms shall be governed by and construed under the laws of the jurisdiction in which the Product was purchased. If any term herein is held to be invalid or unenforceable, then such term (in so far as it is invalid or unenforceable) shall be given no effect and deemed to be excluded without invalidating any of the remaining terms. Razer reserves the right to amend any term at any time without notice.