

Button Functions (Recording Stopped):



Access the dash cam's Settings menu



Takes a snapshot and stores it in the Photo Folder.



Enters the playback menu to review previous recordings and photos.



Begins loop recording.

Button Functions (While Recording):



When pressed the camera saves the current clip from being overwritten.



Takes a snapshot and stores it in the Photo Folder.



Toggles the microphone on/off. Note that the icon on the button indicates the action that will be taken when the button is pushed, not the current setting. The current setting is shown on the status bar at the top of the screen.



Stops loop recording. While in an Emergency Recording you will be asked to confirm.

**Cobra**<sup>®</sup>

**SC 201**  
DASH CAM



**QUICK START GUIDE**

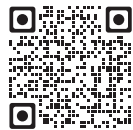
Scan QR Code For Additional Languages:



# THANK YOU!

## For purchasing the new COBRA® SC 201

View, edit and share from your smartphone or desktop.  
Share & receive real-time driver alerts.  
Download today!  
[drivesmarter.com/downloads](http://drivesmarter.com/downloads)



Full manual available at: [www.cobra.com](http://www.cobra.com)

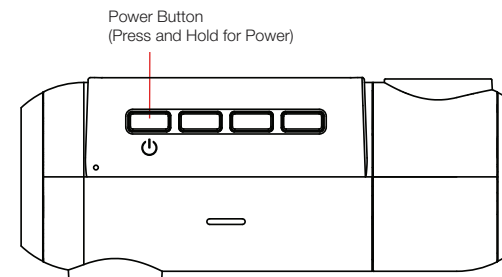
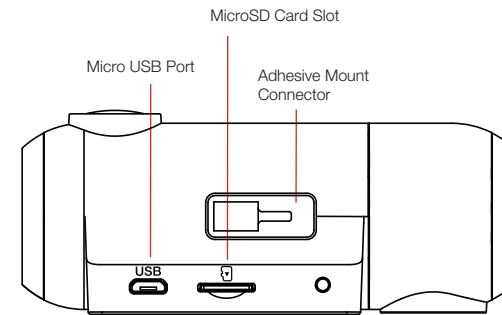
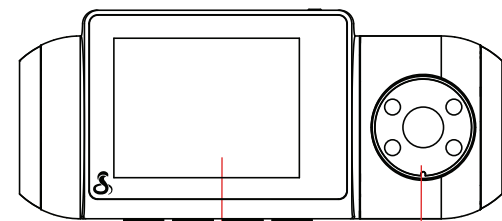
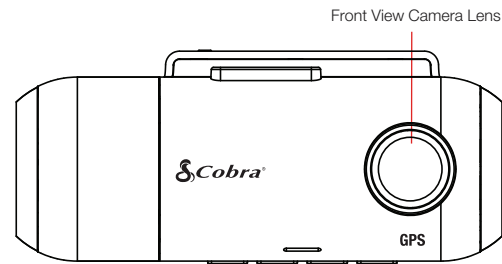


FCC ID: BBOSC201, IC: 906A-SC201. THIS DEVICE COMPLIES WITH PART 15 OF THE FCC RULES. OPERATION IS SUBJECT TO THE FOLLOWING TWO CONDITIONS: (1) THIS DEVICE MAY NOT CAUSE HARMFUL INTERFERENCE, AND (2) THIS DEVICE MUST ACCEPT ANY INTERFERENCE RECEIVED INCLUDING INTERFERENCE THAT MAY CAUSE UNDESIRABLE OPERATION.

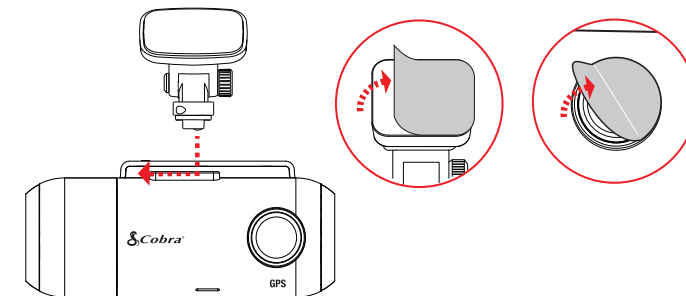
FCC NOTE: Modifications not expressly approved by the manufacturer could void the user's FCC granted authority to operate the equipment.

Cobra® and the snake design are registered trademarks of Cobra Electronics Corporation, USA. Cobra Electronics Corporation™ is a trademark of Cobra Electronics Corporation, USA. Other trademarks and trade names are those of their respective owners.

## SC 201 Features



**1** Attach Adhesive Mount and remove the protective film from mount and camera lens



**2** Attach Camera Assembly to Windshield

