

Register and Save!

waterpik®
sonic-fusion® 2.0

Congratulations!

You are now on your way to better oral health!

Save Over \$50!

Register at waterpik.com/registration to receive exclusive discount code.

Offer includes
**50% OFF +
FREE SHIPPING**
on your next order
of Sonic-Fusion®
brush heads

Two brush head sizes available!

We'd love to hear from you!

Connect with Us
@Waterpik



Call: 1-800-525-2774
www.waterpik.com

Waterpik® 14 Day Challenge App

Make water flossing a habit! Try our new mobile App for the best water flossing experience.



©2021 Water Pik, Inc.
FN 20028978-FAB

This device is compatible with voltages of 100-240 VAC, 50-60 Hz



Compact Size

Full Size



Register and Save

Register your product at waterpik.com/registration to receive over \$50 in savings (includes 50% OFF your 1st replacement brush heads + FREE shipping!).



Write a Review

Creating innovative Waterpik® products that inspire better oral health is our passion. We invite you to leave a review by sharing your thoughts on the World's First Flossing Toothbrush on waterpik.com or the retailer's website.



We're Here to Help

We hope you are loving your new Sonic-Fusion® 2.0 flossing toothbrush. If for any reason you are not satisfied or have any product questions, please contact our fast and friendly Customer Service Team based in Fort Collins, Colorado. Sonic-Fusion® 2.0 is backed by a 3-year manufacturer's warranty.

Call: 1-800-525-2774
Monday-Friday
7 am- 5 pm MST



Chat or E-mail
service@waterpik.com



Quick Start
Guide Inside!

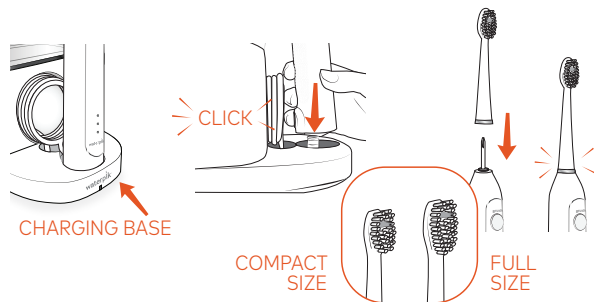


Quick Start Guide

1 GETTING STARTED

Place toothbrush into charging base. Attach COMPACT or FULL size flossing brush head.

Tip: For the best experience and optimal battery performance, keep the toothbrush stored in the charger base when not in use.

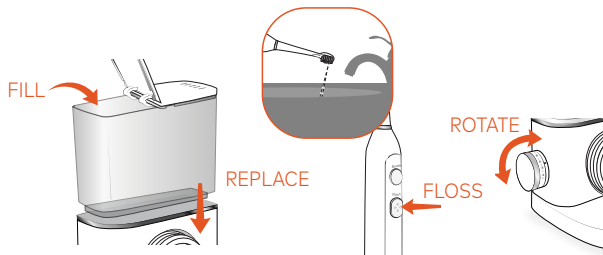


2 PRIMING UNIT (FIRST TIME USE ONLY)

Fill reservoir with warm water and replace it firmly on the base.

Point tip into sink. Press FLOSS button. Rotate pressure knob repeatedly between high and low until water flows.

Note: If Floss mode does not turn on, please contact us.



3 NEED HELP?

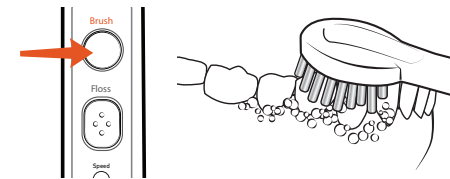
Visit Waterpik.com/WelcomeSF
To watch a How To Video and find additional product support.

Call Us! 1-800-525-2774

Sonic-Fusion® 2.0 Modes

BRUSH

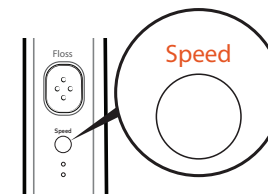
Press BRUSH button, use light pressure and clean all tooth surfaces.



BRUSH SPEEDS

If you wish to change to a different speed, you can do so by pressing the Speed button while brushing.

High: 2 LED's ON
Low: 1 LED ON



FLOSS

Press FLOSS button and adjust water pressure to desired setting. Keep lips partially closed to allow water to flow into sink.



BRUSH + FLOSS

Press BRUSH button, then press FLOSS button.

