

Register and Save!

Offer includes
50% off
your next order
of assorted
tips + tip
storage case.

Save over \$50!

Visit Waterpik.com/WelcomeWF
to watch How To video.

Register your product and receive over
\$50 in savings.

Waterpik.com/registration

We'd Love to Hear from You!



Connect with Us
@Waterpik



Call: 1-800-525-2774
www.waterpik.com

Waterpik® 14 Day Challenge App

Make water flossing a habit! Try our new mobile App for the best
water flossing experience.



waterpik®
waterflosser

Congratulations!

You are now on your way
to better oral health!



Register and Save

Register your product at waterpik.com/registration to receive over
\$50 in savings (includes **50%** off your next order of assorted tips + tip
storage case).



Write a Review

Creating innovative Waterpik® products that inspire better oral
health is our passion. We invite you to leave a review by sharing your
thoughts on the Aquarius® Water Flosser on waterpik.com or the
retailer's website.



We're Here to Help

We hope you are loving your new Waterpik® Aquarius® Water Flosser.
If for any reason you are not satisfied or have any product questions,
please contact our fast and friendly Customer Service Team based in
Fort Collins, Colorado. Waterpik® Aquarius® Water Flosser is backed
by a 3-year manufacturer's warranty.

Call: 1-800-525-2774
Monday-Friday
7 am - 5 pm MST



Chat or E-mail
service@waterpik.com



**Quick Start
Guide Inside!**

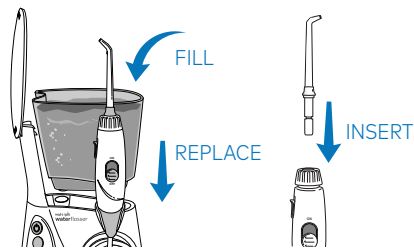


Quick Start Guide

PRIMING UNIT (FIRST TIME USE ONLY)

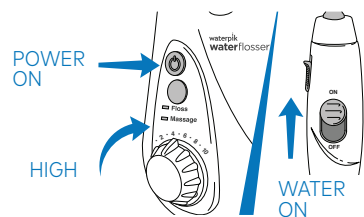
1

Fill reservoir with warm water and replace it firmly on the base. Insert tip firmly until it clicks into place.



2

Turn pressure to high, point tip into sink, turn power ON and water switch to ON until water flows. Turn power and water OFF.



NEED HELP?

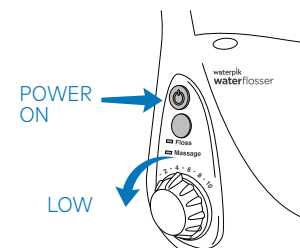
Visit Waterpik.com/WelcomeWF
To watch a How To Video and find additional product support.

Call Us! 1-800-525-2774

WATER FLOSS

3

With power OFF and water switch in OFF position, place tip in mouth. Turn power ON. Turn water switch to ON.



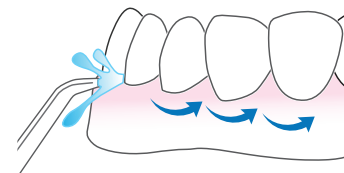
4

Lean over sink. Close lips enough to prevent splashing, while still allowing water to flow from mouth into sink.



5

Aim water at the gumline at a 90 degree angle. Follow the gumline and pause briefly between teeth.



**TO AVOID MESS: PLACE TIP
IN YOUR MOUTH BEFORE
TURNING WATER ON.**