

Calisto 610

Corded USB Speakerphone

User Guide

Contents

Welcome	3
System Requirements	3
What's in the box	4
Speakerphone Controls	5
Connect PC and Call	6
Plantronics Hub Software	7
Devices Tab	7
Applications Tab	7
Troubleshooting	8

Welcome

Congratulations on purchasing your new Plantronics Calisto 610 corded USB speakerphone. This user guide contains instructions for setting up and using your Calisto 610 speakerphone.

Calisto 610 highlights and features

- Personal corded speakerphone peripheral device.
- Connects to your PC.
- Full duplex audio, hear and be heard as naturally as speaking face-to-face.
- 360° microphone coverage.
- Integrated call control and other features via Plantronics Hub software.
- Softphone and Unified Communications client call control features - call answer/end, volume up/down, microphone mute/un-mute, call reject.
- Small and portable, includes carrying case.

NOTE *Please refer to the separate safety instructions for important product safety information prior to installation or use.*

System Requirements

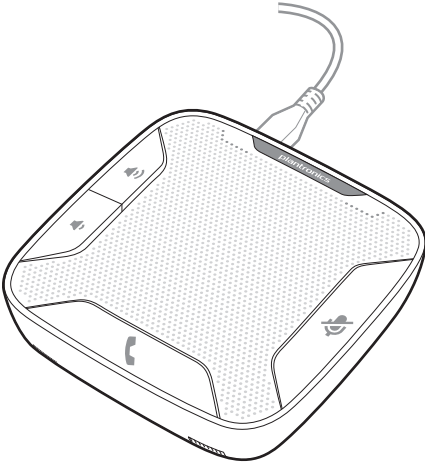
Computer

- Supported operating systems: Windows XP SP3 or later, Windows Vista SP1 or later, Windows 7 SP1, Windows 8 and Windows 10
- Processor: 400 MHz Pentium processor or equivalent (minimum); 1 GHz Pentium processor or equivalent (recommended)
- RAM: 96 MB (minimum); 256 MB (recommended)
- Hard disk: 1.5GB (minimum); 3GB (recommended)

What's in the box

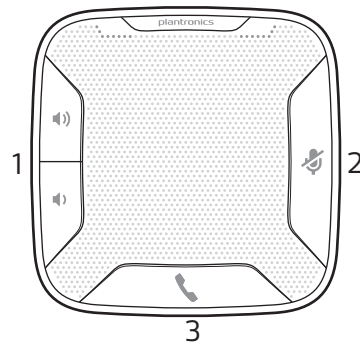


Carrying case



Corded speakerphone

Speakerphone Controls



1 Volume Up/Volume Down Buttons

Increase/decrease volume Press up/down volume buttons to desired volume

Maximum or minimum volume Hold up/down buttons until max/min reached

Ringer volume Press up/down volume buttons while no call is active

2 Mute Button

Mute microphones (far-end cannot hear you) 1 short button press mutes mics; Mute LED turns solid red

Un-Mute microphones 1 short button press un-mutes microphones; Mute LED turns off

Reject an incoming call 1 long button press (2 seconds); call rejected

3 Call Button

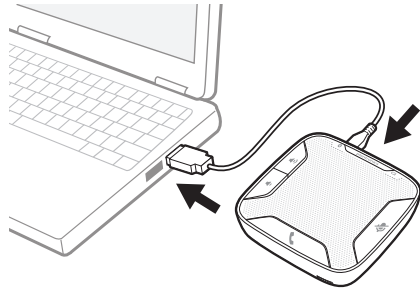
Answer or end a call 1 button press

Answer a 2nd call while on a call 1 button press ends first call, 2nd 1 short button press answers 2nd call

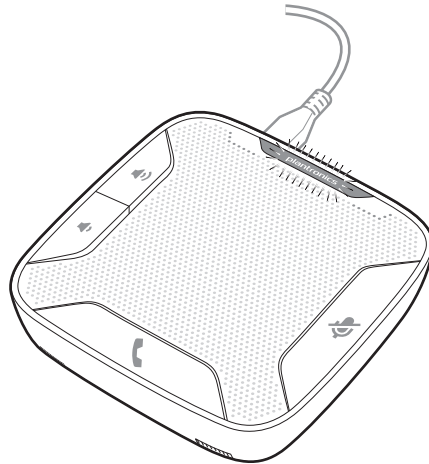
Connect PC and Call

- 1 The speakerphone will power on once it is connected to the PC.

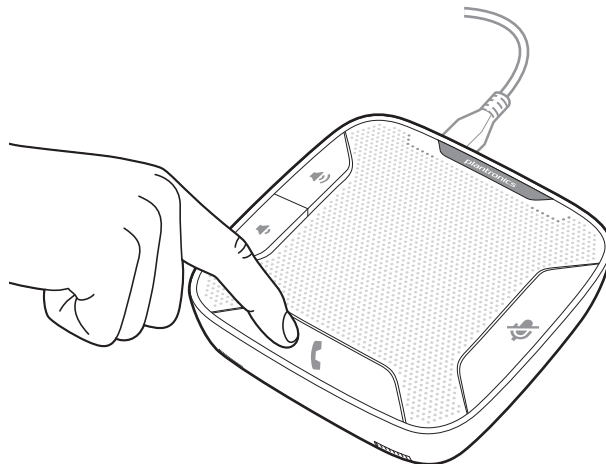
NOTE Do not insert directly into a docking station or hub.



- 2 The Plantronics logo will illuminate once the speakerphone is ready for a call.



- 3 Press the Call button to begin or end a call.



Plantronics Hub Software

Plantronics Hub software (optional) for Windows enhances your speakerphone's capabilities, and, enhances your user experience when used with your PC.

For example, Plantronics Hub software provides:

- Integrated call control for popular softphones and Unified Communications (UC) clients
- Enhanced UC presence capabilities - more granular availability status means fewer interruptions
- Useful Preferences settings
- Automated software and firmware updates

Hub software loads when your PC is booted up and runs discretely in the background, requiring no user intervention except via the following:

- *Plantronics Control Panel* — a one stop utility for all device, application, preferences and configuration options, and product information
- *Plantronics Update Manager* — provides notification and facilitates installation for your speakerphone's firmware and Hub software updates

To launch any of these utilities, go to: Start > Programs > Plantronics

Devices Tab

- Displays active Plantronics devices supported by Plantronics Hub software.
- Audio Settings — Provides a convenience shortcut to Windows audio configuration options.
- Device Settings — No Device settings are available for Calisto 610 in Plantronics Control Panel.

Applications Tab

- Displays all applications enabled by Plantronics Hub software and supported for Calisto 610.
- All supported applications which are currently running are in designated with a "check mark".
- Allows you to configure the behavior of supported media players when a softphone call is received, and when the call has ended.
- Provides opt-in confirmation to allow Plantronics to capture usage statistics to help improve our software.
- Allows configuration of presence information sharing with supported applications.

Troubleshooting

How do I know Calisto 610 is turned on?

Pressing the volume +/- buttons while the unit is ON emits a volume adjustment tone.

Is there a visual indicator on the Calisto 610 that shows volume level?

No. There is no visual indication of volume level or volume adjustments on the Calisto 610.

NOTE *The Calisto 610 has a mid-range default volume setting. It provides audible indications as you adjust the volume and when you have reached the maximum or minimum volume level.*

What size room and how many participants does Calisto 610 support for group conference calls?

There are 2 variables to consider for this answer, and both involve the perceived audio by 8 listeners on the other (far) end of a Calisto 610 call:

- 1 The acoustic properties of the room: Not all rooms are created equal, and room acoustics can vary significantly.
- 2 The subjective opinion (or hearing abilities) of the far-end listener(s) which can also vary significantly

With these variables considered, in general Calisto 610 can be used in up to a 12x12 foot room with up to 8 participants.

NEED MORE HELP?

plantronics.com/support

plantronics®
Simply Smarter Communications™

Plantronics, Inc.

345 Encinal Street
Santa Cruz, CA 95060
United States

Plantronics B.V.

Scorpius 171
2132 LR Hoofddorp
Netherlands

© 2017 Plantronics, Inc. All rights reserved. Plantronics and Calisto are trademarks or registered trademarks of Plantronics, Inc. The Bluetooth trademark is owned by Bluetooth SIG, Inc. and any use of the mark by Plantronics, Inc. is under license. Microsoft, Lync, Windows, and Windows XP are registered trademarks of Microsoft Corporation in the US and other countries.

Patents US 5,210,791; Patents Pending

209576-06 (06.17)

plantronics®