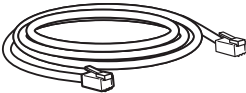
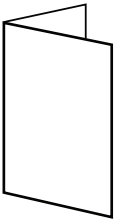


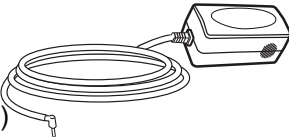


Package Contents

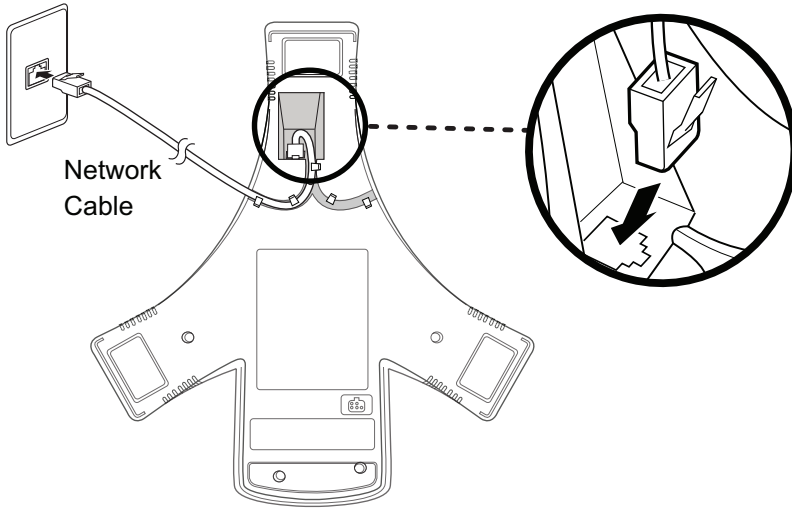


Optional Accessories

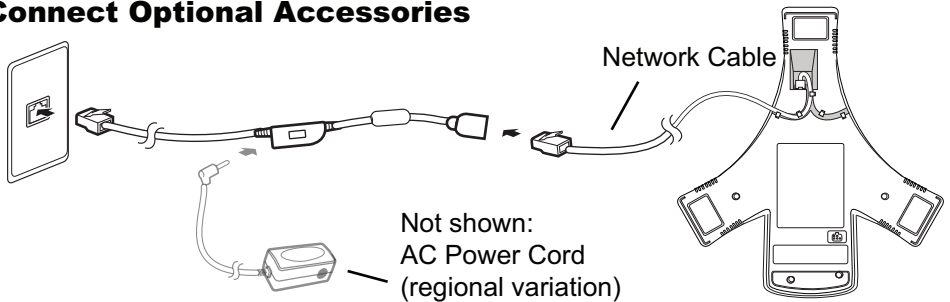
Not shown:
AC Power Cord
(regional variation)



Connect Network Cable



Connect Optional Accessories

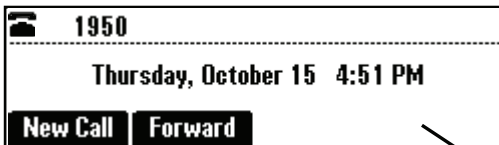


Startup

After connecting to the network, the SoundStation® IP 5000 automatically powers up via Power over Ethernet (PoE), and begins a process of establishing itself on the network. When this is complete, the idle screen is displayed (as shown below).

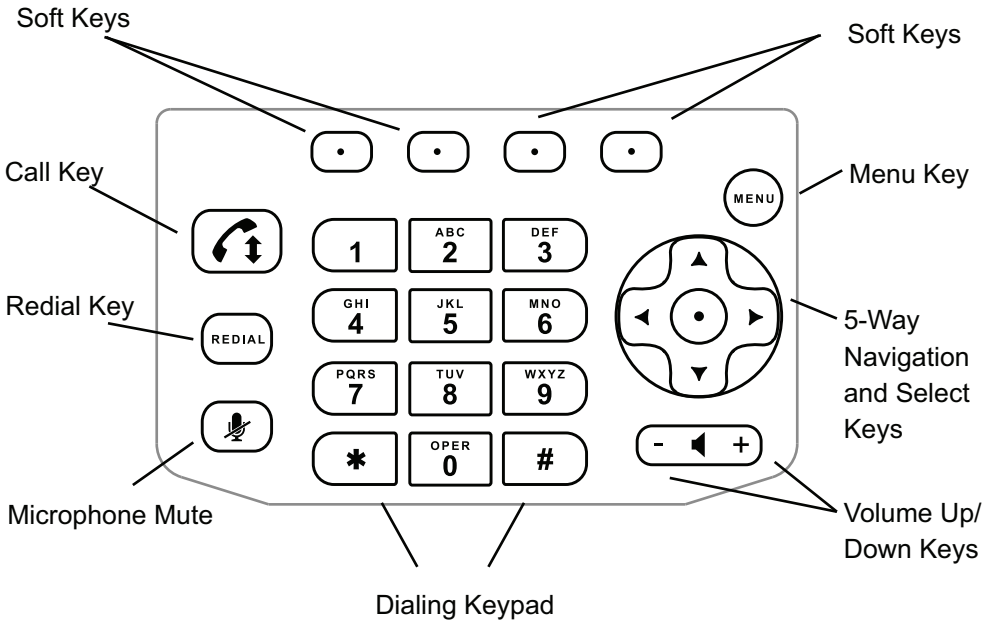
For more information, refer to the SoundStation IP 5000 documentation, available online at:

<http://support.polycom.com/voice>



Idle Screen

Keypad



Features

