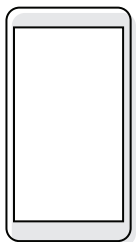
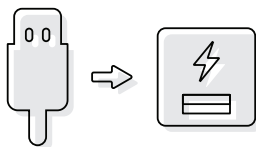


## 1. BEFORE YOU START

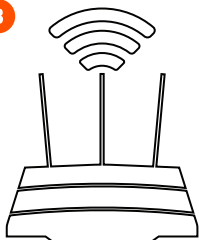
1



2



3



4



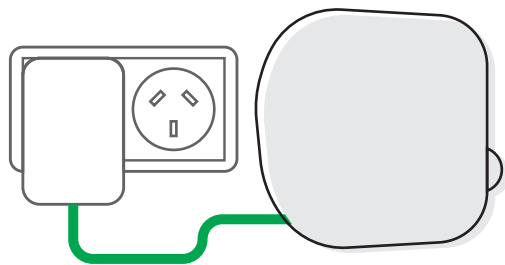
Scan this code  
or search for  
Cocoon Connect

### **Before you begin, make sure you have:**

1. A mobile device - Android (V4.1 or later) or iOS (V8 or later)
2. A USB power source to charge the cameras
3. A Wi-Fi connection (have the password handy)
4. Download the Cocoon Connect app

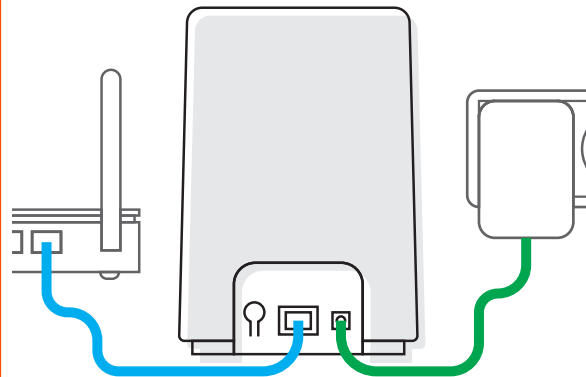
For detailed instructions and videos, visit [www.cocoonproducts.com.au](http://www.cocoonproducts.com.au)

## 2. CHARGE CAMERAS



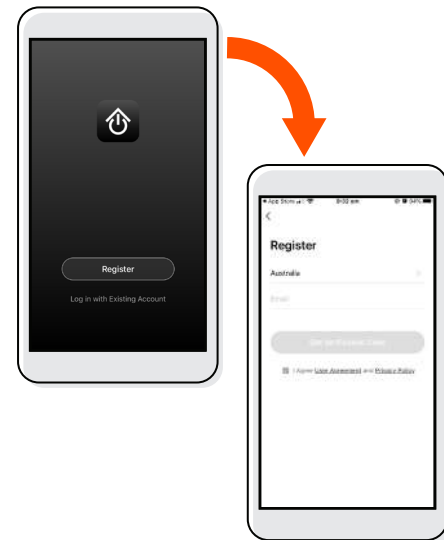
It is recommended you charge the batteries fully prior to use. Connect the included USB cables to a USB power source (not included)

## 3. CONNECT BASE STATION



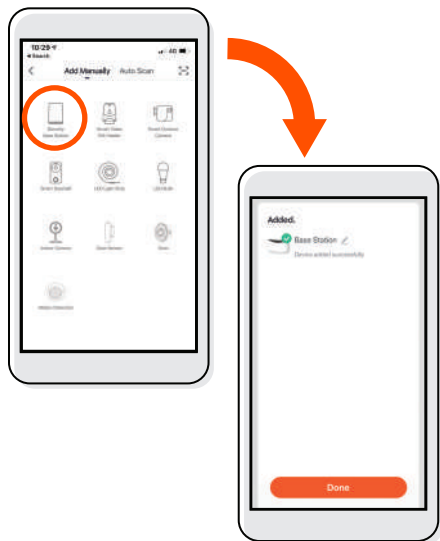
Connect the base station to your router using the ethernet cable. Connect the adapter into an electrical outlet

## 4. APP SETUP



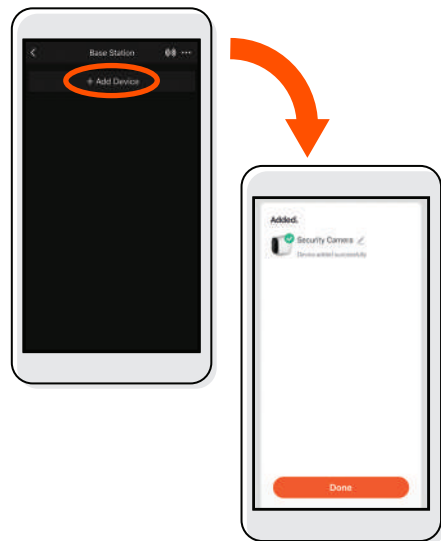
First time users:  
Register an account and follow the remaining prompts on screen

## 5. ADD BASE STATION TO APP



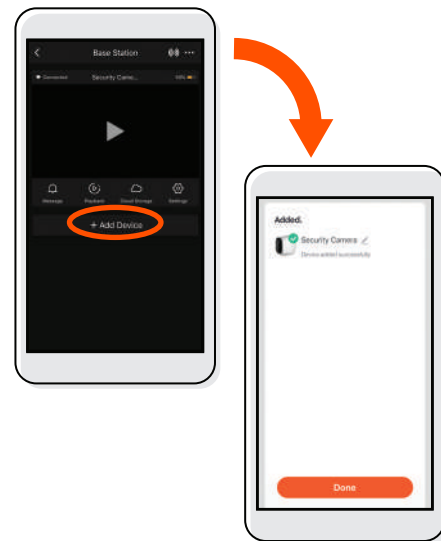
From the main screen of the Cocoon Connect app, add a new product and select Security Base Station, follow the prompts

## 6. ADD FIRST CAMERA



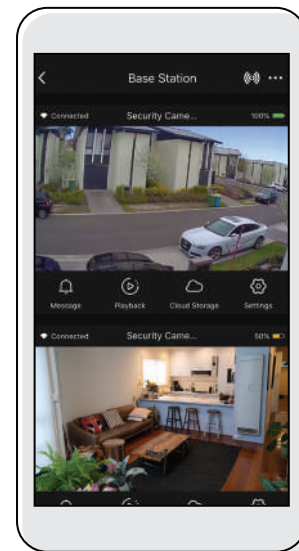
To add the first camera, press +Add Device. You will be asked to confirm that red indicator is blinking. Press next step and then next to connect the camera. For further detailed instructions please reference the instruction manual

## 7. ADD SECOND CAMERA



Repeat the exact same steps to connect the second camera

## 8. CONTROL YOUR WIRELESS SECURITY CAMERA SYSTEM



Use, manage and control your Wireless Security Camera System from the Cocoon Connect app