

**DYMO**<sup>®</sup>

## Quick Start Guide



LabelWriter<sup>®</sup> 450 Duo

**Copyright**

© 2015 Sanford, L.P. All rights reserved. Revised 6/15.

No part of this document or the software may be reproduced or transmitted in any form or by any means, or translated into another language without the prior written consent of Sanford, L.P.

**Trademarks**

DYMO, LabelWriter, and DYMO Label are registered marks in the United States and other countries. All other trademarks are the property of their respective holders.

# Quick Start Guide



For complete information on using your LabelWriter printer, download the *LabelWriter User Guide* from one of the following locations:

- **support.dymo.com**
- From the **Help** menu within DYMO Label™ software
- By using the QR code to download to your mobile device



## Downloading DYMO Label Software

Download the latest version of DYMO Label software from **support.dymo.com**.

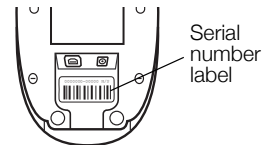
From the Help menu, you can view the following:

- DYMO Label v.8 Help
- DYMO Label v.8 User Guide
- LabelWriter Printer User Guide

## Register at [www.dymo.com/register](http://www.dymo.com/register)

The first time you open the software, you are asked to register your product. Registering ensures that you will receive any news and updates.

During the registration process, you will be asked to enter the serial number for your label printer. The serial number is located on the bottom of the printer.



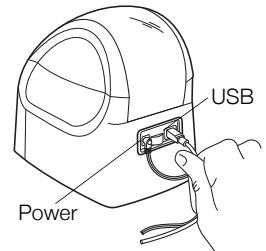
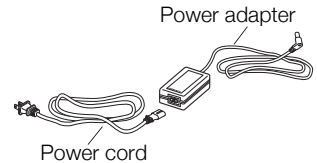
## Connecting your LabelWriter Printer

Do not connect the printer to your computer until after the software installation is complete.

### To connect the power

- 1 Plug the power cord into the power adapter.
- 2 Plug the power adapter into the power connector on the back of the printer.
- 3 Plug the other end of the power cord into a power outlet.
- 4 Plug the USB cable into the USB port on the back of the printer.
- 5 When the software is completely installed, connect the other end of the USB cable into an available USB port on your computer.

**Mac OS** If the printer is not in the printer list when the installation is complete, refer to the ReadMe file for instructions on how to add the printer.



## Loading Labels

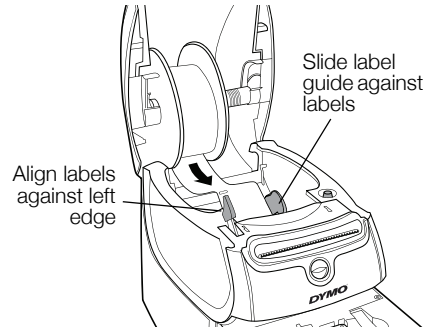
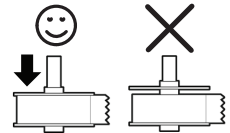
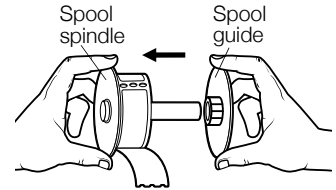
The LabelWriter Duo printer uses two types of labels: LW roll labels (such as Address or Shipping labels) and D1 label cassettes.

### To load a label roll

- 1 Place the label roll on the spindle so that the labels feed from underneath and the left edge of the label roll is firmly against the side of the spool.
- 2 Press the spool guide tightly against the side of the label roll, **leaving no gap** between the roll and the spool.
- 3 Insert the label spool into the slot in the cover with the labels extending from underneath the roll.
- 4 Align the left edge of the label with the left edge of the label feed slot and insert the label into the slot.
- 5 The printer automatically feeds the label, stopping at the beginning of the first label.
- 6 Slide label guide against labels.

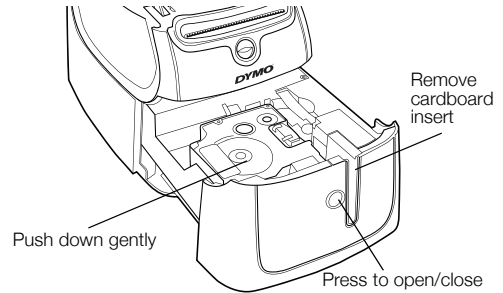
**IMPORTANT!** In order for the labels to feed properly during printing:

- Press the label spool guide flush against the label roll, leaving no gap.
- Insert the label with the left edge against the left edge of the label feed slot.



## To load a label cassette

- 1 Press the button on the front of the printer to open the label cassette compartment.  
**NOTE** Remove the protective cardboard insert from the label exit slot.
- 2 Insert the cassette and press firmly until the cassette clicks into place. Make sure label and ribbon are positioned correctly.
- 3 Press the button on the front of the printer to close the label cassette compartment.

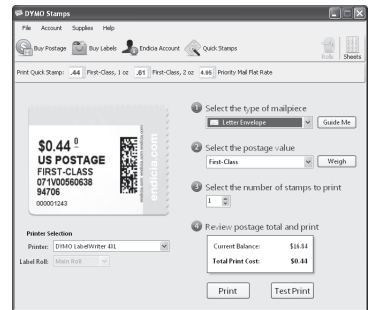


## Printing Postage with DYMO Stamps

To install DYMO Stamps and print postage, sign up for your no-monthly-fee DYMO Stamps account with Endicia. Go to: [www.endicia.com/dymostamps](http://www.endicia.com/dymostamps)

At the end of the sign up process, download and install the DYMO Stamps software. Refer to the DYMO Stamps online Help for more information about using the software.

**NOTE** You must have DYMO Label software and your LabelWriter printer installed before installing the DYMO Stamps software.







**DYMO**<sup>®</sup>

A Newell Rubbermaid Brand

©2015 SANFORD, L.P. WWW.DYMO.COM  
DISTRIBUTED BY: DYMO, ATLANTA, GA 30328  
CUSTOMER CARE: 877-724-8324

DIS-83 12/10

[www.dymo.com](http://www.dymo.com)

W472772