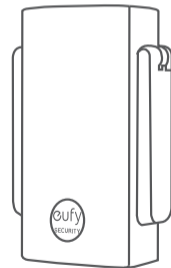


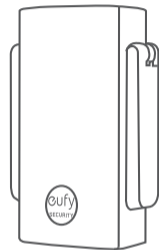


USER MANUAL

Wi-Fi Bridge



WHAT'S IN THE BOX



Wi-Fi Bridge
Model: T8021

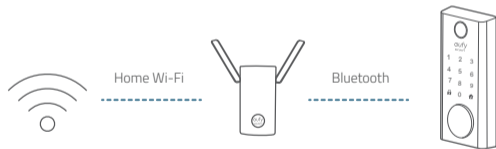
Note: Power connector may vary in different regions.

HOW THE SYSTEM WORKS

The Wi-Fi Bridge can work with multiple devices from the eufy Security family.

It can work with the Smart Lock series. The Wi-Fi Bridge is connected to the home router via Wi-Fi. When the smart lock is connected to the Wi-Fi Bridge successfully, you can check the status of your smart lock and lock or unlock the door on your phone anytime, anywhere.

To get the best Bluetooth signal, it's recommended that you place the Wi-Fi Bridge and your smart lock within a distance of 20 ft / 6m.



01

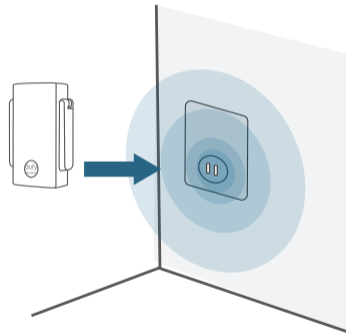
It can also work with the Battery-Powered Video Doorbell. For users who need an extra doorbell chime at a further location in the house, they can connect the Wi-Fi Bridge to the same home Wi-Fi network. The Wi-Fi Bridge will chime simultaneously when a visitor is pressing the doorbell button at the front door.



02

POWERING ON THE WI-FI BRIDGE

Plug the Wi-Fi Bridge into a power outlet at your desired location. The LED indicator turns a solid green when the Wi-Fi Bridge is ready for setup.



03

04



ADDING THE WI-FI BRIDGE TO YOUR EXISTING SYSTEM

1. Log on the eufy Security app.
2. Tap Add Device, and add the Wi-Fi Bridge to your device list.
3. Follow the on-screen instructions to add the Wi-Fi Bridge to your existing device.

Anker Innovations Limited. All rights reserved. eufy Security and eufy Security Logo are trademarks of Anker Innovations Limited, registered in the United States and other countries. All other trademarks are the property of their respective owners.

51005002506 V01

05

Notice

FCC Statement

This device complies with Part 15 of the FCC Rules. Operation is subject to the following two conditions: (1) this device may not cause harmful interference, and (2) this device must accept any interference received, including interference that may cause undesired operation.

Warning: Changes or modifications not expressly approved by the party responsible for compliance could void the user's authority to operate the equipment.

Note: This equipment has been tested and found to comply with the limits for a Class B digital device, pursuant to Part 15 of the FCC Rules. These limits are designed to provide reasonable protection against harmful interference in a residential installation.

This equipment generates uses and can radiate radio frequency energy and, if not installed and used in accordance with the instructions, may cause harmful interference to radio communications. However, there is no guarantee that interference will not occur in a particular installation. If this equipment does cause harmful interference to radio or television reception, which can be determined by turning the equipment off and on, the user is encouraged to try to correct the interference by one or more of the following measures: (1) Reorient or relocate the receiving antenna. (2) Increase the separation between the equipment and receiver. (3) Connect the equipment into an outlet on a circuit different from that to which the receiver is connected. (4) Consult the dealer or an experienced radio/TV technician for help.

FCC Radio Frequency Exposure Statement

The device has been evaluated to meet general RF exposure requirements. The device can be used in fixed/mobile exposure condition. The min separation distance is 20cm.

Notice: Shielded cables

All connections to other computing devices must be made using shielded cables to maintain compliance with FCC regulations.

06

The following importer is the responsible party
Company Name: POWER MOBILE LIFE, LLC
Address: 400 108th Ave NE Ste 400, Bellevue, WA 98004-5541
Telephone: 1-800-988-7973



This product complies with the radio interference requirements of the European Community.

Declaration of Conformity

Hereby, Anker Innovations Limited declares that this device is in compliance with the essential requirements and other relevant provisions of Directive 2014/53/EU. For the declaration of conformity, visit the Web site www.eufylife.com

Do not use the Device in the environment at too high or too low temperature, never expose the Device under strong sunshine or too wet environment.

The suitable temperature for T8021 is 0°C-45°C.

RF exposure information: The Maximum Permissible Exposure (MPE) level has been calculated based on a distance of d=20 cm between the device and the human body. To maintain compliance with RF exposure requirement, use product that maintain a 20cm distance between the device and human body.

CAUTION RISK OF EXPLOSION IF BATTERY IS REPLACED BY AN INCORRECT TYPE. DISPOSE OF USED BATTERIES ACCORDING TO THE INSTRUCTIONS.

Wi-Fi Operating Frequency Range: 2412~2472MHz for EU;

Wifi Max Output Power: 19dBm

Bluetooth Operating Frequency Range: 2402~2480MHz; Bluetooth Max Output Power: 8dBm
433MHz Frequency Range: 433.92MHz; 433MHz Max Output Power: 10dBm(ERIP)

The following importer is the responsible party (contact for EU matters only)

Importer: Anker Technology (UK) Ltd

Importer Address: Suite B, Fairgate House, 205 Kings Road, Tyseley, Birmingham, B11 2AA, United Kingdom

07

Customer Service

• Warranty

12-month Limited Warranty

• Call Us

United States +1 (800) 988 7973 Mon-Fri 9AM-5PM (PT)

United Kingdom +44 (0) 1604 936 200 Mon-Fri 6AM-11AM (GMT)

Germany +49 (0) 69 9579 7960 Mon-Fri 6:00-11:00

• Email Us

Customer Support: support@eufylife.com



@EufyOfficial



@EufyOfficial



eufyofficial

Anker Innovations Limited

Room 1318-19, Hollywood Plaza, 610 Nathan Road, Mongkok, Kowloon, Hong Kong

08