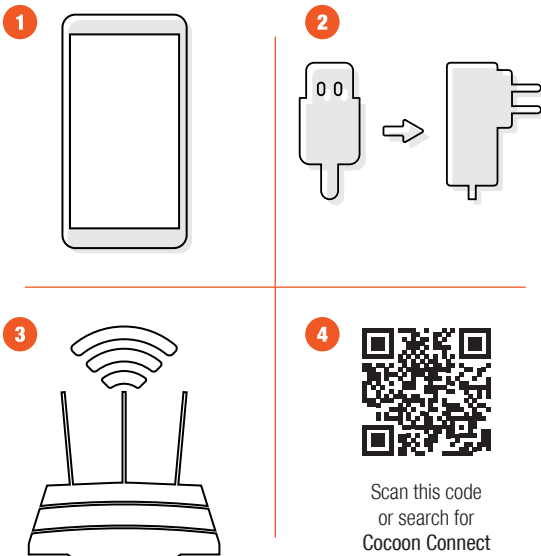


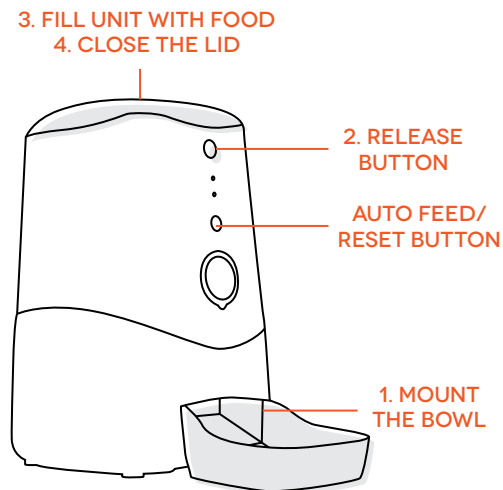
1. BEFORE YOU START



Before you begin, you'll need the following:

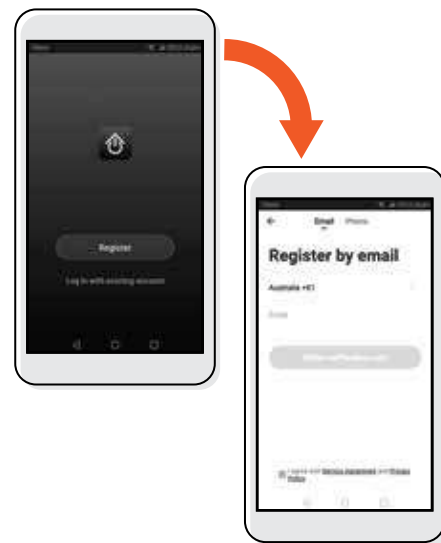
1. A mobile device - Android (V4.1 or later) or iOS (V8 or later)
2. USB Power going to the Pet Feeder
3. A WiFi connection (have the password handy)
4. Download the Cocoon Connect app

2. MOUNT BOWL & FILL



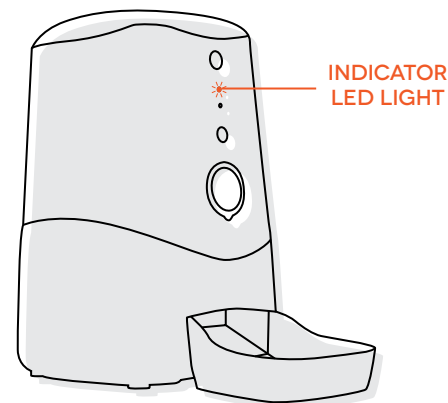
1. Slide the bowl into the feeder's outlet
2. Press the release button to lift up the lid
3. Pour food into the unit. The red LED will stop flashing when hopper is full
4. Press down to close the lid

3. APP SETUP



First time users:
Register an account and follow the remaining prompts on screen

4. BEGIN PAIRING MODE



Wi-Fi indicator LED will be flashing white

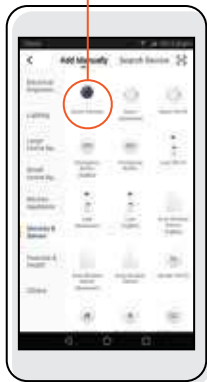
Press Manual Feed Button for 5 seconds if the Wi-Fi indicator LED isn't flashing. Refer to your instruction manual if you are having issues putting the Pet Feeder into pairing mode

5. ADD THE PET FEEDER

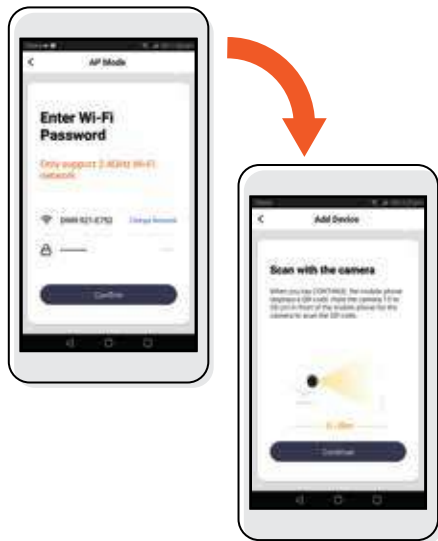


1. ADD NEW DEVICE

2. SELECT SMART CAMERA (IN 'SENSOR & SECURITY' SECTION)



6. CONNECT PET FEEDER TO WI-FI



1. Confirm your local Wi-Fi password

If you have any trouble with this step, ensure that your Wi-Fi password is correct. *If you still have trouble with this step, please check the Instruction Manual*

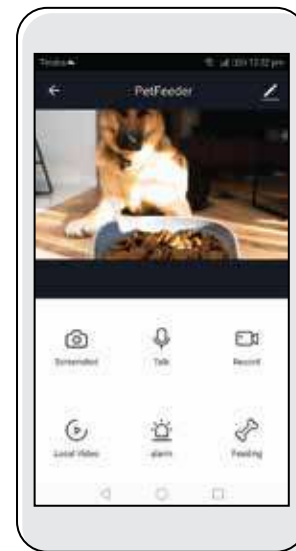
7. SCAN QR CODE WITH CAMERA



1. Hold the mobile phone 15 to 20cm in front of the Pet Feeder for the camera to scan the QR code.

2. Pet Feeder will beep when the code is scanned

8. CONTROL YOUR PET FEEDER



Use the Cocoon Connect app's intuitive control to view the Pet Feeder's camera, take snap shots and activate the feeder's pet food hopper