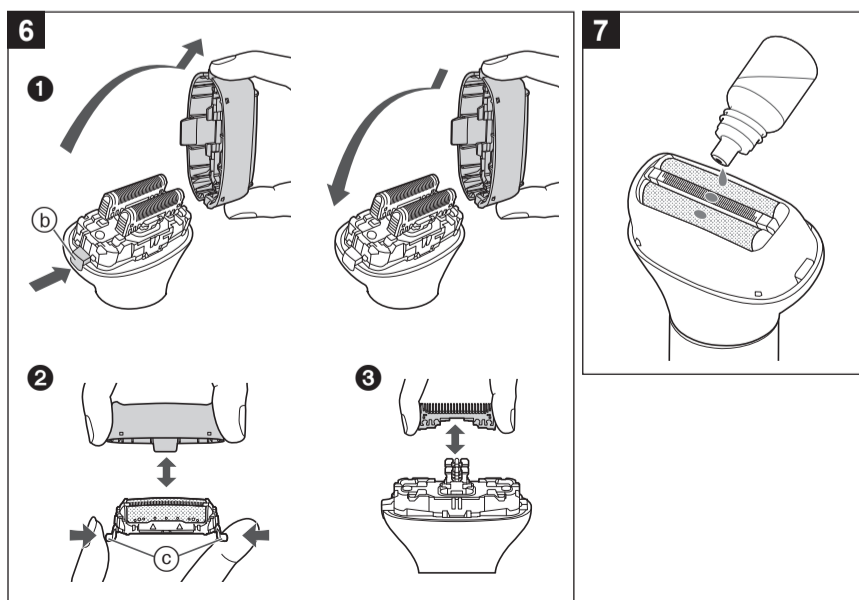
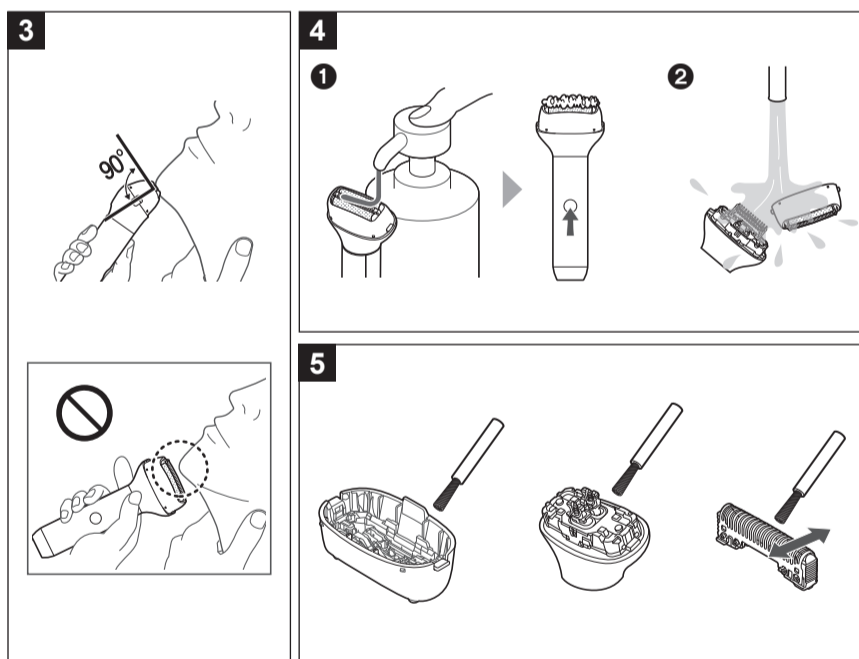
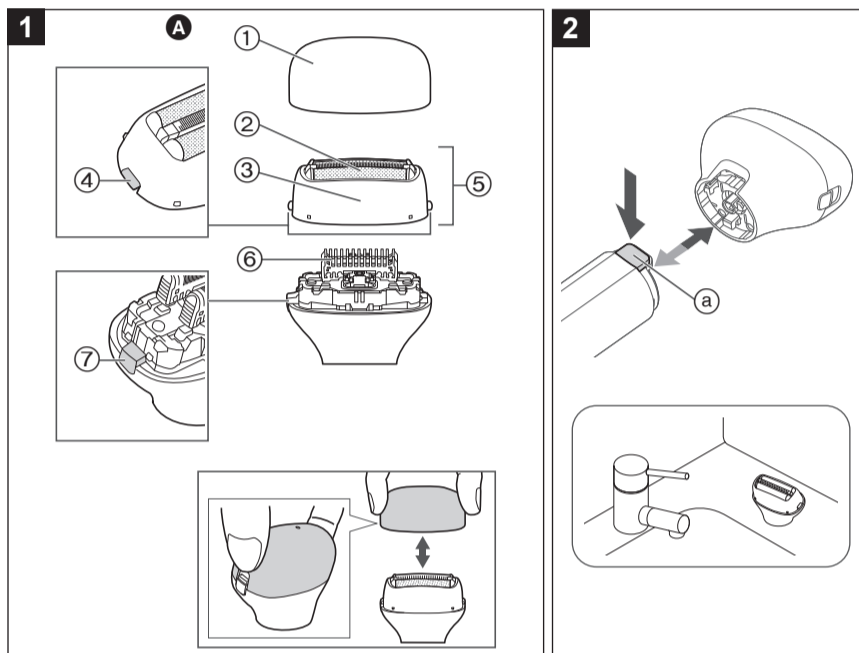
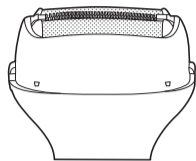


# Panasonic

## Operating Instructions (Household use) Shaver Head Model No. ER-CSF1



### Safety precautions

Follow these instructions.

To prevent accidents, injuries or damage to property, please follow the instructions below.

- The following chart indicates the degree of damage caused by improper operation.

**WARNING** Indicates potential hazard that could result in serious injury or death.

**CAUTION** Indicates potential hazard that could result in minor injury or property damage.

#### WARNING

- Preventing accidents
  - Do not place within reach of children or infants. Do not let them use it.
  - Putting parts or accessories in the mouth may cause an accident or injury.

#### CAUTION

- Protecting the skin
  - Do not use excessive pressure to apply the system outer foil to your lip or other part of your face.
  - Do not apply the system outer foil directly to blemishes or injured skin.
  - Do not touch the blade section (metallic section) of the inner blade.
    - Doing so may cause injury to skin or hand.
  - Do not use this appliance for hair on head or any other part of the body.
    - Doing so may damage the foil causing injury to skin or reduce the life of the system outer foil.
  - Check the system outer foil for cracks or deformations before use.
    - Failure to do so may cause injury to the skin.
  - Do not forcefully press the system outer foil.
    - Also, do not touch the system outer foil with fingers or nails when in use.
    - Doing so may damage the foil causing injury to skin or reduce the life of the system outer foil.
- Note the following precautions
  - Do not share with your family or other people.
  - Doing so may result in infection or inflammation.

### Important information

- Apply the lubrication oil after each cleaning for it will keep the movement of the blade smooth and maintain a comfortable shave.
- Note the following precautions to avoid malfunction or deformation.
  - Do not bring the system outer foil into contact with hard objects.
  - Do not drop or hit against other objects.
  - Store the appliance in a place with low humidity after use.
  - Be sure to place the protective cap on the head when carrying around or storing.

### Parts identification (Fig. 1)

- ▲ Head
  - ① Protective cap
  - ② System outer foil
  - ③ Foil frame
  - ④ System outer foil release buttons
  - ⑤ Outer foil section
  - ⑥ Inner blades
  - ⑦ Foil frame release button

### How to use

- Clean the appliance after use.

**1 Mount the head to the main body until it clicks.**

**2 Turn on the power.**

#### Note

- The use time after a full charge is as follows.
  - ER-CBL1: 50 minutes
  - ER-CBN1: 40 minutes
- (Based on dry using at 20 °C – 30 °C)
- The operating time may differ depending on the frequency of use and the operating method.

#### Quick charge (ER-CBL1 only)

Even though the battery runs out, you can use for 5 minutes after 3-minute charge. (This will differ depending on usage.)

### Removing and mounting the head (Fig. 2)

- Make sure that the main body is turned off.

**Remove the head while pushing the head release button (a).**

- Stand the head when it is removed.

**Mount the head to the main body until it clicks.**

### Shaving (Fig. 3)

- Apply the whole system outer foil perpendicularly against the skin and shave by slowly gliding the appliance over the face against the grain of the beard.
  - The beard under the chin and around the throat can be shaved better by stretching the skin to raise the beard.
  - To prevent damaging the system outer foil, do not shave with only a part of the system outer foil.

### Maintenance

- Make sure that the main body is turned off.
- Lubricate after cleaning and store the head with the protective cap attached.

### How to clean

#### ► With water

- 1 Apply some hand soap and some water to the system outer foil.** (Fig. 4-1)
- 2 Turn on the power and turn off the power after 20 seconds.**
- 3 Remove the head and the outer foil section.**
- 4 Rinse them with running water.** (Fig. 4-2)
- 5 Shake up and down several times to remove the water.**
  - Be careful not to hit the appliance on the sink or any other object while draining the water.
- 6 Wipe off the water with a dry cloth and dry it well.**
  - Allow the head to dry in the shade, avoid direct sunlight.
  - Do not dry the appliance with a dryer or a fan heater.

#### Notes

- Do not wipe with thinner, benzene, alcohol etc. Doing so may cause malfunction, cracking or discoloring of the parts.

#### ► With the cleaning brush

1. Remove the outer foil section and the inner blades.
2. Brush off any hair trimmings from the head and the outer foil section. (Fig. 5)
  - Clean the inner blades using the brush by moving it in direction as illustrated.
  - Do not move the brush perpendicularly against the blades as it will damage the inner blades and affect their sharpness.

## Removing and mounting the outer foil and the inner blades

### Outer foil section (Fig. 6-1)

Remove the frame by pushing the frame release button (b).

Align as illustrated, securely attach the outer foil section to the head until it clicks.

### System outer foil (Fig. 6-2)

• Do not throw away the foil frame.

Press the system outer foil release buttons (c) and pull down the system outer foil.

• Do not press the system outer foil release buttons with excessive force. Doing so may bend the system outer foil, preventing complete attachment to the foil frame.

Align as illustrated, securely attach the system outer foil to the foil frame until it clicks.

### Inner blades (Fig. 6-3)

Remove the inner blades one at a time. Insert the inner blades one at a time.

## Replacement parts

System outer foil: once every year  
Inner blades: once every two years

Replacement part is available at your dealer or Service Center.

System outer foil and inner blades	WES9013
System outer foil	WES9087
Inner blades	WES9068
Lubrication oil	WES003P

## Lubrication

- 1 Apply one drop of lubrication oil to each of the system outer foils. (Fig. 7)
- 2 Turn on the power and allow to run it for approximately 5 seconds.
- 3 Turn off the power and wipe off any excess lubrication oil from the system outer foil with a soft cloth.

## Troubleshooting

Problem	Action
The appliance has become blunt.	Until problems are solved, please follow each procedure as follows;
Operating time is short.	▶ 1. Charge the appliance.
Appliance stopped functioning.	▶ 2. Clean the blade and apply lubrication oil.
	▶ 3. Replace the blade.
Makes a loud sound.	▶ Clean the blade and apply lubrication oil.
	▶ Confirm that the blade is properly attached.
The odor is getting stronger.	▶ This can be improved by cleaning every time after shaving.
Shavings fly out in all directions.	▶ This can be improved by cleaning every time after shaving.
	▶ Clean the inner blades with the brush when shavings are adhering to the inner blades.
System outer foil gets hot.	▶ Apply lubrication oil.
	▶ Replace the system outer foil if it is damaged or deformed.

If the problems still cannot be resolved, contact your dealer or a service center authorized by Panasonic for repair.

## Personal Care & Beauty Care Products

### FOR USA ONLY

#### 30-Day Quality Satisfaction Guarantee

If you are dissatisfied with any Panasonic Personal Care & Beauty Care Products for any reason, simply return it to the place of purchase with a dated proof of purchase, in the original packaging, with all accessories, parts and instructions, within 30 days of the date of purchase, for a full refund, or call Panasonic at 1-800-338-0552. Abuse or misapplication of this product voids the guarantee.

#### PRODUCT REGISTRATION (U.S. customers only)

Go to [www.panasonic.com/register](http://www.panasonic.com/register) and register your product now to receive these benefits:

##### Safety Notification

We contact our customers in case of recall

##### Owner Verification

Proof of purchase in case of product theft or loss

##### Efficient Warranty Service

In case there is a problem with your product

##### Special Offers and Promotions from Panasonic

**FOR YOUR CONVENIENCE, WE HAVE ESTABLISHED A TOLL-FREE (IN USA ONLY) NATIONAL ACCESSORY PURCHASE HOTLINE AT 1-800-332-5368.**

**IN USA CONTACT:**  
Panasonic Corporation of North America  
Two Riverfront Plaza, Newark, NJ 07102-5490

**Service • Assistance • Accessories**

Call 1-800-338-0552 (In USA)  
<https://shop.panasonic.com/personal-care>  
<https://shop.panasonic.com/support>  
<https://www.panasonic.com>

© Panasonic Corporation 2022

Printed in Thailand  
ER971WCSF11X  
F0222-0

Ⓜ EN