

# QUICKSTART GUIDE

P E R F E C T   O N   A N D   O F F   T H E   S T A G E



## M6★PRO

UNIVERSAL-FIT NOISE-ISOLATING  
MUSICIAN'S IN-EAR MONITORS

2 N D   G E N E R A T I O N

model: M6PROG2

[www.MEEaudio.com/M6PRO](http://www.MEEaudio.com/M6PRO)

---

### HOW TO WEAR FIT VIDEO

Before first use, watch our fit video by visiting [MEEaudio.com/PROhelp](http://MEEaudio.com/PROhelp) or scanning the QR code:



---

**IMPORTANT**  
PLEASE READ THIS QUICKSTART GUIDE IN ITS  
ENTIRETY TO ENSURE BEST FIT AND SOUND

---

# QUESTIONS? WE'RE HERE TO HELP!

**Phone Support:** 626-965-1008 x31  
Monday ~ Friday 9am to 5:30pm PST

**Email Support:** [support@MEEaudio.com](mailto:support@MEEaudio.com)  
All emails are responded to within 2 business days

---

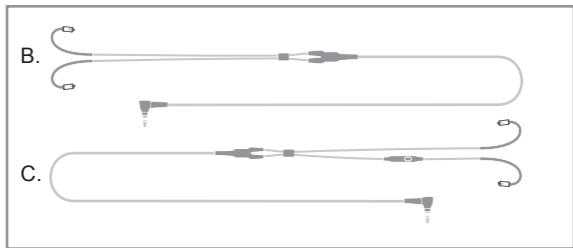
## LIFETIME REPLACEMENT

Things don't always go according to plan in the real world. Whether your headphones get crushed, shredded, fried, misplaced, or carried off by army ants, we've got you covered. Just tell us what happened and we'll give you a new pair at half price, no questions asked (note: we reserve the right to ask for more of a great story).

Visit [www.MEEaudio.com/LRP](http://www.MEEaudio.com/LRP) for more information or to request a replacement.

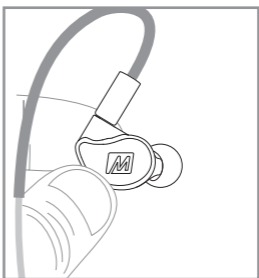
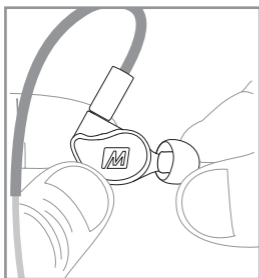
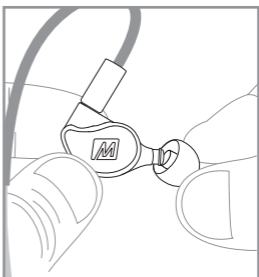
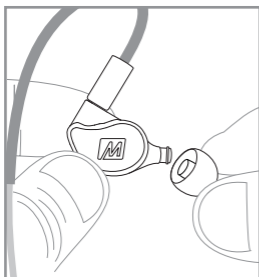


# M6 PRO PACKAGE CONTENTS



- A. M6 PRO In-Ear Monitors
- B. Stereo audio cable
- C. Stereo headset cable
- D. Carrying case
- E. 1/4" (6.3mm) adapter
- F. Comply™ memory foam eartips
- G. Silicone eartips (6 pairs)
- H. Shirt clips (2)
- I. User Manual

## STEP 1 - SELECTING EARTIPS

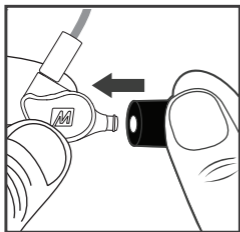


Multiple sets of eartips are included to ensure you get the best fit with your headphones.

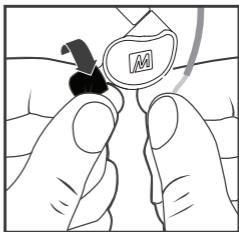
The correct eartips for your ear will allow the earpieces to fit flush, reduce outside noise, and provide good bass response.

Install eartips as shown. Make sure eartips are installed securely before use.

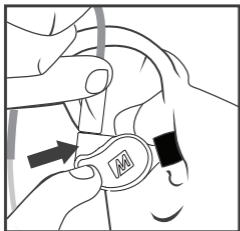
# COMPLY™ MEMORY FOAM EARTIPS



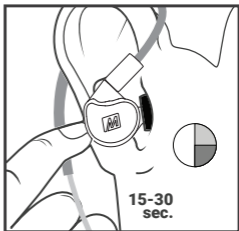
**1. REPLACE EARPHONE TIPS  
WITH COMPLY™ TIPS**



**2. ROLL TIP INTO THIN,  
ROUND CYLINDER**

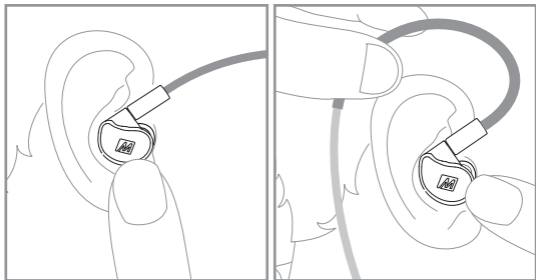
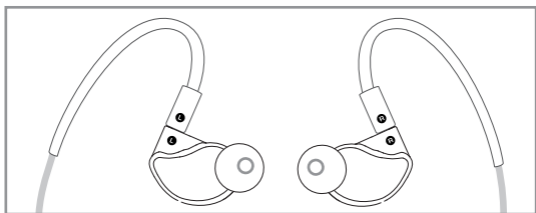


**3. GENTLY INSERT TIP  
INTO EAR**



**4. HOLD TIP IN PLACE  
UNTIL FULLY EXPANDED**

## STEP 2 - WEARING THE M6 PRO

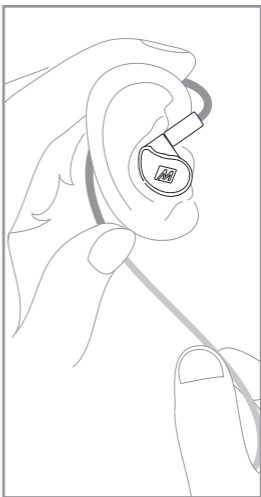
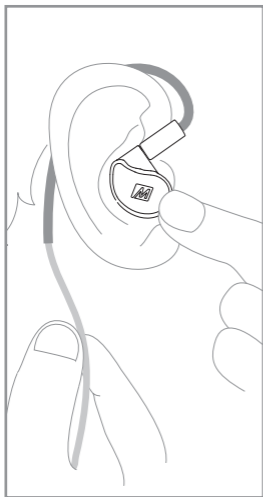


Identify the right and left earpieces.

Straighten the memory wire and put each earpiece in the corresponding ear.

Adjust each earpiece until it fits flush in your ear and the ear tip seals the ear canal.

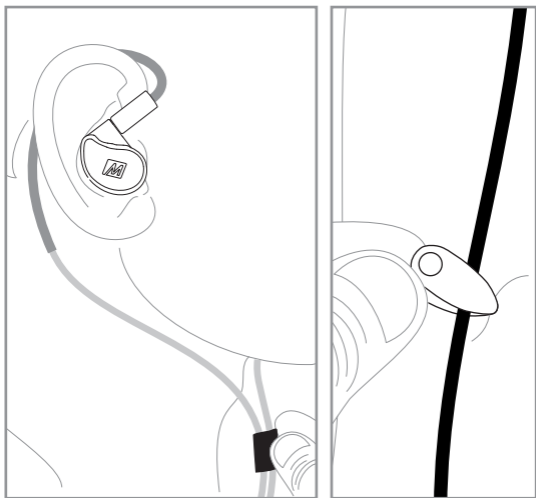
## STEP 2 - WEARING THE M6 PRO (CONT.)



Holding the earpiece in place, bend the memory wire around your ear to achieve a conforming fit.

While pulling the cable gently with one hand, squeeze the memory wire behind your ear with the other hand until the fit is tight and secure.

## STEP 2 - WEARING THE M6 PRO (CONT.)

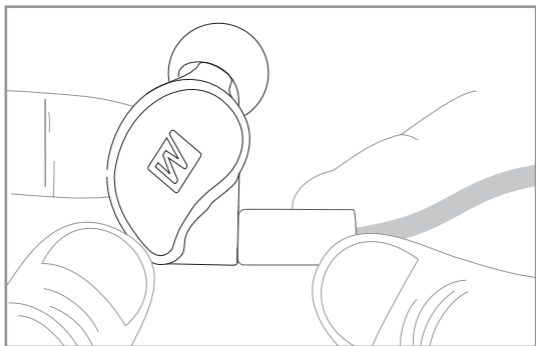


Tighten the sliding cable cinch for the most secure fit.

Use the shirt clip to control cable movement.



## STEP 3 - REPLACING THE CABLE

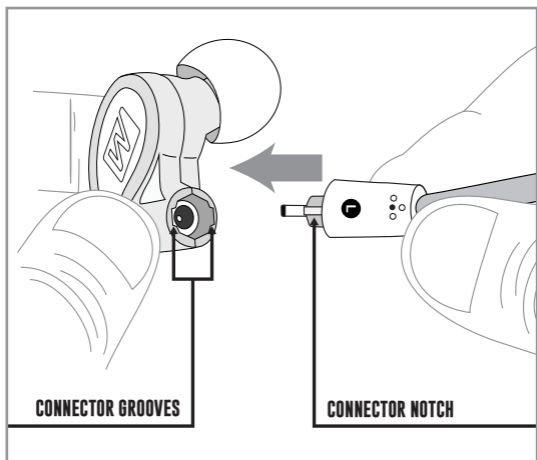


The M6 PRO includes two detachable, interchangeable cables – an audio-only cable and a headset cable with built-in microphone and remote.

Additional cable types, replacement parts, and other accessories are available at [www.MEEaudio.com/PROhelp](http://www.MEEaudio.com/PROhelp).

To detach the cable, grasp the earpiece and cable connector firmly, and pull straight apart without twisting.

## STEP 3 - REPLACING THE CABLE (CONT.)



Attach new cable by lining up the notches on the connectors with the grooves in the earpieces as shown. Push connectors in until they fit securely.

Make sure to attach the cable connector marked "R" to the right earpiece and the connector marked "L" to the left earpiece.

# MICROPHONE & REMOTE USE

The included headset cable features an inline microphone and remote that can be used during phone calls and to control media playback.

**Basic remote operation for Apple® iPhone®, iPad®, iPod®, and most Android™ devices:**



Function	Operation
Answer incoming phone call	Press the remote button
End phone call	Press the remote button
Play media*	Press the remote button
Pause media	Press the remote button
Skip to next track**	Double-press the remote button
Restart the track / previous track**	Triple-press the remote button
Activate SIRI® / Voice control / Voice dialing**	Press and hold the remote button

\*You may need to open the media player application for initial playback to start.

\*\*Not all media players support this functionality.

# ADDITIONAL INFORMATION

## FOR ADDITIONAL SUPPORT

- View FAQs and troubleshooting guides at [MEEaudio.com/Support](http://MEEaudio.com/Support)
- Contact us at [support@MEEaudio.com](mailto:support@MEEaudio.com)

## WARNING

Using headphones at high to moderate volumes for extended periods of time will result in permanent hearing damage. It is advised you keep volume levels moderate to low at all times for your safety. Do not use while driving a car, cycling, operating machinery, or performing other activities that require hearing surrounding sounds.

Keep the device and packaging out of reach of children.

## WARRANTY

The M6 PRO is covered by a 1-year manufacturer warranty. For more information, visit [MEEaudio.com/Support](http://MEEaudio.com/Support).

## HAVE A QUESTION?

Email [support@MEEaudio.com](mailto:support@MEEaudio.com)

---

MEE audio and its logo are registered trademarks of S2E, Inc. All rights reserved.

iPhone®, iPad®, iPod®, and Siri® are registered trademarks of Apple Inc.  
Android™ is a registered trademark of Google Inc.

© 2017 Hearing Components. Comply is a trademark of Hearing Components.