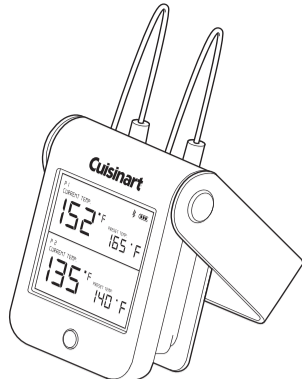


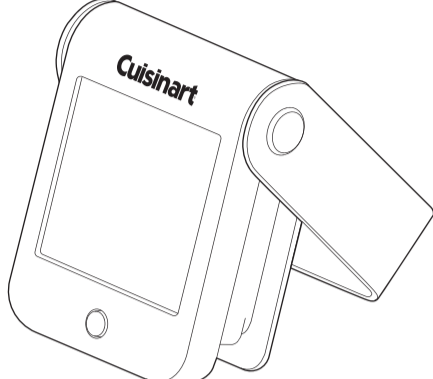
QUICK START GUIDE



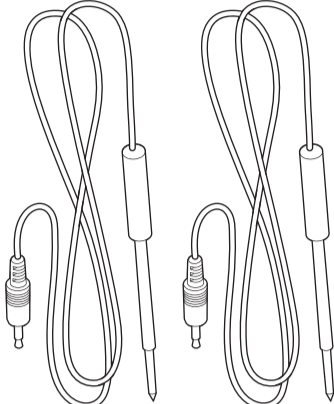
Thank you for purchasing the Bluetooth™ Easy Connect Meat Thermometer by Cuisinart®. The Bluetooth™ Easy Connect Meat Thermometer will help you grill to perfection for every grill session. Keep this quick start guide for future reference. Please read the following instructions and warnings carefully.

SETTING UP YOUR THERMOMETER

COMPONENTS



Bluetooth™ Easy Connect Meat Thermometer Unit

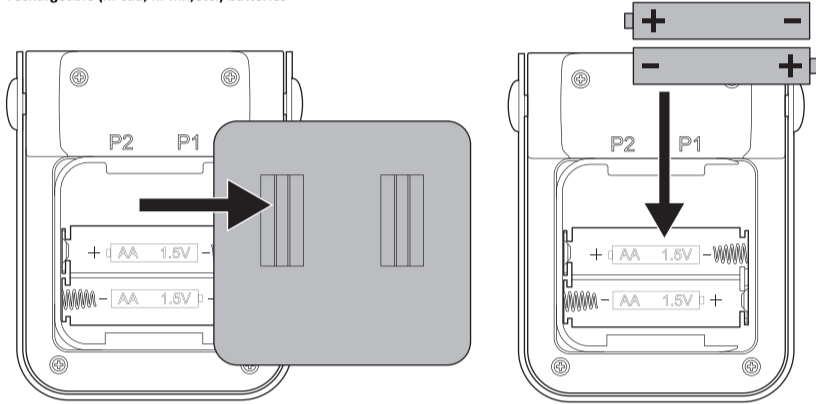


Probes (2)

INSTALLING THE BATTERIES

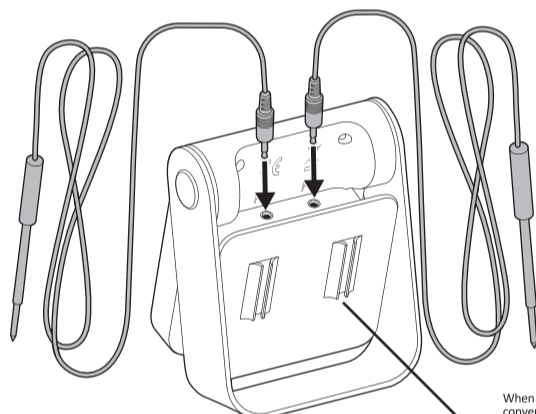
1. Slide the cover off the unit.
2. Install 2 AA batteries.
3. Replace cover.

Do not mix old and new batteries
Do not mix alkaline, standard (carbon-zinc), or rechargeable (ni-cad, ni-mh, etc.) batteries



CONNECTING THE PROBES

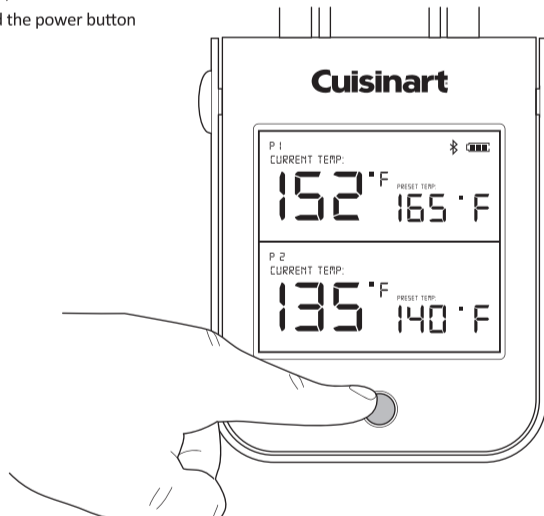
1. Insert the probes into the holes (labeled P1 and P2) on the back of the unit (probes are interchangeable).
2. Once the probes are connected, insert either probe into the center of the thickest portion of the meat you are grilling (preferably away from bone or gristle). Repeat with the second probe to monitor a separate piece of meat on the grill.



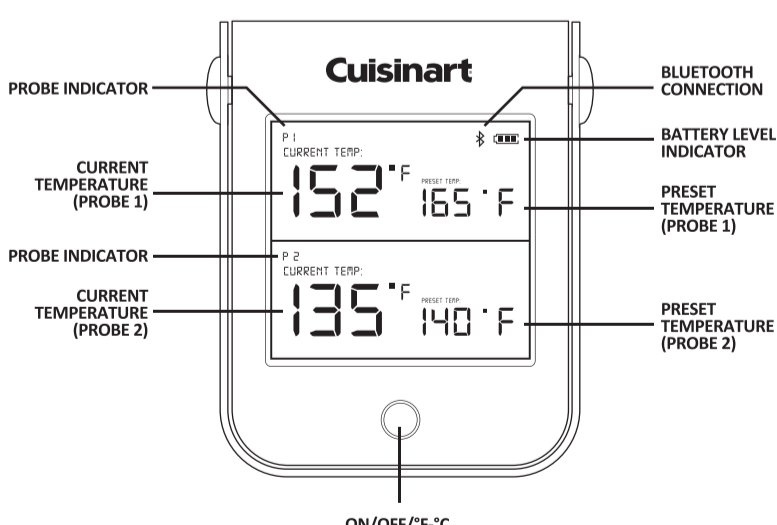
When not in use, probes conveniently snap into holders on the back of the unit. Tip: Wrap both cords together instead of one at a time for easier wrapping.

TURNING THE UNIT ON/OFF

1. Press and hold the power button on the front to turn on. The unit will illuminate.
2. While the unit is illuminated, press the button once to switch between Fahrenheit and Celsius. (If the unit's illumination is off, press once to illuminate, then press again to switch between temperature unit).
3. Press and hold the power button to turn unit off.



GETTING TO KNOW THE THERMOMETER SCREEN



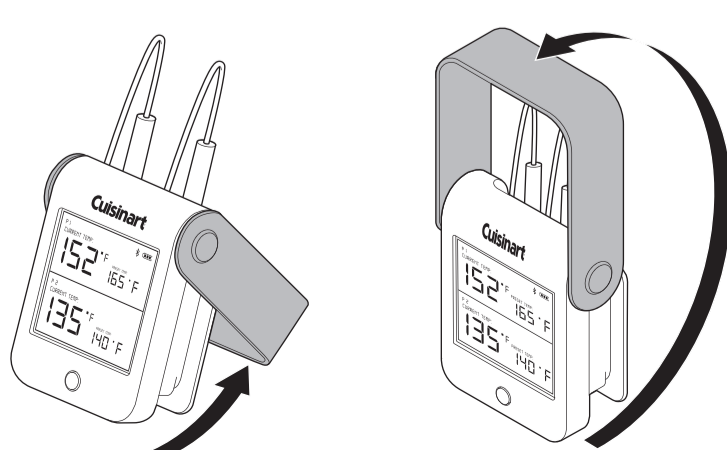
ADJUSTING THE FOOT/HANDLE

The thermometer's foot/handle has 2 positions.

Position 1- Tabletop: Rotate the foot back 60°

Position 2- Hanging: Rotate the foot back 180° (there will be an audible click).

IMPORTANT: Do not rotate the foot/handle forward past the front face of the unit.



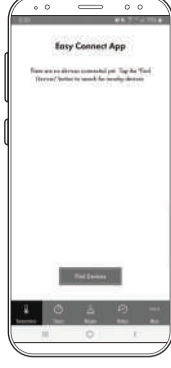
SETTING UP THE APP

DOWNLOAD THE APP

1. Download the Cuisinart Easy Connect BBQ app on App Store or Google Play.
2. Once installed, tap the app badge to launch the app.
3. A "Splash Screen" will appear for a few seconds as the app initially launches. You will be prompted to pair the device to your phone.

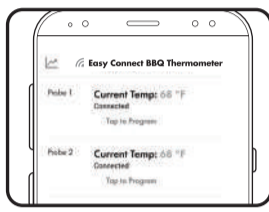
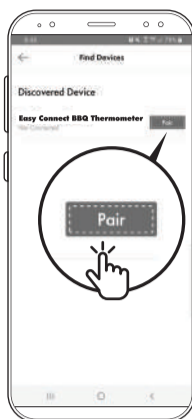
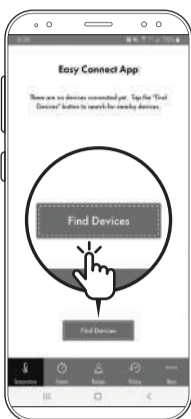


Easy Connect BBQ



PAIRING YOUR DEVICE

1. Select "Find Devices" to scan for nearby Bluetooth devices to pair with. Depending on your device and surroundings, this process may take up to 15 seconds.
2. The names of the compatible devices will be displayed once they are discovered. Select "Easy Connect BBQ Thermometer" to pair the device.
3. Once the thermometer is paired, the Home screen will appear displaying any probe data currently being

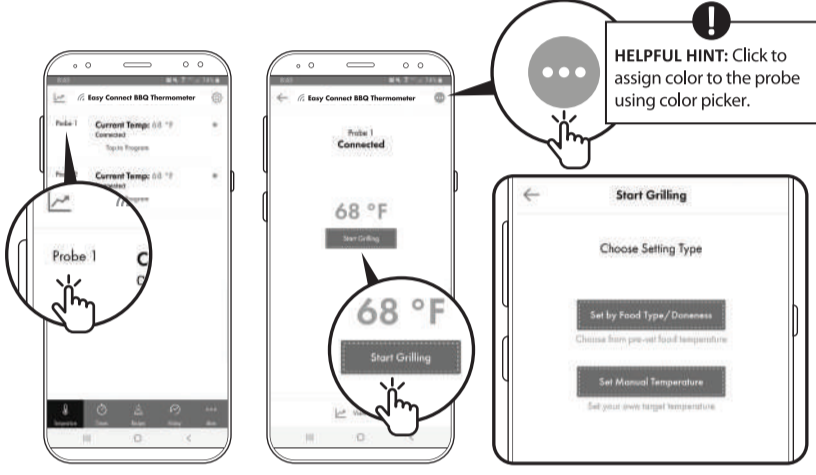


! TROUBLESHOOTING: If unable to pair, try the following:

1. Make sure Bluetooth is enabled on your phone.
2. Take out the batteries on the device and put them back in.
3. Make sure no near by phones are connected to the device. The device can only connect to one phone at a time. (If the Bluetooth Symbol is not flashing on the device, it means a connection has already been established.)
4. If you are using Android, make sure app has access to device location (Google's policy requires location access to be enabled for Bluetooth connection.)

SELECTING THE PROBE

1. "Tap to Program" for either probe to start setting the grill session temperature.
2. Once a probe is selected, its current temperature information will display on the screen. Select "Start Grilling".
3. You will be prompted to select between "Set by Food Type/Doneness" and "Set Manual Temperature" (skip to the appropriate section in this quick start guide).



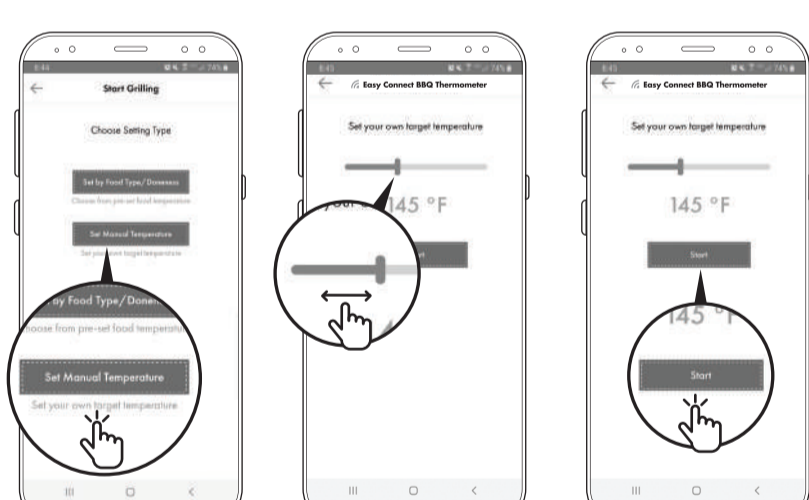
SET BY FOOD TYPE/DONNESS

1. Select "Food Type/Doneness".
2. Select a grilling category from the list.
3. Select from the list of sub-categories.
4. Select how "done" you want your food and select "Start".



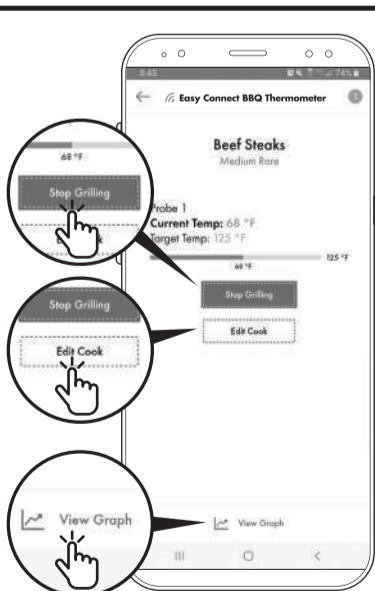
SET TEMPERATURE MANUALLY

1. Select "Set Manual Temperature".
2. Swipe the slide to the left or the right to increase or decrease desired temperature.
3. Select "Start".



GRILL SESSION

1. Once the grill session is started, a detailed view for the selected probe will show the food type ("Steak" in this example), the doness level ("medium rare"), the current temperature of the probe (74 °F), and the target temperature (125 °F). The indicator bar will increase as the desired temperature increases.
2. Select the "Stop Grilling" to stop the current session. This will only stop the grilling session on your device, not the grill itself.
3. Select "Edit Cook" to make changes to the current grilling session.
4. Select "View Graph" to display the temperature for duration of the grilling session.



END OF GRILLING SESSION ALERT

1. Once the probe reaches the target temperature, an alert will sound. Choose the appropriate action on the alert pop up to end grilling session.
2. Now that grilling is complete, be sure to explore all the other great features the Cuisinart Easy Connect BBQ App has to offer.

Be sure to visit www.cuisinart.com/outdoorgrilling

! WARNING: Please keep app running for the full cook, do not force close the app.

DO NOT RETURN PRODUCT TO THE STORE
Before visiting your local retailer, call our customer service department at 1-866-994-6390 from 9:00 am to 5:00 pm Eastern time, Monday through Friday.

© 2019 Cuisinart
Cuisinart® is a registered trademark under license to The Fulham Group.
Distributed by The Fulham Group, Newton, MA 02466 U.S.A. MADE IN CHINA

The Bluetooth® word mark and logos are registered trademarks owned by the Bluetooth SIG, Inc. and any use of such marks by The Fulham Group is under license. Other trademarks and trade names are those of their respective owners.

One Year Limited Warranty
This quality product is warranted to be free from defects in material, construction, and workmanship.

Model # CGWM-043
North American Distributor:
The Fulham Group
Newton, MA 02466

