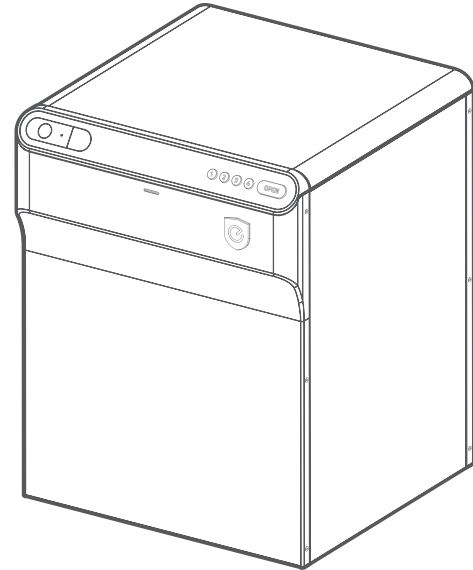




QUICK START GUIDE

SmartDrop



Anker Innovations Limited. All rights reserved. **eufy Security** and **eufy Security Logo** are trademarks of Anker Innovations Limited, registered in the United States and other countries. All other trademarks are the property of their respective owners.

5100500XXXX V01

Table of Contents

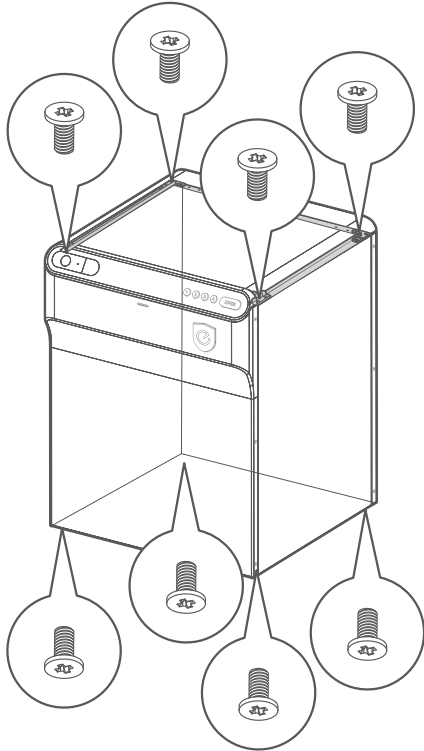
ASSEMBLING SMARTDROP	02
HOW TO USE SMARTDROP	03
POWERING OPTIONS	06
NOTICE	08
CUSTOMER SERVICE	11

ASSEMBLING SMARTDROP

Follow the Assembly Guide in the package to assemble SmartDrop.



Vandal-Proof Design: SmartDrop is secured by bolts on both top and bottom panels, and cannot be disassembled when it is locked or via the bolts on the sides.



HOW TO USE SMARTDROP

STEP 1. Create a Delivery PIN

In the eufy Security app, create a Delivery PIN on **Device Page > Delivery PIN**.

STEP 2. Include Delivery PIN for Your Delivery Address

Add a new address

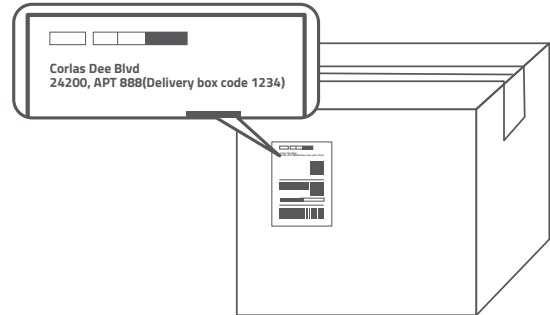
Country/Region
United States

Full name(First and Last name)
John Appleseed

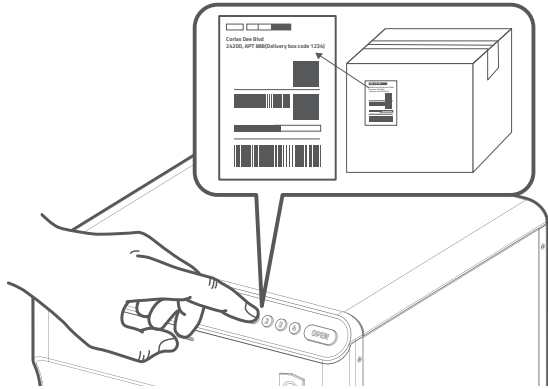
Phone number
(123) 456-7890

Address
Corlas Dee Blvd
24200, APT 888(Delivery box code 1234)

City State Zip Code
Hayward CA 98582

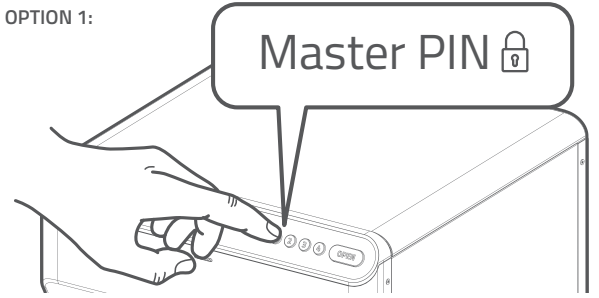


STEP 3. Couriers Deliver Packages with Delivery PIN

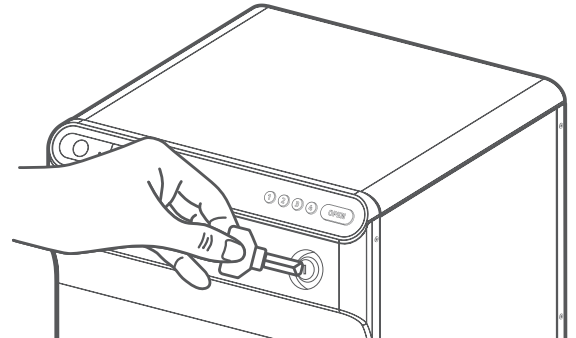


STEP 4. Take Packages Out of SmartDrop after Delivery

OPTION 1:



OPTION 2:

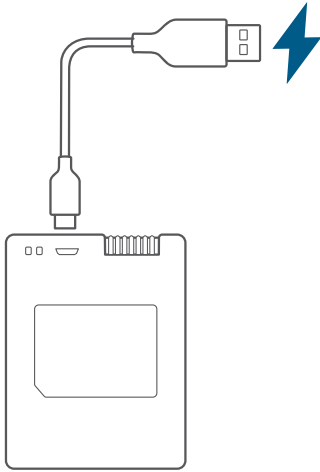


POWERING OPTIONS

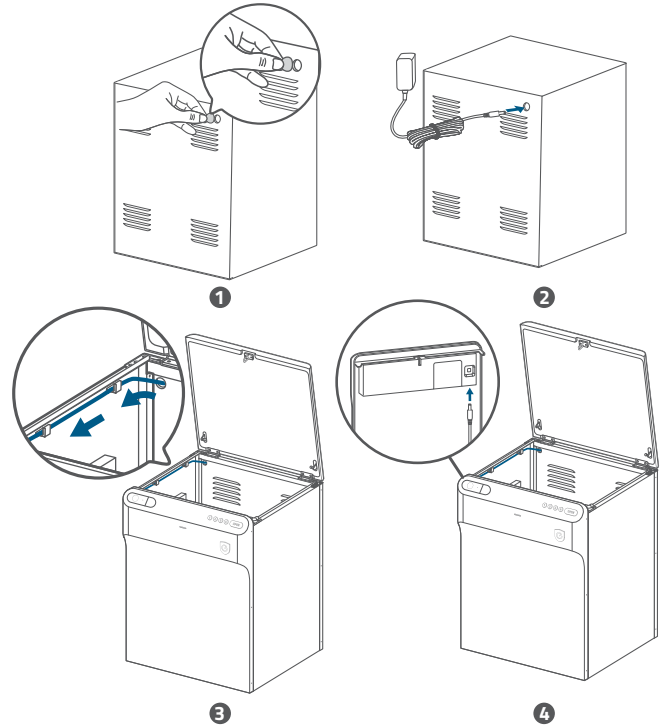
OPTION 1. Battery-powered

Charging the battery

1. Remove the battery from SmartDrop.
2. Charge the battery with the provided cable until the LEDs turn solid blue.



OPTION 2. Wired



NOTICE

FCC Statement

This device complies with Part 15 of the FCC Rules. Operation is subject to the following two conditions: (1) this device may not cause harmful interference, and (2) this device must accept any interference received, including interference that may cause undesired operation.

Warning: Changes or modifications not expressly approved by the party responsible for compliance could void the user's authority to operate the equipment.

Note: This equipment has been tested and found to comply with the limits for a Class B digital device, pursuant to Part 15 of the FCC Rules. These limits are designed to provide reasonable protection against harmful interference in a residential installation.

This equipment generates uses and can radiate radio frequency energy and, if not installed and used in accordance with the instructions, may cause harmful interference to radio communications. However, there is no guarantee that interference will not occur in a particular installation. If this equipment does cause harmful interference to radio or television reception, which can be determined by turning the equipment off and on, the user is encouraged to try to correct the interference by one or more of the following measures: (1) Reorient or relocate the receiving antenna. (2) Increase the separation between the equipment and receiver. (3) Connect the equipment into an outlet on a circuit different from that to which the receiver is connected. (4) Consult the dealer or an experienced radio/ TV technician for help.

FCC Radio Frequency Exposure Statement

The device has been evaluated and following general RF exposure requirement. The device can be used in portable exposure condition without restriction.

The device has been tested and following SAR limits, users can obtain American information about RF exposure and compliance. This equipment should be installed and operated with minimum distance 0mm between the radiator & your body.

Notice: Shielded cables

All connections to other computing devices must be made using shielded cables to maintain compliance with FCC regulations.

The following importer is the responsible party

Company Name: POWER MOBILE LIFE, LLC

Address: 400 108th Ave NE Ste 400, Bellevue, WA 98004-5541

Telephone:1-800-988-7973

IC Statement

This device complies with Industry Canada licence-exempt RSS standard(s). Operation is subject to the following two conditions:

- (1) this device may not cause interference, and
- (2) this device must accept any interference, including interference that may cause undesired operation of the device.

Le présent appareil est conforme aux CNR d'Industrie Canada applicables aux appareils radio exempts de licence. L'exploitation est autorisée aux deux conditions suivantes:

- (1) l'appareil n' doit pas produire de brouillage, et
- (2) l'utilisateur de l'appareil doit accepter tout brouillage radioélectrique subi, même si le brouillage est susceptible d'en compromettre le fonctionnement.

This Class B digital apparatus complies with Canadian ICES-003.

Cet appareil numérique de la classe B est conforme à la norme NMB-003 du Canada.

<CE>This product complies with the radio interference requirements of the European Community.

Declaration of Conformity

Hereby, Anker Innovations Limited declares that the product type T8790 is in compliance with the essential requirements and other relevant provisions of Directive 2014/53/EU. For the declaration of conformity, visit the Web site: <https://uk.eufylife.com/> .

The adapter shall be installed near the equipment and shall be easily accessible. Do not use the Device in the environment at too high or too low temperature, never expose the Device under strong sunshine or too wet environment. The suitable temperature for the product and accessories is -20°C to 60°C.

When charging, please place the device in an environment that has a normal room temperature and good ventilation.

It is recommended to charge the device in an environment with a temperature that ranges from 5°C~25°C.

Please make sure to use only the charger provided by the manufacturer. When the manufacturer does not provide the charger, please use a charger that complies

with EU regulations, otherwise it may cause danger and violate the authorization of the product and warranty terms.

The charger for T8790 must be indoor use only. The charger's output voltage/current is 12Vdc/2A. The plug considered as disconnect device of adapter

CAUTION RISK OF EXPLOSION IF BATTERY IS REPLACED BY AN INCORRECT TYPE.
DISPOSE OF USED BATTERIES ACCORDING TO THE INSTRUCTIONS

RF exposure information:

The Maximum Permissible Exposure (MPE) level has been calculated based on a distance of $d=20$ cm between the device and the human body. To maintain compliance with RF exposure requirement, use product that maintain a 20cm distance between the device and human body.

Wifi Operating Frequency Range:2412~2472 MHz(2.4G); Wifi Max Output Power:19 dBm(ERIP);

Bluetooth Operating Frequency Range:2402~2480 MHz; Bluetooth Max Output Power:8 dBm(EIRP)

Anker Innovations Deutschland GmbH | Georg-Muche-Strasse 3, 80807 Munich, Germany

<RECYCLE>Your product is designed and manufactured with high quality materials and components, which can be recycled and reused.

<BIN>This symbol means the product must not be discarded as household waste, and should be delivered to an appropriate collection facility for recycling. Proper disposal and recycling helps protect natural resources, human health and the environment. For more information on disposal and recycling of this product, contact your local municipality, disposal service, or the shop where you bought this product.

<UKCA>This product complies with the radio interference requirements of the United Kingdom

Declaration of Conformity

Hereby, Anker Innovations Limited declares that this product is in compliance with Radio Equipment Regulations 2017. The full text of the UK declaration of conformity is available at the following internet address: <https://uk.eufylife.com>

Anker Techn ology (UK) Ltd | Suite B, Fairgate House, 205 Kings Road, Tyseley, Birmingham, B11 2AA, United Kingdom

CUSTOMER SERVICE

Warranty

12-month limited warranty

Call Us

United States

+1 (800) 988 7973 Mon-Fri 9AM-5PM (PT)

United Kingdom

+44 (0) 1604 936 200 Mon-Fri 6AM-11AM (GMT)

Germany

+49 (0) 69 9579 7960 Mon-Fri 6:00-11:00

Email Us

Customer Support: support@eufylife.com

Anker Innovations Limited

Room 1318-19, Hollywood Plaza, 610 Nathan Road, Mongkok, Kowloon, Hong Kong



@EufyOfficial



@EufyOfficial



@EufyOfficial