



tile

Tile Pro Series
Reviewer's Guide

Contents

Meet the Tile Pro Series

How Tile Works

Product Specs

Range Testing Protocol

Meet the Tile Pro Series

THE NEW PRO SERIES

tileSport

Rugged and waterproof, the all-new Tile Sport attaches to anything and is ready to find your things no matter where life takes you.



THE NEW PRO SERIES

tileStyle

Find your things in style. Never lose what matters most with the new Tile Style, the perfect blend of form and function.

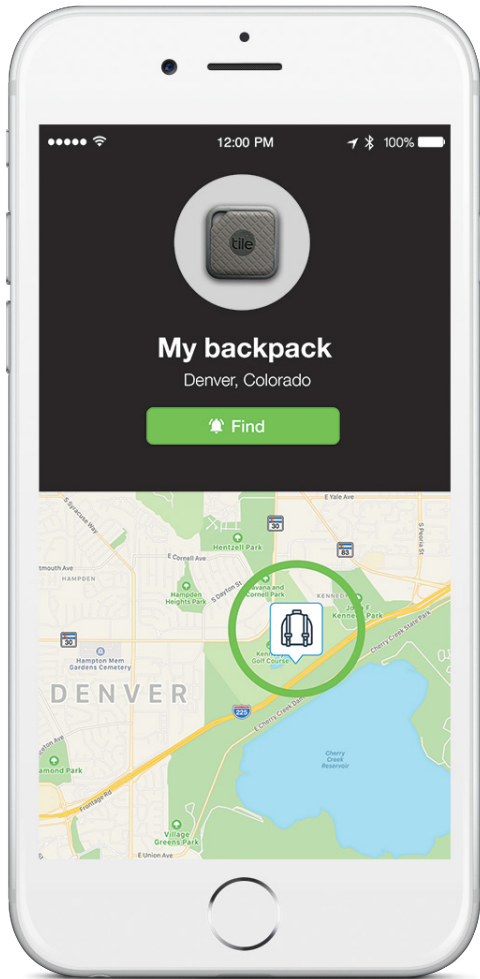


How Tile Works

You can locate your item via the Tile app on select iOS or Android phones. You can also use your Tile to find your phone.

- **Locate by sound.** Ring your Tile from the app or double press your Tile to ring your phone - even on silent.
- **Last place seen.** The app always shows the last time and place it saw your Tile. Simply open the app to view the map.
- **Community Find.** If your Tile moved location since the app last saw it, tap the Notify When Found button in the app. This will securely and anonymously put all other Tile apps on the lookout for your Tile. You'll receive an alert when another Tiler comes within range of your item. We call this feature Community Find.





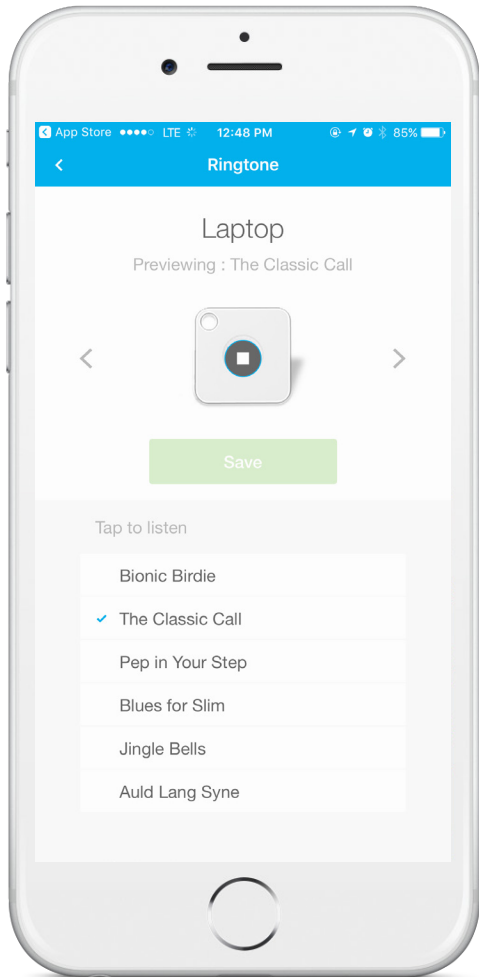
Setting Up Your Tile

1. Turn on Bluetooth on your phone under settings.
2. Download the Tile app from the App Store or Google Play Store.
3. Register your account.
4. Setup your first Tile by pressing the “+” sign in the left corner.
5. Press the button on the front of your Tile to pair it to the app.

Ringling Your Tile*

1. Open up the Tile app to find your list of Tiles.
2. Tap the Tile that you are looking for and want to ring.
3. Tap the green “Find” button.
4. Listen for your Tile tune.
5. After you’ve found your Tile, tap the blue “Done” button to make your Tile stop ringing.

* Note: You need to be in Bluetooth range (up to 200 ft.) and connected to your Tile to ring it. You can tell if you’re in range by the color of the ring surrounding the Tile icon in your app. If it’s green, you’re good to go!



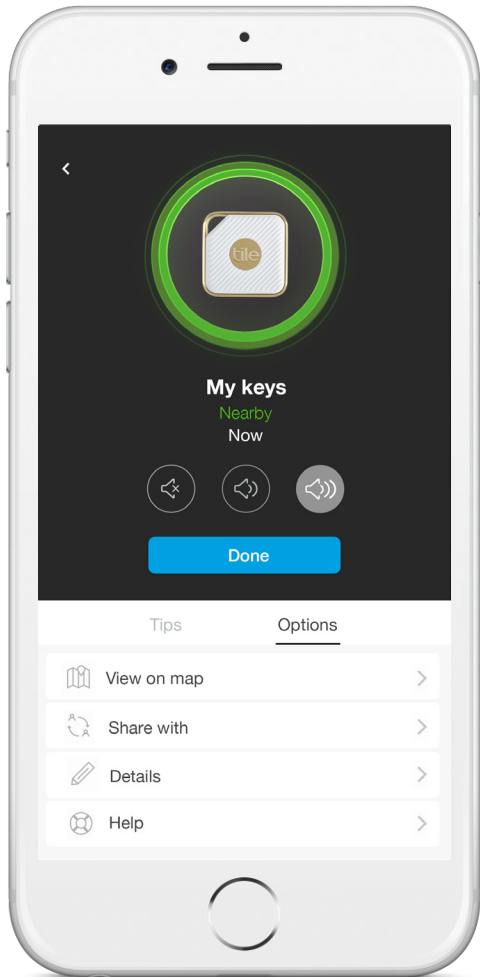
Ringtone Your Phone (Reverse Ring)

1. Double press the circle button on your Tile. If your lost phone is within Bluetooth range*, it will ring loudly—even on silent.
2. If your phone is lost and it's far away, finding it is still easy. Log into your account on our website to see your phone's last known location, to make it ring, or to send a lock-screen message to whomever might have found it.

* Note: Phone must be within Bluetooth range in order to reverse ring your phone

Selecting Your Tile Ringtone

1. Tap the Tile you would like to select a ringtone for.
2. Tap "Options", then "Details" and then "Ringtone".
3. Preview the available ringtones and tap "Save" for your favorite.
4. Your ringtone will begin to download onto your Tile, which may take up to 20 seconds.



Volume Control

1. The Tile Pro Series offers three volume selections - silent, normal and loud. Once you've selected a Tile, you will be able to adjust its volume when it's in "Find" mode.

Using the Proximity Meter

1. If you're within Bluetooth range, use the proximity meter to visually guide you to your Tile.
2. Select a connected Tile and then tap the green circle around it.
3. The rings indicate signal strength from your Tile. Take a few steps around you. If you're going in the right direction, the rings will fill, indicating that the signal is getting stronger and that the Tile is nearby.

Product Specs

Tile Style

Size: 37.5mm x 37.5mm x 5.9mm
Weight: 11g
Color: White and champagne
Waterproof: IP68 (1.5m for 30 mins)
Battery: 1 year non-replaceable.
Eligible for reTile program



Tile Sport

Size: 40mm x 40mm x 5.9mm
Weight: 15g
Color: Dark slate and graphite
Waterproof: IP68 (1.5m for 30 mins)
Battery: 1 year non-replaceable
Eligible for reTile program



Range Testing Protocol

Introduction

This section aims to provide recommended guidelines for an accurate, controlled test of Bluetooth tracker range. Bluetooth range can be impacted by a number of different variables including the operating environment, humidity, whether or not the measurement was taken near a body of water, WiFi traffic, and foot traffic in between the Bluetooth connections. It's important to control these variables as best as possible so that Bluetooth range can be quantified consistently.

Materials

1. Something to put the Bluetooth devices on (either a small table or chair, but preferably something without metallic materials).
2. Laser rangefinder to accurately measure distance.

Testing Procedure

1. Locate an outdoor environment that allows at least 150 meters of line of sight (a straight line along which an observer has unobstructed vision between him/her and the Bluetooth device).
2. We suggest two people participate in range testing. One person oversees the Bluetooth tracking product while the other holds a smartphone that is wirelessly connected to the Bluetooth product.
3. With the Bluetooth device on a small table, and ensuring that the smartphone is connected to the tracker, the smartphone bearer walks away until Bluetooth disconnection occurs.
4. Figure 1 (below) Illustrates the disconnected, connecting, and connected states of the Tile app.

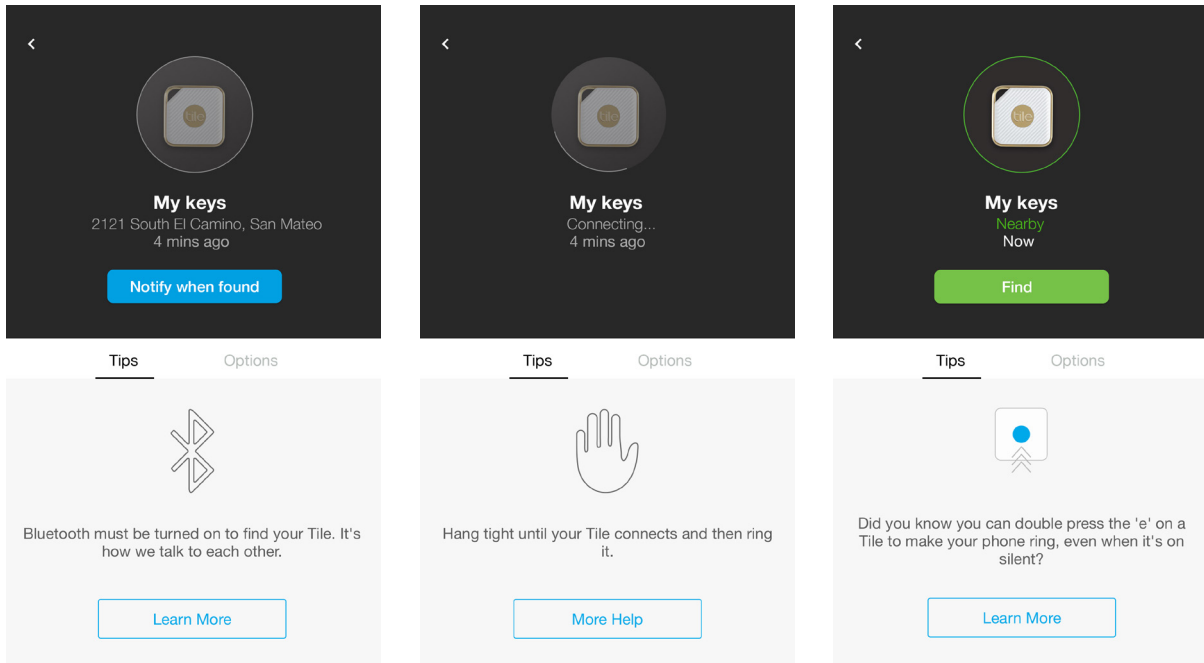


Figure 1. *Tile Connection Stages*

1. After disconnection, walk toward the Bluetooth tracker until it reacquires connection indicated by Figure 1c. Using the rangefinder, record this distance. From our experience, the connected until disconnected range is greater than the reacquisition range.
2. To ensure connection reliability, take 5 steps toward the Bluetooth device. If the Tile app indicator goes back to the connecting state (dotted green circle Figure 1b), then that means the connection was broken while walking toward the device. The initial connection could have been caused by constructive multipath interference and is therefore not indicative of the device’s actual range. You should disregard that data point and continue walking towards the device.
3. Obtain at least 5 “connection reacquisition distance” measurements.
4. Table 1 (below) illustrates an example of how data should be recorded.

Table 1. Pro Series vs. Mate Acquisition Distances Example Table

Trial	Pro Series (meters)	Mate (meters)
#1		
#2		
#3		
#4		
#5		
#6		
#7		
#8		
#9		
#10		
Avg. of Above Data:		
Standard Deviation:		

The average and standard deviation should be calculated for all the range measurements of a device. The standard deviation is important because it quantifies the variance of the data.

Additional Information

1. Range is dependent on smartphone model.
2. Range will be degraded if a person walks in-between the bluetooth connection.
3. Example of outdoor range testing location (Figure 2).



Figure 2. *Beach Park Recreational Path*

www.thetileapp.com

Media Contact

Sherry Shen,
Director of Communications
sherry.shen@thetileapp.com
415-314-1759

Full press kit available at thetileapp.com/presskit