



DOG CARE

LED Dog Collar User Manual



Model: LC01
www.dogcare.net

IMPORTANT SAFETY INSTRUCTIONS

BEFORE USING THIS PRODUCT READ ALL INSTRUCTIONS AND WARNINGS IN THIS MANUAL.

⚠ WARNING

To reduce the risk of burns, fire, electric shock, or injury to persons:

1. NOT A TOY. This product is not intended for use by, on, or near young children, invalids or infirm persons with reduced physical, sensory, or reasoning capabilities, or lack of experience and knowledge, unless they have been given supervision or instruction concerning use of the product by a person responsible for their safety. To reduce the risk of injury, close supervision is necessary when the product is used near children.
2. CHOKING HAZARD, NOT A CHEW TOY. Ingestion of this product can result in serious injury. Discontinue use if damaged.
3. Do not immerse the product in water.
4. Do not use this product for anything other than its intended purpose. This product is not for traction and should not be used with a leash. Attach a leash to a separate regular collar or a harness.
5. This product is not recommended for puppies under 3 months of age. Not for use during containment or crating.
6. Use only the USB cable provided for charging this product. Do not use with a damaged cable.
7. Do not store or charge near heat sources.
8. Use only as described in this manual. Do not carry out any maintenance other than shown in this manual. Do not use attachments not recommended by DogCare.
9. To ensure water resistance, cover the rubber plug of the charging port after each charge.
10. Contact DogCare customer support when a service or repair is required. Do not disassemble the product as incorrect reassembly may result in an electric shock or fire.
11. Contact DogCare customer support to replace or recycle the battery. Do not attempt to open the product to remove or replace the built-in battery. The battery used in this product may present a risk or chemical burn if mistreated.
12. Once the product is charged, unplug the cable in a timely manner. When not in use, the product should be unplugged, stored in a safe and dry location, out of reach of children.
13. The ambient temperature range for operation and charging should be 32 °F to 104 °F.



NOT A TOY. Close supervision is necessary when used near children.



CHOKING HAZARD, NOT A CHEW TOY. Ingestion of this product can result in serious injury.



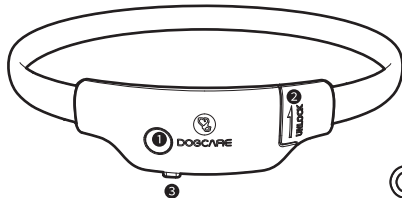
This collar is not for traction. Attach a leash to a separate regular collar or a harness.



To ensure water resistance, cover the rubber plug of the charging port after each charge.

READ AND SAVE THESE INSTRUCTIONS

In the Box

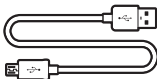


LED dog collar



User manual

- 1 Power/Mode button
- 2 Collar buckle
- 3 Charging port and rubber plug

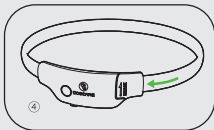
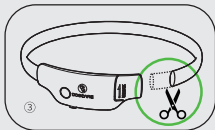
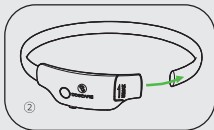
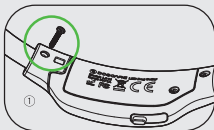


USB cable

Quick Start

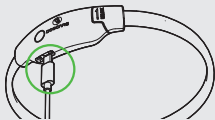
Resizing

- 1 Unscrew the screw at the collar buckle.
- 2 Pull the LED collar out of the buckle.
- 3 Trim the LED collar with scissors to a desired length.
- 4 Reinsert the LED collar into the buckle, then tighten the screw.



Charging

- Fully charge the LED collar before using it for the first time.
- Open the rubber plug on the charging port and charge the collar with the included USB cable.
- To ensure water resistance, cover the rubber plug of the charging port after each charge.



Battery is fully charged when the LED collar is steady green.



Battery is empty and needs charging when the LED collar lights off. Upon pressing the button, the collar will flash quickly in red to alert you.



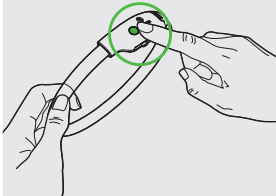
The LED collar will flash slowly in red during charging.



It takes approximately 2 hours to fully charge the LED collar.

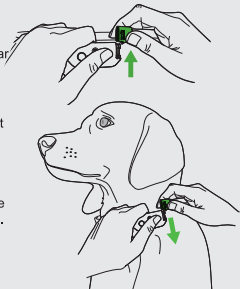
Powering on/off

- Press and hold the button for 2 seconds to turn the collar on or off.



Putting on

- Slide the LED collar out of the buckle from bottom to top to unlock it.
- Once you have put the LED collar on your dog, slide the collar into the buckle from top to bottom. The buckle will click into place.



Light Modes

Explore the 7 light modes of your LED collar. You can cycle between the modes by pressing the button.



Glowing green



Glowing red



Glowing fluorescent



Breathing green



Breathing red



Breathing fluorescent



Flashing colors

Cleaning and Maintenance

- If the LED collar is stained, wipe it with a damp cloth. Do not immerse the collar in water for cleaning.
- When not in use, the LED collar should be unplugged, stored in a safe and dry location, out of reach of children.



Troubleshooting

Problem	Solutions
Will not charge	<ul style="list-style-type: none">▪ Check that the households electrics are on—test by plugging in another appliance.▪ Check that the outlet is working—test the LED collar in a different USB port.▪ Check the USB cable for signs of damage. If damaged, stop using and replace the cable.▪ If the battery voltage is too low, it may take some time after connection before the collar begins to flash in red.
Lighting time is too short	<ul style="list-style-type: none">▪ Make sure that the LED collar is fully charged before each use.▪ Check if the button was accidentally pressed, resulting in the collar being turned off.
Will not light up	<ul style="list-style-type: none">▪ Check if the collar has been turned on. Press and hold the button for 2 seconds and check if the collar lights up.▪ Check if the collar has power. Connect the collar to the USB cable to check if it lights up.

Live Chat

Live chat with us 24/7 on

www.dogcare.net or on Facebook [@dogcareglobal](https://www.facebook.com/dogcareglobal).



◀ Scan the QR code to access

Phone

1-833-220-1900

Our helpline hours:

- 9am – 9pm EST, 6am – 6pm PST
- 7 days a week

Email

dogcare@afterservice.vip

To help us address your inquiry as quickly as possible, please include the following in your email:

- Your name
- Phone number
- Product name or model number

We will respond to your inquiry within 12 hours.

Guarantee Terms and Conditions

DOG CARE CUSTOMER CARE

Thank you for choosing to buy a DogCare product.

Your DogCare product will be covered for parts (excluding the battery) and labor for 12 months from the date of purchase, subject to the terms of the guarantee. However, indispensable legal rights of the final consumer under applicable national legislation governing the sales of consumer goods are not affected by the terms of the guarantee.

LIMITED 12-MONTH WARRANTY

Terms and conditions of the DogCare 12-month limited guarantee.

WHAT IS COVERED

Your DogCare product is warranted against original defects in materials and workmanship for a period of 12 months from the date of purchase or delivery, when used in accordance with the DogCare User Manual. Please retain your proof of purchase.

This warranty provides, at no extra cost to you, all labor and parts (excluding the battery) necessary to ensure your product is in proper operating condition during the warranty period (if any part is no longer available or out of manufacture, DogCare will replace it with a functional replacement part).

This warranty is only valid if the product is used in the country in which it was sold.

WHAT IS NOT COVERED

DogCare shall not be liable for costs, damages or repairs incurred as a result of, due to, or from:

- Accidental damage, faults caused by negligent use or case, misuse, neglect, careless operation or handling of the product which is not in accordance with the DogCare User Manual.
- Use of the product for anything other than normal domestic household purposes.
- Use of parts not assembled or installed in accordance with the DogCare User Manual.
- Use of parts and accessories other than those produced or recommended by DogCare.
- Faulty installation (except where installed by DogCare).
- Repairs or alterations carried out by unauthorized parties or agents.
- Normal wear and tear.
- Reduction in battery discharge time due to battery age or use.

If you are in any doubt as to what is covered by your warranty, please contact DogCare.

WARRANTY LIMITATIONS AND EXCLUSIONS

To the fullest extent permitted by applicable law, any implied warranties relating to your product including but not limited to warranty of merchantability or warranty of fitness for a particular purpose, are limited to the duration of this warranty.

To the fullest extent permitted by applicable law, your remedy for breach of this warranty is limited to the warranty service described below. DogCare will not be liable for any consequential damages or incidental damages you may incur in connection with your purchase and use of your product.

This limited warranty gives you specific legal rights. You may also have other rights which vary by State. This limited warranty is not transferable.

CONFORMITY INFORMATION

This equipment has been tested and found to comply with the limits for a Class B digital device, pursuant to part 15 of the FCC Rules. These limits are designed to provide reasonable protection against harmful interference in a residential installation. This equipment generates, uses and can radiate radio frequency energy and, if not installed and used in accordance with the instructions, may cause harmful interference to radio communications. However, there is no guarantee that interference will not occur in a particular installation. If this equipment does cause harmful interference to radio or television reception, which can be determined by turning the equipment off and on, the user is encouraged to try to correct the interference by one or more of the following measures:

- Reorient or relocate the receiving antenna.
- Increase the separation between the equipment and receiver.
- Connect the equipment into an outlet on a circuit different from that to which the receiver is connected.
- Consult the dealer or an experienced radio/TV technician for help.

Changes or modifications not expressly approved by the party responsible for compliance could void the user's authority to operate the equipment.

Product Specifications

	18"	26"
Product Name	DogCare LED Dog Collar	
Model	LC01	
Dimensions	18" x 1" x 0.6"	26" x 1" x 0.6"
Weight	1.4 oz	1.7 oz
Collar Maximum Length	18"	26"
Battery Type	Built-in rechargeable lithium-ion battery	
Input	DC 5V/1A	
Charging Interface	Micro USB	
Water Resistance	Waterproof	
Operating Ambient Temperature	32 °F to 104 °F	