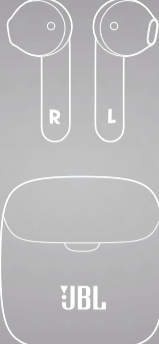


# QUICK START GUIDE

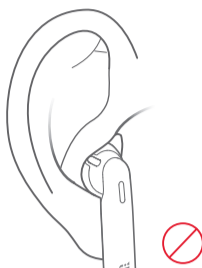
TUNE220TWS



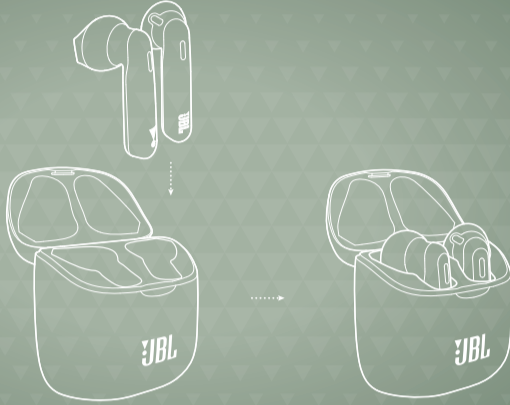
## WHAT'S IN THE BOX



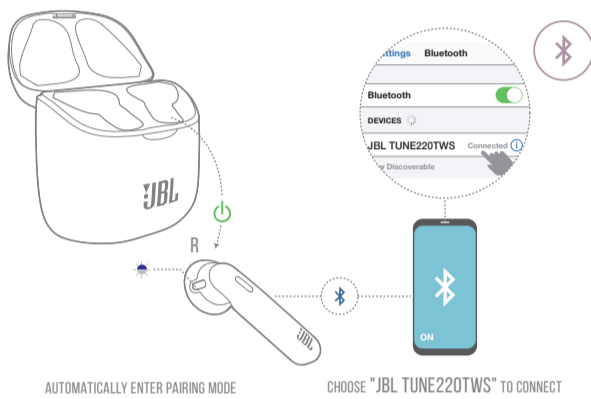
## HOW TO WEAR



## FIRST TIME USE



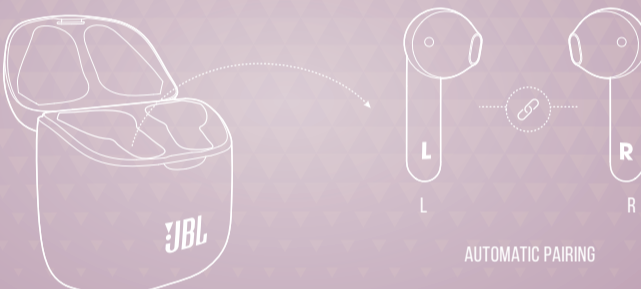
## POWER ON & CONNECT



AUTOMATICALLY ENTER PAIRING MODE

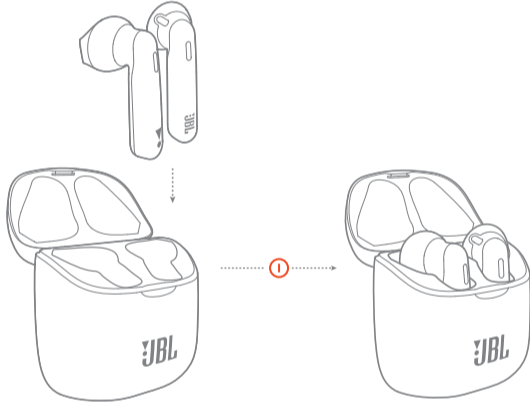
CHOOSE "JBL TUNE220TWS" TO CONNECT

## PAIRING



AUTOMATIC PAIRING

## POWER OFF



## MANUAL CONTROLS

POWER ON & CONNECT TO DEVICE

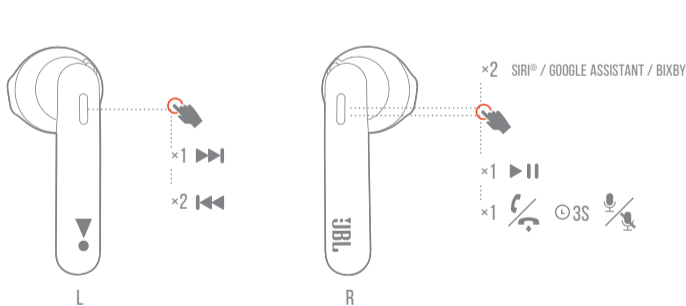
RECONNECTING LEFT & RIGHT

POWER ON

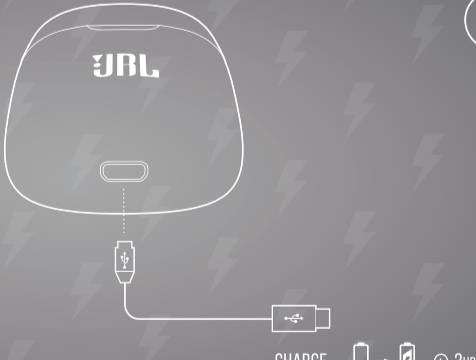
POWER OFF



## BUTTON COMMAND

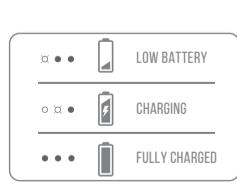


## CHARGING



CHARGE

## LED BEHAVIORS



## TECH SPEC

Driver Size:	20 mm Dynamic driver
Frequency Response:	20 Hz – 20 kHz
Sensitivity:	105 dB SPL
Maximum SPL:	98 dB SPL
Microphone sensitivity:	-30 dBV@1 kHz/Pa
Impedance:	32 ohm
Bluetooth transmitted power:	12 dBm
Bluetooth modulation:	GFSK / π/4DQPSK / 8DPSK
Bluetooth frequency:	2.402 GHz – 2.48 GHz
Bluetooth profile version:	A2DP 1.3, AVRCP 1.5, HFP 1.6
Bluetooth version:	5.0
Headset battery type:	Lithium-ion battery (22 mAh / 3.85 V)
Charging case battery type:	Lithium-ion battery (410 mAh / 3.85 V)
Power supply:	5V === 1.0 A
Charging time:	<2 hrs from empty
Music playtime with BT on:	3 hrs
Total music playtime with charging case:	19 hrs
Weight:	57 g

