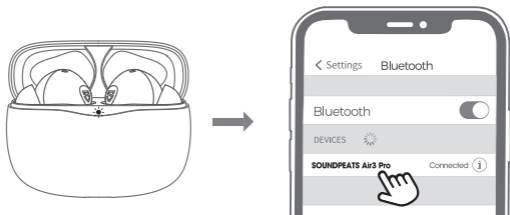


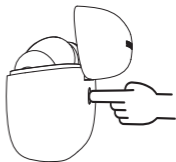
Pairing



1. Open the charging case lid, both earbuds will power on automatically when the led indicator of charging case is solid green. Keep the case lid in open status, both earbuds will enter into pairing mode.
2. Activate the Bluetooth on your device and choose "SOUNDPEATS Air3 Pro" to connect.

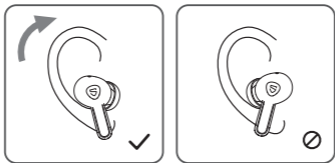
Reset

1. Clear the pairing record between the earbuds and **all** your devices.
2. Place back both earbuds in charging case, make sure the **led** indicator of the charging case flashes twice.
3. With the case lid open, press and hold the charging case button for 10 seconds until the red light flashes thrice, reset complete.
4. Close the case lid and reopen it to activate the earbuds.

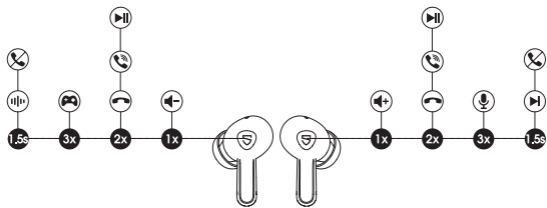


Wearing

1. Identify the **left** and **right** earbuds.
2. Rotate earbuds to find the most comfortable angle.



Product Diagram



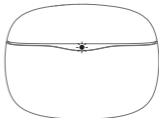
Touch Control

Power On	Open up the case lid
Power Off	Place back into charging case and close the lid
Play / Pause	Double tap the MFB
Volume -	Single tap the left MFB
Volume +	Single tap the right MFB
Next Track	Press and hold the right MFB for 1.5s
Answer / Hang Up Phone Call	Double tap the MFB
Reject Phone Call	Press and hold the MFB for 1.5s
Manually Enter Pairing Mode	Press and hold the charging case button for 3s
Activate Voice Assistant	Triple tap the right MFB
Enter / Exit Game Mode	Triple tap the left MFB
Switch Between Active Noise Canceling Mode/ Transparency Mode/ Standard mode	Press and hold the left MFB for 1.5s

Q1: What does the indicator on the charging case tell?

1. It shows the battery power left in the charging case.

Charging Case Indicator	Battery Left
Green	100%—50%
Yellow	49%-10%
Red	Below 10%



Note: When the charging case indicator shows red, the earbuds will enter shutdown state and no longer be charged after they place back and close the case lid.

2. While charging the case, the indicator flashes slowly.

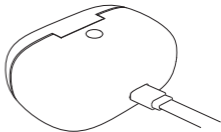
Charging Case Indicator	Battery Level
Red	0 - 20%
Yellow	21% - 69%
Green	70% - 99%
Green LED stays on	100%

3. In-stock Detection:

Open the case lid, place back both earbuds into the charging case, the indicator will flash twice and stay on for 10 seconds (the status of the indicator is displayed according to the current battery level)

Q2: How to charge the charging case?

1. Use a Type-C adapter to charge the case (current no more than 1A).
2. Please charge the earbuds and charging case at least once per 3 months when not in use for a long time.

**Q3: Why are the earbuds still connected to my phone after placing them back and closing the case lid?**

1. The charging case has no power left. The case can't turn off the earbuds if it is out of battery.
2. Make sure the earbuds are placed in the charging case correctly, and the contactors on the charging case and earbuds are clean. Please try to clean them with something like microfiber cloth.