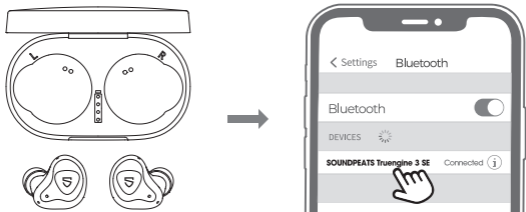


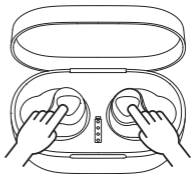
Pairing



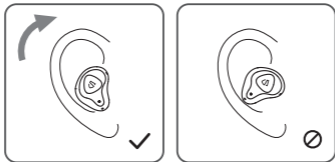
1. The earbuds automatically pair to each other after being taken out from the charging case. LED on main earbud flashes in white and red, and LED on the secondary earbud stays in white.
2. Activate **Bluetooth** on the device, and choose "SOUNDPEATS Truengine 3 SE" on **Bluetooth** list to pair.

Reset

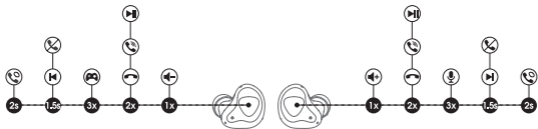
1. Clear pairing record between the earbuds and your devices.
2. Place back both earbuds into the charging case and make sure they are in charging status.
3. Long press both multifunction buttons for 10s until LEDs indicators of earbuds flash in white twice, reset completed.



Wearing



Product Diagram



Button Control

Power On	Automatically: Take out the earbuds from charging case Manually: Long press the multifunction button for 1.5s
Power Off	Automatically: Place the earbuds back into the charging docks and close the charging case Manually: Long press the multifunction button for 10s
Play/ Pause	Double click the multifunction button
Volume -	Click the left multifunction button once
Volume +	Click the right multifunction button once
Previous Track	Long press the left multifunction button for 1.5s
Next Track	Long press the right multifunction button for 1.5s
Answer / Hang Up Phone Call	Double click the multifunction button
Reject Phone Call	Long press the multifunction button for 1.5s
Switch Between Two Active Calls	Long press the multifunction button for 2s
Enter Pairing Mode Manually	Long press the multifunction button for 6s
Activate Voice Assistant	Triple click the multifunction button on right earbud
Game Mode	Triple click the multifunction button on left earbud

Game Mode

SOUNDPEATS Truengine 3 SE uses the latest technology and is equipped with game mode. In the game mode, earbuds delay will be greatly reduced to ensure the synchronization of the game audio and picture.

Triple click the multifunction button on left earbud to turn on/off the game mode. The earbud prompts "Game Mode" when the mode is on, and prompts "Exit Game Mode" when it's off.

Q&A

Q1: What do the charging LEDs tell while charging the case?

The LEDs indicators of charging case stay on while charging, and turn off after fully charged.



When the battery level of the charging case is 0-24%,
The first LED at the bottom flashes in white



When the battery level of the charging case is 25%-49%,
The first LED at the bottom lights up in white And the second LED flashes in white



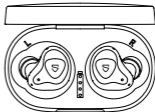
When the battery level of the charging case is 50%-74%,
The first 2 LEDs at the bottom light up in white And the third LED flashes in white



When the battery level of the charging case is 100%,
All four LEDs at the bottom light up in white



When the battery level of the charging case is 75%-99%,
The first 3 LEDs at the bottom light up in white And the forth LED flashes in white



Q2: Why are the earbuds still connected to my phone after placing back?

1. The charging case is out of battery. The case will not turn off the earbuds if the case battery dead.
2. Please make sure the earbuds are placed properly in the charging case. And wipe the charging metal sheet and pin needle with a microfiber cloth to keep charging connectors on both the earbuds and charging case clean.

Q3: Why the playtime does not match as advertised?

A single charge of the earbuds will not give you 40 hours playtime constantly. The earbuds work around 10 hours per charge with average use. The charging case provides another 3 recharges.

FCC Statement

This equipment has been tested and found to comply with the limits for a Class B digital device, pursuant to Part 15 of the FCC rules. These limits are designed to provide reasonable protection against harmful interference in a residential installation. This equipment generates uses and can radiate radio frequency energy and, if not installed and used in accordance with the instructions, may cause harmful interference to radio communications. However, there is no guarantee that interference will not occur in a particular installation. If this equipment does cause harmful interference to radio or television reception, which can be determined by turning the equipment off and on, the user is encouraged to try to correct the interference by one or more of the following measures:

- Reorient or relocate the receiving antenna.
- Increase the separation between the equipment and receiver.
- Connect the equipment into an outlet on a circuit different from that to which the receiver is connected.
- Consult the dealer or an experienced radio/TV technician for help.

This device complies with part 15 of the FCC rules. Operation is subject to the following two conditions:

- (1) This device may not cause harmful interference.
- (2) this device must accept any interference received, including interference that may cause undesired operation.

Changes or modifications not expressly approved by the party responsible for compliance could void the user's authority to operate the equipment.