

Alienware
Tri-Mode Wireless Gaming Headset
AW920H
User's Guide

Regulatory Model: AW920H/ UD2202u

A L I E N W A R E™ 

Notes, Cautions and Warnings

 **NOTE:** A NOTE indicates important information that helps you make better use of your computer.

 **CAUTION:** A CAUTION indicates potential damage to hardware or loss of data if instructions are not followed.

 **WARNING:** A WARNING indicates a potential for property damage, personal injury, or death.

Copyright © 2022 Dell Inc. or its subsidiaries. All rights reserved. Dell, EMC, and other trademarks are trademarks of Dell Inc. or its subsidiaries. Other trademarks may be trademarks of their respective owners.

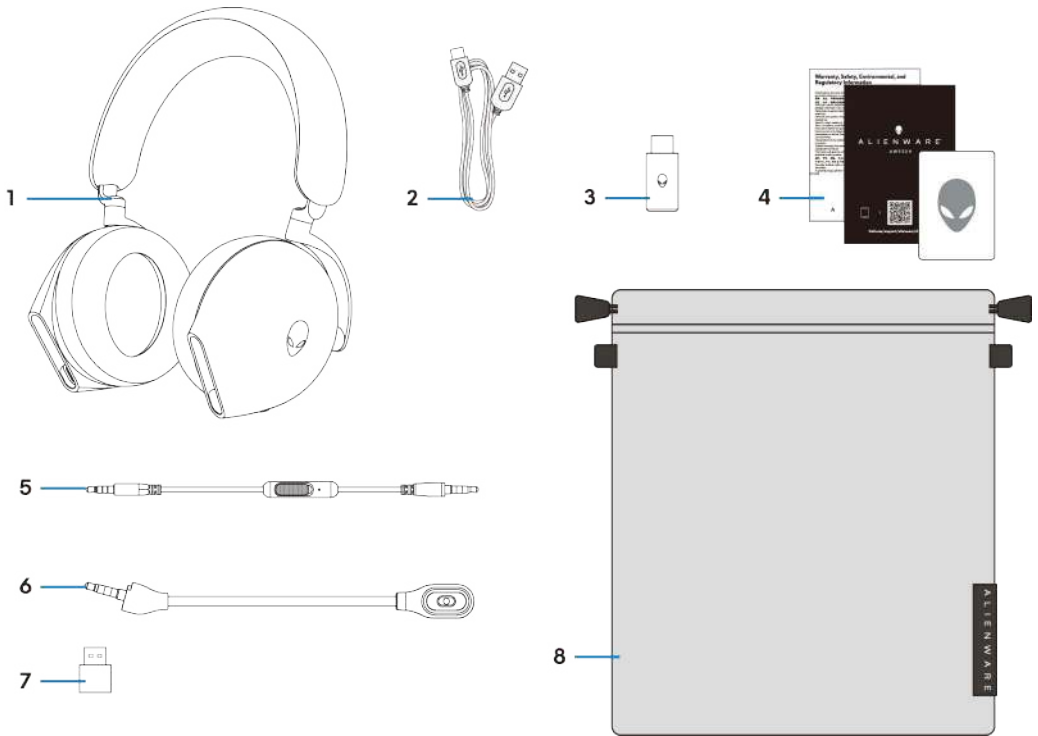
2022 – 01
Rev. A00

Contents

What's in the box	5
Features	6
Headset.....	6
Accessories	7
Charging the headset	8
Battery life.....	9
Turning on/off your headset.....	10
Auto power off	10
Connecting the headset to your device	11
System requirements	11
Inserting the boom microphone	11
Connecting the headset to your device using the USB wireless dongle	12
Connecting the headset to your device using Bluetooth	13
Connecting the headset to your device using the Inline audio cable	14
Configuring the headset on your computer	15
Alienware Command Center (AWCC)	17
Installing AWCC.....	17
Installing AWCC through Windows Update	18
Installing AWCC from the Dell Support website	18

Activate Dolby Atmos for Headphone	18
Updating the firmware.....	19
Updating the headset firmware manually	19
Updating USB wireless dongle firmware manually	19
Using the headset.....	20
Adjusting the headset.....	20
Using features on the headset	21
Muting/unmuting the microphone.....	22
Active Noise Cancellation (ANC) on/off	23
Replacing the ear pads	24
Regulatory label position.....	25
Troubleshooting.....	26
Specifications.	30
Warranty information.....	31
Limited warranty and return policies	31
For U.S. customers:.....	31
For European, Middle Eastern and African customers:.....	31
For non-U.S. customers:	31
Safety information	32
Regulatory information	32

What's in the box



- 1 Alienware Tri-Mode Wireless Gaming Headset AW920H
- 2 USB-A to USB-C charging cable
- 3 USB wireless dongle
- 4 Documents
- 5 3.5 mm inline audio cable
- 6 Detachable boom microphone
- 7 USB-A to USB-C adaptor
- 8 Soft carry pouch

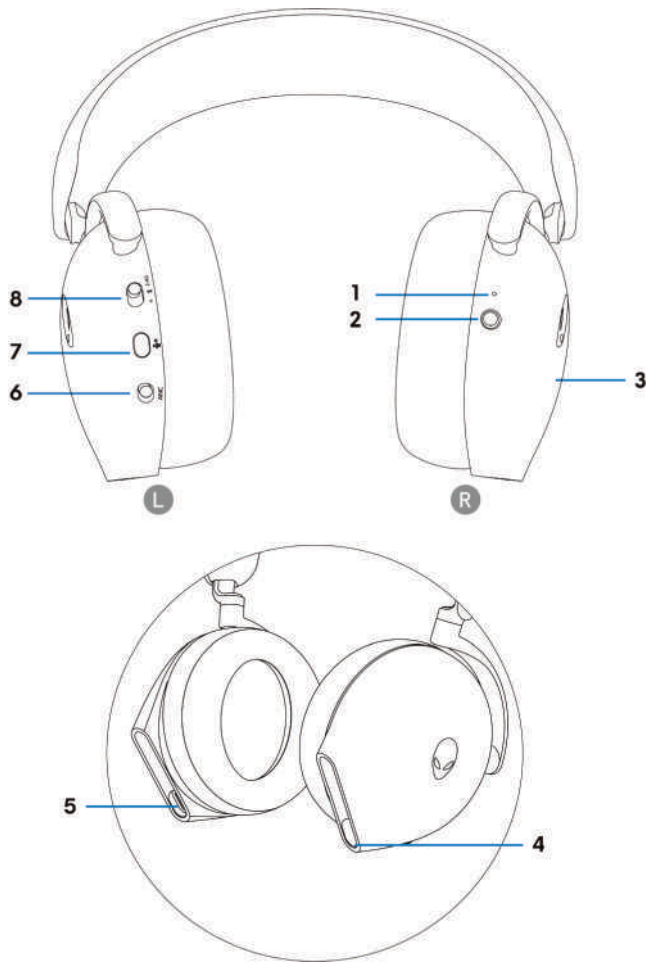
NOTE: Charge the headset to activate it before turn it on for the first time.

NOTE: The documents shipped with your headset may vary depending on the region.

NOTE: Soft carry pouch is for protecting headset and preventing dust.

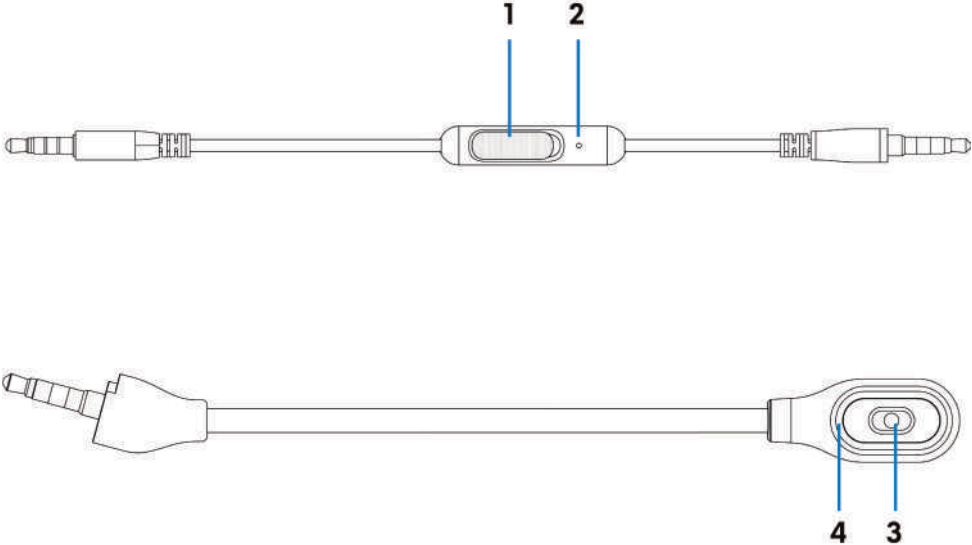
Features

Headset



- | | | | |
|---|----------------------------|---|---|
| 1 | Indicator LED | 2 | Power button |
| 3 | Headset touch control area | 4 | Inline audio cable/Boom microphone port |
| 5 | USB-C Charging port | 6 | ANC On/Off slider |
| 7 | Microphone mute button | 8 | 2.4G/BT/BT pairing switch slider |

Accessories

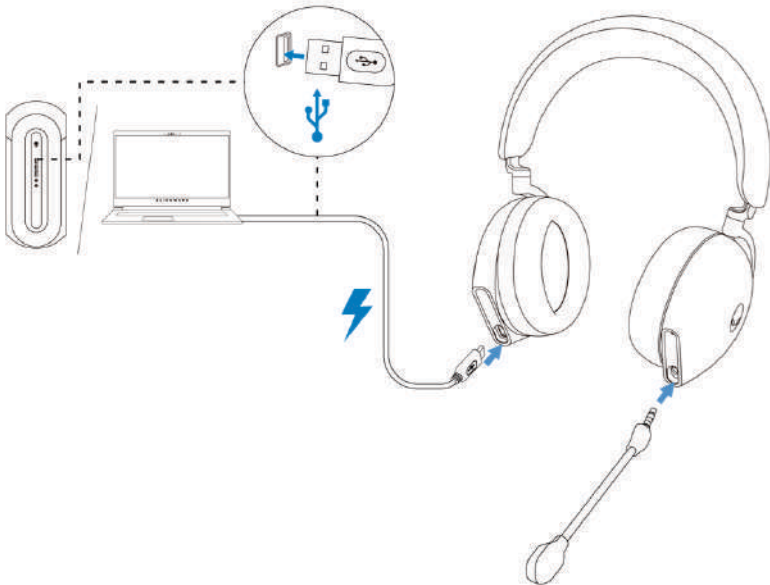


- 1 Microphone mute slider
- 3 Microphone

- 2 Microphone
- 4 Microphone mute LED

Charging the headset

To charge the headset, connect USB-C end of the USB-A to USB-C cable to the USB-C port on your headset. Connect the other end to the USB port on your computer.



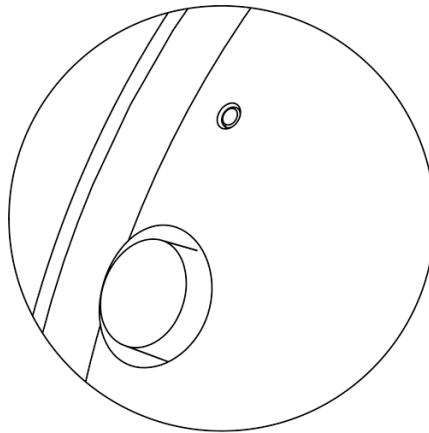
NOTE: For best results, ensure that the battery is fully charged when using it for the first time.

NOTE: To improve battery life, turn off the power switch when the headset is not used.




Battery life

The headset battery can last up to 30 hours of gaming/audio playback and 55 hours during Bluetooth mode (with the lights turned off and ANC off). The complete charging of battery may take less than 2.5 hours.

When the headset is turned off and charging, the LED light and Alienhead logo indicates the battery status.

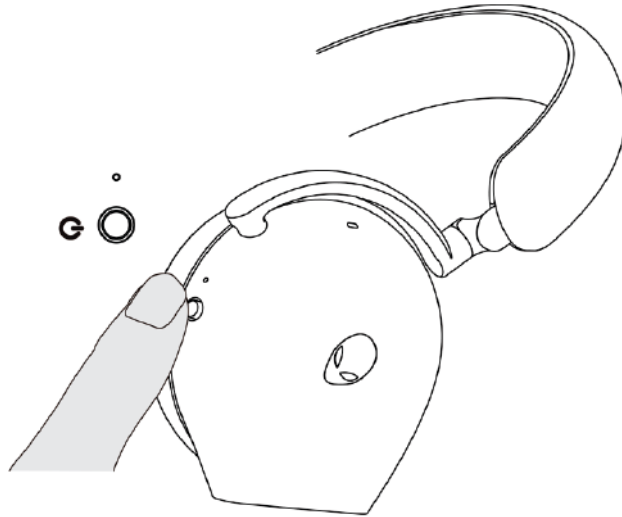


Battery status

	Fully charged Power LED and Alienhead logo lights stay green.
	While charging Power on: LED light and Alienhead logo changed between amber and green for 12 seconds, then go to previous lighting effect . Power off: Light changed between amber and green.
	When battery less than 20% Power LED: LED light slowly blinks in amber. Alienhead logo: Light fast blinks in amber for 5 seconds, then go dark for 15 seconds. This cycle repeats until battery dead.

Turning on/off your headset

Hold the power button on the right ear cup for two seconds to turn on/off the headset.



Auto power off

When USB wireless dongle connection is lost or Bluetooth is not connected (either the computer is turned off or the USB wireless dongle is removed from the USB port), the headset will automatically turn off after 30 minutes. To turn the headset on, press the Power button.

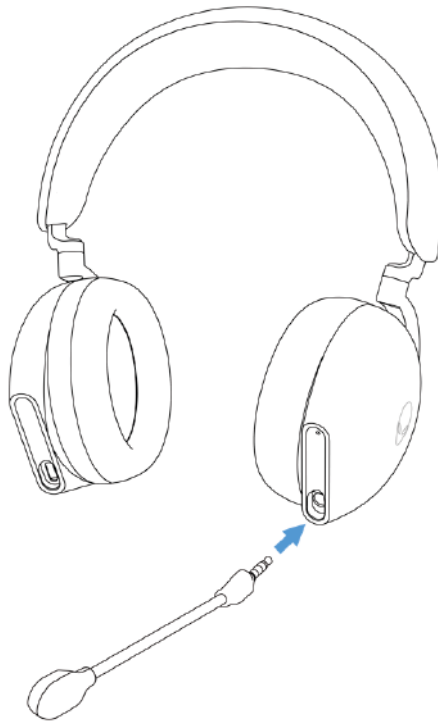
Connecting the headset to your device

System requirements

- One USB port for USB wireless dongle
- One USB port for charging (optional)
- Microsoft Windows 10 or Microsoft Windows 11 64-bit/Mobile/PS4/XboxOne

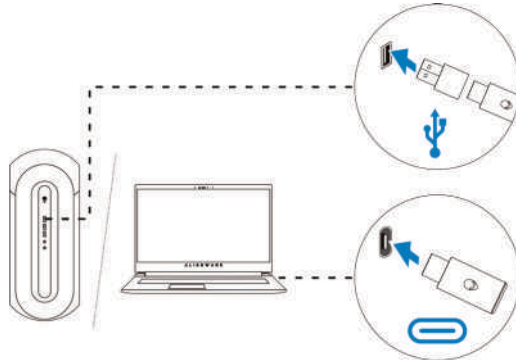
Inserting the boom microphone

Inserting the boom microphone firmly into the boom microphone port of the headset. (for connection by wireless dongle or Bluetooth)

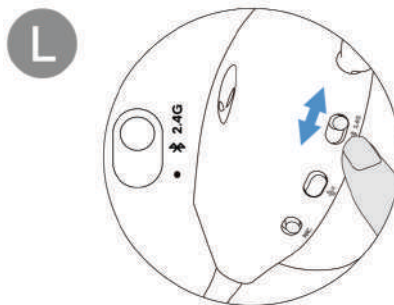


Connecting the headset to your device using the USB wireless dongle

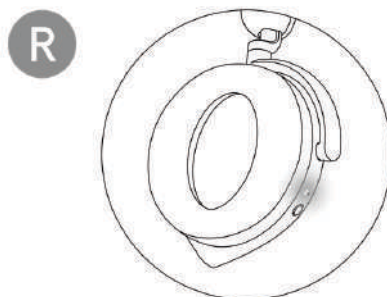
1. Plug the USB wireless dongle into the USB-A to USB-C adaptor, and then connect the adaptor to the USB port on your computer.



2. Slide the pairing switch slider on the headset to 2.4GHz mode. The headset and the USB wireless dongle are pre-paired.

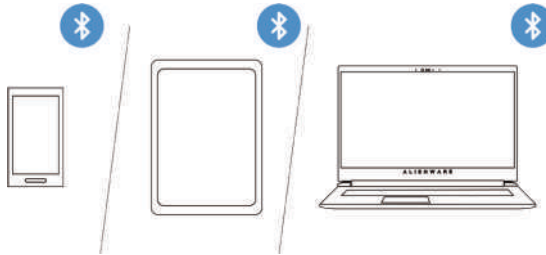


3. The LED lights up white when connected.



Connecting the headset to your device using Bluetooth

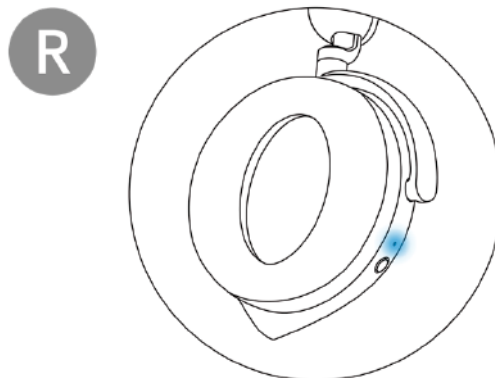
1. Turn on the Bluetooth in your computer before connecting the headset using Bluetooth.



2. Slide the pairing switch slider to the bottom for two seconds. You will see that the blue light blinks, which indicates pairing mode is on.

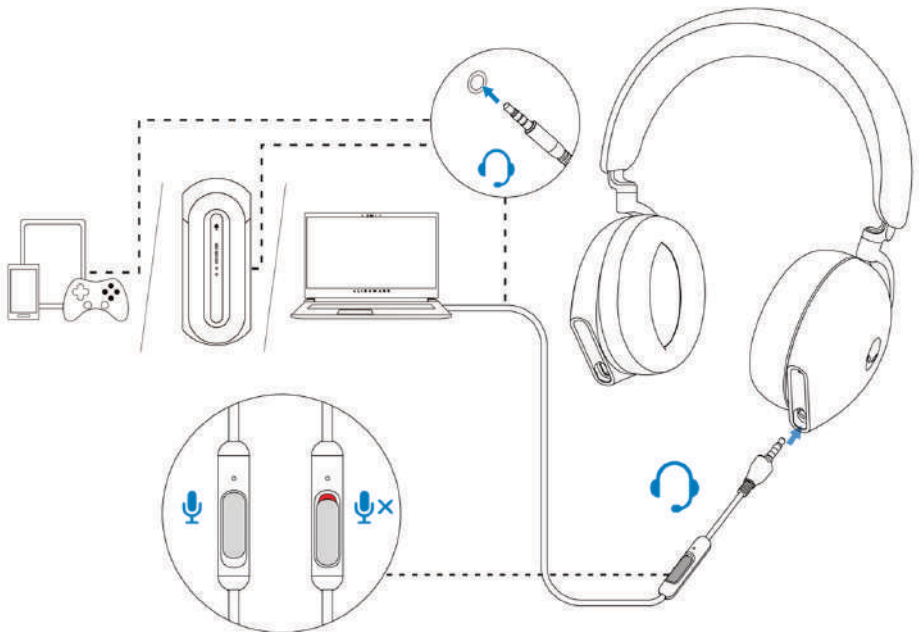


3. Connect the headset to computer, laptop, smartphone or tablet and so on. The LED lights up blue when connected.



Connecting the headset to your device using the Inline audio cable

1. Connect one end of the 3.5 mm inline audio cable to the boom microphone port on your headset, and connect the other end to the audio/headset port on your computer or mobile device.
2. The headset speakers and the microphone on the cable continue to work even when the headset is turned off, as long as the headset is connected to a 3.5 mm inline audio cable. The buttons and LEDs stop functioning if the headset is turned off.
3. While using the 3.5 mm inline audio cable, the audio source will be provided only by the Inline cable. The 2.4G mode and the Bluetooth mode still continue to work even after removing the audio cable.
4. When using the 3.5 mm inline audio cable, the headset will be compatible with any device with audio jack port like mobile, XboxOne, and PS4.

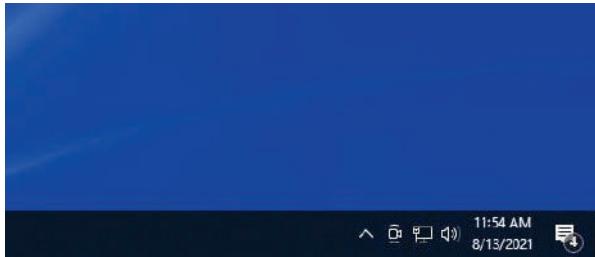


NOTE: Audio from 3.5 mm inline audio cable will be muted when USB-C cable is connected to a power source for charging.

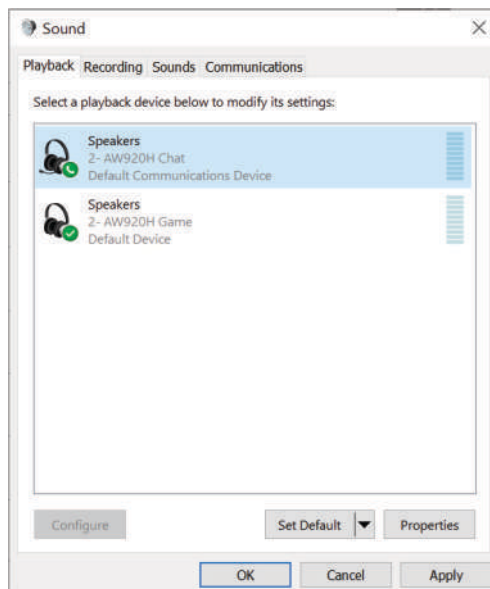
Configuring the headset on your computer

To use your headset for gaming or to listen to music from your computer, it has to be selected as the default playback device and the default recording device in Windows Audio Settings.

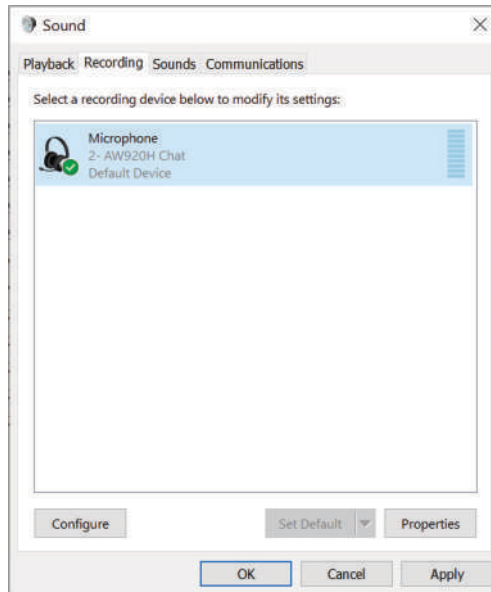
1. On the taskbar, right-click the speaker icon and click **Sounds**. The **Sounds** dialog box appears.



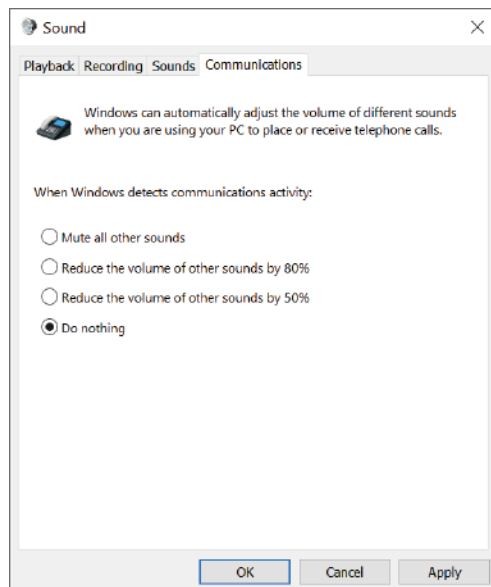
2. Click the **Playback** tab and set the following:
 - Set **AW920H Game** as the default playback device.
 - Set **AW920H Chat** as the default communication device.



3. Click the **Recording** tab, set the Alienware **AW920H Chat** as the default device.



4. Click the **Communications** tab, select **Do nothing**. Click **OK**.



Alienware Command Center (AWCC)

Alienware Command Center (AWCC) provides a single interface to transform your Windows computer into an enhanced gaming environment. This application enables you to perform the following functions:

 **NOTE: You will experience limited functionality in AWCC when your device is connected by Bluetooth.**

1. In the **FX** menu, you can access the following features:
 - View device connection type when it is connected through Bluetooth.
 - View battery level and charging status.
 - Change lighting color and animation in the **Lighting** tab.
2. In the **Settings** tab, you can access the following settings:
 - View firmware version and upgrade the device firmware to the latest version under the **Update** tile.
 - Reset the device settings to factory default.

 **NOTE: For more information, please see the AWCC application Online Help.**

Installing AWCC

To use the AWCC features, uninstall Alienware Headset Center (AWHC) if you have already installed AWHC on your computer. You need to install AWCC to configure the features available in Alienware Tri-Mode Wireless Gaming Headset AW920H.

Before installing AWCC on your computer, ensure that your computer is connected to internet. If your computer is preinstalled with AWCC 5.0 or later, you can configure your Alienware gaming headset through FX available in AWCC. If your computer is not preinstalled with AWCC 5.0 or later, install AWCC through Windows Update or from the Dell Support website at <https://www.dell.com/support>. AWCC requires Windows 10 version 16299 or later and Windows 11.

Installing AWCC through Windows Update

1. Connect your Alienware USB wireless dongle to your computer through USB port. The AWCC application is downloaded and installed automatically.
2. AWCC installation may take up to 10 minutes to complete.
3. Go to the program folder to ensure that the AWCC installation is complete. Then launch AWCC. Perform the following steps to download additional software:
 - In the **Settings** window, click **Windows Update**.
 - Click **Check for updates** to check the Alienware driver update progress. If the driver update is not responding on your computer, install AWCC from the Dell support website.

Installing AWCC from the Dell Support website

1. Download the latest version of the following applications at <https://www.dell.com/support/drivers>
 - Alienware Command Center
 - Alienware Gaming Headset driver
2. Go to the folder where you saved the setup files.
3. Double-click the setup file and follow the on-screen instructions to install the application.

 **NOTE: You can customize the headset features and lighting effects by using the AWCC application.**

Activate Dolby Atmos for Headphone

The headset automatically activates Dolby Atmos when connected to Microsoft Windows 10 or Microsoft Windows 11 computer by following the steps below:

1. Go to Microsoft Store.
2. Download the free Dolby Access app.
3. Connect the headset to the computer.
4. Once connected, Dolby Access will detect your device and activate Dolby Atmos for Headphones.

Updating the firmware

For best performance, update your headset and USB wireless dongle firmware to the latest version.

Updating the headset firmware manually

1. Go to <http://www.dell.com/support> and search for AW920H.
2. From the **Drivers & Downloads** tab, download **AW920H Headset FW update tool**.
3. Connect your headset to your computer through the USB cable.
4. Open the downloaded **AW920H Headset FW update tool** file.
5. Click on the **Update** button. Once the firmware update is complete, the "**Update Complete! OK**" message is displayed.
6. Close the window.

 **NOTE: Disconnecting the USB cable from the computer, closing the AWCC software, or shut down of computer during firmware update may damage the headset.**

Updating USB wireless dongle firmware manually

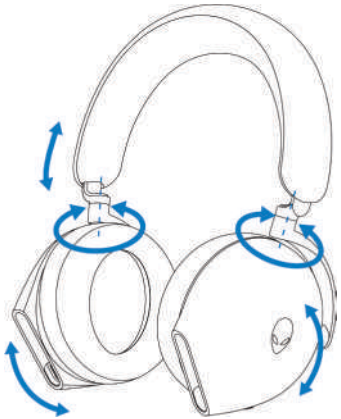
1. Go to <http://www.dell.com/support> and search for AW920H.
2. From the **Drivers & Downloads** tab, download **AW920H Dongle FW update tool**.
3. Connect your dongle to your computer through.
4. Open the downloaded **AW920H Dongle FW update tool** file.
5. Click on the **Update Dongle** button. Once the firmware update is complete, the "**Update Complete! OK**" message is displayed. Close the window.

 **NOTE: Disconnecting the USB wireless dongle, closing the AWCC software, or shut down of computer during firmware update may damage the USB wireless dongle.**

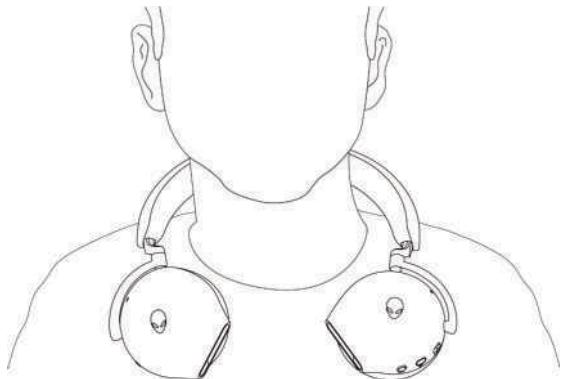
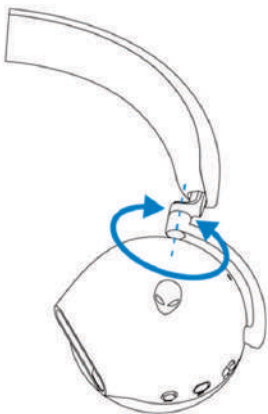
Using the headset

Adjusting the headset

Adjust the headband and ear pads to find the optimal fit for your head. When using boom microphone, position it approximately two centimeters away from your mouth.



The ear cups can be rotated to wear the headset around the neck comfortably, or for easier storage.



Using features on the headset

Touch control features

Use your finger to touch the effective touch area on right ear cup to control the volume, music play, call answer, call reject, and so on:

Swipe up or down

- Swipe up or down for unit volume increment or decrement.
 1. Using Bluetooth
 - When volume level is at 0 to 10%, unit volume is 5%.
 - When volume level is at 10 to 90%, unit volume is 8%.
 - When volume level is at 90 to 100%, unit volume is 5%.
 2. Using the USB wireless dongle
 - Unit volume is 6%.

Swipe up or down, and hold

- Swipe up and hold for continuous increment.
- Swipe down and hold for continuous decrement.

Swipe forward or back

- Swipe forward to the next track.
- Swipe backward to the previous track.

Double tap

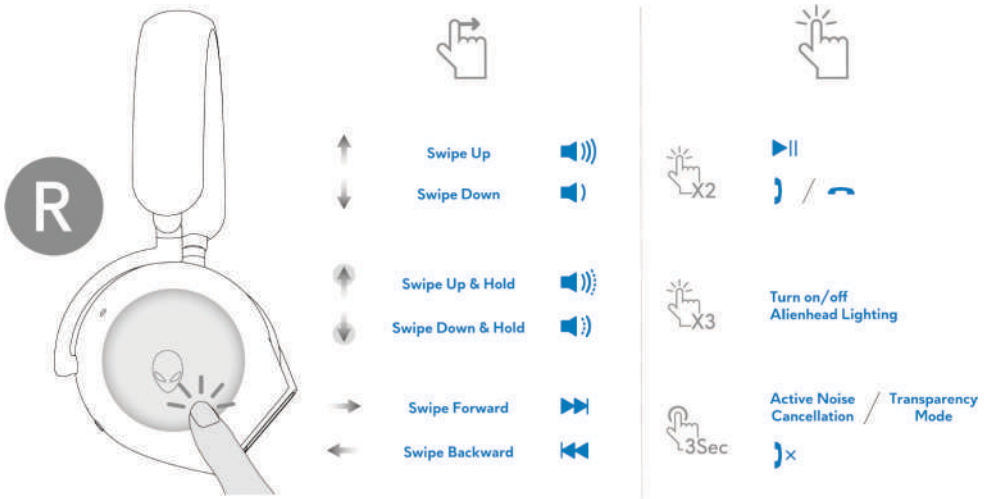
- Play and/or Pause.
- Answer and/or hang up call.

Triple tap

- Turn on/ off the Alienhead lighting.

Tap and hold for three seconds

- Toggle between Active-Noise Cancellation (ANC) and Transparency mode.
(no response if ANC off)
- Reject the incoming call.

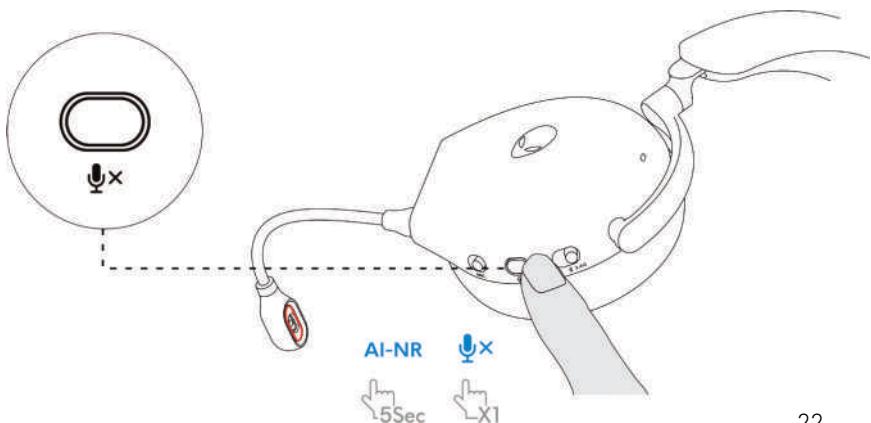


NOTE: Please tap and swipe with one finger only.

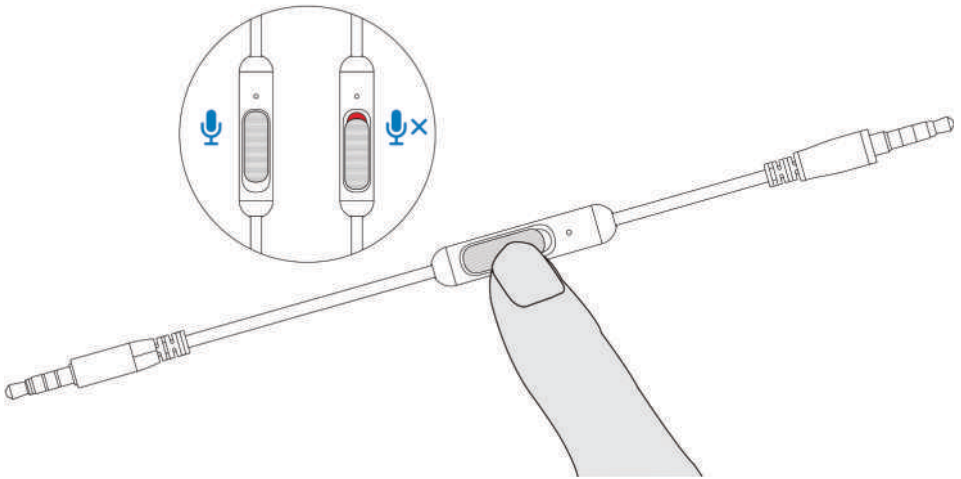
Muting/unmuting the microphone

Press the mute button on the left ear cup to mute or unmute the microphone. The microphone mute indicative light on boom microphone turns red when the microphone is muted.

Press the mute button and hold for five seconds to enable or disable the AI-NR (Noise Reduction function is automatically on when turn on the headset) which can identify user's voice and remove the surrounding noise during call.

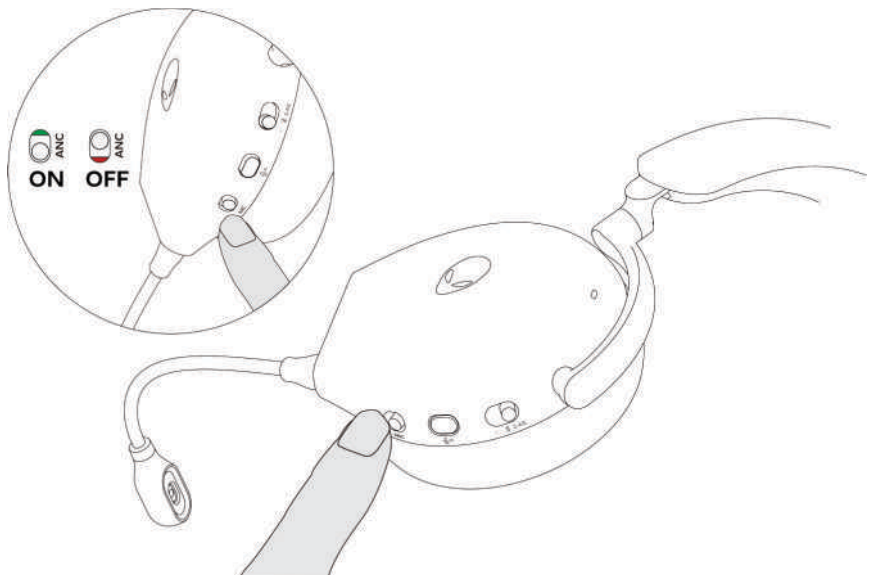


Alternatively, use the mute slider on the 3.5 mm inline audio cable to mute or unmute the microphone when the inline audio cable is connected.



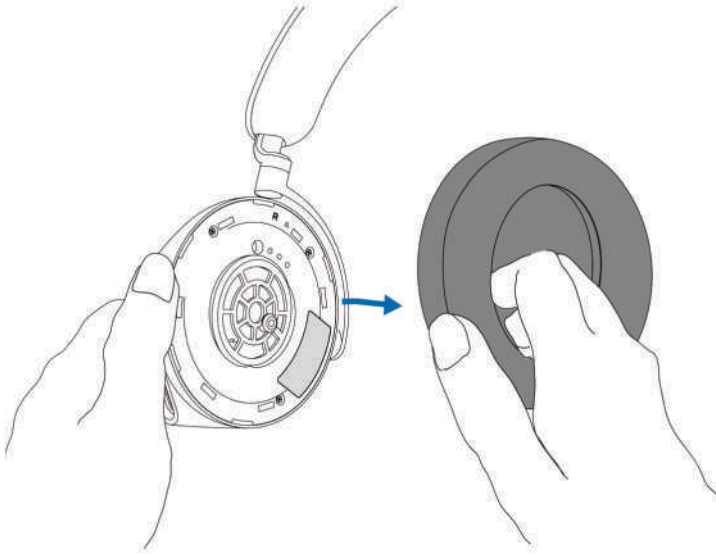
Active Noise Cancellation (ANC) on/off

Use the ANC slider on the left ear cup to turn on/off the ANC.

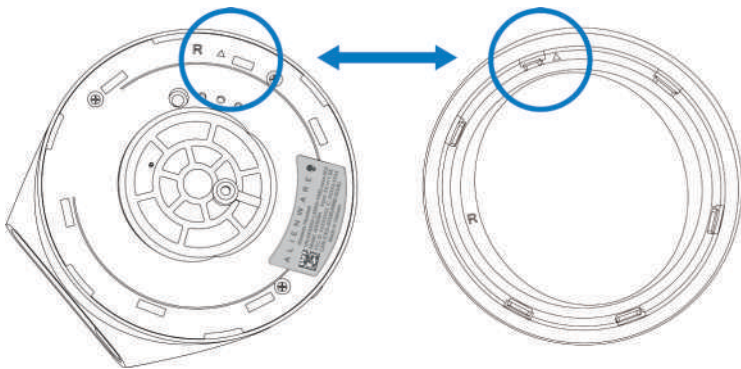


Replacing the ear pads

To remove the ear pad, hold the ear pad firmly and then pull the ear pad away from the headset.



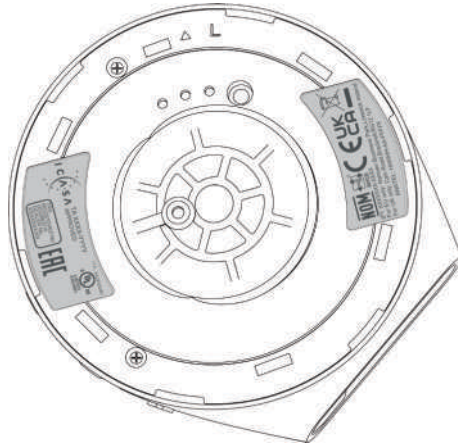
Note that left and right ear pads are different. Fit the triangular marks on the ear pad and the ear cup. Push the hooks of the ear pad directly into the holes of ear cup firmly.



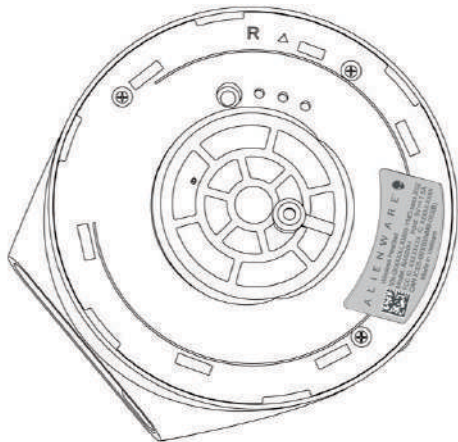
Regulatory label position

There are three regulatory labels attached to the headset. One is on the right ear cup and two are on the left ear cup. Remove the cushion to find their positions.

Left earcup



Right earcup



Troubleshooting

Problems	Possible solutions
Headset has no sound	<ul style="list-style-type: none"><li data-bbox="441 256 1072 354">• Ensure that the headset is turned on, and properly connected through the wireless dongle, Bluetooth, or Inline audio cable.<li data-bbox="441 402 1072 467">• Ensure that you're not using the headset with Inline audio connection while charging.<li data-bbox="441 508 1072 597">• Ensure that the audio player is playing music, and that the computer volume and media player volume are on and not muted.<li data-bbox="441 646 1072 711">• Click the volume icon on your computer. Adjust the volume level on the volume bar.<li data-bbox="441 751 1072 841">• Check the playback setting on the computer, and ensure that the default device is set to DEVICE NAME.<li data-bbox="441 889 1072 987">• Check the headset is within range (10 m) of the wireless dongle or connected mobile devices. (if connected through the wireless dongle or Bluetooth)<li data-bbox="441 1036 873 1060">• Check wireless connection is good.<li data-bbox="441 1109 1072 1206">• Check that the headset is connected to wireless dongle (recommended mode) on your computer during game.
The person on the other end cannot hear me	<ul style="list-style-type: none"><li data-bbox="441 1247 1072 1304">• Ensure that the microphone is positioned close to the mouth.<li data-bbox="441 1352 1072 1412">• Ensure that the microphone is not muted. The mute light on boom microphone should be off.

Problems

Possible solutions

- Check the record setting on the computer, and ensure that the default device is set to DEVICE NAME.
- Check that the boom microphone is fully inserted into the microphone port. (if connected through the wireless dongle or Bluetooth)
- Ensure that the headset is within range (10 m) of the wireless dongle or connected mobile devices (if connected through the wireless dongle or Bluetooth).
- Ensure that the audio plug end is well inserted into the boom microphone port on your headset and computer respectively (if connected through the inline audio cable).
- Ensure that the mute slider on the inline audio cable is not muted.

Abnormal sound is coming out of the headset

- Check if something is obstructing the headset.
- Adjust the volume level up and down, and check if the abnormal sound changes.
- Ensure that the headset is within range (10 m) of the wireless dongle or connected mobile devices. (if connected through the wireless dongle or Bluetooth)
- Ensure that the inline audio plug is fully inserted into the audio port of the computer or mobile devices. (if connected through the audio cable)

Problems	Possible solutions
Unbalanced sound in the headset	<ul style="list-style-type: none">• Check the computer volume balance is set correctly.<ul style="list-style-type: none">- Right-click the headset icon.- Select playback devices.- Right-click default playback devices, and select Properties.- Select Levels, and click Balance. Ensure that the L and R values are the same.
Headset lights do not light up	<ul style="list-style-type: none">• Ensure that the headset is turned on.• Open Alienware Command Center, and ensure that the lights are turned on.
Wireless range is too short	<ul style="list-style-type: none">• Ensure that the wireless dongle or connected mobile devices with Bluetooth is not covered or blocked by metal or electronic objects.• Try connecting the wireless dongle to the USB port on the side of your computer, rather than the USB port at the back of your computer.• Ensure that no other USB device is connected adjacent to the wireless dongle.
Microphone picks up too much background noise	<ul style="list-style-type: none">• Ensure that the microphone is positioned close to the mouth.• Open Alienware Command Center, and reduce the microphone volume.

Problem**Possible solution**

Microphone mute is not working when connected with inline audio cable

- Ensure that the audio plug end is well inserted into the boom microphone port on your headset and computer respectively.
- Ensure that the microphone mute button on the inline audio cable is set to MUTE OFF.
- Ensure that the audio plug end with 5 poles is inserted to the headset port, and the end with 4 poles is inserted to your computer or mobile.
- Ensure that the microphone mute button on the inline audio cable is set to MUTE OFF.

Alienware command center does not recognize the headset

- Ensure that the headset is turned on and the headset is connected to the computer through the USB wire, wireless dongle or Bluetooth pairing.
- Reconnect the wireless dongle, pair the headset using the Bluetooth, or restart Alienware Command Center.

Specifications

Specifications	Value
Headset weight	300 g
Headset dimensions	Length: 174.15 mm (6.86 inches) Width: 101.04 mm (3.98 inches) Height: 209.73 mm (8.26 inches)
Microphones	Noise Reduction microphone
Speaker	40 mm Dynamic PureSound speaker (Hi-Fi)
Speaker maximum input power	50 mW
Speaker frequency range	20Hz – 40kHz
Operating temperature	5°C to 40°C (41°F to 104°F)
Storage temperature	-5°C to 45°C (23°F to 113°F)
Operating humidity	5% to 90% relative humidity

Warranty information

Limited warranty and return policies

The Alienware Tri-mode Wireless Gaming Headset AW920H carries a 2-years limited hardware warranty. If purchased together with a Dell computer, it will follow the system warranty.

For U.S. customers:

This purchase and your use of this product are subject to Dell's end user agreement, which you can find at <https://www.dell.com/terms>. This document contains a binding arbitration clause.

For European, Middle Eastern and African customers:

Dell-branded products that are sold and used are subject to applicable national consumer legal rights, the terms of any retailer sale agreement that you have entered into (which will apply between you and the retailer) and Dell's end user contract terms.

Dell may also provide an additional hardware warranty – full details of the Dell end user contract and warranty terms can be found by going to


<https://www.dell.com>, select your country from the list at the bottom of the "home" page, and then click the "terms and conditions" link for the end user terms or the "support" link for the warranty terms.

For non-U.S. customers:

Dell-branded products that are sold and used are subject to applicable national consumer legal rights, the terms of any retailer sale agreement that you have entered into (which will apply between you and the retailer) and Dell's warranty terms. Dell may also provide an additional hardware warranty – full details of Dell's warranty terms can be found by going to: <https://www.dell.com/terms>, select your country from the list at the bottom of the "home" page, and then click the "terms and conditions" link or the "support" link for the warranty terms.

 **NOTE: Warranty for soft carry pouch is not covered.**

Safety information

 Keep the volume at optimal levels while in use. Do not listen at high volume levels for a long period. Prolonged exposure to a high volume may cause a high sound pressure and may cause a risk of hearing damage.

Regulatory information

- IFT RCPALAW22-1457 (AW920H)
- IFT RCPALUD22-0157 (UD2202u)