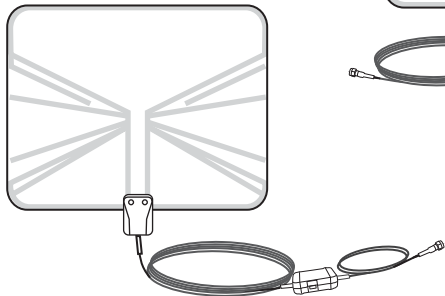
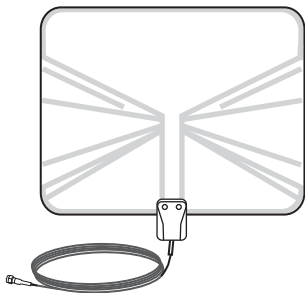
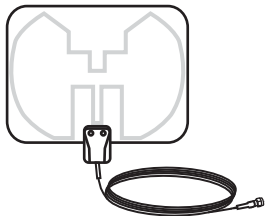


amazon
basics



B00DIFIM36
B00DIFI08E
B00DIFIP06



Instruction Manual

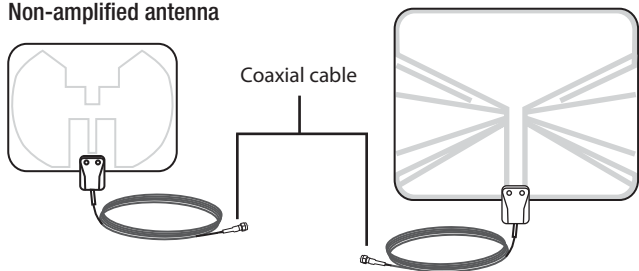
HDTV Indoor Antenna

Contents

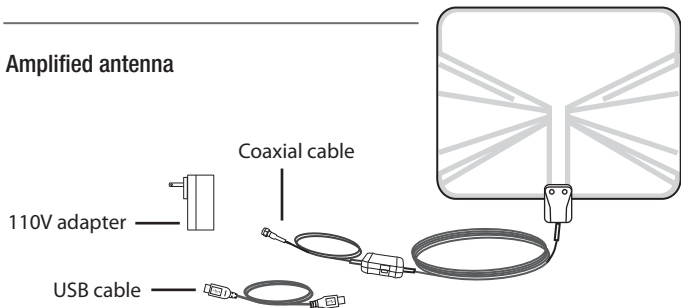
- HDTV Indoor Antenna
- Mini 59 coaxial cable (attached to antenna)
- 3' USB power cable with 110V adapter (amplified antenna only)
- Two 3M™ Command™ Brand Strips
- This instruction manual

Product overview

Non-amplified antenna

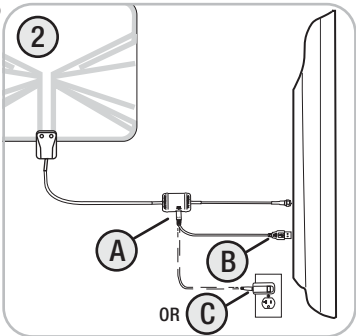
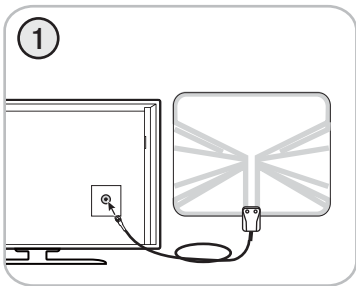


Amplified antenna



Setup:

1. Connect the coaxial cable to the **Antenna In** jack on your HDTV.
2. If you have the AmazonBasics Amplified Antenna:
 - A. Insert the micro USB connector into the USB **PWR** port on the amplifier.
 - B. Insert the other end into a USB port on your HDTV.**OR**
 - C. If the HDTV does not have a USB port, use the 110V adapter.
3. Attach the provided 3M™ Command™ Brand Strips to any part of the antenna, remove the paper backing, and then attach



the antenna to your selected surface. See *For optimal reception* below for tips on mounting your antenna.

4. Scan for channels. This is usually found in your HDTV on-screen menu. See your HDTV documentation for more information. To keep your channel list up-to-date, run a channel scan monthly. For a listing of channels available in your area, go to dtv.gov/maps.

For optimal reception

- Position the antenna as high as possible and towards the broadcast tower. The higher the antenna, the better the signal.
- Test the antenna in multiple locations because digital signals may bounce off objects.
- If the antenna lies flat (e.g. on a table), make sure the coaxial cable points towards the broadcast tower.
- If the antenna is mounted vertically (e.g. on a wall or window), run the coaxial cable from the top or bottom of the antenna (not the sides).

- Do not paint the antenna. Metallic paint can block signals.

FAQ

When do I need to run a channel scan

Run a channel scan after setting up the antenna, then monthly to keep your channels up-to-date.

How do I know where the signal is strongest?

Try the antenna in different locations, making sure to run a channel scan every time you move the antenna. Sometimes moving a few feet can make a difference. The fewer obstructions between the antenna and the tower and the higher the antenna is mounted, the better the chance of receiving a strong signal.

Some HDTVs have a signal strength indicator that shows you how strong your signal is. See the instructions that came with your HDTV to see if yours has that feature.

Is there anywhere that the antenna shouldn't be mounted?

The antenna is designed for indoor use only. The antenna is not meant to be mounted outdoors or in the attic.

Does the antenna work with any HDTV?

The antenna works with any HDTV or device that has an ATSC tuner. Devices that have built-in ATSC tuners include HDTVs, laptops, PCs, some satellite receivers, and digital recording devices (DVRs). Any television manufactured after March 1, 2007 is required by U.S. government to have an ATSC tuner. If your HDTV menu has an option for scanning for digital channels, your television has an ATSC tuner.

Can I connect the antenna to multiple televisions?

The signal should only be split between multiple HDTVs if using an amplified antenna.

What channels can the antenna receive?

The antenna can receive programming from all of the major local broadcast networks (e.g. ABC, CBS, FOX, NBC, PBS) plus additional networks (Qubo, ION, The CW, This TV, MyNetworkTV, Azteca, Telefutera, Univision, and Telemundo). The antenna can also receive local news, weather, and educational programs that satellite and cable don't offer.

How many channels will I receive with the antenna?

The number of channels will vary from location to location. Generally, if you live in or near a metropolitan area, you will receive

more channels than if you live outside a metropolitan area. Keep in mind that antenna reception may vary based on terrain (including trees, buildings, hills, and mountains). The fewer obstructions, the better your chance for receiving strong digital signals.

How can I find out what channels are broadcast in my area?

Check out dtv.gov/maps. Enter your address to get a listing of likely channels available in your area.

Do I need to pay for programming?

No, local programming received through an over-the-air antenna is free!

Troubleshooting

I am not getting any channels.

Run a channel scan on your HDTV. Select *Antenna*, *Off-Air Mode*, or *Auto-scan*, depending on your HDTV. See your TV documentation for more information.

NOTE: Running a channel scan is NOT the same as pressing Channel UP/DOWN on your remote.

- Move the antenna, then re-run the channel scan. Something may be obstructing the signal.
- Use the 110V adapter instead of the USB port on your HDTV for more power.

One channel is missing.

- Move the antenna, then re-run the channel scan. Something may be obstructing the signal.
- Try turning the antenna 10 or 20 degrees in either direction to avoid reflection, then re-run the channel scan.

The picture or sound freezes while I am watching a channel, or there are boxes in the picture.

- This is often caused by a weak or intermittent signal. Try moving the antenna to a different location or aiming it directly at the broadcast tower for this channel.

Specifications

- High VHF/UHF (B00DIFIO8E and B00DIFIP06 antennas)
- Range
 - Up to 50 miles (B00DIFIP06 antenna)
 - Up to 35 miles (B00DIFIO8E antenna)
 - Up to 25 miles (B00DIFIM36 antenna)
- Multi-directional



WEEE

Regulatory Information: Disposal of Waste Electrical and Electronic Equipment (WEEE)

The Waste Electrical and Electronic Equipment (WEEE) Directive aims to minimize the impact of electrical and electronic goods on the environment, by increasing re-use and recycling and by reducing the amount of WEEE going to landfill. The symbol on this product or its packaging signifies that this product must be disposed separately from ordinary household wastes at its end of life. Be aware that this is your responsibility to dispose of electronic equipment at recycling centers in order to help conserve natural resources.

Each country should have its collection centers for electrical and electronic equipment recycling. For information about your recycling drop off area, please contact your related electrical and electronic equipment waste management authority, your local city office, or your household waste disposal service.

FCC Information

This equipment has been tested and found to comply with the limits for a Class B digital device, pursuant to Part 15 of the FCC Rules. These limits are designed to provide reasonable protection against harmful interference in a residential installation. This equipment generates, uses and can radiate radio frequency energy and, if not installed and used in accordance with the instructions, may cause harmful interference to radio communications. However, there is no guarantee that interference will not occur in a particular installation. If this equipment does cause harmful interference to radio or television reception, which can be determined by turning the equipment off and on, the user is encouraged to try to correct the interference by one or more of the following measures:

- Reorient or relocate the receiving antenna.
- Increase the separation between the equipment and receiver.
- Connect the equipment into an outlet on a circuit different from that to which the receiver is connected.
- Consult the dealer or an experienced radio/TV technician for help.

Changes or modifications not expressly approved by the party responsible for compliance may cause interference and void the user's authority to operate the equipment.

This device complies with Part 15 of the FCC Rules. Operation is subject to the following two conditions: (1) This device may not cause harmful interference, and (2) this device must accept any interference received, including interference that may cause undesired operation.



amazon
basics