

**BELL + HOWELL®**

***SONIC BREATHE***  
***ULTRASONIC PERSONAL HUMIDIFIER***



**INSTRUCTIONS MANUAL**

**BELL + HOWELL® SONIC BREATHE ITEM NO.8662**  
Distributed Under License By EMSON® NY, NY, 10001  
©Copyright 2011 EMSON® All Rights Reserved.  
BELL + HOWELL® is a registered trademark of BHH LLC.

## CONTENTS

<b>IMPORTANT SAFEGUARDS.....</b>	<b>3</b>
<b>PARTS AND FEATURES .....</b>	<b>7</b>
<b>OPERATION.....</b>	<b>9</b>
<b>CLEANING AND MAINTENANCE .....</b>	<b>11</b>
<b>SPECIFICATIONS .....</b>	<b>12</b>

## IMPORTANT SAFEGUARDS

**Before using the electrical appliance, the following basic precautions should always be followed including the following:**

1. Read all instructions.
2. Keep humidifier out of reach of children.
3. Before use check that the voltage of wall outlet corresponds to the one shown on the rating plate.
4. Do not operate any appliance with a damaged cord or plug or after the appliance malfunctions, or is dropped or damaged in any manner. Return appliance to the nearest authorized service facility for examination, repair or electrical or mechanical adjustment.
5. If the supply cord is damaged it must be replaced by the manufacturer or an authorized service agent or a qualified technician in order to avoid a hazard.
6. Do not let cord hang over edge of table or hot surface.
7. Do not immerse plug, cord or housing into water due to the risk of electric shock.
8. This appliance is not intended for use by persons (including children) with reduced physical, sensory or mental capabilities, or lack of experience and knowledge, unless they have been given supervision or instruction concerning use of the appliance by a person responsible for their safety. Children should be supervised to ensure that they do not play with the appliance.
9. Use only bottled bottle, distilled or tap water. DO NOT use sparkling water or the humidifier will not work normally. To avoid white dust, the use of distilled water is recommended.
10. To avoid fire or shock hazard, plug into the humidifier with AC Adaptor then plug the humidifier direct to a 120 VAC or 240 VAC electrical outlet.
11. Keep AC adaptor out of heavy traffic area. To avoid fire hazard, NEVER put AC adaptor under rugs, heater, fireplace, radiator or stove.
12. The humidifier should be at least 6 inches (15 cm) away from the wall for best result.
13. Never place humidifier in the area where it is accessible to children.
14. Never use humidifier in a closed room, particularly where children may be sleeping, resting or playing. A closed room might result excessive humidity.

## IMPORTANT SAFEGUARDS

15. Do not attempt to refill or clean the humidifier without first unplugging the unit from its electrical outlet. Failure to follow this warning may cause personal injury.
16. Never place anything over mist outlet/nozzle when the humidifier is running.
17. Never insert or drop any object into any openings.
18. DO NOT operate humidifier with a damaged cord or plug.
19. DO NOT use outdoors.
20. DO NOT fill hot water in the bottle.
21. Always place humidifier on a firm, flat, level surface. A waterproof mat or pad is recommended for under the humidifier. NEVER place it on rug or carpet, or on a finished floor that may be damaged by exposure to moisture or water. Bell+Howell will not accept responsibility for property damage cause by water spillage.
22. DO NOT allow mist outlet/nozzle direct face to the wall. Mist could cause damage, particularly to wallpaper. Bell+Howell will not accept responsibility for wall or wallpaper damage cause by mist output.
23. Humidifier should be unplugged when not in use.
24. NEVER tilt, move, or attempt to empty water bottle while it is running. Switch off and unplug from electrical outlet before removing the water bottle and moving the unit.
25. DO NOT use humidifier where the humidity level exceeds 50%, excessive moisture could cause damage.

**SAVE THESE INSTRUCTIONS  
FOR HOUSEHOLD USE ONLY.**

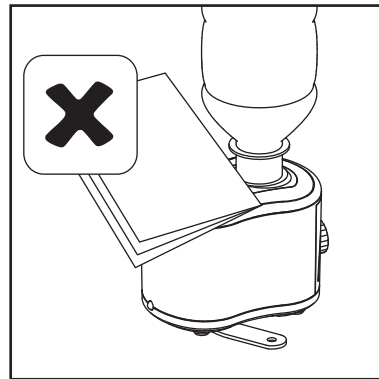
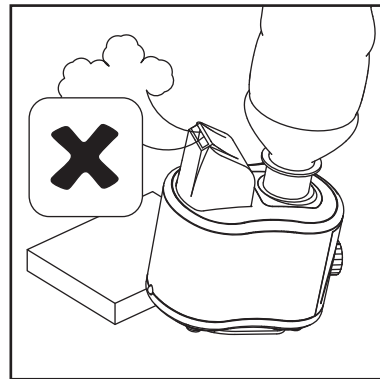
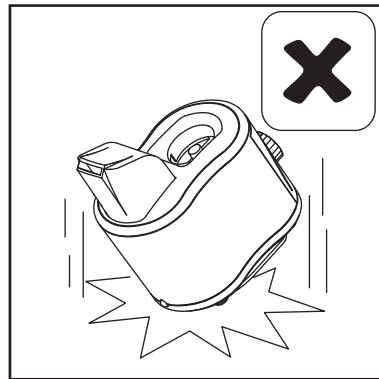
## IMPORTANT SAFEGUARDS

### IMPORTANT:

To improve the efficiency of your humidifier and reduce the possibility of health hazard, it is recommended that you take the following precautions:

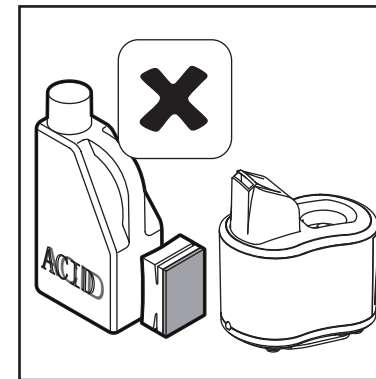
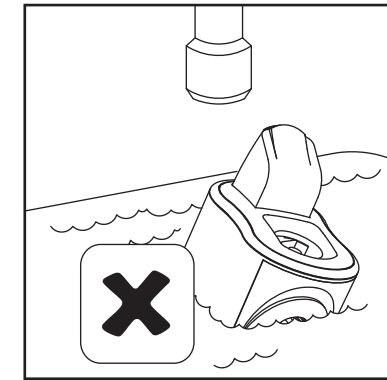
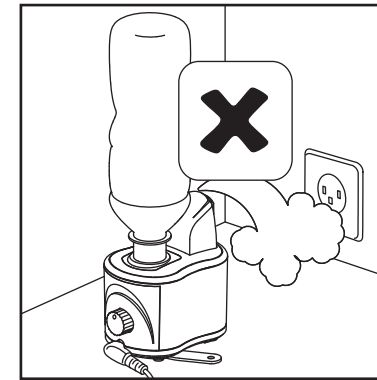
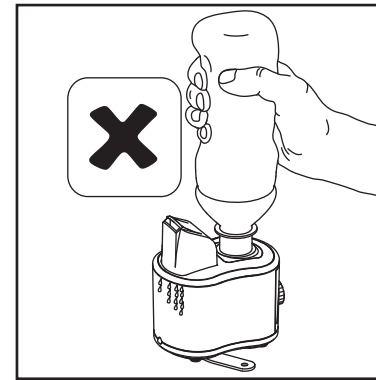
1. Follow the manufacturer's recommended cleaning and maintenance instructions.
2. The amount of minerals and impurities in the water source is varied; therefore periodical cleaning the humidifier is necessary.
3. During the heating season, check the film or scale built up on the humidifier and all moving parts every 2 weeks basis, and establish a proper cleaning schedule.
4. Do not allow film or scale build up on the humidifier or any moving parts, it will reduce the efficiency or life span of the humidifier.
5. At the end of winter humidifier season, drain and thoroughly clean your humidifier as part of the summer shut down.

Like your heating system or air conditioning unit, periodic cleaning and maintenance are required to ensure the safe and efficient operation of your humidifier.



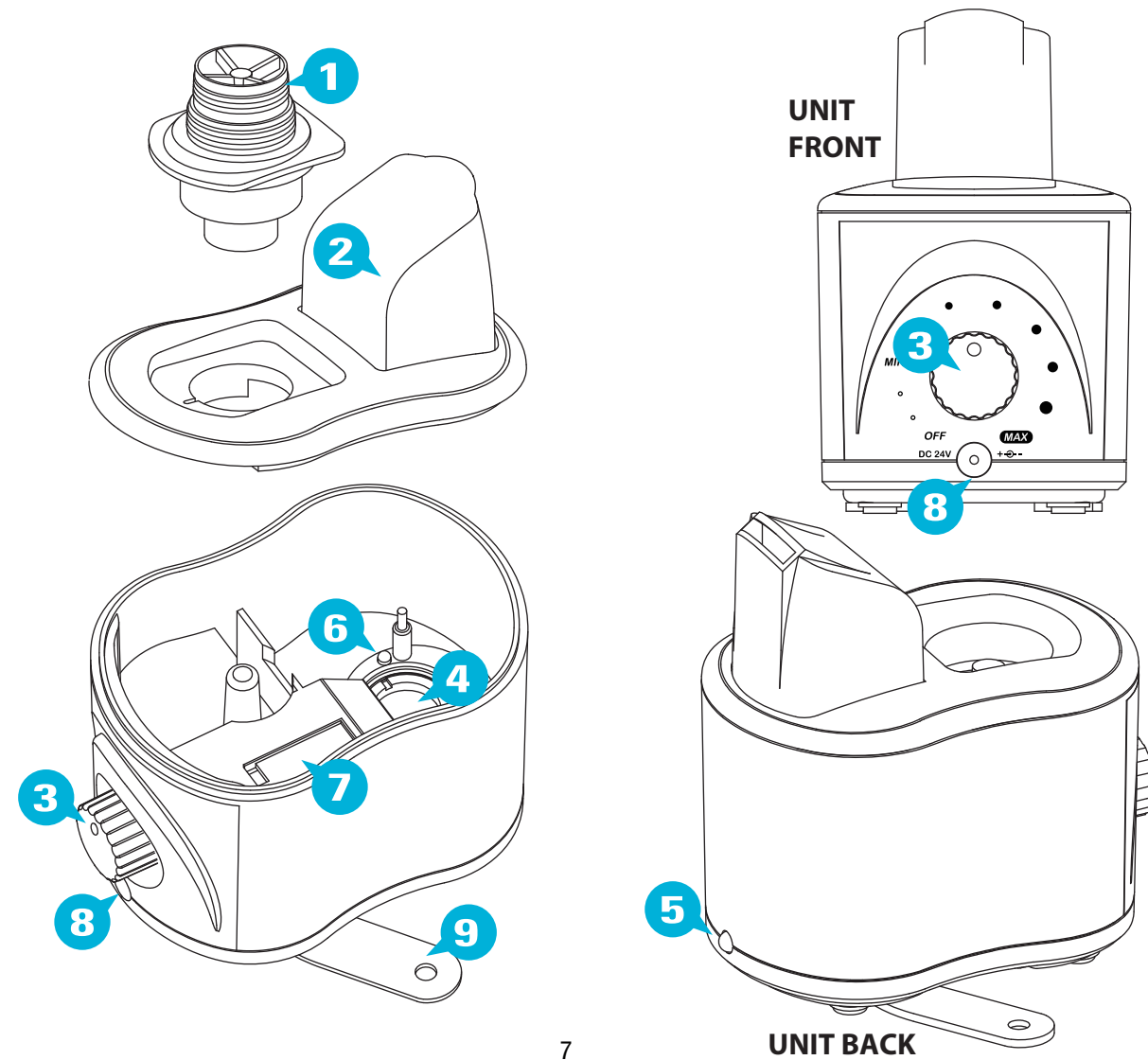
5

## IMPORTANT SAFEGUARDS



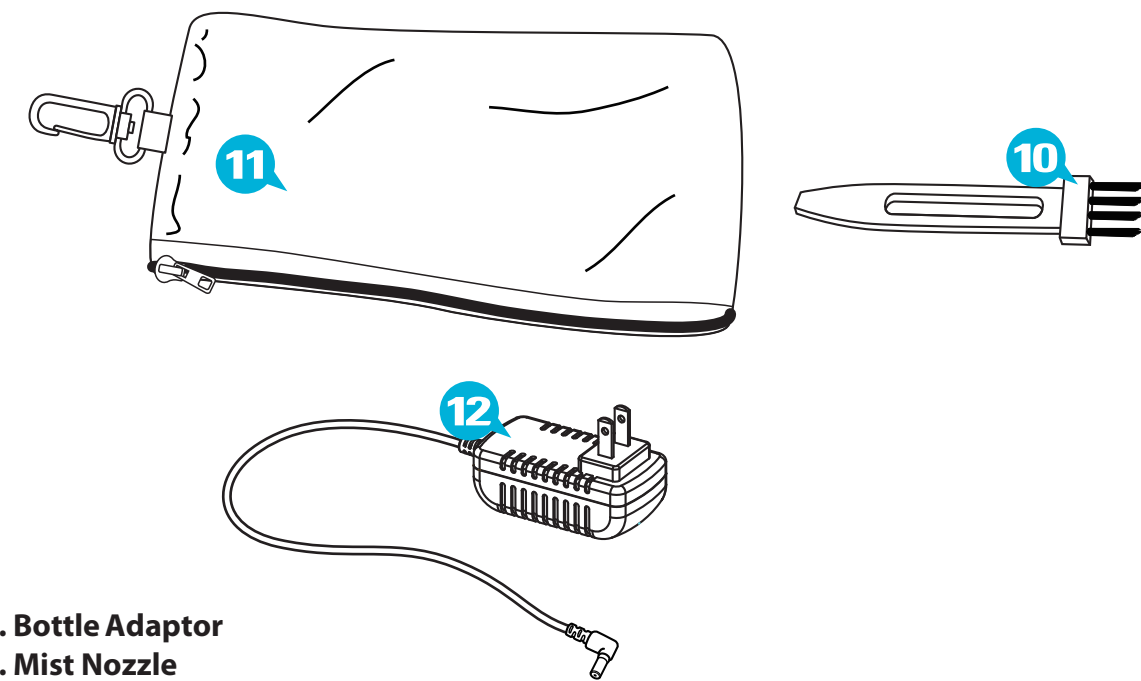
6

PARTS AND FEATURES



7

PARTS AND FEATURES



- 1. Bottle Adaptor
- 2. Mist Nozzle
- 3. ON/OFF dial (MIN/MAX)
- 4. Ultrasonic Nebulizer
- 5. Germicidal UV LED
- 6. LED Light (Blue)
- 7. Air Vent
- 8. AC Adapter Connector
- 9. Fold-out Feet
- 10. Cleaning Brush
- 11. Storage Pouch
- 12. AC/DC World Travel Adapter

8

**OPERATION** (Refer to pp. 7 & 8 for Parts Identification)

**OPERATION** (Refer to pp. 7 & 8 for Parts Identification)

**OPERATION**

**NOTE:** Before the humidifier is used, check all accessories are included:

- 120~240VAC Adaptor
- cleaning brush
- storage pouch.

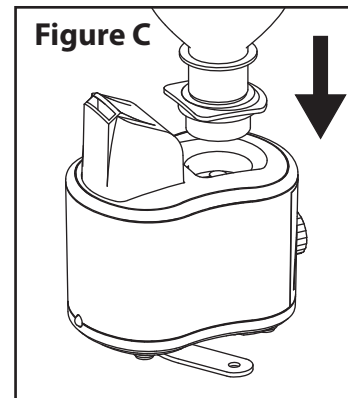
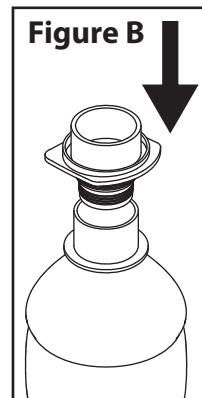
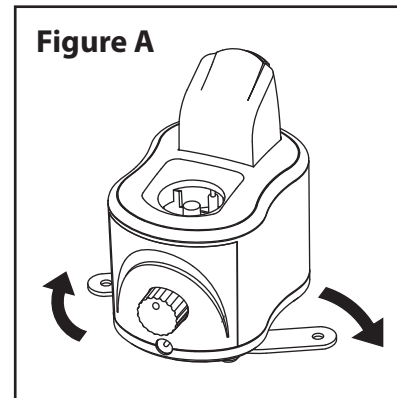
1. Fold out the feet under humidifier and make sure feet are firmly opened and fixed under the humidifier (see **Figure A**). The feet stabilize the humidifier with a bottle on the top.

2. Ensure the mist/nozzle outlet is in the open position, otherwise humidifier will not work.

4. 17oz / 0.5 liter water bottle is recommended. You may also fill the empty water bottle with tap water.

5. Insert water adaptor into the water bottle, then quickly place the other side of water adaptor into the humidifier (see **Figure B+C**). DO NOT over tighten the water adaptor. The water bottle should not be squeezed since it will cause the humidifier to overflow.

6. Plug AC adaptor directly into wall outlet.



7. Turn the Dial Switch to the lowest setting (see **Figure D**), the humidifier will begin to operate within a few seconds. A blue LED light inside the unit will illuminate when the unit is working.

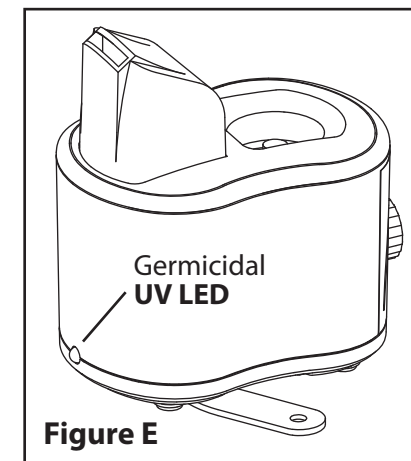
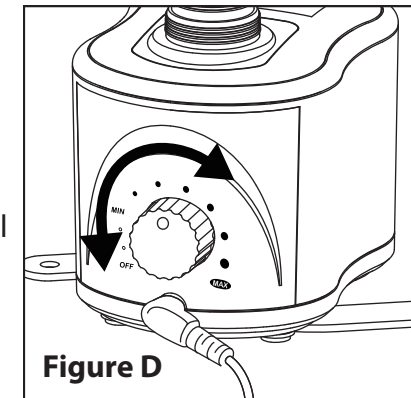
8. UV LED will illuminate within a few seconds after the unit is turned on (see **Figure E**). UV LED provides add on germicidal protection.

9. When the dial switch is turned further to the right, the mist output will be set to the maximum level. You may notice a fine mist of water around the unit when dial is set to the maximum level. To eliminate that, simply turn the dial to the left to set to a lower level.

10. When the desired humidity level is reached (50%), the dial switch can be set to a lower level by turning to the left.

11. When the water bottle is almost empty, it will slightly tip to the side. This is normal. Just remove the empty water bottle. Then unscrew the bottle adaptor and fill up the bottle with water (you may use tap water). Then place the adaptor back on and place the bottle upside down. Turn the unit back on to the desired level.

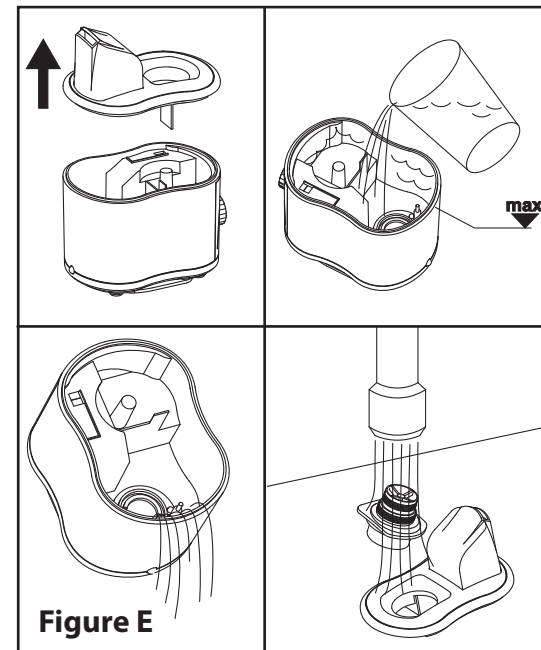
12. In case there is no water in the bottle, the humidifier will automatically shut off. Blue LED will remain illuminated when there is no water in the bottle; it will be off when the unit is turned off. Once the water is refilled, the humidifier will start working again.



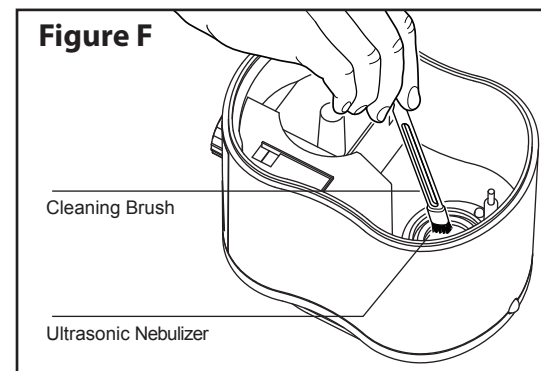
## CLEANING AND MAINTENANCE

### CLEANING AND MAINTENANCE

1. Turn off the humidifier and unplug the unit from its electrical outlet before cleaning.
2. To prevent mold, bacteria, film and scale from forming, it is recommended the upper part, the mist outlet/nozzle, water adaptor, the water bottle, and ultrasonic nebulizer be cleaned once every two weeks (see **Figure E**).
3. Clean the inner parts with a soft cloth. DO NOT use any aggressive cleaning agent or detergent to clean the humidifier.
4. Only use the included brush to clean ultrasonic nebulizer. This should be done once a week (see **Figure F**).
5. Use water only to clean.
6. Do not immerse humidifier in the water when cleaning.
7. No water should come into the contact with the air vents.
8. NONE of the parts are dishwasher safe – so it cannot be cleaned in a dishwasher.



**Figure E**



**Figure F**

Cleaning Brush

Ultrasonic Nebulizer

## SPECIFICATIONS

<b>Electrical Voltage</b>	<b>100~240 VAC</b>	<b>50-60Hz 0.5 A</b>
<b>Power Consumption</b>	<b>DC 24V 0.65A 15.6W (Max)</b>	
<b>Recommended Bottle Size</b>	<b>17 oz / 0.5 liter</b>	
<b>Dimensions (L x W x H)</b>	<b>4.36" x 2.88" x 4.53"</b>	
<b>Weight</b>	<b>0.8 lbs (including Adaptor)</b>	
<b>Operation Noise Level</b>	<b>&lt; 30 dB</b>	