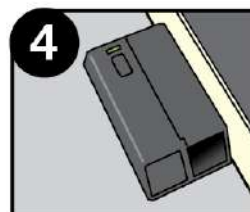
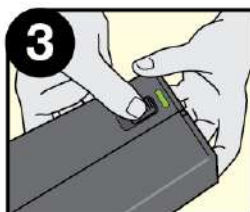
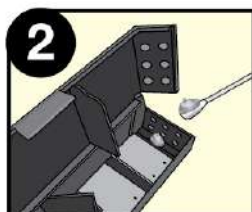
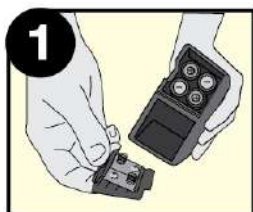




# Electronic Mouse Trap Instructions

## TRAP OPERATION INSTRUCTIONS



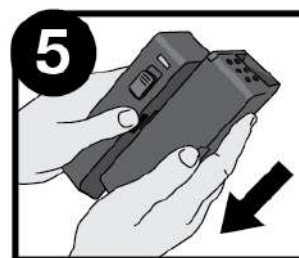
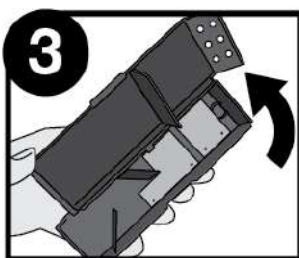
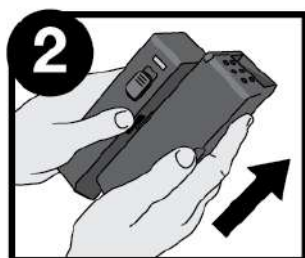
- 1.) Turn the switch to the "OFF" position and insert 4 AA batteries into the battery compartment.
- 2.) Open the kill chamber door and bait trap with peanut butter in the indicated bait cup.
- 3.) Turn the switch to the "ON" position. The green light will flash and the unit will buzz to indicate the unit has been enabled. Once a rodent is caught, a green light will flash for up to one week.
- 4.) Place the trap along a wall, making sure the side with the rodent entrance is against the wall.

A red light indicates low battery life. Replace batteries.

### TO DISPOSE OF RODENT

Turn the switch to "OFF". Open the kill chamber door and properly discard rodent.

## TRAP CLEANING INSTRUCTIONS



- 1.) Disassembly: Turn the switch to "OFF". Hold trap with battery compartment in left hand, power switch facing upwards and rodent entrance facing towards you.
- 2.) With your right hand push forward and separate the kill chamber from the electronics housing.
- 3.) The kill chamber is now ready for cleaning. Open rodent disposal door. Use soft bristle brush and warm soapy water to scrub inside of chamber if desired.
- 4.) Thoroughly dry interior and exterior of kill chamber prior to trap reassembly.
- 5.) Assembly: Hold battery compartment in left hand with power switch facing upwards and align key holes. Insert keys into opposite openings and pull right hand backwards to reconnect halves.
- 6.) Trap is ready for use.