

LAVALIER

MICROPHONE

INSTRUCTION MANUAL



RØDE[®]
MICROPHONES



www.rote.com



INTRODUCTION

Thank you for investing in the RØDE Lavalier microphone.

Whether you're presenting for television or live on-stage, in a 20,000 seat auditorium or in a house of worship, RØDE has your needs covered with the reliable and discreet Lavalier.

Featuring the pure, clear audio and low handling noise that RØDE is celebrated for, the Lavalier is built to deliver and to last.

The included water resistant pop filter and mini-furry for high wind protection ensure quality recordings in adverse environments, while the anti-trauma water resistant case provides rugged and secure protection for the microphone, cable and accessories.

Knowing that versatility is paramount in any product, we at RØDE have developed the MiCon™ connector system which provides seamless integration between the Lavalier and a wide range of wireless systems.

Please take the time to visit www.ode.com and register your microphone for warranty.



Peter Freedman AM
RØDE Microphones
Sydney, Australia

FEATURES

ERGONOMIC DESIGN

- Ultra discreet appearance
- Incorporated cable management system

HIGH QUALITY PERFORMANCE

- Ø4.5mm (Ø0.177") miniature microphone
- Corrosion resistant stainless steel
- Low handling noise

UNIVERSAL COMPATIBILITY

- RØDE MiCon™ connector system provides seamless integration with a wide range of wireless systems while maintaining discreet and unobtrusive appearance
- Gold plated connections



LAVALIER & ACCESSORIES

1. RØDE Lavalier with Shielded Kevlar® reinforced-cable
2. Anti-trauma water resistant storage case
3. Water resistant pop filter
4. Mini-furry for high wind protection
5. Lapel-style cable management clip
6. Adjustment tools
7. Sanitary cleansing wipes

Compact, interchangeable MiCon™ adaptors available to suit industry standard wireless systems*



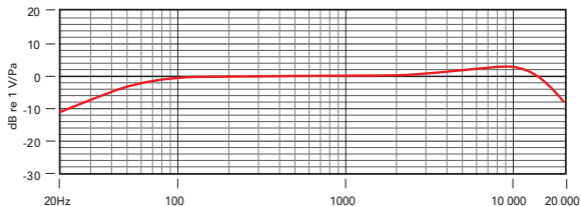
*MiCon™ adaptors sold separately -
see rode.com/lavalier for a full list of compatibility

SPECIFICATIONS

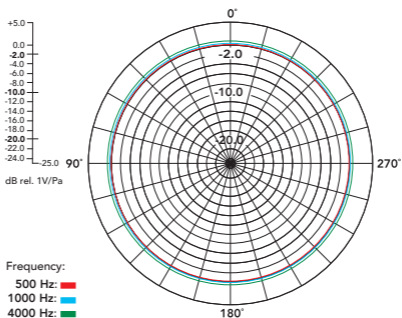
Acoustic Principle:	Permanently polarised condenser
Directional Pattern:	Omni-directional (see graph)
Frequency Range:	60 Hz ~ 18 KHz (see graph)
Output Impedence:	3k Ω Typical
Signal To Noise Ratio:	69 dB
Equivalent Noise:	25 dBA SPL (per IEC651)
Clipping SPL:	110 dB
Maximum Output:	189 mV**
Sensitivity:	-33.5 dB re 1 V/Pa (21mV @ 94 dB SPL) \pm 3 dB @ 1 kHz
Dynamic Range:	85 dB Typical**
Power Requirements:	Min 2 V ~ Max 5 V through RØDE wireless adaptors P48 through RØDE XLR adaptor
Output Connection:	RØDE MiCon™ connector

SPECIFICATIONS

FREQUENCY RANGE



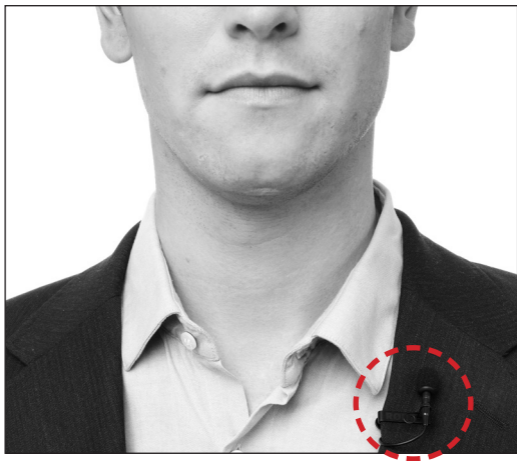
POLAR RESPONSE



** Calculated from maximum SPL peak before clipping.
All measurements are calculated when powered at 5 V or P48 (RØDE XLR adaptor)

MIC PLACEMENT

For the best performance, the Lavalier microphone should be positioned as close as possible to the sound source, without being subject to clothing rustle, gusts of air or dust. Also ensure the mic is pointed as much as is convenient towards the user's mouth.

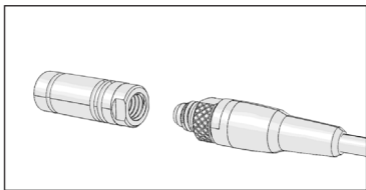


Position the microphone close to the sound source

At times it may be best to test different placements to provide the optimal combination of sound quality and discretion.

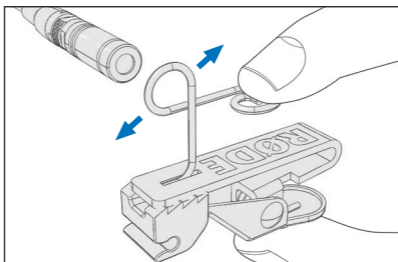
FITTING AND CABLING

To fit your Lavalier onto clothing and connect to your wireless system, first securely fasten one end of your MiCon™ cable to the Lavalier. The RØDE spanner can assist you in this assembly.



Screw the microphone to your MiCon™ Cable

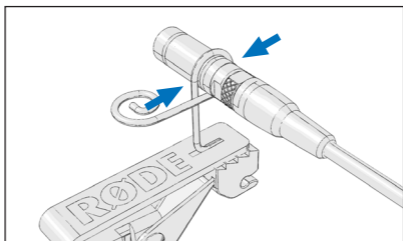
Next, mount the Lavalier into the provided lapel clip. Hold the clip between two fingers, with one finger pressing down on the end of the wire loop. This will create enough leeway to insert your Lavalier through the wire.



Press open the wire loop on the lapel clip

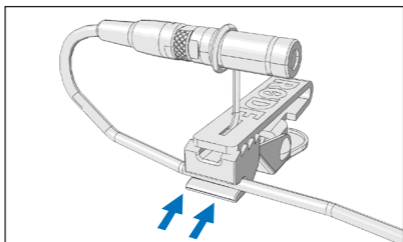
FITTING AND CABLING

Rest the mic in the loop so that the wire encircles one of the grooves on the mic's body. Once you ease off your grip on the wire, the microphone will be held securely in place.



Rest the microphone in the wire loop and release wire

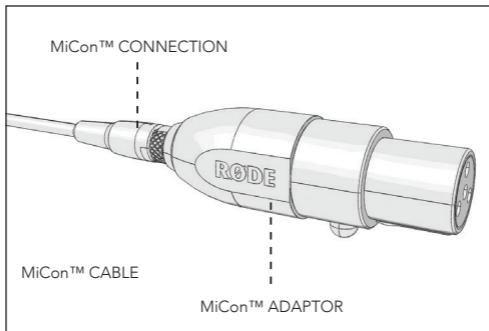
To prevent tangling, clip the cable into the groove on the lavalier clip. Then the clip is ready to be attached to an appropriate part of the user's clothing.



Clip the cable into the groove in your lavalier clip

FITTING AND CABLING

To connect your Lavalier to your wireless system, securely fasten the corresponding adaptor to the other end of your MiCon™ cable. The RØDE spanner can assist you in this assembly.



RØDE MiCon™ cable and adaptor

The Lavalier's connections have been designed using the RØDE MiCon™ connector system, which provides seamless integration with a wide range of wireless systems, while maintaining the mic's discreet appearance. (MiCon™ adaptors sold separately – see rode.com/lavalier for a full list of compatibility.)

Plug the adaptor into your wireless system and you're ready to go.

INCLUDED ACCESSORIES

WATER RESISTANT POP FILTER

The pop filter is an optional attachment to your Lavalier which reduces plosives (gusts of wind noise caused by hard sounds such as 'p' or 't').

It is also strongly recommended you use your pop filter to protect the Lavalier in any extreme environments which are overly dusty or moist, to prevent damage to the mic.

To correctly fit your pop filter, slide the filter over the Lavalier until it reaches the first groove. Pushing the filter any further down will result in decreased protection of the capsule.



Lavalier with pop filter

INCLUDED ACCESSORIES

MINI-FURRY

For increased wind protection, a mini-furry windshield is provided with the Lavalier. The windshield is ideal for situations such as outdoor performances, where wind noise may distort the audio quality of the mic.

To fit, simply slide the mini-furry straight over the Lavalier until it reaches the first groove. Ensure the fur is fluffed up in all directions for maximum effectiveness.



Lavalier with mini-furry

STORAGE & CARE

When not in use, always keep your Lavalier in the storage case provided. Close and snap the storage case for complete protection.

Inside the case, you will find a sachet of moisture absorbent crystals. Please retain these crystals and store with the Lavalier to keep the microphone in ideal condition.

Eventually this pack of crystals will need to be dried. This is indicated by the crystals turning pink in colour. They can easily be re-used by placing them in an oven at 100-150 degrees Celsius for approximately ten minutes. The crystals will operate effectively again once they have turned blue.

In some cases, such as when there are multiple users of the Lavalier, you may wish to sanitise the microphone and cable.

To do this, use the provided Sanitary Cleansing Wipes to wipe down the Lavalier surface. You may wish to detach the microphone from the lapel clip and cable for easier access.

Please be mindful when cleaning the Lavalier not to let any dust or moisture into the microphone capsule.

WARRANTY / SUPPORT

All RØDE microphones are guaranteed for one year from the date of purchase. The Lavalier warranty may be extended to a full five year period. Extending your warranty is completely free of charge – simply register your purchase details on the RØDE website at www.rote.com/warranty*

The warranty covers parts and labour that may be required to repair the microphone during the warranty period. The warranty excludes defects caused by normal wear and tear, modification, shipping damage, or failure to use the microphone as per the instruction guide.

If you experience any problem, or have any questions regarding your microphone, first contact the dealer who sold it to you. If the microphone requires a factory authorised service, return will be organised by that dealer. We have an extensive distributor/dealer network, but if you have difficulty getting the advice or assistance you require, do not hesitate to contact us directly.

Technical Support: For information and technical support questions please visit www.rote.com/support

*subject to terms & conditions -
see rote.com/warranty for full details



