

8 Outlet Surge Protector with Mechanical Timer

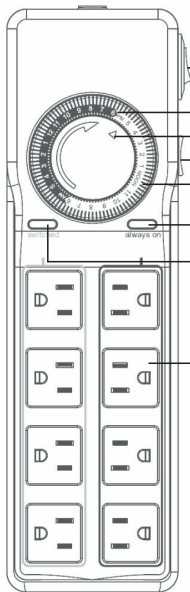


Please keep this handbook

www.bn-link.com

Designed in California, Made in China

PRODUCT VIEW



⑦ Master power switch

① Clock dial

② Arrow

③ Slide switch

④ Push pins

⑤ 4 Always ON output indicator

⑥ 4 Timed output indicator

⑧ Socket

- ① **Clock Dial:** White Part=6AM-6PM Hours; Black Part=6PM-6AM Hours.
- ② **Arrow:** Indicates the current time of day.
- ③ **Slide Switch:** Controls the 4 timed outlets.
Slide the switch up to ON position; Slide the switch down to Timer position.
- ④ **Push Pins:** Each pin represents 15 minutes.
Pins down = ON; Pins up = OFF.
- ⑤ **4 Always On output indicator**
- ⑥ **4 Timed output indicator**
- ⑦ **Master power switch**
- ⑧ **Socket:** Only intended to be used with a grounded device.

RATINGS

Rated Voltage: 125V, 60Hz

Max.Loading:1875W, 15A

Power supply cord:4FT 14/3 SJT

WARNING

- Use a grounded outlet
- Follow local electrical codes
- For indoor use only
- Keep children away
- Unplug timer before cleaning
- Fully insert plug
- Do not use in wet locations
- Do not exceed electrical ratings

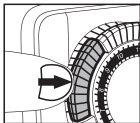
APPLICATIONS

- Lighting
- Heating systems
- Humidifiers
- Nebulizers
- Cooling systems
- Indoor sprinklers
- Aquariums
- Ventilators

OPERATING INSTRUCTIONS

Step1. Set a period of time for the unit to be “ON”

Make sure all pins are in the UP position before beginning. Locate the black pins and push them down at the marked times when the attached device is to be “ON”. Each pin represents a 15-minute time interval.



Example: “ON” time is 7:00PM, “OFF” time is 9:30PM. Push down all of the pins between 7:00PM and 9:30PM.

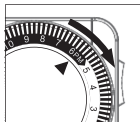
Note: Pins are located in the black ring around the dial.

Step2. Set the “CURRENT TIME”

Rotate the entire black push-pin dial clockwise until the arrow aligns with the current time of day on the dial.

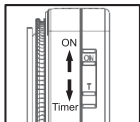
Example: If it is 6:00PM, please rotate the dial clockwise until the arrow aligns 6PM on the dial.

Note: Please pay attention to AM/PM.



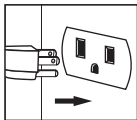
Step3. Set “BYPASS SWITCH”

When the switch is in the “T” (down) position, the unit will automatically turn your attached device ON and OFF according to the programmed time. When the switch is in the “ON” (up) position, the unit will bypass the programming and your attached device will remain ON.



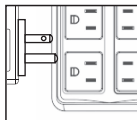
Step4. Plug the unit into an electrical outlet

The unit will rest against the outlet.



Step5. Attach one device to the unit

Plug a device into the outlet in the front of the unit. Make sure the attached device is switched ON.



HELPFUL TIPS

1. This timer repeats the settings daily.
2. To push down or pull up the black pins, use your finger or the tip of a small instrument such as a pen or pencil.
3. You can set up to 48 different “ON” and “OFF” times in a 24-hour period. Pins pressed down represent the “ON” time, pins in the up position represent the “OFF” time.
4. Switching the unit to “ON” (up) will bypass programming, however, the timer dial will continue to rotate and maintain the current time.
5. Unit will stop operating if the power goes out. Once power is resumed, reset the time of day as explained in Step 2 of the instructions.
6. The unit will cut off the power output in case of over load. Push the master switch to RESET to restore the power output. Reset time if necessary.

TROUBLESHOOTING

- **PROBLEM:**

Appliances do not turn on as programmed.

- **POSSIBLE CAUSE:**

Connected appliances are not in “ON” position; they are not functioning; timer is not receiving power, or “BYPASS SWITCH” is in the “ON” position.

- **CORRECTIVE ACTION:**

Ensure the connected appliances are functional by plugging them directly into the outlet. Be sure the connected appliances are in the “ON” position if they have their own switch. Make sure the power outlet which the timer is plugged into is active. Check that the “BYPASS SWITCH” is in the “TIMER” position.

- **PROBLEM:**

Appliances come on before the actual time.

- **POSSIBLE CAUSE:**

“CURRENT TIME” was not set properly.

- **CORRECTIVE ACTION:**

Refer to step 2 of this manual. Please note that 6AM-6PM is indicated with a white background on the dial, and 6PM-6AM is located in the black background on the dial. Point the arrow to your “CURRENT TIME”, noting the AM/PM.

BN-LINK INC.

12991 Leffingwell Avenue, Santa Fe Springs
Customer Service Assistance: 1.909.592.1881

E-mail: support@bn-link.com

[Http://www.bn-link.com](http://www.bn-link.com)

Hours: 9AM - 5PM PST, Mon - Fri

Designed in California Made in China