

NEED MORE HELP?

Why wait? Go to our support page and find all the answers you're looking for 24-hours a day. [www.jabra.com/speak510](http://www.jabra.com/speak510)

Jabra Speak 510

**Jabra**<sup>®</sup>  
YOU'RE ON

GET STARTED UNDER

**5**  
MINUTES

For more information, please visit  
[www.jabra.com](http://www.jabra.com)

81-03637 B

[jabra.com/speak510](http://jabra.com/speak510)

A BRAND BY

**GN Netcom**

---

© 2012 GN Netcom A/S. All rights reserved. Jabra® is a registered trademark of GN Netcom A/S. All other trademarks included herein are the property of their respective owners. The Bluetooth® word mark and logos are owned by the Bluetooth SIG, Inc. and any use of such marks by GN Netcom A/S is under license. (Design and specifications subject to change without notice).

---

Made in China  
MODEL: PHS002W



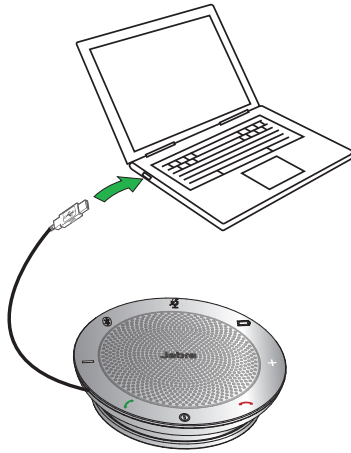
---

[www.jabra.com](http://www.jabra.com)

# 1 CONNECT TO PC

1. Plug the Jabra Speak 510 USB cable into any available USB port on your PC. The Jabra Speak 510 will turn on automatically when connected to the PC.

2. Select the Jabra Speak 510 as the audio device in your softphone.



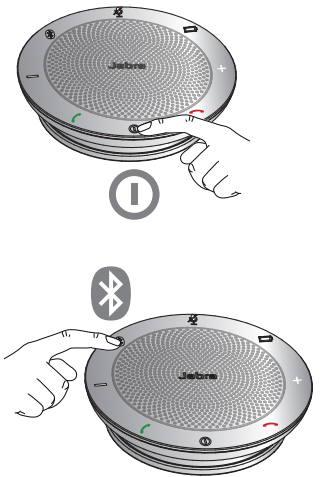
# 2 CONNECT TO MOBILE PHONE

ENGLISH

1. Press and hold (2 secs) the **On/off** button until the lights flash, to turn on the Jabra Speak 510.

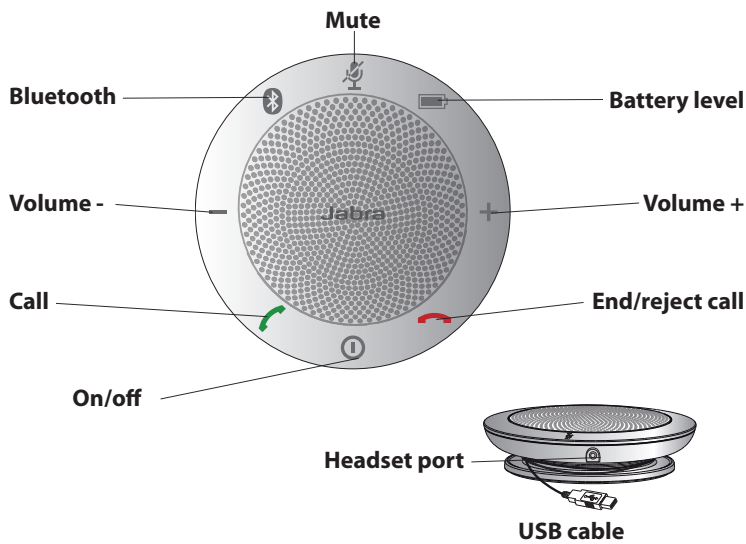
2. Press and hold (2 secs) the **Bluetooth** button on the Jabra Speak 510 until the Bluetooth light flashes blue and you hear the connection instructions. Then release the button.

3. Enable Bluetooth on your mobile phone, and select the Jabra Speak 510 from the list of available Bluetooth devices. If prompted for a password enter 0000.










**Note:** You can connect and use both a PC and mobile phone simultaneously.

### 3 USING THE JABRA SPEAK 510



#### IMPORTANT

For full Jabra Speak 510 call functionality with your PC, download and install Jabra PC Suite from [www.jabra.com/pcsuite](http://www.jabra.com/pcsuite)

	On/off	Press and hold (2 sec) the <b>On/off</b> button until the lights flash
	Make call	Call will automatically transfer to the Jabra Speak 510. If not, tap the <b>Call</b> button
	Answer call	Tap the <b>Call</b> button
	End call	Tap the <b>End/reject call</b> button
	Reject call	Tap the <b>End/reject call</b> button
	Speaker volume up/down	Tap the <b>Volume +</b> or <b>Volume -</b> button
	Battery level	Tap the <b>Battery level</b> button to display the current battery level
	Connect with new Bluetooth device	Press and hold (2 secs) the <b>Bluetooth</b> button to connect with a new Bluetooth device
	Reconnect/disconnect with Bluetooth device	Tap the <b>Bluetooth</b> button to reconnect/disconnect with a Bluetooth device
	Mute/un-mute microphone	Tap the <b>Mute</b> button