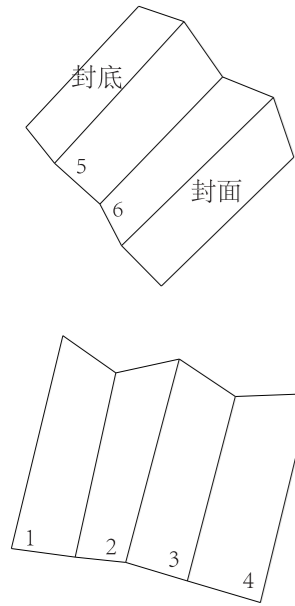
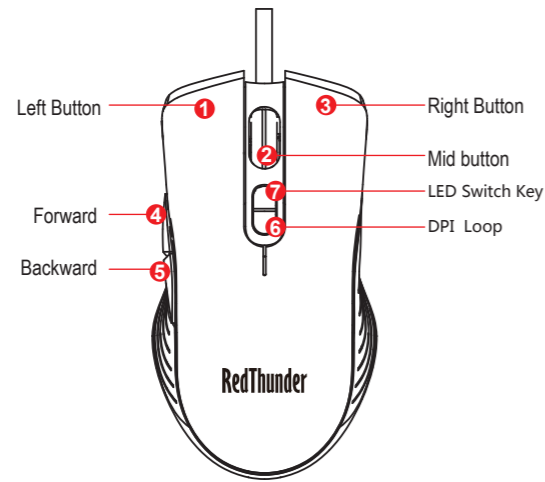


说明书印刷说明：
 1.虚线为折痕，勿印刷
 2.四色印刷 128g铜板纸
 3.折叠方式见下图：



Office mode function indicator

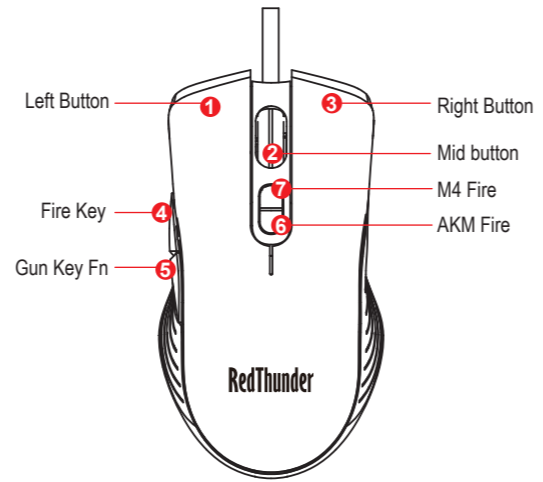


Product specifications

Light mode: RGB horse light effect	Mouse size : 128*71*45mm
Key life: 8 million times or more	Mouse wire: 1.5m braided wire
Master chip: IC198	Voltage / current: 5V ~ 100mA
Number of buttons :7 keys	DPI switch: 6 files (800-6400)DPI
Mouse net weight: 132g	Support System : Win7/8/10/IOS/XP/Vista

01

Game mode function indicator

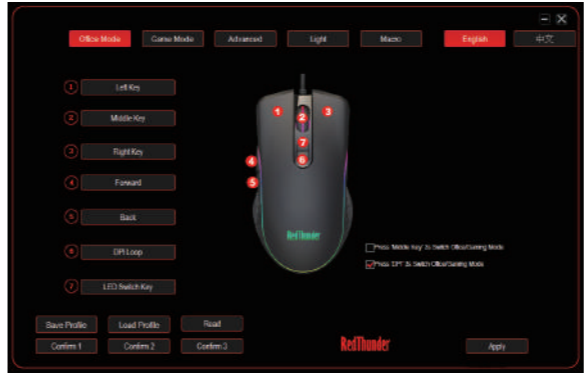


DPI switching and sensor identification:

Sensor resolution	SIX-speed DPI					
	First gear	Second gear	Third gear	Fourth gear	Five gear	Six gear
	800	1000	1600	3200	4800	6400
	Green light	Purple light	Blue light	Red light	Cyan light	Yellow light

02

Office mode setting



[Office Mode] page, the user can make any settings for 7 buttons: standard mouse button, special function button, Multimedia buttons, Internet buttons, computer function buttons, custom keyboard keys, normal macro selection.
 1. On the left side of the 1-7 button, you can choose to set the corresponding function, set the click application - you can use.
 2. The user can set the 7 button functions of the mouse to save in multiple configurations, which is convenient and quick to switch.

Save Profile : The mouse 6 button functions can be set to save in multiple configurations.

Load Profile : Import the configuration saved by the computer. **Read** : Restore the configuration of the last switch

Confirm 1 : Revert to the original default features.

03

game mode setting



[Game Mode] page, the user can make any settings for 7 buttons: standard mouse button, special function button, Multimedia buttons, Internet buttons, computer function buttons, custom keyboard keys, normal macros, gun keys settings.
 1. On the left side of the 1-7 button, you can choose to set the corresponding function, set the click application - you can use.
 2. <gun key setting>: Click to pop up the gun setting interface

1. can be right: AKM/M16/M4/UMP9/ SCAR-L/56, 762 bullets, lens guns, etc. Switch function and gun value settings.
2. Select the gun, the name of the gun, Modify the rate of fire, the value of the gun, and the way of the gun
3. After setting, click OK to use.



04

Advanced settings



1. DPI setting: The default is 6 gears 800-1000-1600 (default) -3200-4800-6400, users can customize the level 1 - level 4 value, minimum 500, maximum 64000, 11 files can be adjusted to 500-800 -1000-1200-1600-2000-2400-3200-4000-4800-6400DPI, set to save the point to take effect.

Moving Speed Enhance pointer precision

2. Pointer setting: After setting, click the "Apply" button to take effect.

Double Click Speed

3. Double-click the setting: double-click the speed of the click frequency. Once the setup is complete, click the "Apply" button to take effect.

Rolling Speed Scroll one screen at a time

4. Wheel setting: The default is 3, That is, the length of a wheel. Once the setup is complete, click the "Apply" button to take effect.

05

Lighting control

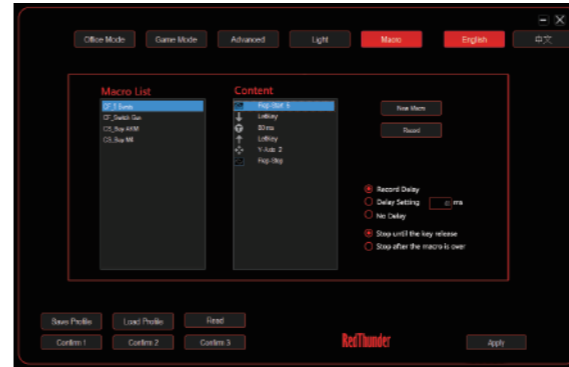


1. Decorative lamp working status: Open Close
2. Light mode switching (1 left key L+6DPI): open close
3. Light working mode: DPI breathing Colorful streamer Neon Floating light Waltz Four Seasons illusion Turn off the lights
4. Custom color: Users can customize the light mode they need, first select one of the light modes.

Once the setup is complete, click the "Apply" button to activate the light settings.

06

Macro definition setting



Provide keyboard recording function, users can record their own keyboard and mouse according to their preferences, which is called
 The "Macro Settings" usage is as follows:
 1. Click the "New Macro" button and enter the macro name. At this time, the macro list will display the newly created macro.
 2. Click the "Start Recording" button, then place the cursor on the macro content box to enter the keyboard or mouse button.
 Function, after entering the record, click the "Stop Recording" button and the application will take effect.

3. the macro modification method:
- 1 Select the macro name in the macro list and click the right mouse button to set: New macro, rename, delete macro, import single Macros, import entire macros, export individual macros, and export entire macros.
 - 2 Select the macro content in the macro content and click the right mouse button to set: modify, delete, insert.

07

RedThunder



A867

RGB GAMING MOUSE