



BND-60/U56B

24 HOUR MECHANICAL DUAL OUTLET TIMER



Intertek
3173845

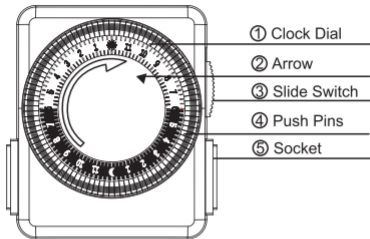


Please keep this handbook

www.bn-link.com

Designed in California, Made in China

PRODUCTS VIEW



- ① **Clock Dial:** Grey Part=6PM-6AM Hours; White Part=6AM-6PM Hours.
- ② **Arrow:** Indicates the current time of day.
- ③ **Slide Switch:** Slide the switch to “ON” for constant ON.
Slide the switch to “clock icon” for timing.
- ④ **Push Pins:** Each pin represents 15 minutes.
Pins down = ON; Pins up = OFF.
- ⑤ **Socket:** Only intended to be used with a grounded device.

RATINGS

125VAC,60Hz,15A resistive or general purpose,
Max 1875W,8A tungsten,
1/2HP,TV-5

WARNING

- Electrical shock hazard
- Use a grounded outlet
- Follow local electrical codes
- For indoor use only
- Keep children away
- Unplug timer before cleaning
- Fully insert plug
- Do not use in wet locations
- Do not exceed electrical ratings

APPLICATIONS

- Lighting
- Heating systems
- Humidifiers
- Nebulizers
- Cooling systems
- Indoor sprinklers
- Aquariums
- Ventilators

OPERATING INSTRUCTIONS

Step 1. Set a period of time for the unit to be “ON”

Make sure all pins are in the UP position before beginning. Locate the pins and push them down at the marked times when the attached device is to be “ON”. Each pin represents a 15-minute time interval.

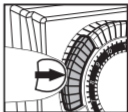


Fig 1

Example: “ON” time is 7:00PM, “OFF” time is 9:30PM. Push down all of the pins between 7:00PM and 9:30PM.

Note: Pins are the slices around the dial.

Step 2. Set the “CURRENT TIME”

Rotate the entire push-pin dial clockwise until the arrow aligns with the current time of day on the dial.

Example: It is 6:00AM, please rotate the dial clockwise until the arrow aligns with 6AM on the dial.

Note: Please pay attention to AM/PM.

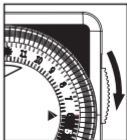
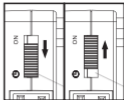


Fig 2

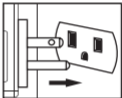
Step 3. Set “BYPASS SWITCH”

When the switch is slid to “☉” icon, the unit will automatically turn your attached device ON and OFF according to the programmed time. When the switch is slid to “ON”, the unit will bypass the programming and your attached device will remain ON.



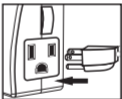
Step 4. Plug the unit into an electrical outlet

The unit will rest against the outlet.



Step 5. Attach one device to the unit

Plug a device into the outlet on the side of the unit. Make sure the attached device is switched ON. The timer can control two devices.



HELPFUL TIPS

1. This timer repeats the same settings daily.
2. To push down or pull up the pins, use your finger or the tip of a small instrument such as a pen or a pencil.

3. You can set up to 48 different “ON” and “OFF” times in a 24-hour period. Pins pressed down represent the “ON” time, pins in the up position represent the “OFF” time.
4. When the switch is in “ON” position, the timer will bypass the programs, however, the timer dial will continue to rotate and maintain the current time.
5. Unit will stop operating if the power goes out. Once power is resumed, reset the time of day as explained in Step 2 of the instructions.

TROUBLESHOOTING

- **PROBLEM:**

Appliances do not turn on as programmed.

- **POSSIBLE CAUSE:**

Connected appliances are not in “ON” position; they are not functioning; timer is not receiving power, or “BYPASS SWITCH” is in “ON” position.

- **CORRECTIVE ACTION:**

Ensure the connected appliances are functional by plugging them directly into the outlet. Be sure the connected appliances are in the “ON” position if they have their own switch. Make sure the power outlet which the timer is plugged into is active.

Check that the “BYPASS SWITCH” is in the position of the “⊖” icon.

- **PROBLEM:**

Appliances come on before or after programmed times.

- **POSSIBLE CAUSE:**

“CURRENT TIME” was not properly set.

- **CORRECTIVE ACTION:**

Check that the current time is correctly set. Note that the grey section includes hours from 6 pm to 6 am and the white section includes hours from 6 am to 6 pm.

CENTURY PRODUCTS INC.

Customer Service Assistance: 1.909.592.1881

Email: support@bn-link.com

Web: www.bn-link.com

Hours: 9AM - 5PM PST, Mon - Fri

Designed in California, Made in China